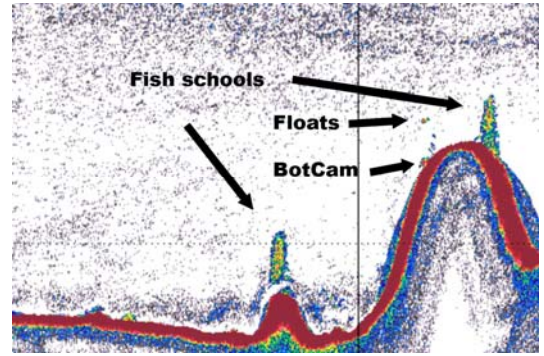


SE-11-02 March 3, 2011 progress report

The *Oscar Elton Sette* conducted nighttime acoustic surveys last night (3/2) and all day today (3/3), terminating the day

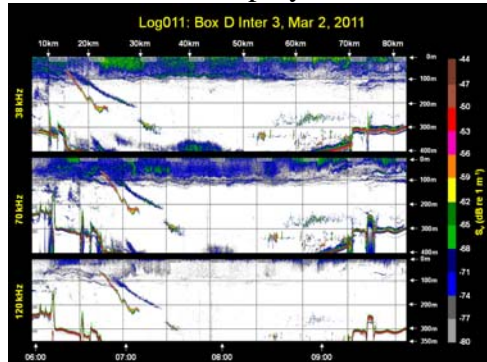
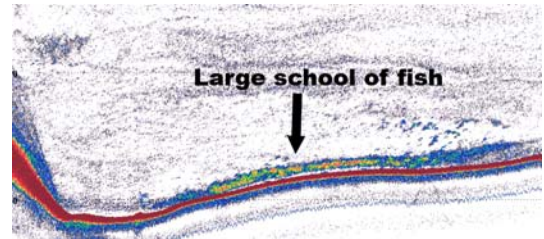


with targeted bottomfishing on strong acoustic signals, and preparing for a BotCam deployment tomorrow. The Hukipono completed 13 BotCam drops over the day. Charter fishing operations resumed with ~20 daytime stations completed by the F/Vs *Okalani*, *Naomi K*, and the recently arrived *Imua* from Oahu. Some nighttime stations are also scheduled for tonight by the same vessels. Fishing activity is scheduled to resume tomorrow depending upon the weather

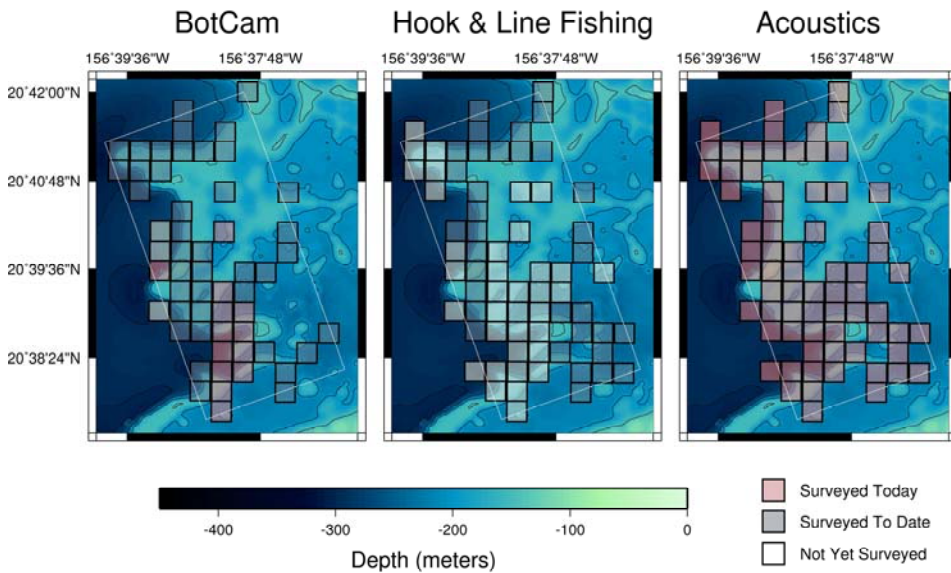


(forecast to increase in intensity through Friday). Acoustic surveys were conducted over the Sette BotCam unit, which was deployed on March 1 at 10:46AM (20° 39.148'N, 156° 38.416'W) over a bottom depth of 164 m with the floats at 150m. A large fish school was observed in

83m to the west of the BotCam unit (above R), with the same school size and shape maintained over the course of 5 hours and 10 minutes of survey.



Another transient school was observed further to the east. Neither school of unidentified fish approached the BotCam over the course of the 6-hour deployment. Acoustic surveys have documented the vertical migration patterns of micronekton (seen above as diagonal streaks). Other acoustic surveys today indicated a large number of near-benthic fish in



a large school measuring ~920m long and ~7m deep off the Northwest corner of the survey grid (above). The Sette was actively fishing at this time and caught a small green-eyed shark. Updates of survey effort are seen at left (fishing will be updated tomorrow, with subsequent progress reports prepared in the mornings).

Today the Huki Pono has surveyed 13 botcam grid locations. The Sette surveyed all grid locations 1.5 times, totaling roughly 150 km of acoustics track today. Grids surveyed today: 2.9%
Grids surveyed to date: 20.1%
Grids remaining: 79.9%