

# **PIR Data Needs for Stock Assessments**

**Gerard DiNardo**

*NOAA Fisheries*



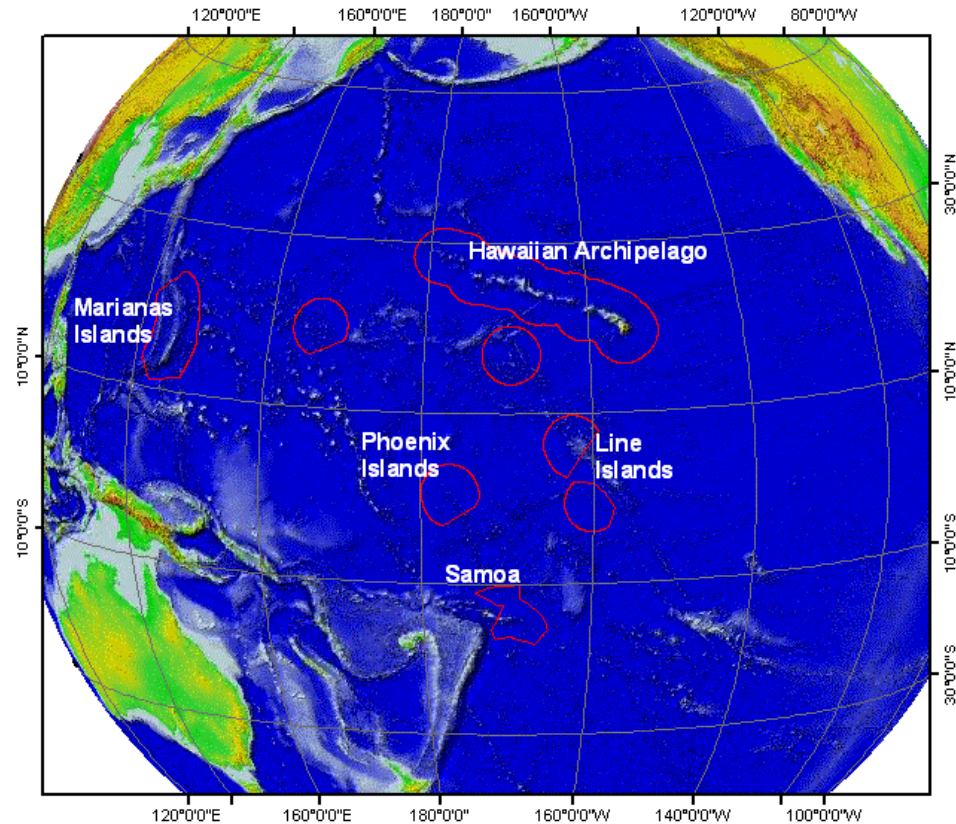


# Presentation Topics

- **The Landscape**
- **PIFSC Stock Assessment Program**
- **Stock Assessments – Process and Complexity**
- **Data Collection Programs**
- **Bottlenecks**



# The Landscape: Geographic Area of Responsibility



## Characteristics

- Vast Area
- Multiple Jurisdictions
- Tropical, Sub-tropical and Temperate Ecosystems
- Pelagic and Insular Fisheries



# PIFSC Stock Assessment Program Goals

- Provide scientific advice to resource managers on the current status and future trends in abundance and productivity of exploited marine resources in the Central and Western Pacific Ocean.
- Provide the technical basis for setting annual catch limits and other fishery management measures that achieve optimum yield from the fishery while avoiding overfishing and ecosystem harm.
- Provide scientific and quantitative support to RFMOs and RFOs
- Overarching Mandate -- Magnuson-Stevens Act (MSFCMA)



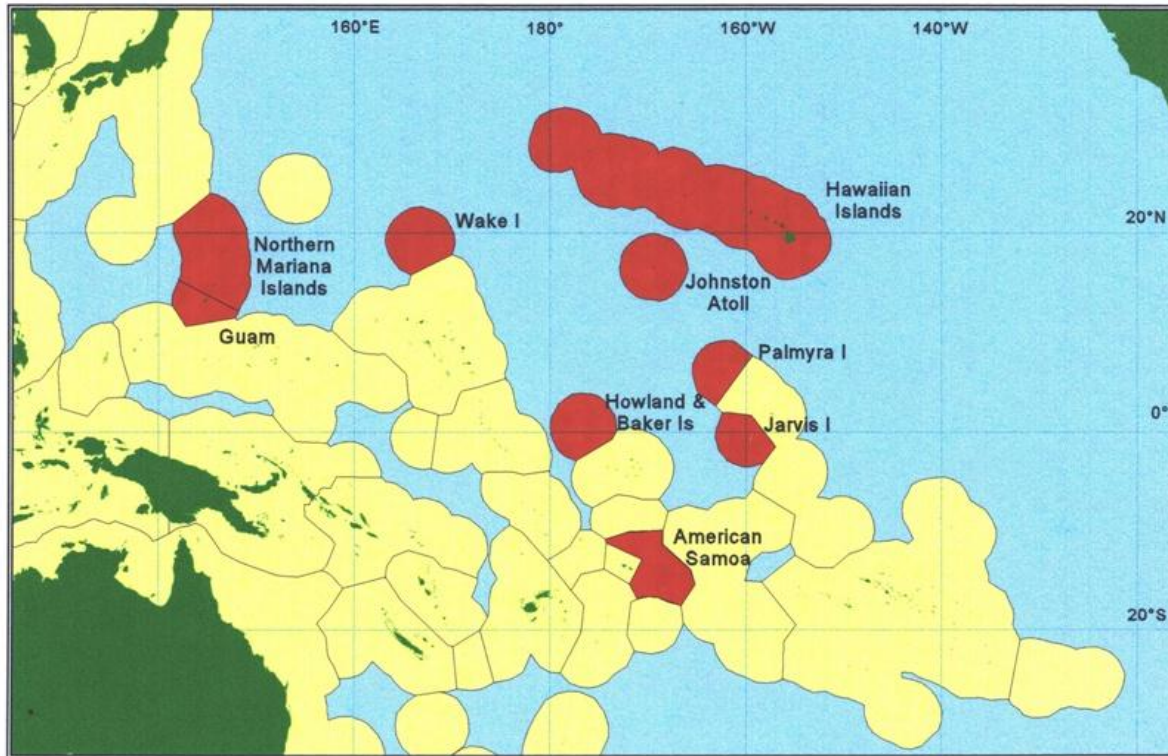
# **PIFSC Stock Assessment Program Responsibilities**

**To Support Goals, the PIFSC Stock Assessment Program:**

- Conducts Resource Evaluations and Assessments**
- Develops Improved Quantitative Techniques (Model Development)**
- Develops Science and Decision Support Tools (control rules) to Support Implementation of Ecosystem Approaches to Fisheries Management in PIR**
- Quantifies Fishery Interactions (Bycatch Estimation)**
- Provides Scientific and Quantitative Expertise to PIFSC, PIRO, WPRFMC, State of HI, WCPFC, ISC, IATTC, and other emerging RFMOs (NPFC)**



# Scientific and Management Mosaic Insular Fisheries



Exclusive economic zones (EEZs) of the Pacific Islands.  
Western Pacific Regional Fishery Management Council EEZ area shown in red.

## Constituents/Partners

- WPRFMC
- State of HI
- Territories
- Other US Gov't Agencies (NOS)

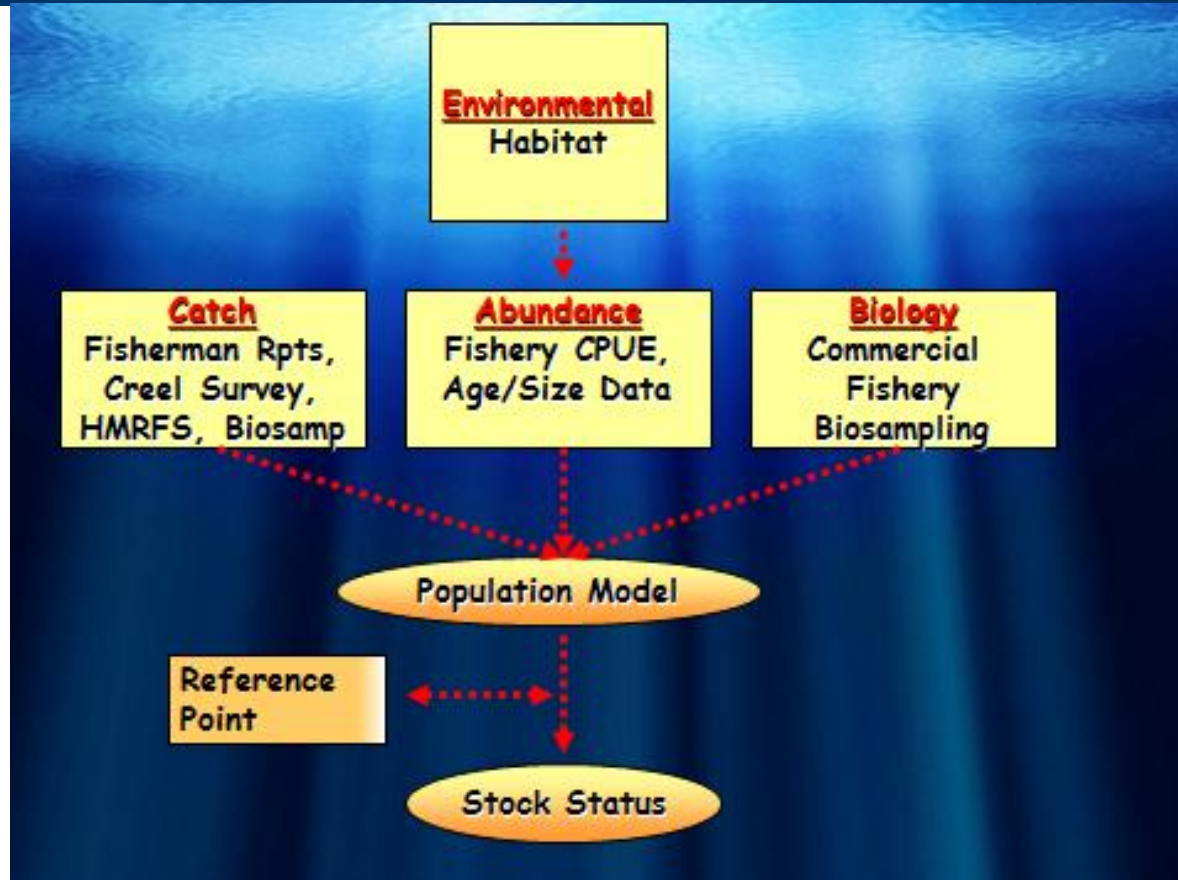


# Species of Interest – Insular Fisheries

- **Bottomfish (Data Poor Stocks)**
  - Snappers, groupers, jacks (BMUS = 14)
    - Deep 7 focus
  - Seamount groundfish (GMUS = 3)
- **Coral Reef Fish (Data Poorer Stocks)**
  - > 200 species
- **Crustaceans (Data Poor Stocks)**
  - spiny and slipper lobster; crabs; shrimp (CMUS = 10)
- **Precious Corals (Data Poor)**



# Stock Assessment Process Insular Fisheries





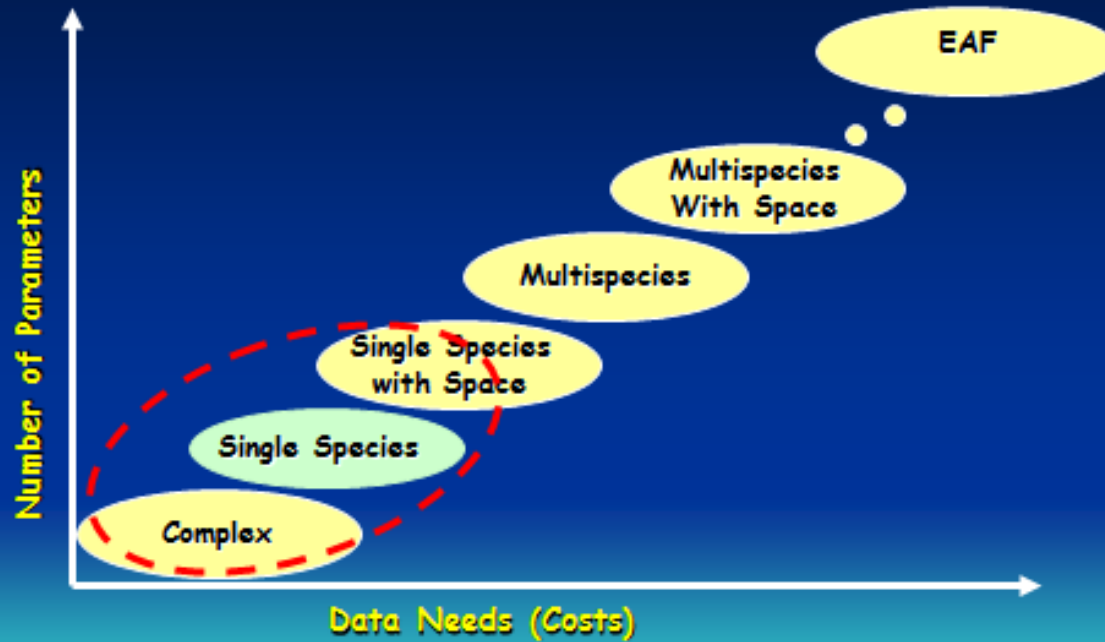


# Stock Assessment Data Sources – Insular Fisheries

Data Source	Catch	Effort	Size (len/wt)	Life Hist. Parm.	Abund / Density	\$\$
Comm. Fisherman Rpts. (HI)	X	X			X	
Creel Survey (Territories – WPacFIN)	X	X			X	
HMRFS (HI - Recreational)	X	X				
Comm. Fishery Biosampling	X		X	X		
Dealer			X			X



# Model Complexity Insular Bottomfish Fisheries

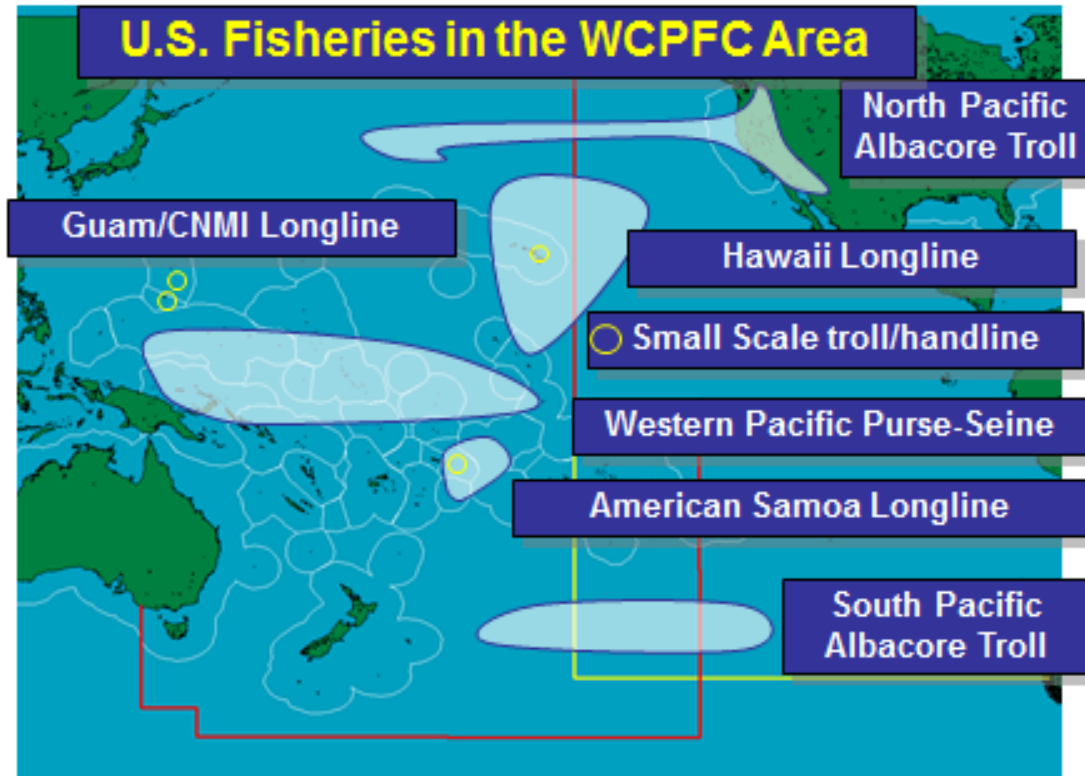


## NMFS Assessment Tiers

- 0 = none
- 1 = index only (commercial or research CPUE)
- 2 = simple life history equilibrium models
- 3 = aggregated production models**
- 4 = size/age/stage-structured models
- 5 = add ecosystem (multispecies, environment), Spatial & seasonal analyses



# Scientific and Management Mosaic Pelagic Fisheries



## Species of Interest

- Tunas
- Billfish
- Sharks
- Other pelagics

(PMUS = 30)



# Scientific and Management Mosaic Pelagic Fisheries

## Constituents/Partners

### RFMOs

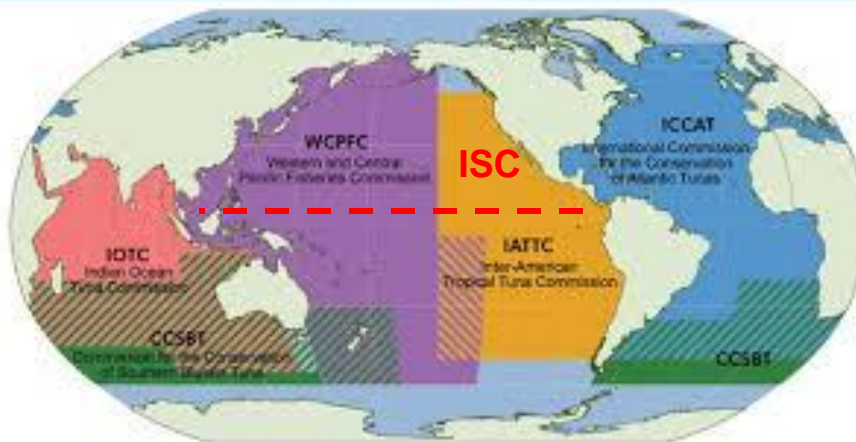
- **WCPFC**
- **IATTC**
- **NPFC**

### RFOs

- **ISC**
- **PICES**

### **WPRFMC**

GLOBAL MANAGEMENT OVERVIEW





# Pelagic Fisheries Assessment Framework

## U.S. Participates in the Assessment Process

- Data Exchanges
- Assessments (area specific) – collaborative
  - Management area specific
    - WCPO – WCPFC (tunas, billfish, sharks)
    - EPO – IATTC (tunas, billfish, sharks)
  - Stock specific
    - “North” Pacific – ISC (tunas, billfish, sharks)



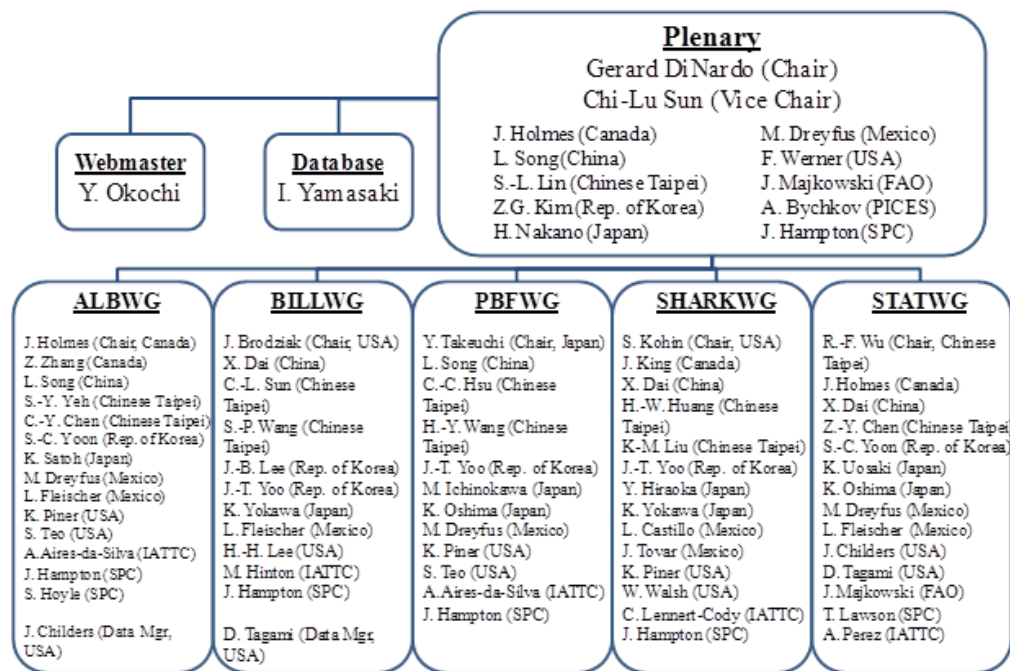
# **RFMO Assessment Process (WCPFC and IATTC)**

- **Commission Identify List of Species**
- **Science Providers Conduct Assessments**
  - WCPFC – SPC
  - IATTC – Staff
- **Assessment Reviews**
  - WCPFC – SC Meeting (August)
  - IATTC – SAC Meeting (May)



# RFO Assessment Process - ISC

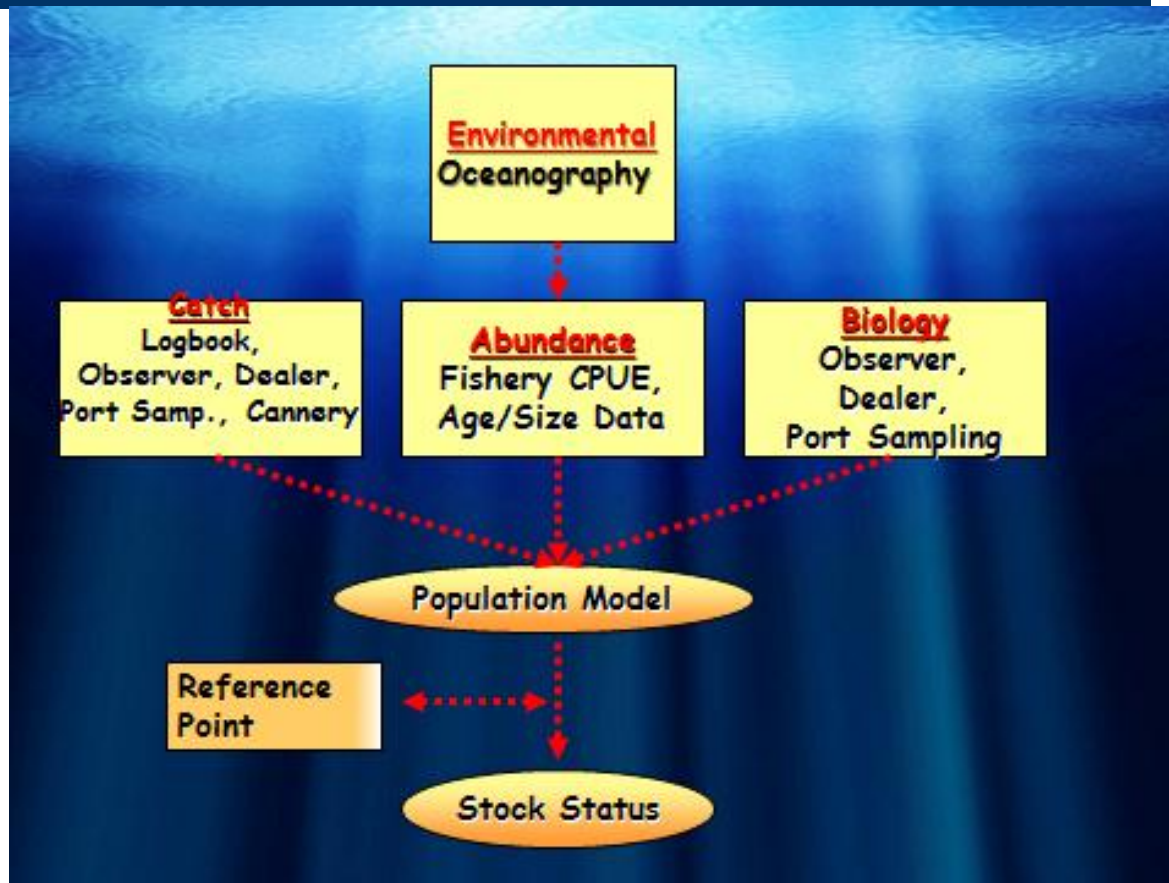
ISC Organizational Chart (July 2012)



- **ISC Species Working Groups (WG) Develop Assessment Schedule**
- **ISC Plenary Reviews / Modifies Assessment Schedule**
- **WCPFC-SC informed of ISC Assessment Schedule**
- **WCPFC-NC Reviews / Modifies ISC Assessment Schedule**
- **ISC WGs Conduct Data Prep and Assessments Workshops**
- **Assessment Reviewed by ISC Plenary, Assessment Report to WCPFC-SC, External Review of Assessment**



# Stock Assessment Process Pelagic Fisheries







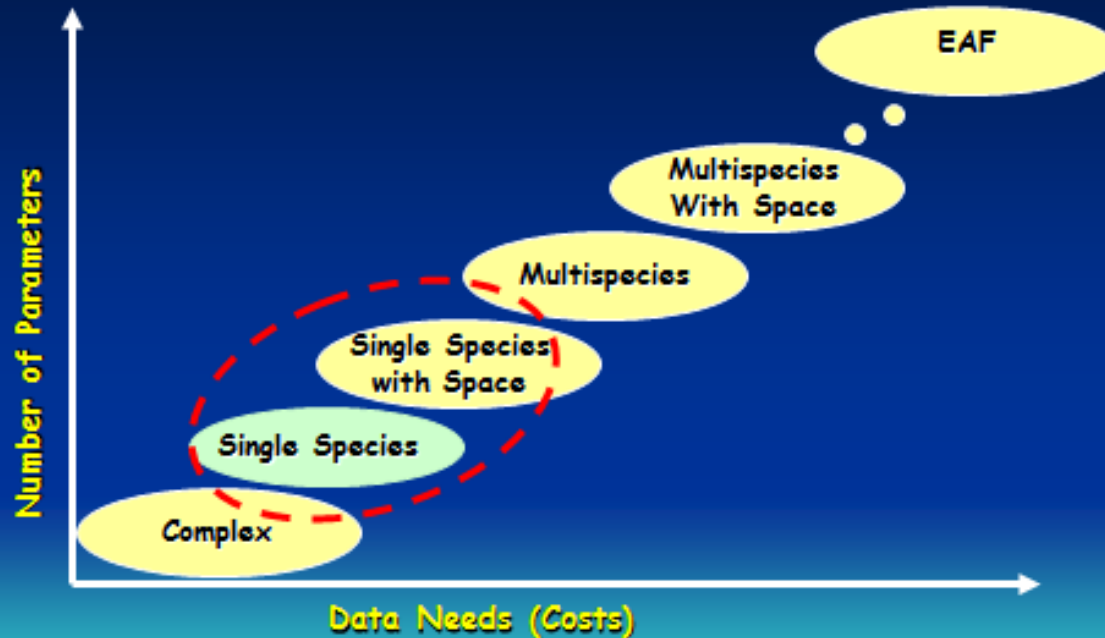
# Stock Assessment Data Sources U.S. Pelagic Fisheries

Data Source	Catch	Effort	Size (len/wt)	Life Hist. Parm.	Abund / Density	\$\$
Logbook	X	X			X	
Observer			X	X		
Dealer	X		X			X
Port Sampling (Purse Seine - Am. Samoa)	X		X			
Cannery (Purse Seine – Am. Samoa)	X					X

- “Similar” data from international partners



# Model Complexity Pelagic Fisheries



## NMFS Assessment Tiers

- 0 = none
- 1 = index only (commercial or research CPUE)
- 2 = simple life history equilibrium models
- 3 = **aggregated production models**
- 4 = **size/age/stage-structured models**
- 5 = add ecosystem (multispecies, environment), Spatial & seasonal analyses



# Bottlenecks

- Life History Data
  - Relevance and Representativeness
  - Standardization – Data Accessibility
  - Biosampling – Limited in Scope
- Catch
  - Underreporting - All Segments
  - Varying taxonomic detail (complex vs species)
- Environmental Data (Habitat and Oceanography)
  - Limited data and simple models
- Abundance
  - Biased (based on fishery data)
  - Pilot F-I Resource Survey – need to operationalize (*show me the \$\$*)