



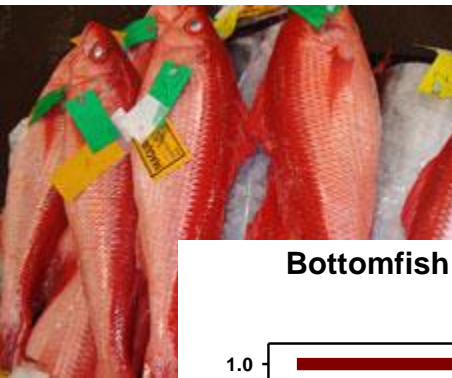
Context for Data Poor Stocks

Christopher Boggs - Chief, Fisheries Research and
Monitoring Division

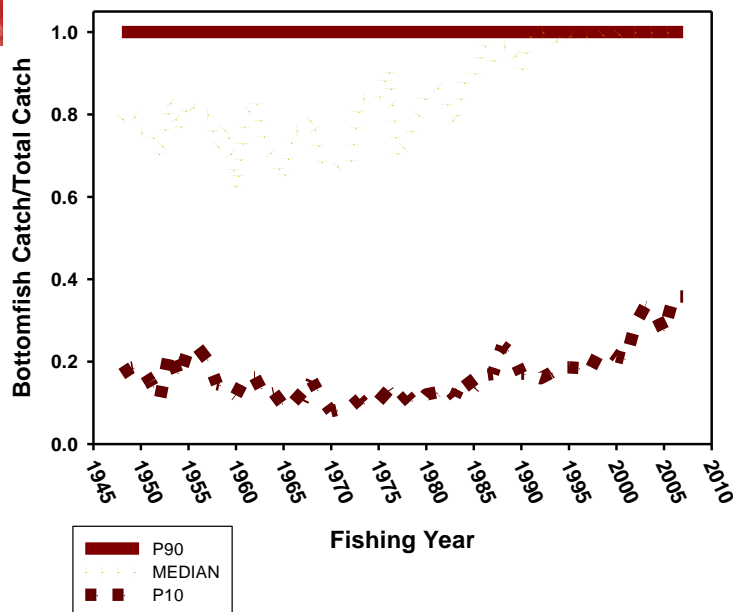
External Review of Fisheries Stock Assessments

May 19-22, 2014

Version May 8, 2014



Bottomfish Catch Ratio by Fishing Year

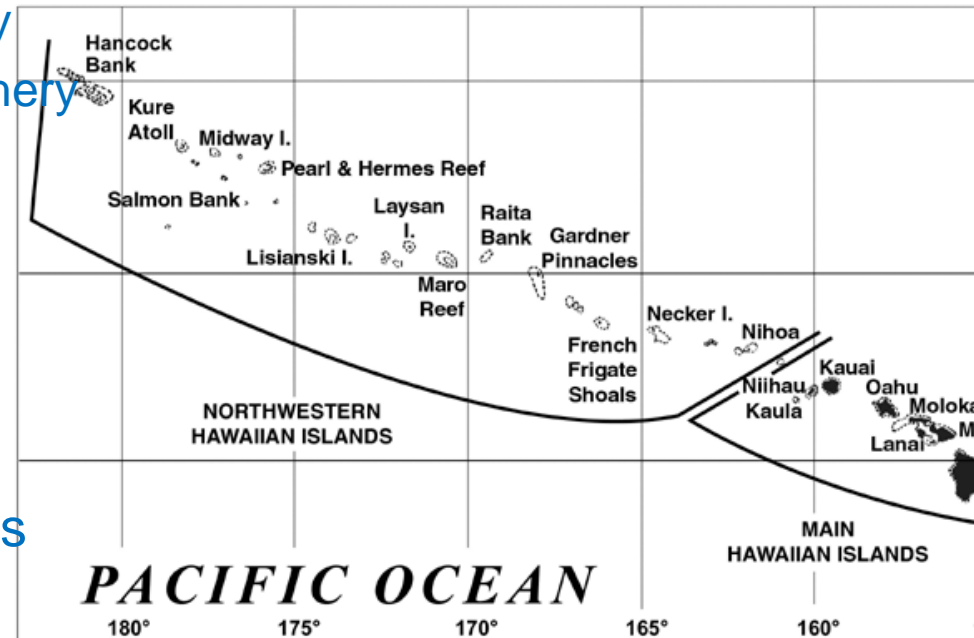




- No continental shelf and very little habitat in Federal waters
- There is no habitat that can be trawled – No trawlers
- Insular fisheries dwarfed by HMS fisheries
- 1970's: Magnusson Fishery Management Act
- 1980's-1990's: WPRFMC manages fishing in Federal waters (e.g. in the Northwestern Hawaiian Islands)

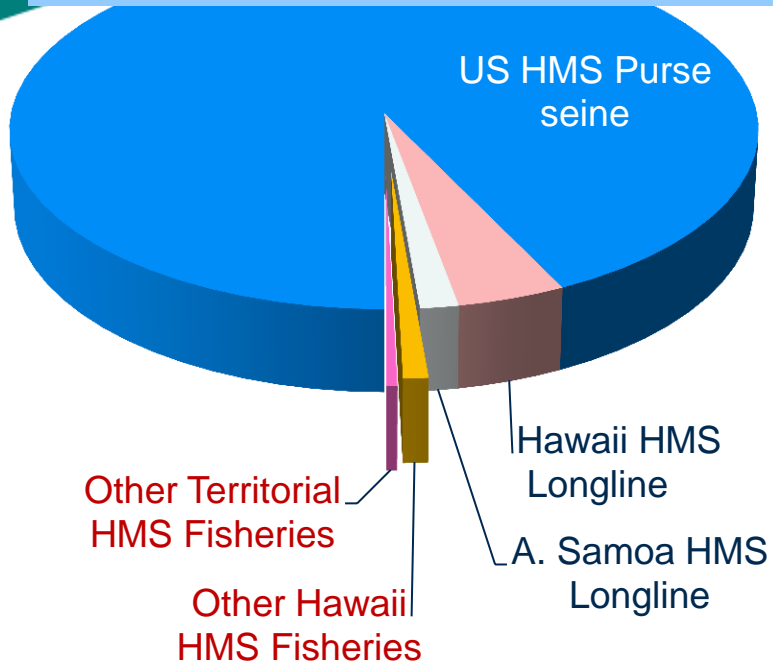
- Lobster Fishery
- Bottomfish Fishery

- State and territorial fishery data is main basis for most monitoring
- NMFS facilitates via WPacFIN
- Few insular assessments
- 2000's: Insular habitats in Federal waters become National Monuments
- New responsibilities replace the old



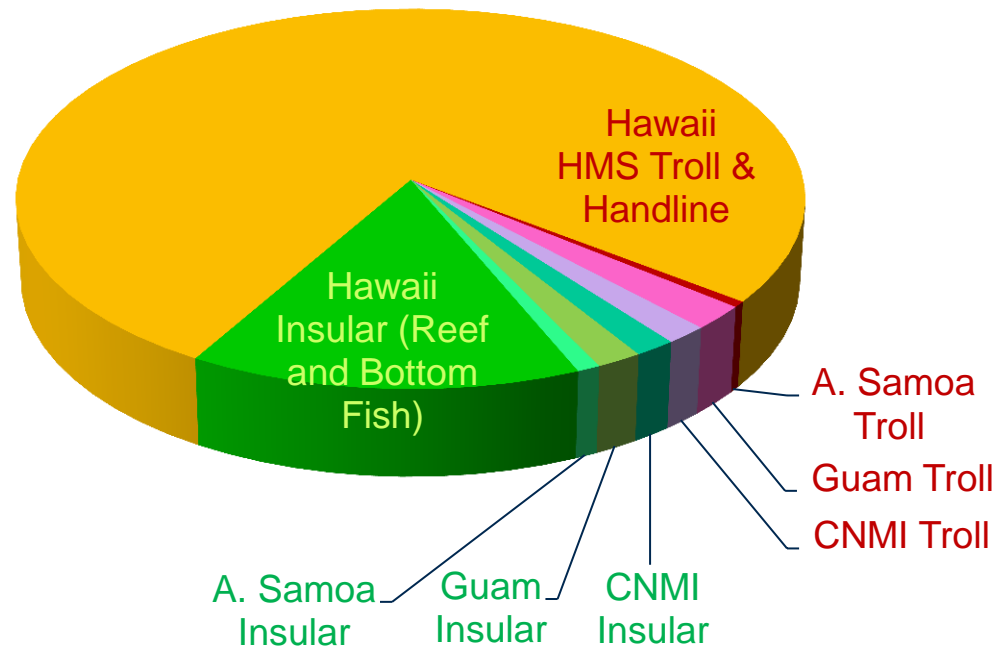
Recent Commercial Landings and Value of Insular Fisheries

TOTAL US HMS LANDINGS were 220,000 mt
=500 million pounds (worth \$500 million FOB)



IN COMPARISON:

COMMERCIAL LANDINGS by small-vessel and shore-based fisheries ~ 3,000 mt = 7 million lbs
(HMS worth \$10 million, Insular worth \$5 million FOB)



A comparison of these two smallest HMS fisheries (pink and orange wedges) with all of the State and Territory small-vessel and shore-based fisheries for insular species (bottom and reef fish, in shades of green) is shown on the right

Recent Landings of Small-Vessel Insular Bottomfish Fisheries

Commercial Landings of ~ 380,000 pounds



Bottomfish in Hawaii Highly Controlled by Both State and Federal Agencies

Not the Case for Much Smaller Fisheries in the Territories

Recreational Catch Poorly Known

