

HAWAII BOTTOMFISH SURVEY

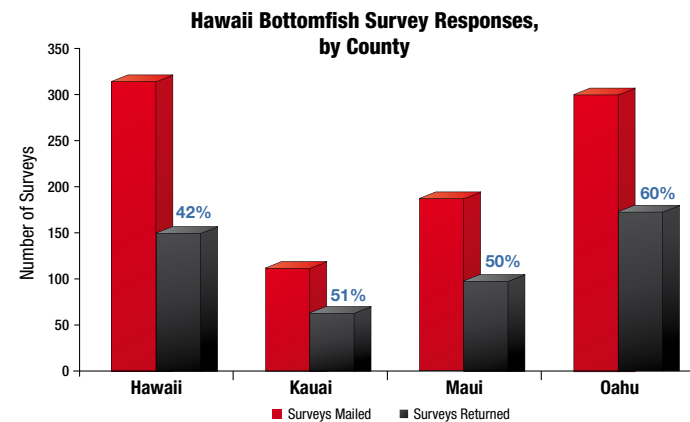
NOAA's Pacific Islands Fisheries Science Center conducted the Hawaii Bottomfish Survey in 2010 to estimate the important economic contributions bottomfish fishing activities provide to the State of Hawaii and to establish a baseline for assessing the economic impacts of future management plans, management alternatives and actions. All commercial marine license holders who reported the catch of any bottomfish management unit species since November 2008 received a survey. Additionally, all noncommercial bottomfish permit holders also received a survey.

WHO RESPONDED?

Surveys Mailed: 1,012

Returned and Completed Surveys: 519

Response from commercial marine license holders (52%) was greater than noncommercial permit fishermen (43%). Additionally, response from active Deep 7 fishermen (60%) was greater than fishermen who do not catch Deep 7 species (46%).



Bottomfish Traditions

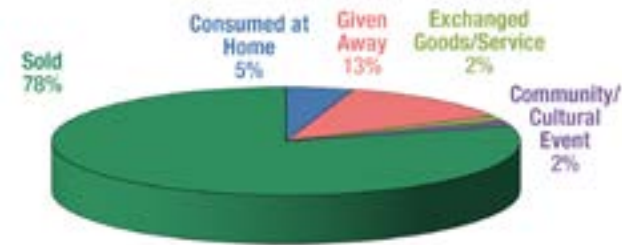
Bottomfish fishermen have been targeting bottomfish for an average of 19 years

78% of bottomfish fishermen are older than 45 years old

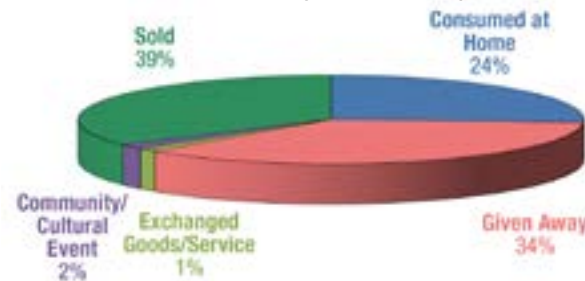
51% of bottomfish fishermen are 55 years or older

WHAT DO YOU DO WITH YOUR BOTTOMFISH CATCH?

Bottomfish fishermen who sold bottomfish and reported catch **GREATER THAN** 1000 pounds in the past 12 months:



Bottomfish fishermen who sold bottomfish and reported catch **LESS THAN** 1000 pounds in the past 12 months:



Are the bottomfish you catch an important source of food for your family?

63% SAY YES

BY COUNTY...

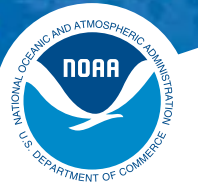
Kauai 63%	Maui 78%
Oahu 51%	Hawaii 65%

Are the nonbottomfish you catch an important source of food for your family?

70% SAY YES

BY COUNTY...

Kauai 70%	Maui 80%
Oahu 58%	Hawaii 79%



Mahalo for your participation

If you are interested in additional information about this survey

Contact

808-725-5300

nmfs.pic.socioeconomics@noaa.gov

NOAA Fisheries

Pacific Islands Fisheries Science Center

www.pifsc.noaa.gov



Hawaii Bottomfish Survey

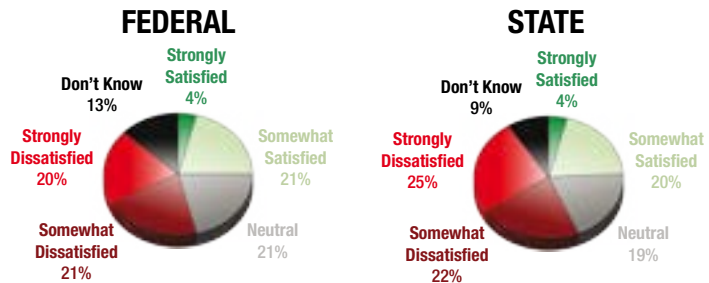
2010

U.S. Department of Commerce
National Oceanic and Atmospheric Administration
National Marine Fisheries Service

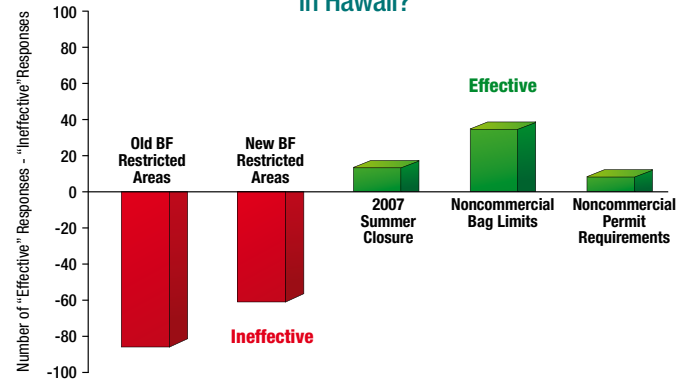


YOUR THOUGHTS ON BOTTOMFISH MANAGEMENT

How satisfied are you with bottomfish management agencies?



What is your opinion of previous and current management actions on promoting a sustainable bottomfish fishery in Hawaii?



Bottomfish fishermen believe strongly that bottomfish restricted areas have been ineffective. On the other hand, the 2007 summer closure and noncommercial regulations are viewed as slightly effective.

YOUR BOTTOMFISH TRIPS

Median number of bottomfish trips in past 12 months:

6 TRIPS

BY COUNTY...

Kauai	6
Oahu	6
Maui	9
Hawaii	4

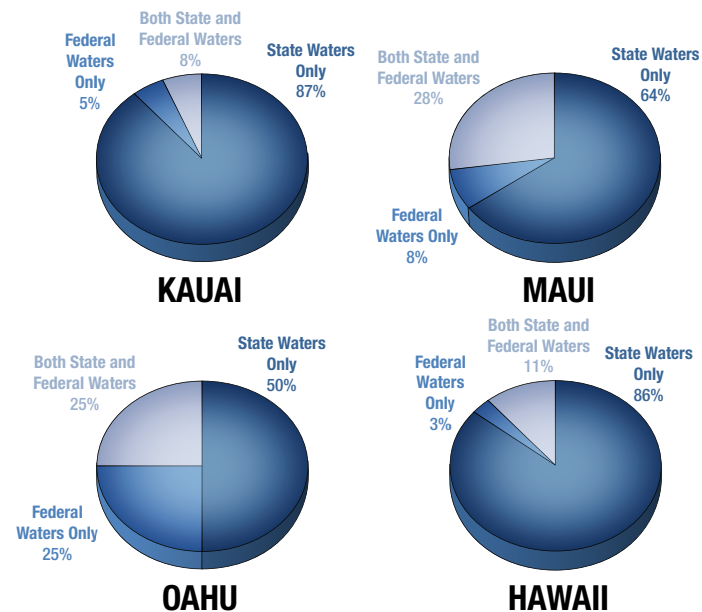
Percentage of bottomfish fishermen who primarily target deep 7 species:

59%

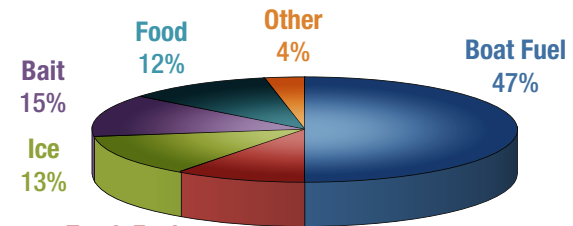
BY COUNTY...

Kauai	53%
Oahu	54%
Maui	61%
Hawaii	66%

In the past 12 months, how many of your bottomfish trips did you fish for bottomfish in:



MEDIAN TRIP COST
How much money was spent on your most recent bottomfish trip? (Median trip cost)



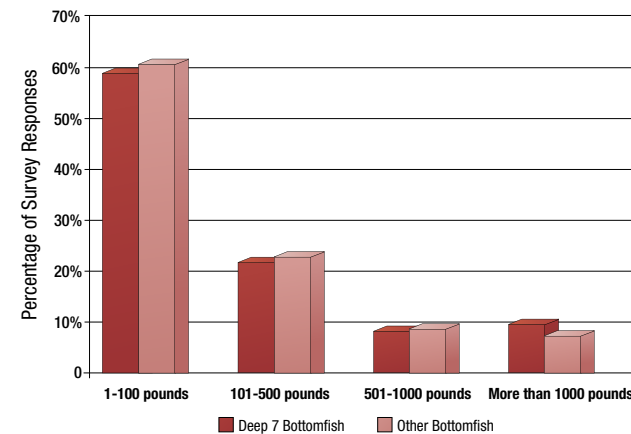
\$160

BY COUNTY...

Kauai	\$120	Maui	\$190
Oahu	\$175	Hawaii	\$145



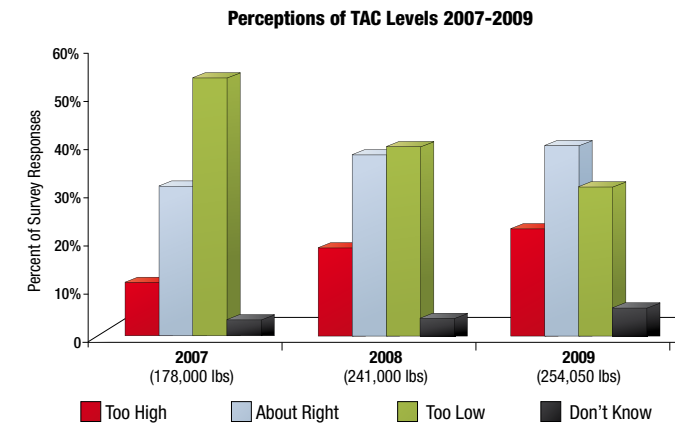
In the past 12 months, approximately how many total pounds of bottomfish did you catch?



YOUR THOUGHTS ON TOTAL ALLOWABLE CATCH (TAC) LIMITS

54% of bottomfish fishermen agree that a total allowable catch (TAC) limit was needed to maintain a sustainable bottomfish fishery

Do you feel the TAC level in each year was set...?



What characteristics of a TAC program would you support?

