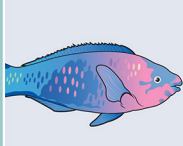
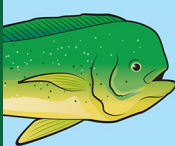




Hawaii Small Boat Survey 2014



The NOAA Pacific Islands Fisheries Science Center will be conducting a socioeconomic study of Hawaii's small-boat commercial fishing fleet. This study is particularly important because it will provide resource managers with the kind of economic information that is needed to ensure a healthy future for marine fisheries around the Hawaiian Islands.

The survey will be initiated during the summer of 2014, with questions designed to examine economic and cultural aspects of small-boat fishing and the ways in which the small-boat fleet contributes to Hawaii's economy.

Survey forms will be mailed to commercial marine license (CML) holders and an online survey option will also be available. Individual response will be kept strictly confidential and research findings will be presented in summary form. Respondents who wish will receive a copy of the research report. We encourage your participation in this important study.

Questions about this project and NOAA Fisheries' mission in the Pacific Islands may be directed to Dr. Minling Pan at minling.pan@noaa.gov.



**NOAA
FISHERIES**