

Department of Marine & Wildlife Resources
Report on the NMFS Logbook Program for the
American Samoa Longline Fishery
April-June 2003

September 19, 2003

The Department of Marine and Wildlife Resources (DMWR) began processing the longline logbook data locally at the beginning of the year 2000 and very significant progress has been made to improve compliance of reporting requirements in the American Samoa longline fishery. Logbook data in this report are summarized by date of haul as shown in the following table. All submitted logbook data for longline activities during the second quarter of 2003 have been processed and are reported in this preliminary report. As of April 11, 2003, the documented delinquency rate according to the DMWR Daily Effort Census and Delinquency Reporting System for the second quarter of 2003 was 12.44%. The summary data in this report are considered preliminary and subject to change as additional delinquent data are received and processed.

According to the Daily Effort Census, 49 vessels were engaged in longline fishing during the second quarter of 2003 and 39 of these vessels turned in some or all of their longline logs for sets made during the quarter. These 39 vessels made 1,443 sets and set 3,550,389 hooks. Compared to the second quarter of 2002, this is less than half of the number of sets made with a 23.5% decrease in the number of hooks set. The average number of hooks per set increased from 1,916 to 2,460 caused primarily by the relative increase in the activity of the large vessels in the fleet which set more hooks per set than the smaller alia fleet.

Albacore continued to dominate the catch with only 65,670 fish caught in the quarter of 2003. This is a dramatic decrease of only 44.8% of the 118,990 albacores caught in the second quarter of 2002 and an increase to 176.6% of the albacore catch for the first quarter of 2003. The total catch of all species only decreased by 21.6% indicating a diversification away from an almost all albacore catch. Indeed catches of other species increased dramatically with skipjack tuna catches increasing by 190.2%, yellow fin tuna increasing by 180.4%, big eye tuna increasing by 166.8% and the catch of Wahoo only increased by 16.9%. But the catch of mahi-mahi decreased by 19.7%, the catch of billfish by 15.2% and the catch of sharks by 20.8%.

The total CPUE decreased by 20.2%, mostly due to the dramatic decreased of Albacore CPUE. Albacore CPUE decreased to 43.8% of its one year ago quarter value to 18.50 fish per 1000 hooks. This is close to the all time low of 16.80 fishes per 1000 hooks for second quarters. The Albacore CPUE increased to 57.4% of its previous quarter value which has been the lowest for all the quarter since 1997. At the reverse, CPUE for skipjack increased by 195.6%, yellow fin also increased by 185.4%, big eye tuna increased by 171.7% and Wahoo only by 18.9% compared to second quarter of 2002. The catch rates of mahi-mahi decreased by 18.5%, catch rates of billfishes decreased by 13.9% and catch rates for sharks decreased by 19.5%.

These results show two main things. First the average size of the boats is more and more important, as the smalls boats which make short trips with smalls sets of hooks make less and less benefits. The second is that the Albacore catches continue to decrease in a dramatic way.

Western Pacific Logbook Summary Report for 2nd Quarter 2003

Vessels landing or based in American Samoa

Based on Date of Haul for all areas

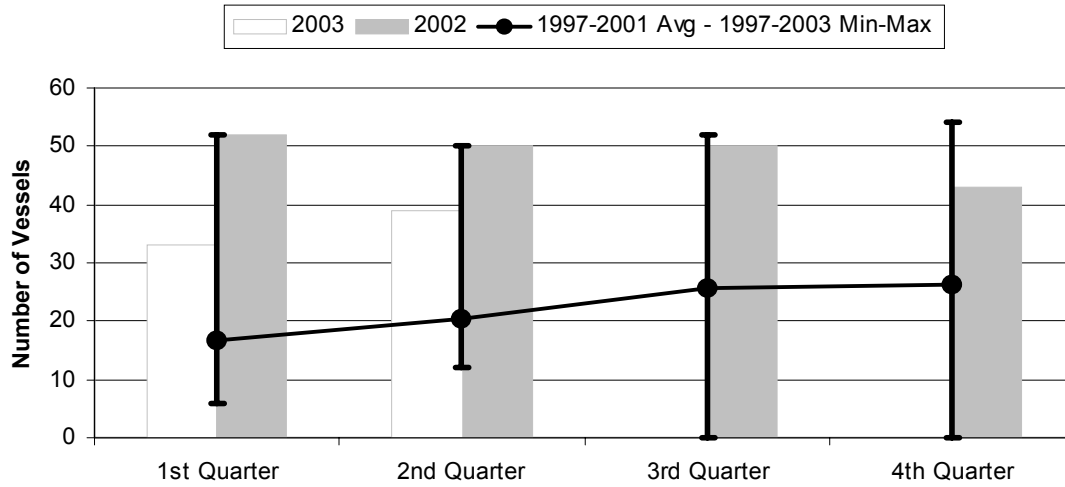
TRIP INFORMATION

Number of Vessels:	39
Number of Sets:	1443
1000's of Hooks Set:	3550
Number of Lightsticks Used:	2499

CATCH INFORMATION

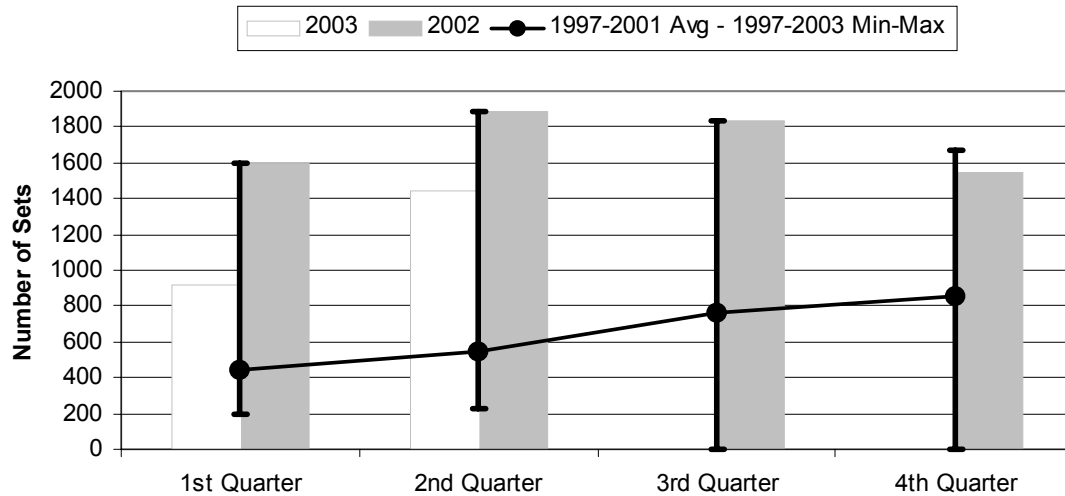
Species	# Caught	# Kept	# Finned	# Caught/ 1000 Hooks
BILLFISH				
Black marlin	11	3		0.00
Blue marlin	728	78		0.21
Striped Marlin	64	3		0.02
Sailfish	168	30		0.05
Spearfish	140	35		0.04
Swordfish	80	28		0.02
TOTALS	1191	177		0.34
SHARKS				
Blue shark	1896	22		0.53
Mako Shark	43	0		0.01
Thresher Shark	83	1		0.02
White-Tip Shark	655	7		0.18
Other Sharks	143	0		0.04
TOTALS	2820	30		0.79
TUNA				
Albacore	65670	65663		18.50
Bigeye Tuna	7465	6950		2.10
Bluefin Tuna	60	55		0.02
Skipjack Tuna	14483	9774		4.08
Yellowfin Tuna	14122	13376		3.98
TOTALS	101800	95818		28.67
OTHER PELAGICS				
Mahimahi	786	505		0.22
Moonfish	238	41		0.07
Oilfish	1318	23		0.37
Pomfret	320	96		0.09
Wahoo	2798	2415		0.79
TOTALS	5460	3080		1.54
NON-PMUS				
Other Pelagic Fish	554	26		0.16
TOTALS	554	26		0.16

Figure 1. American Samoa Longline Vessels Submitting Logs by Quarter for



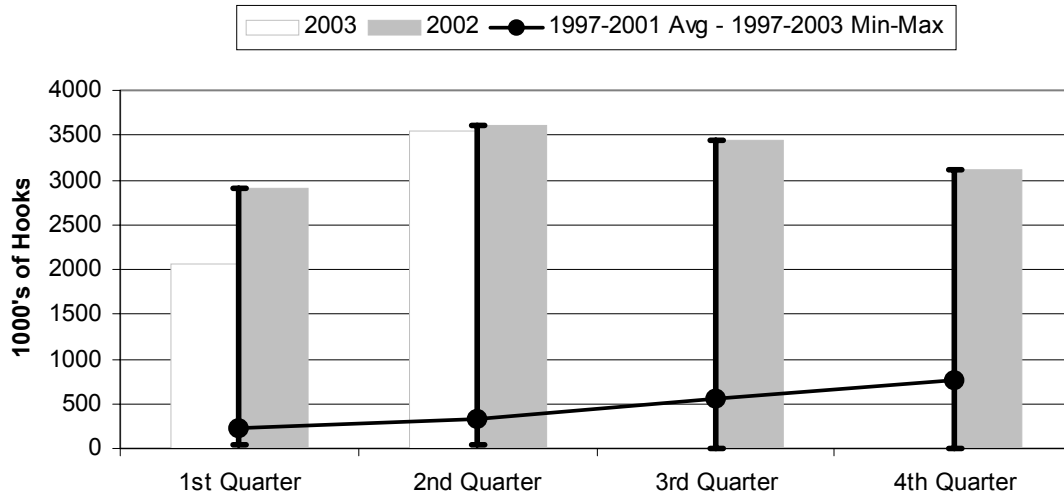
	1st Quarter	2nd Quarter	3rd Quarter	4th Quarter
2003	33	39	0	0
2002	52	50	50	43
1997-2003 Max	52	50	52	54
1997-2001 Avg	16.8	20.4	25.8	26.2
1997-2003 Min	6	12	0	0

Figure 2. Number of Sets by American Samoa Longline Vessels by Quarter for



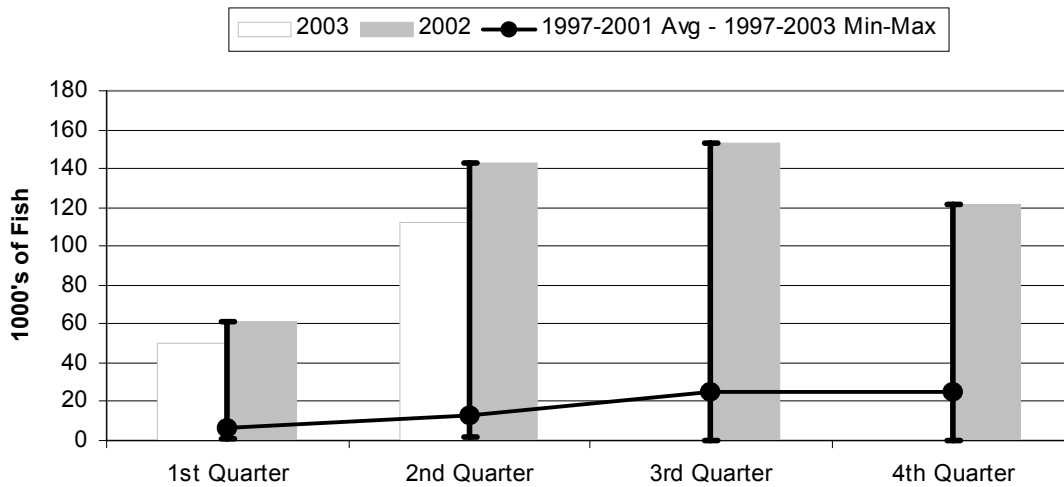
	1st Quarter	2nd Quarter	3rd Quarter	4th Quarter
2003	920	1443	0	0
2002	1602	1886	1831	1543
1997-2003 Max	1602	1886	1831	1665
1997-2001 Avg	441	543	766	854
1997-2003 Min	192	222	0	0

Figure 3. Number of Hooks Set by the American Samoa Longline Fleet by Quarter for



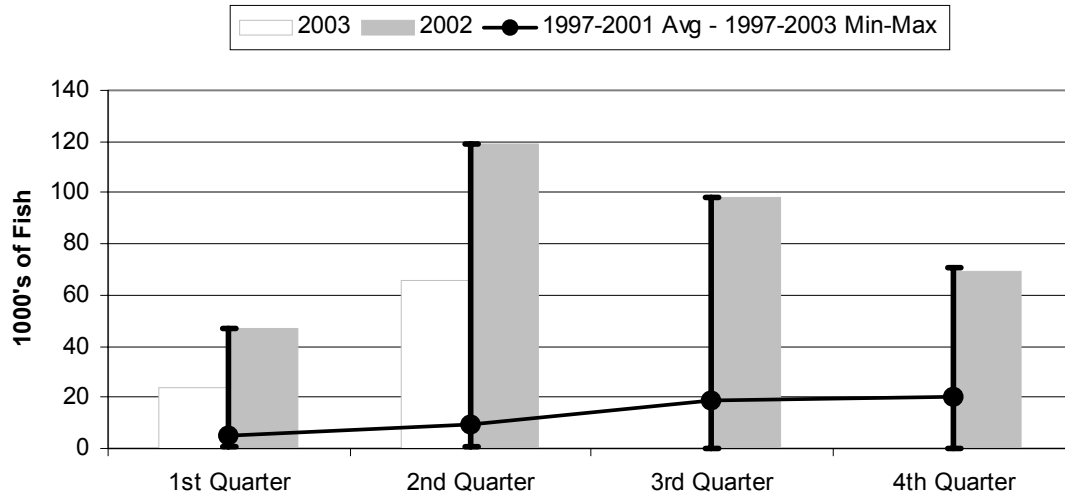
	1st Quarter	2nd Quarter	3rd Quarter	4th Quarter
2003	2070	3550	0	0
2002	2904	3613	3453	3107
1997-2003 Max	2904	3613	3453	3107
1997-2001 Avg	221	324	547	756
1997-2003 Min	41	51	0	0

Figure 4. American Samoa Longline Total Catch (All Species) by Quarter for



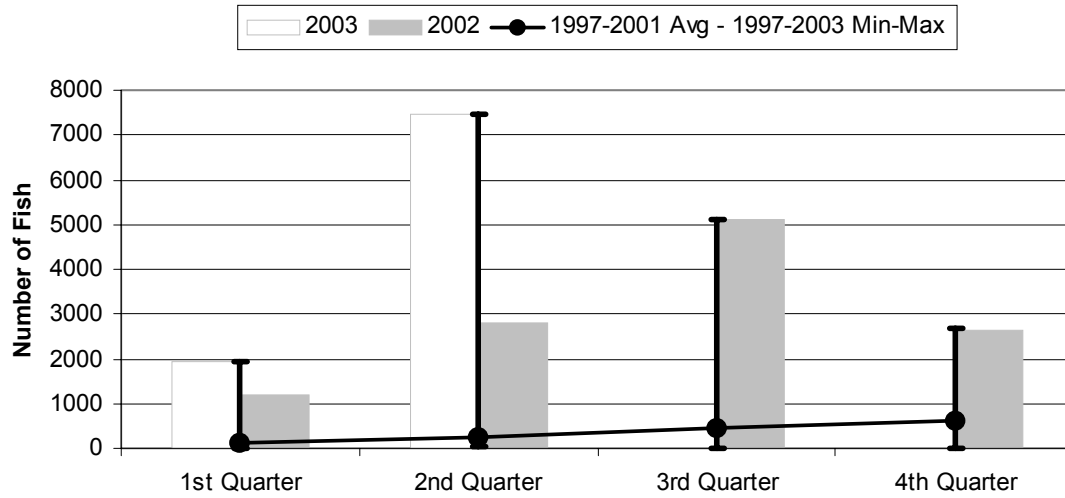
	1st Quarter	2nd Quarter	3rd Quarter	4th Quarter
2003	50.12	111.83	0.00	0.00
2002	61.24	142.60	153.23	121.83
1997-2003 Max	61.24	142.60	153.23	121.83
1997-2001 Avg	6.65	13.31	25.10	25.30
1997-2003 Min	1.32	1.41	0.00	0.00

Figure 5. American Samoa Longline Albacore Catch by Quarter for



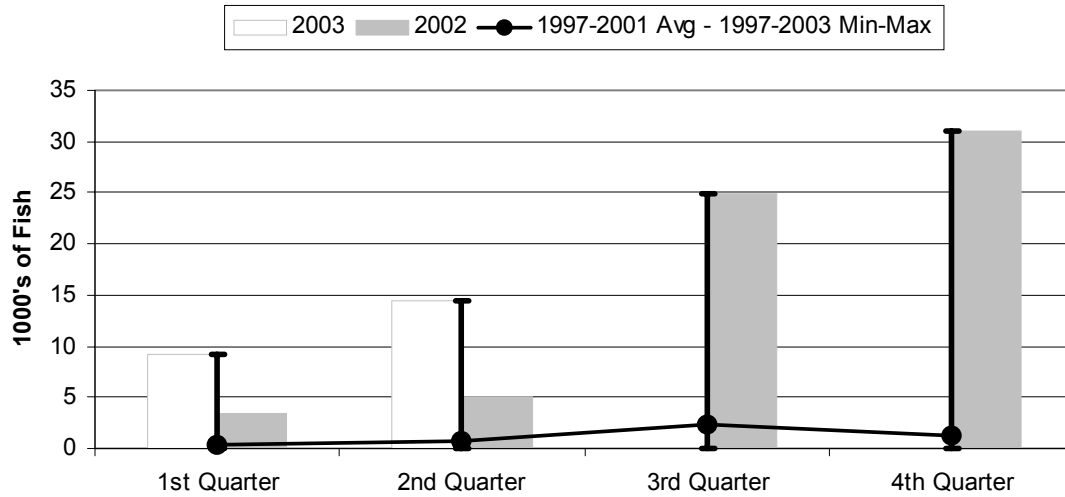
	1st Quarter	2nd Quarter	3rd Quarter	4th Quarter
2003	23.74	65.67	0.00	0.00
2002	46.98	118.99	98.03	69.21
1997-2003 Max	46.98	118.99	98.03	70.53
1997-2001 Avg	4.91	9.65	18.83	20.30
1997-2003 Min	0.94	0.85	0.00	0.00

Figure 6. American Samoa Longline Bigeye Tuna Catch by Quarter for



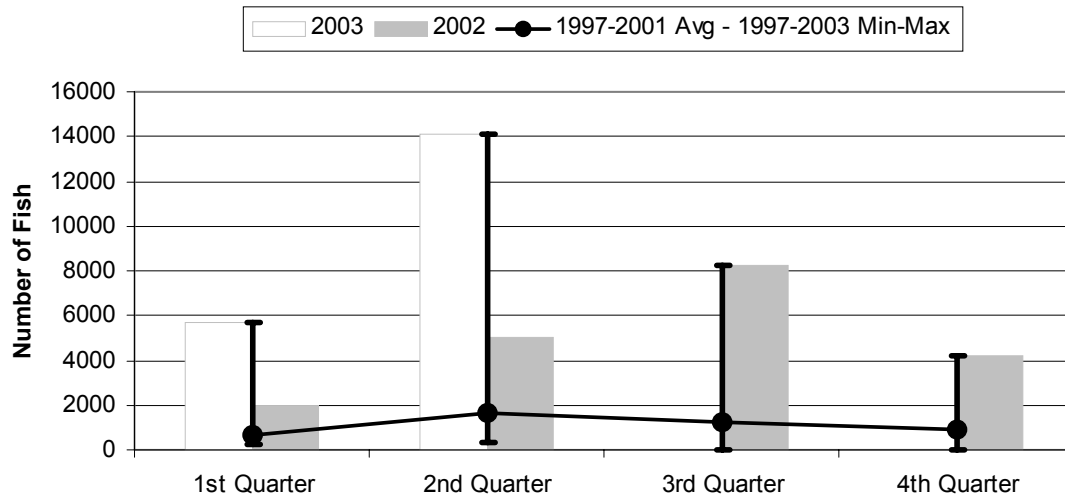
	1st Quarter	2nd Quarter	3rd Quarter	4th Quarter
2003	1930	7465	0	0
2002	1188	2798	5130	2619
1997-2003 Max	1930	7465	5130	2678
1997-2001 Avg	121	251	455	634
1997-2003 Min	6	26	0	0

Figure 7. American Samoa Longline Skipjack Tuna Catch by Quarter for



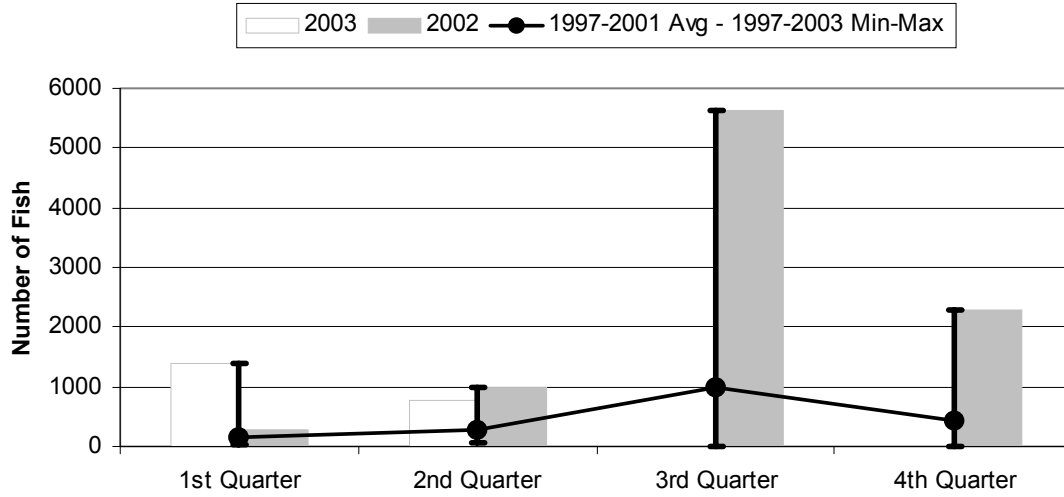
	1st Quarter	2nd Quarter	3rd Quarter	4th Quarter
2003	9.20	14.48	0.00	0.00
2002	3.37	4.99	24.86	31.11
1997-2003 Max	9.20	14.48	24.86	31.11
1997-2001 Avg	0.28	0.68	2.27	1.24
1997-2003 Min	0.00	0.01	0.00	0.00

Figure 8. American Samoa Longline Yellowfin Tuna Catch by Quarter for



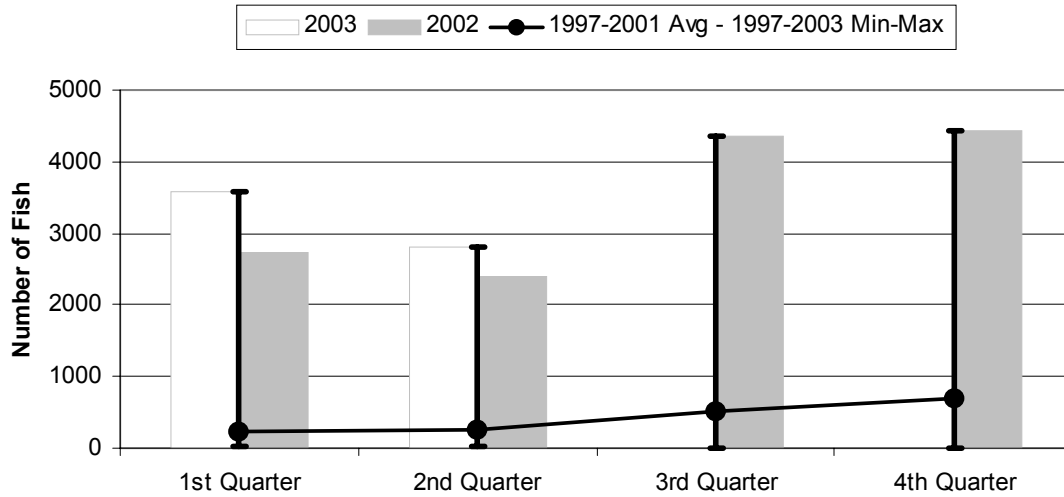
	1st Quarter	2nd Quarter	3rd Quarter	4th Quarter
2003	5677	14122	0	0
2002	2017	5037	8241	4181
1997-2003 Max	5677	14122	8241	4181
1997-2001 Avg	669	1673	1212	874
1997-2003 Min	213	356	0	0

Figure 9. American Samoa Mahimahi Catch by Quarter for



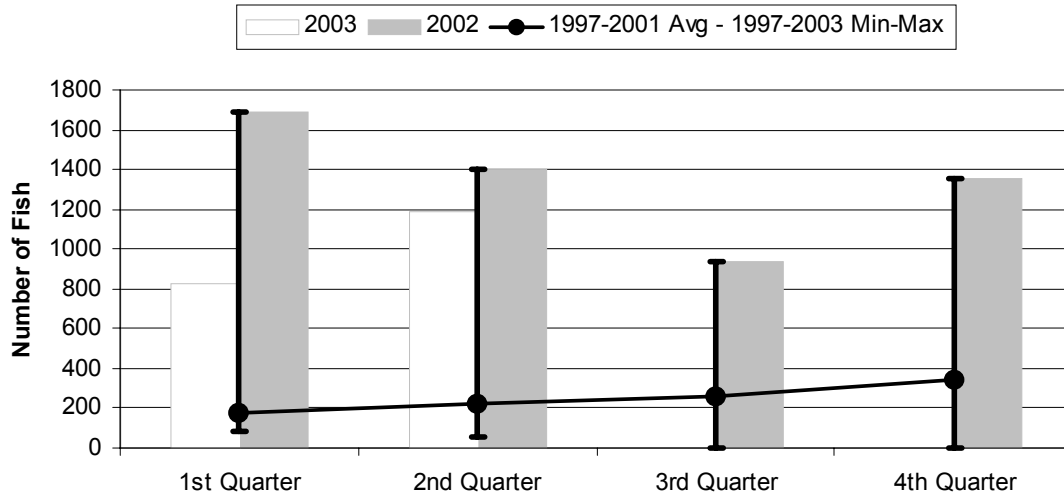
	1st Quarter	2nd Quarter	3rd Quarter	4th Quarter
2003	1379	786	0	0
2002	263	979	5642	2287
1997-2003 Max	1379	979	5642	2287
1997-2001 Avg	141	265	987	445
1997-2003 Min	30	59	0	0

Figure 10. American Samoa Wahoo Catch by Quarter for



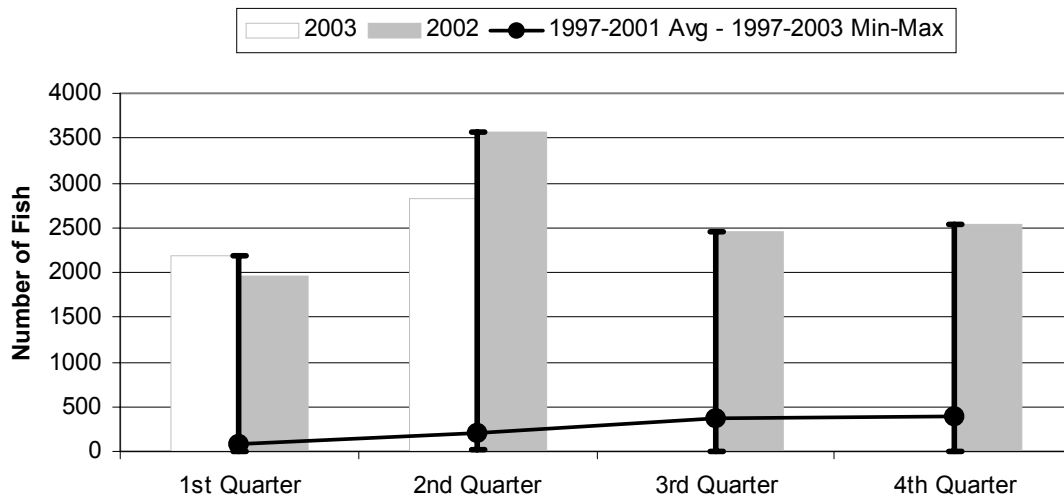
	1st Quarter	2nd Quarter	3rd Quarter	4th Quarter
2003	3570	2798	0	0
2002	2729	2394	4365	4440
1997-2003 Max	3570	2798	4365	4440
1997-2001 Avg	236	259	525	705
1997-2003 Min	27	20	0	0

Figure 11. American Samoa Billfish Catch by Quarter for



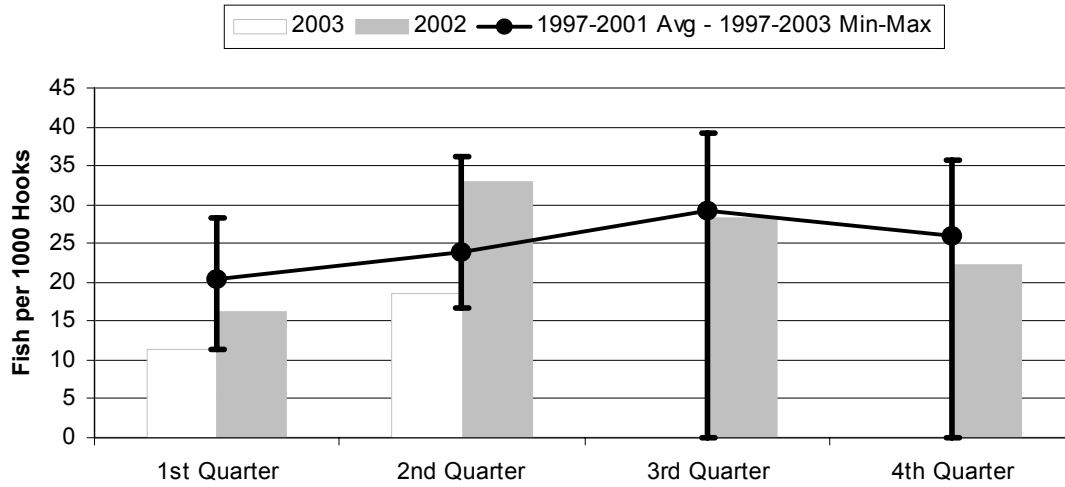
	1st Quarter	2nd Quarter	3rd Quarter	4th Quarter
2003	823	1191	0	0
2002	1692	1404	937	1351
1997-2003 Max	1692	1404	937	1351
1997-2001 Avg	178	224	259	340
1997-2003 Min	83	58	0	0

Figure 12. American Samoa Shark Catch by Quarter for



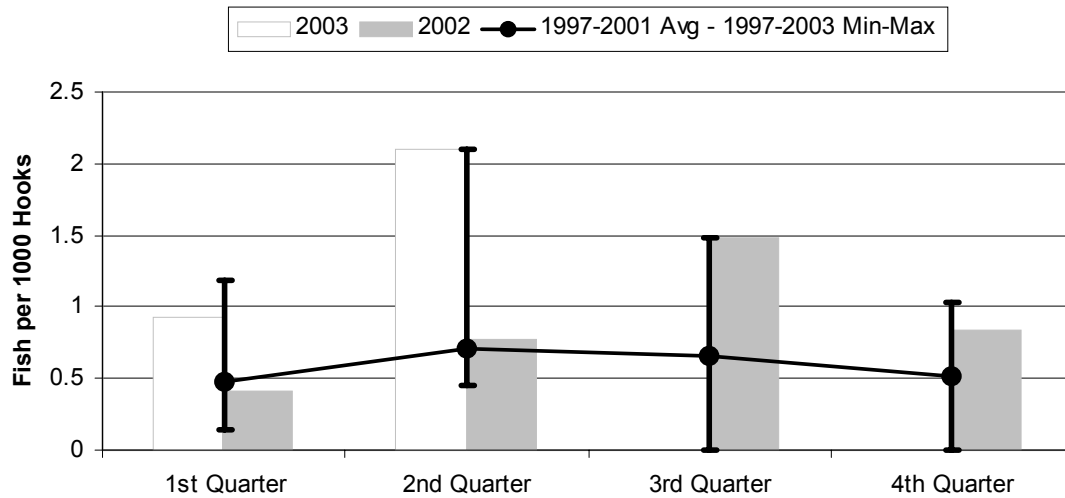
	1st Quarter	2nd Quarter	3rd Quarter	4th Quarter
2003	2191	2820	0	0
2002	1968	3562	2446	2535
1997-2003 Max	2191	3562	2446	2535
1997-2001 Avg	76	203	372	391
1997-2003 Min	5	15	0	0

Figure 13. American Samoa Longline Albacore Catch/1000 Hooks by Quarter for



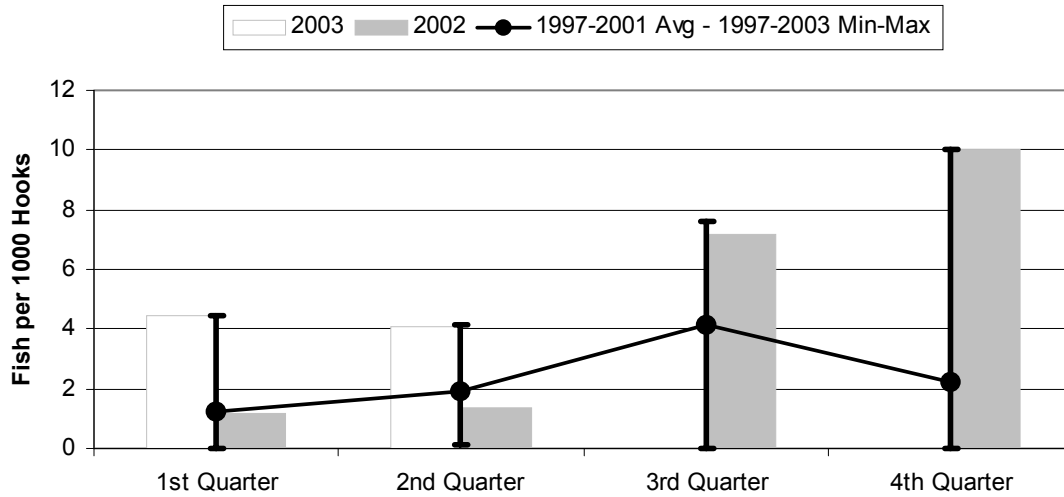
	1st Quarter	2nd Quarter	3rd Quarter	4th Quarter
2003	11.47	18.50	0.00	0.00
2002	16.18	32.93	28.39	22.27
1997-2003 Max	28.33	36.18	39.13	35.68
1997-2001 Avg	20.43	23.78	29.26	26.08
1997-2003 Min	11.47	16.80	0.00	0.00

Figure 14. American Samoa Longline Bigeye Tuna Catch/1000 Hooks by Quarter for



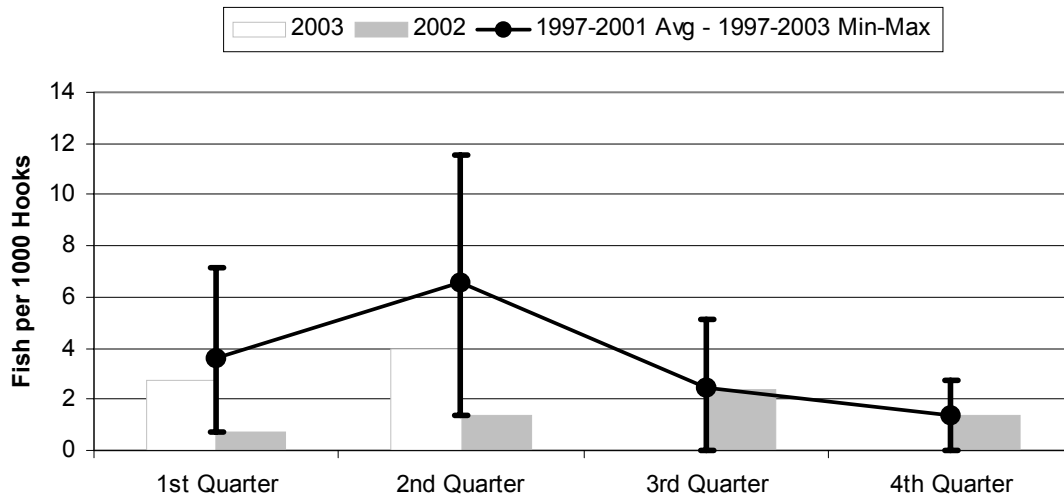
	1st Quarter	2nd Quarter	3rd Quarter	4th Quarter
2003	0.932	2.103	0.000	0.000
2002	0.409	0.774	1.486	0.843
1997-2003 Max	1.185	2.103	1.486	1.030
1997-2001 Avg	0.471	0.710	0.653	0.518
1997-2003 Min	0.146	0.452	0.000	0.000

Figure 15. American Samoa Longline Skipjack Tuna Catch/1000 Hooks by Quarter for



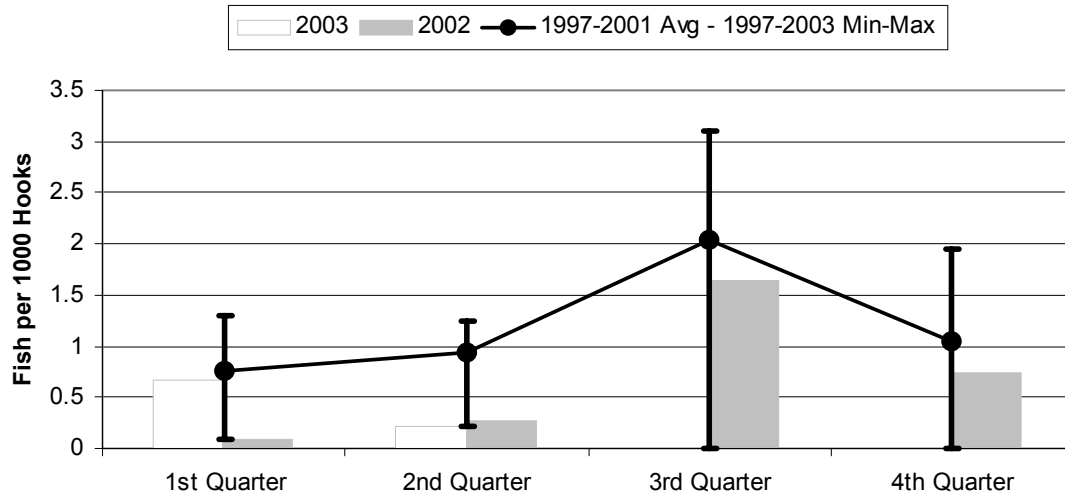
	1st Quarter	2nd Quarter	3rd Quarter	4th Quarter
2003	4.445	4.079	0.000	0.000
2002	1.160	1.380	7.199	10.01
1997-2003 Max	4.445	4.155	7.615	10.01
1997-2001 Avg	1.238	1.923	4.148	2.257
1997-2003 Min	0.000	0.119	0.000	0.000

Figure 16. American Samoa Yellowfin Tuna Catch/1000 Hooks by Quarter for



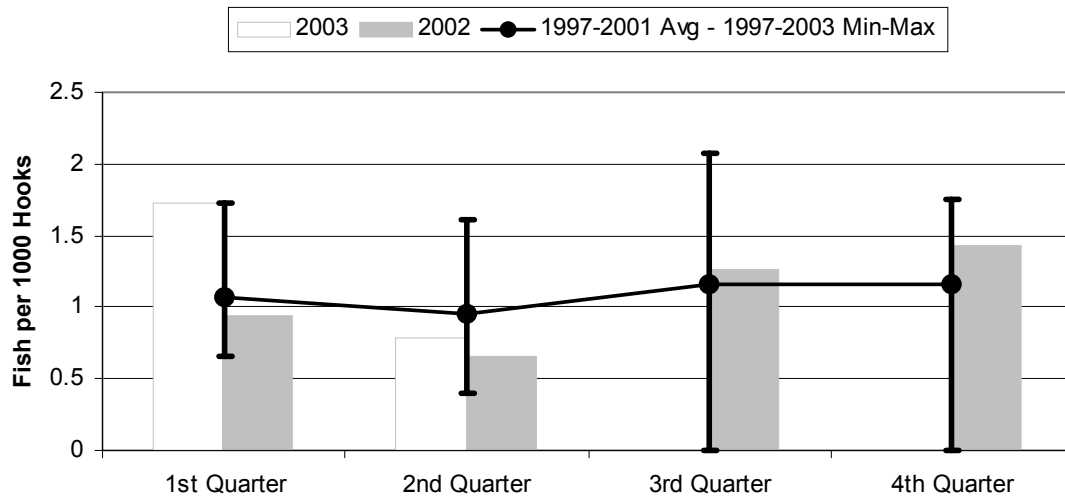
	1st Quarter	2nd Quarter	3rd Quarter	4th Quarter
2003	2.742	3.978	0.000	0.000
2002	0.695	1.394	2.387	1.346
1997-2003 Max	7.139	11.57	5.088	2.759
1997-2001 Avg	3.580	6.600	2.428	1.407
1997-2003 Min	0.695	1.394	0.000	0.000

Figure 17. American Samoa Longline Mahimahi Catch/1000 Hooks by Quarter for



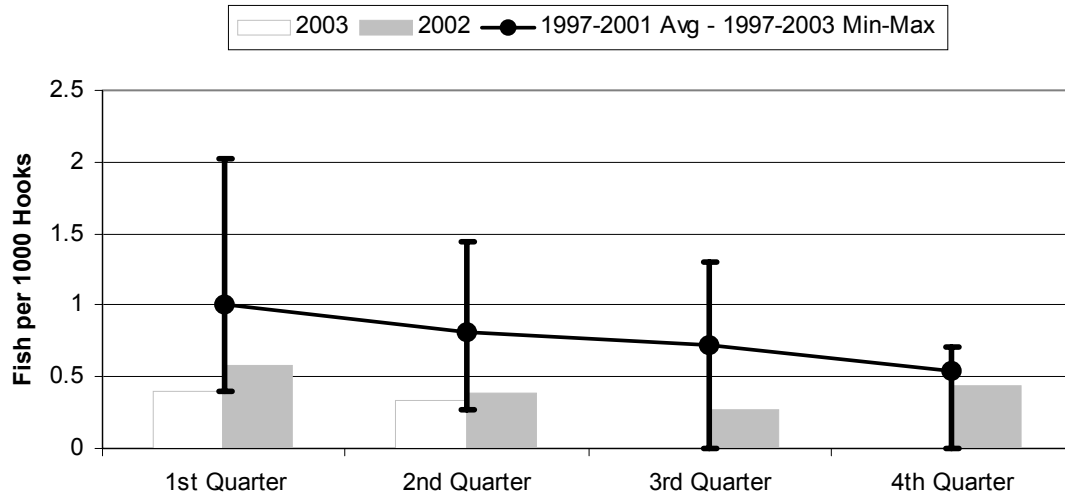
	1st Quarter	2nd Quarter	3rd Quarter	4th Quarter
2003	0.666	0.221	0.000	0.000
2002	0.091	0.271	1.634	0.736
1997-2003 Max	1.305	1.248	3.106	1.940
1997-2001 Avg	0.758	0.947	2.036	1.053
1997-2003 Min	0.091	0.221	0.000	0.000

Figure 18. American Samoa Wahoo Catch/1000 Hooks by Quarter for



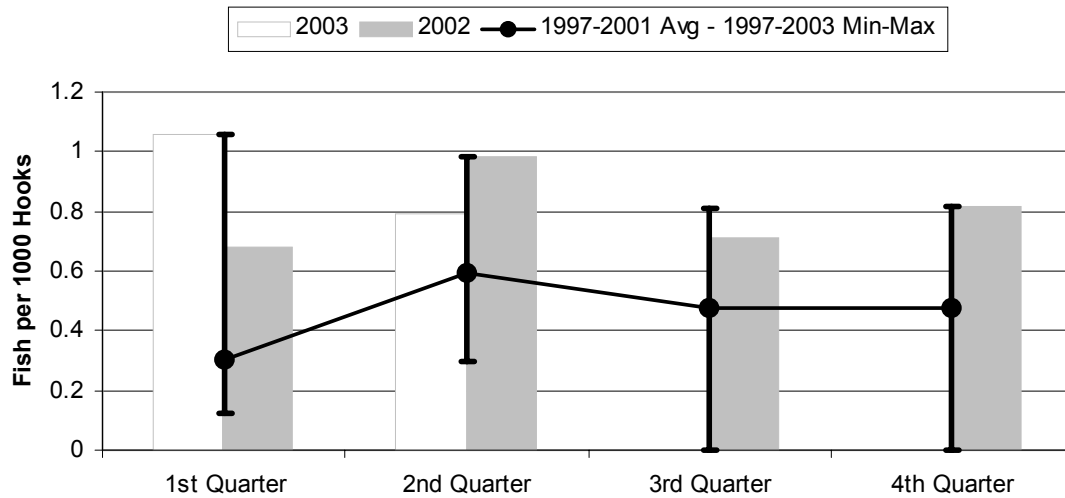
	1st Quarter	2nd Quarter	3rd Quarter	4th Quarter
2003	1.724	0.788	0.000	0.000
2002	0.940	0.663	1.264	1.429
1997-2003 Max	1.724	1.617	2.080	1.755
1997-2001 Avg	1.075	0.957	1.165	1.157
1997-2003 Min	0.657	0.396	0.000	0.000

Figure 19. American Samoa Billfish Catch/1000 Hooks by Quarter for



	1st Quarter	2nd Quarter	3rd Quarter	4th Quarter
2003	0.398	0.335	0.000	0.000
2002	0.583	0.389	0.271	0.435
1997-2003 Max	2.019	1.444	1.298	0.713
1997-2001 Avg	1.000	0.812	0.726	0.536
1997-2003 Min	0.398	0.268	0.000	0.000

Figure 20. American Samoa Shark Catch/1000 Hooks by Quarter for



	1st Quarter	2nd Quarter	3rd Quarter	4th Quarter
2003	1.058	0.794	0.000	0.000
2002	0.678	0.986	0.708	0.816
1997-2003 Max	1.058	0.986	0.810	0.816
1997-2001 Avg	0.301	0.595	0.477	0.475
1997-2003 Min	0.122	0.297	0.000	0.000