

Department of Marine & Wildlife Resources
Report on the NMFS Logbook Program for the
American Samoa Longline Fishery
April-June 2004

August 25, 2004

The Department of Marine and Wildlife Resources (DMWR) began processing the longline logbook data locally at the beginning of the year 2000 and very significant progress has been made to improve compliance of reporting requirements in the American Samoa longline fishery. Logbook data in this report are summarized by date of haul as shown in the following table. All submitted logbook data for longline activities during the second quarter of 2004 have been processed and are reported in this preliminary report. As of August 25, 2004, the documented delinquency rate according to the DMWR Daily Effort Census and Delinquency Reporting System for the second quarter of 2004 was 9.12%. The summary data in this report are considered preliminary and subject to change as additional delinquent data are received and processed.

According to the Daily Effort Census, 38 vessels were engaged in longline fishing during the second quarter of 2004 and 28 of these vessels turned in some or all of their longline logs for sets made during the quarter (which is 33.3 % less boats than the one year ago value). These 28 vessels made 1,156 sets and set 2,835,966 hooks. Compared to the second quarter of 2003, this is approximately 20 % less than the number of sets made with 714,500 less hooks set compare to last year. The average number of hooks per set remained the same with 2453 hooks per set (2sd quarter 2003 value was 2460 hooks per set).

Albacore continued to dominate the catch with only 52,882 fish caught in the second quarter of 2004. This is an increase of 195 % of the 17,924 albacores caught in the first quarter of 2004, which depict the usual seasonal variation of albacore catches, but a decrease of 19.5% of the albacores caught during the second quarter of 2003 (65,670 fish). The total catch of all species decreased by 26.0%.

Catches of skipjack tuna decreasing by 42.0%, Yellowfin tuna decreasing by 44.7% while big eye decreased by 48.7%. The mahi-mahi catches decreased by 55.7%, while wahoo, shark and bill fish catch varies little (Wahoo's catches increase a lightly by +4.4%). As the number of hooks set has drop by 20% the variations of CPUE moderate the effects of the catches variations.

Overall CPUE decrease by 7.3% compare to second quarter 2003. Albacore CPUE increased by 23.3 % of its previous quarter value and remained nearly the same of its a year ago value to 18.65 fish per 1000 hooks in the second quarter of 2004. The CPUE for all other species of tuna decreased dramatically over their year ago values. The CPUE for skipjack decreased by 27.4% from the quarter a year ago, yellowfin decreased by 30.8 and Big eye by 35.7 % (but the catch rate for this fish has varied erratically during at least the last 6 quarters). It is the fifth quarter in a row that the catch rate for Mahi-mahi decrease compare to their one year ago values. This quarter, the value decreased by 44.5 % to 0.12 Mahi-mahi per 1000 hooks. At the opposite the catch rate for Wahoo increased by 30.7 % (to 1.03 fish/1000 hooks), Billfish by 24.8 % (to 0.42 fish/1000 hooks) and sharks by 21.2% (to 0.96 fish/1000 hooks).

Western Pacific Logbook Summary Report for 2nd Quarter 2004

Vessels landing or based in American Samoa
Based on Date of Haul for all areas

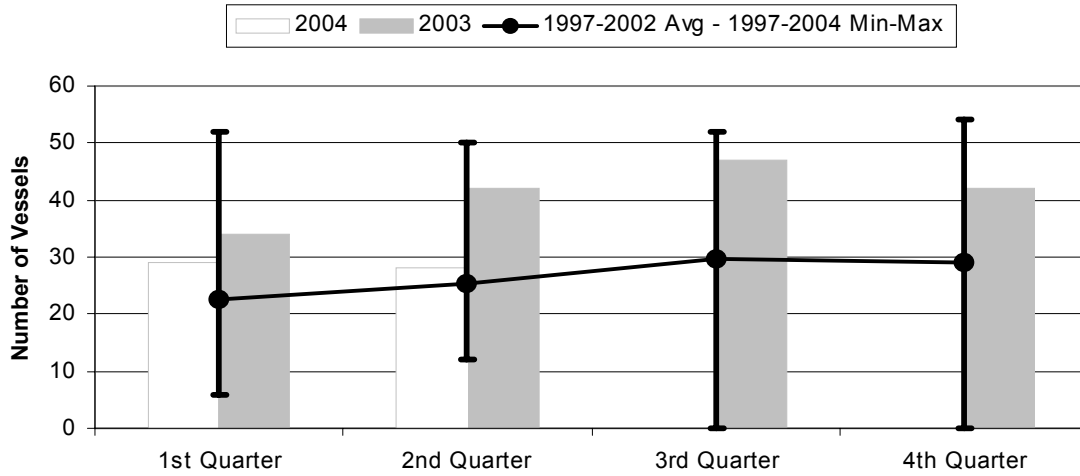
TRIP INFORMATION

Number of Vessels:	28
Number of Sets:	1156
1000's of Hooks Set:	2836
Number of Lightsticks Used:	256

CATCH INFORMATION

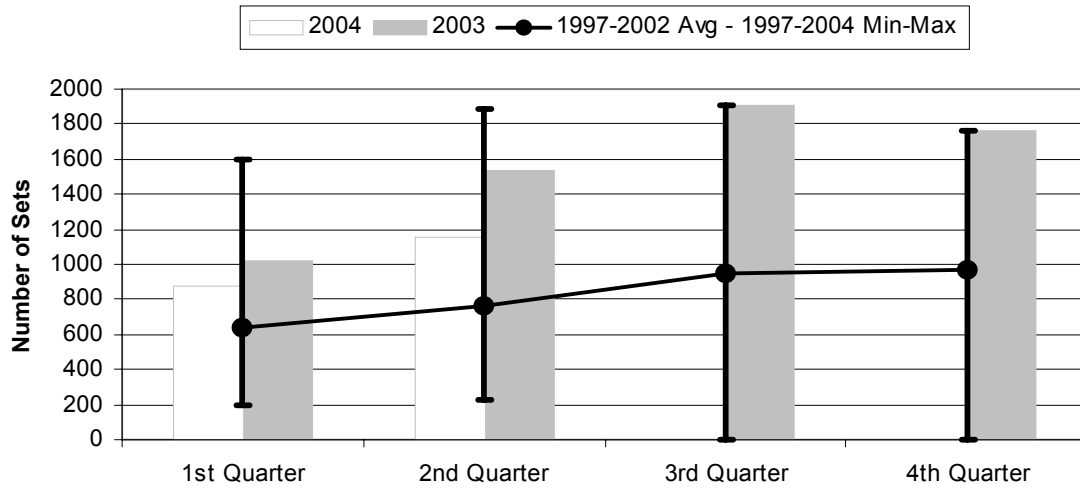
Species	# Caught	# Kept	# Finned	# Caught/ 1000 Hooks
BILLFISH				
Black marlin	6	1		0.00
Blue marlin	593	40		0.21
Striped Marlin	43	7		0.02
Sailfish	202	22		0.07
Spearfish	256	11		0.09
Swordfish	86	24		0.03
TOTALS	1186	105		0.42
SHARKS				
Blue shark	2224	6	1	0.78
Mako Shark	30	0		0.01
Thresher Shark	113	0		0.04
White-Tip Shark	325	0	3	0.11
Other Sharks	37	0		0.01
TOTALS	2729	6	4	0.96
TUNA				
Albacore	52882	52670		18.65
Bigeye Tuna	3833	3667		1.35
Skipjack Tuna	8396	7415		2.96
Yellowfin Tuna	7805	7489		2.75
TOTALS	72916	71241		25.71
OTHER PELAGICS				
Mahimahi	348	256		0.12
Moonfish	155	5		0.05
Oilfish	1944	17		0.69
Pomfret	461	49		0.16
Wahoo	2920	2756		1.03
TOTALS	5828	3083		2.06
NON-PMUS				
Other Pelagic Fish	138	0		0.05
TOTALS	138	0		0.05

Figure 1. American Samoa Longline Vessels Submitting Logs by Quarter for



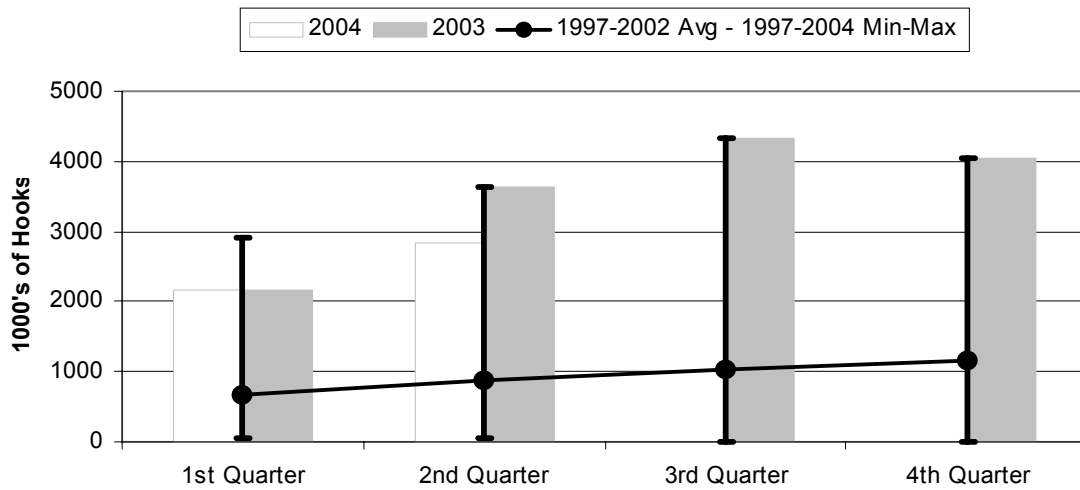
	1st Quarter	2nd Quarter	3rd Quarter	4th Quarter
2004	29	28	0	0
2003	34	42	47	42
1997-2004 Max	52	50	52	54
1997-2002 Avg	22.7	25.3	29.8	29.0
1997-2004 Min	6	12	0	0

Figure 2. Number of Sets by American Samoa Longline Vessels by Quarter for



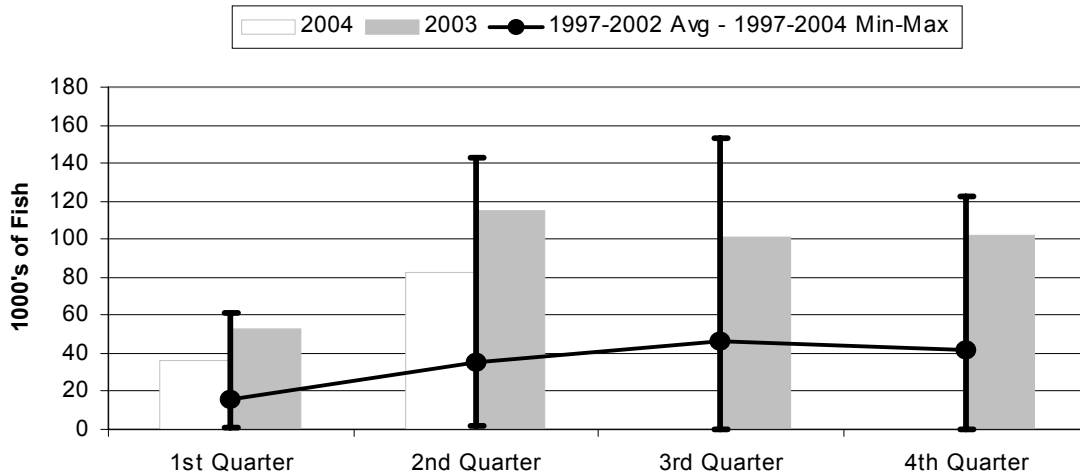
	1st Quarter	2nd Quarter	3rd Quarter	4th Quarter
2004	881	1156	0	0
2003	1018	1541	1903	1758
1997-2004 Max	1602	1886	1903	1758
1997-2002 Avg	635	767	944	971
1997-2004 Min	192	222	0	0

Figure 3. Number of Hooks Set by the American Samoa Longline Fleet by Quarter for



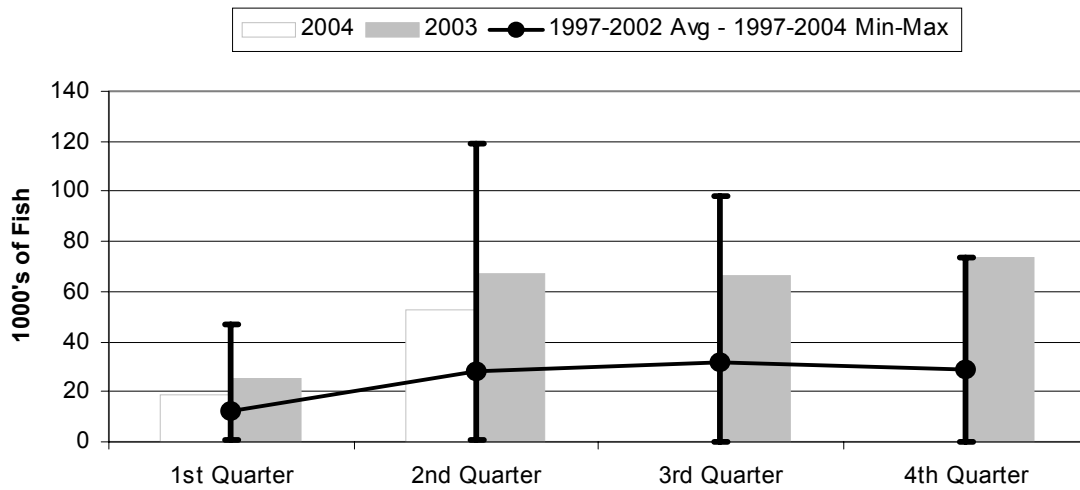
	1st Quarter	2nd Quarter	3rd Quarter	4th Quarter
2004	2159	2836	0	0
2003	2153	3629	4342	4044
1997-2004 Max	2904	3629	4342	4044
1997-2002 Avg	668	872	1032	1151
1997-2004 Min	41	51	0	0

Figure 4. American Samoa Longline Total Catch (All Species) by Quarter for



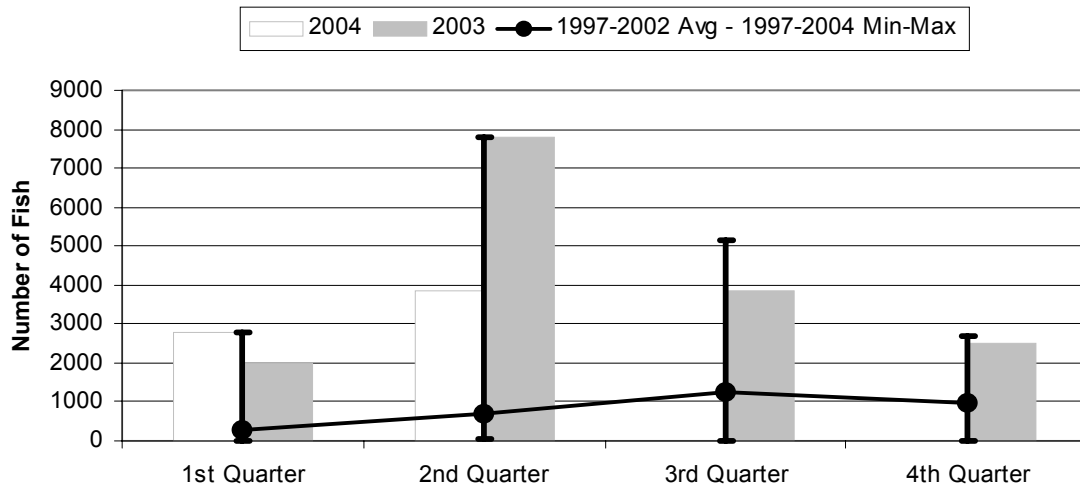
	1st Quarter	2nd Quarter	3rd Quarter	4th Quarter
2004	36.42	82.80	0.00	0.00
2003	52.76	114.75	101.19	101.77
1997-2004 Max	61.24	142.60	153.30	122.34
1997-2002 Avg	15.75	34.86	46.47	41.48
1997-2004 Min	1.32	1.41	0.00	0.00

Figure 5. American Samoa Longline Albacore Catch by Quarter for



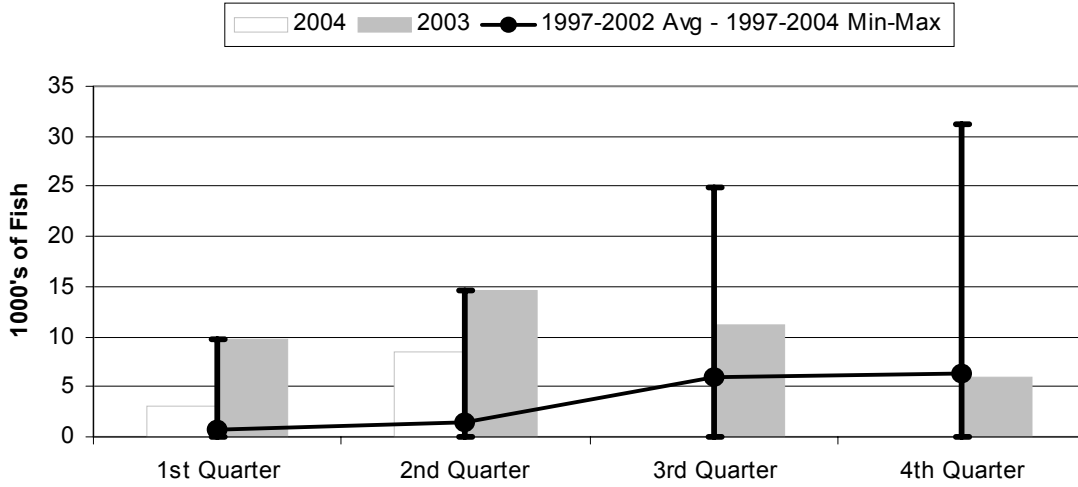
	1st Quarter	2nd Quarter	3rd Quarter	4th Quarter
2004	18.98	52.88	0.00	0.00
2003	25.22	67.35	66.10	73.77
1997-2004 Max	46.98	118.99	98.09	73.77
1997-2002 Avg	11.92	27.88	32.04	28.51
1997-2004 Min	0.94	0.85	0.00	0.00

Figure 6. American Samoa Longline Bigeye Tuna Catch by Quarter for



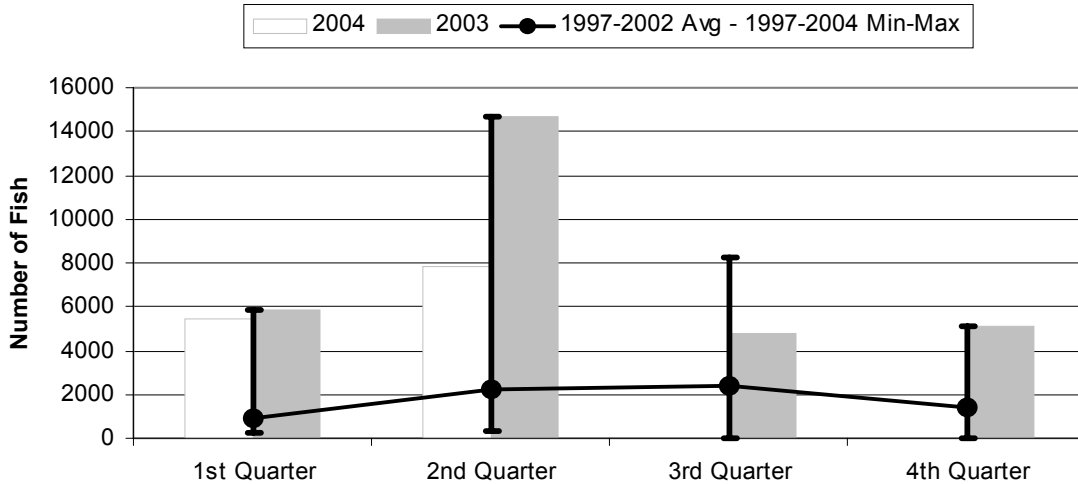
	1st Quarter	2nd Quarter	3rd Quarter	4th Quarter
2004	2770	3833	0	0
2003	1993	7785	3853	2500
1997-2004 Max	2770	7785	5134	2678
1997-2002 Avg	299	675	1235	967
1997-2004 Min	6	26	0	0

Figure 7. American Samoa Longline Skipjack Tuna Catch by Quarter for



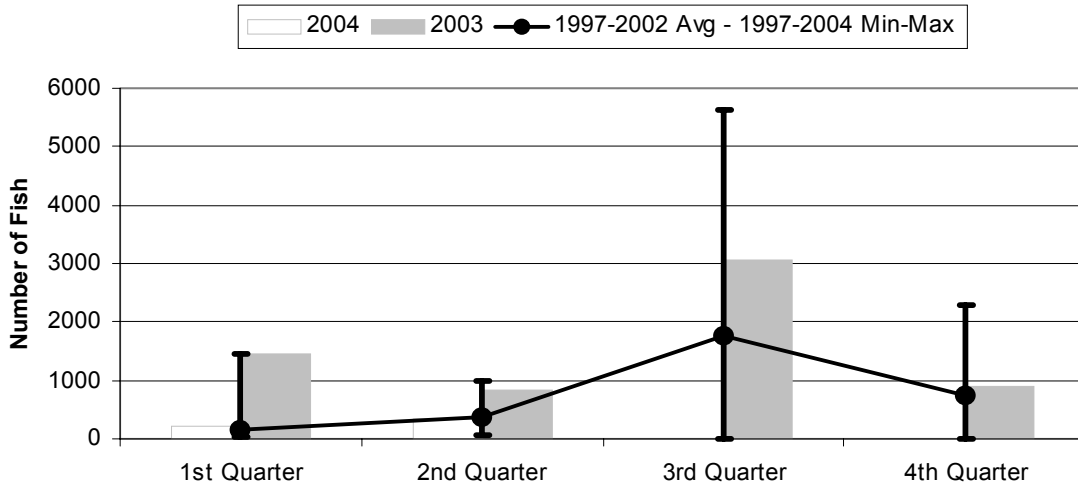
	1st Quarter	2nd Quarter	3rd Quarter	4th Quarter
2004	3.13	8.40	0.00	0.00
2003	9.81	14.61	11.10	6.01
1997-2004 Max	9.81	14.61	24.86	31.19
1997-2002 Avg	0.79	1.40	6.03	6.23
1997-2004 Min	0.00	0.01	0.00	0.00

Figure 8. American Samoa Longline Yellowfin Tuna Catch by Quarter for



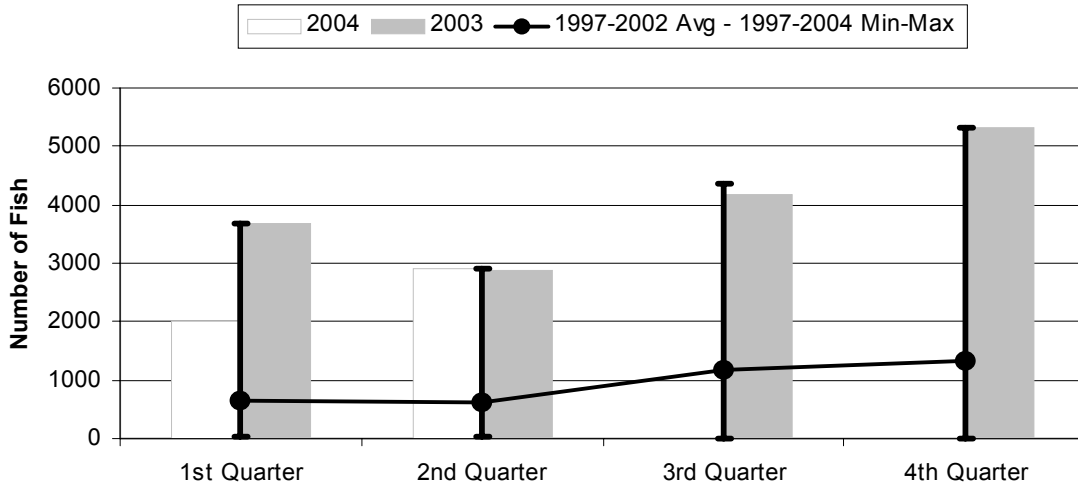
	1st Quarter	2nd Quarter	3rd Quarter	4th Quarter
2004	5471	7805	0	0
2003	5848	14681	4813	5078
1997-2004 Max	5848	14681	8246	5078
1997-2002 Avg	894	2234	2385	1428
1997-2004 Min	213	356	0	0

Figure 9. American Samoa Mahimahi Catch by Quarter for



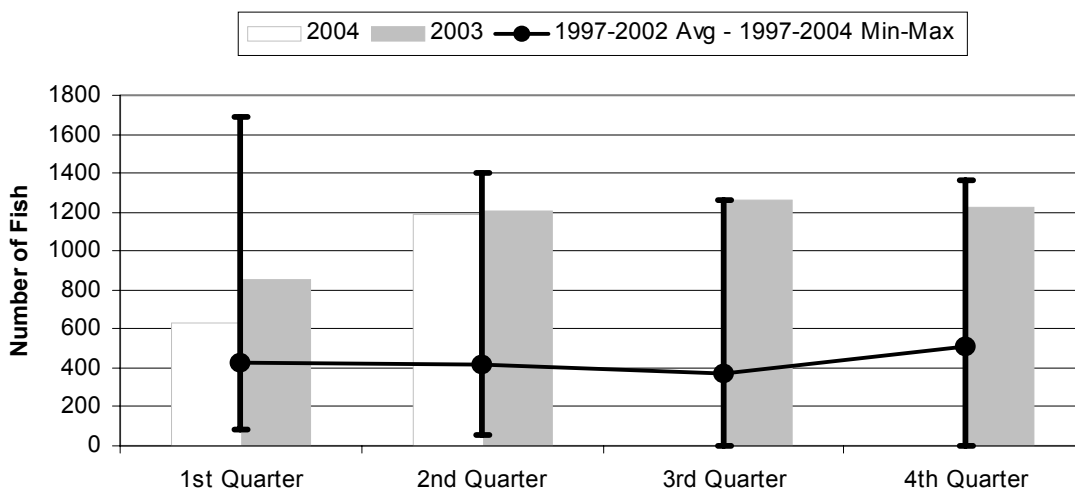
	1st Quarter	2nd Quarter	3rd Quarter	4th Quarter
2004	213	348	0	0
2003	1455	847	3076	886
1997-2004 Max	1455	979	5642	2297
1997-2002 Avg	161	384	1763	754
1997-2004 Min	30	59	0	0

Figure 10. American Samoa Wahoo Catch by Quarter for



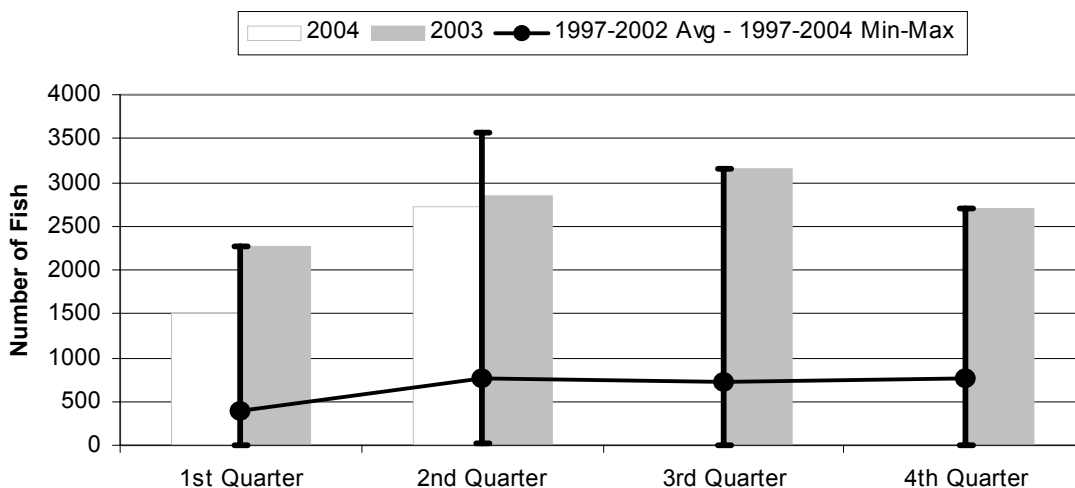
	1st Quarter	2nd Quarter	3rd Quarter	4th Quarter
2004	2008	2920	0	0
2003	3681	2865	4172	5333
1997-2004 Max	3681	2920	4365	5333
1997-2002 Avg	652	615	1165	1331
1997-2004 Min	27	20	0	0

Figure 11. American Samoa Billfish Catch by Quarter for



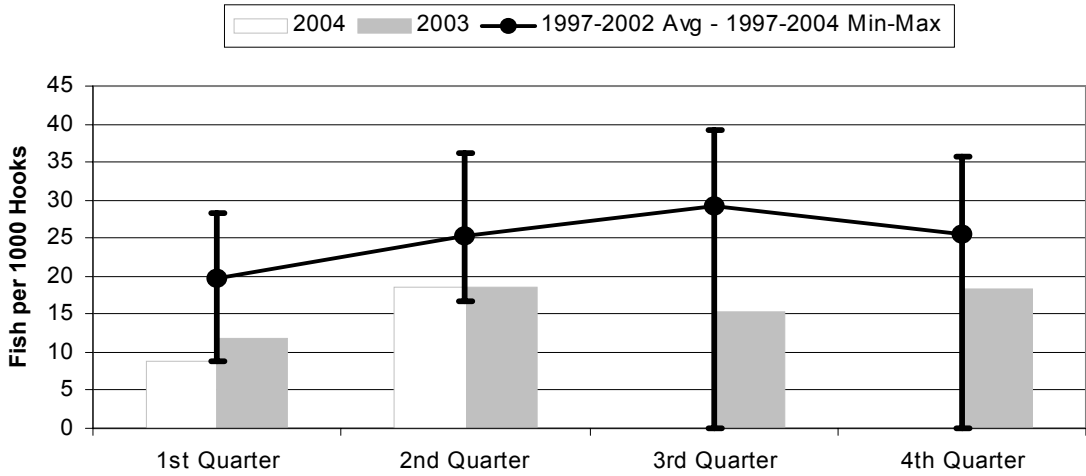
	1st Quarter	2nd Quarter	3rd Quarter	4th Quarter
2004	628	1186	0	0
2003	852	1207	1263	1221
1997-2004 Max	1692	1404	1263	1361
1997-2002 Avg	431	421	372	510
1997-2004 Min	83	58	0	0

Figure 12. American Samoa Shark Catch by Quarter for



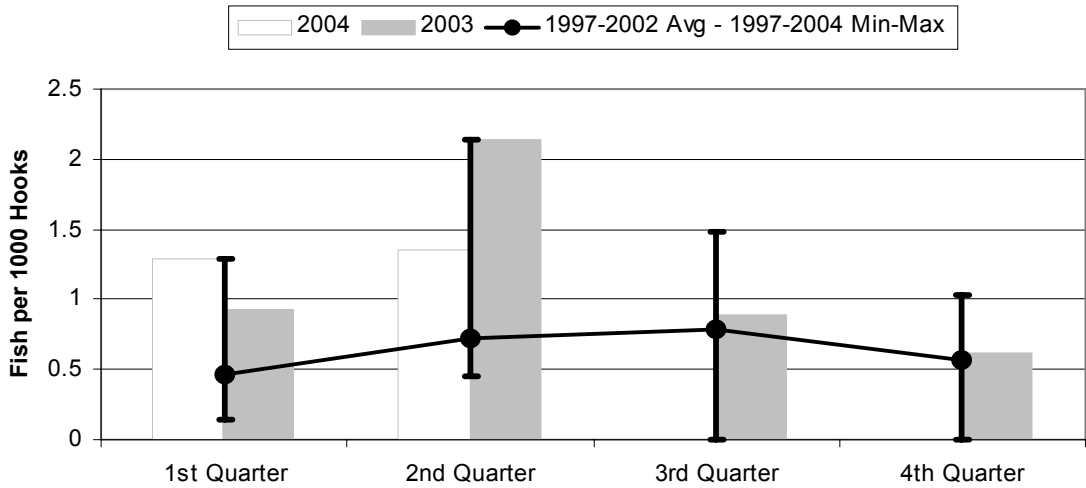
	1st Quarter	2nd Quarter	3rd Quarter	4th Quarter
2004	1500	2729	0	0
2003	2262	2855	3156	2695
1997-2004 Max	2262	3562	3156	2695
1997-2002 Avg	392	763	718	753
1997-2004 Min	5	15	0	0

Figure 13. American Samoa Longline Albacore Catch/1000 Hooks by Quarter for



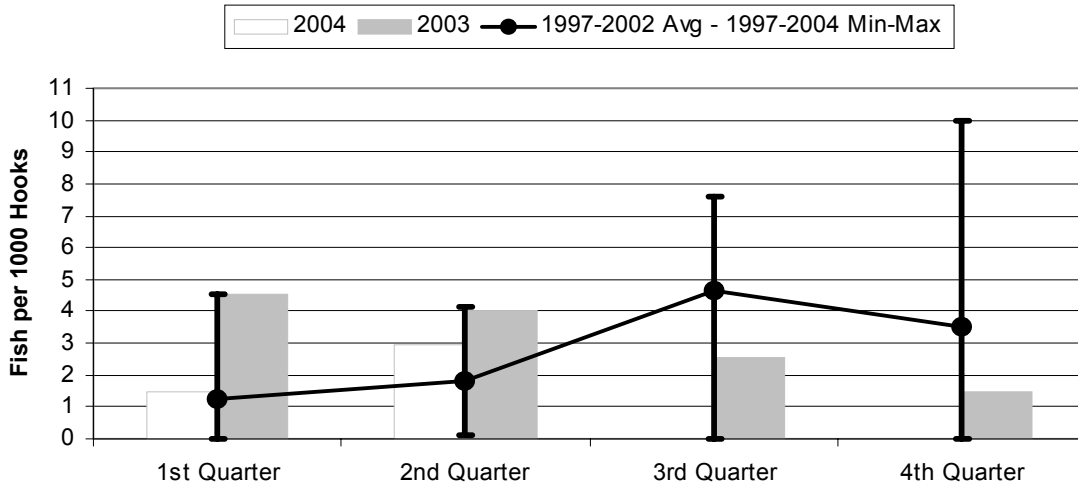
	1st Quarter	2nd Quarter	3rd Quarter	4th Quarter
2004	8.79	18.65	0.00	0.00
2003	11.72	18.56	15.22	18.24
1997-2004 Max	28.33	36.18	39.13	35.68
1997-2002 Avg	19.72	25.31	29.12	25.44
1997-2004 Min	8.79	16.80	0.00	0.00

Figure 14. American Samoa Longline Bigeye Tuna Catch/1000 Hooks by Quarter for



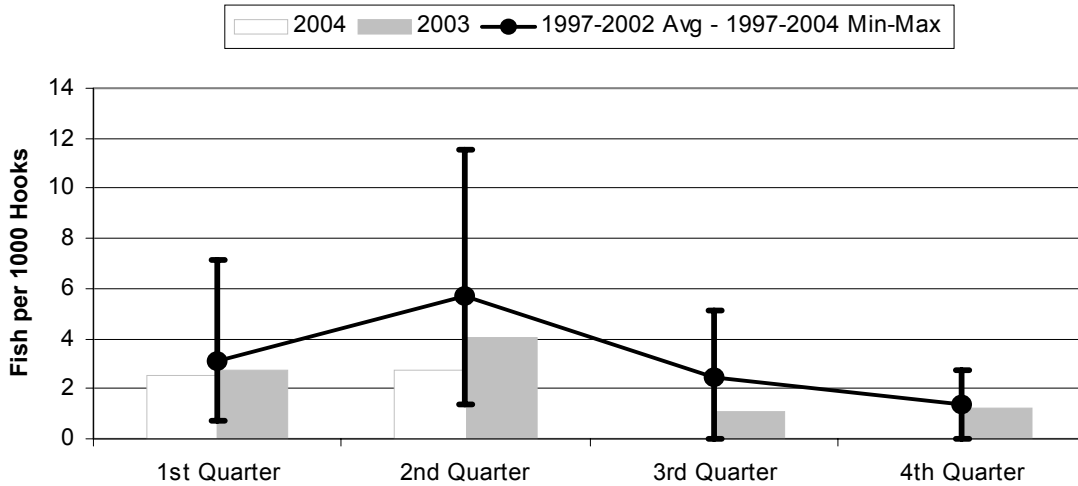
	1st Quarter	2nd Quarter	3rd Quarter	4th Quarter
2004	1.283	1.352	0.000	0.000
2003	0.926	2.145	0.887	0.618
1997-2004 Max	1.283	2.145	1.486	1.030
1997-2002 Avg	0.461	0.721	0.792	0.571
1997-2004 Min	0.146	0.452	0.000	0.000

Figure 15. American Samoa Longline Skipjack Tuna Catch/1000 Hooks by Quarter for



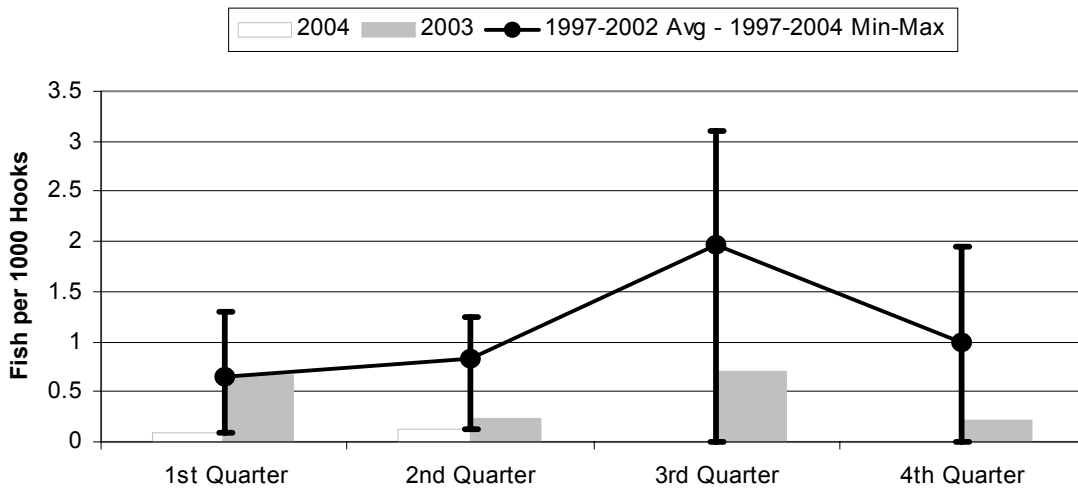
	1st Quarter	2nd Quarter	3rd Quarter	4th Quarter
2004	1.450	2.961	0.000	0.000
2003	4.556	4.025	2.557	1.485
1997-2004 Max	4.556	4.155	7.615	9.975
1997-2002 Avg	1.225	1.833	4.655	3.543
1997-2004 Min	0.000	0.119	0.000	0.000

Figure 16. American Samoa Yellowfin Tuna Catch/1000 Hooks by Quarter for



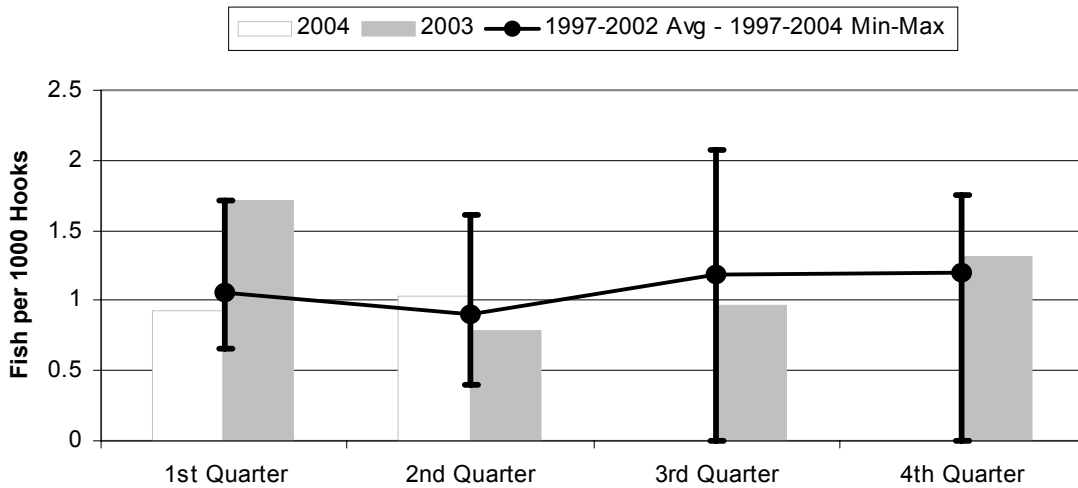
	1st Quarter	2nd Quarter	3rd Quarter	4th Quarter
2004	2.534	2.752	0.000	0.000
2003	2.716	4.046	1.108	1.256
1997-2004 Max	7.139	11.57	5.088	2.759
1997-2002 Avg	3.099	5.733	2.421	1.396
1997-2004 Min	0.695	1.394	0.000	0.000

Figure 17. American Samoa Longline Mahimahi Catch/1000 Hooks by Quarter for



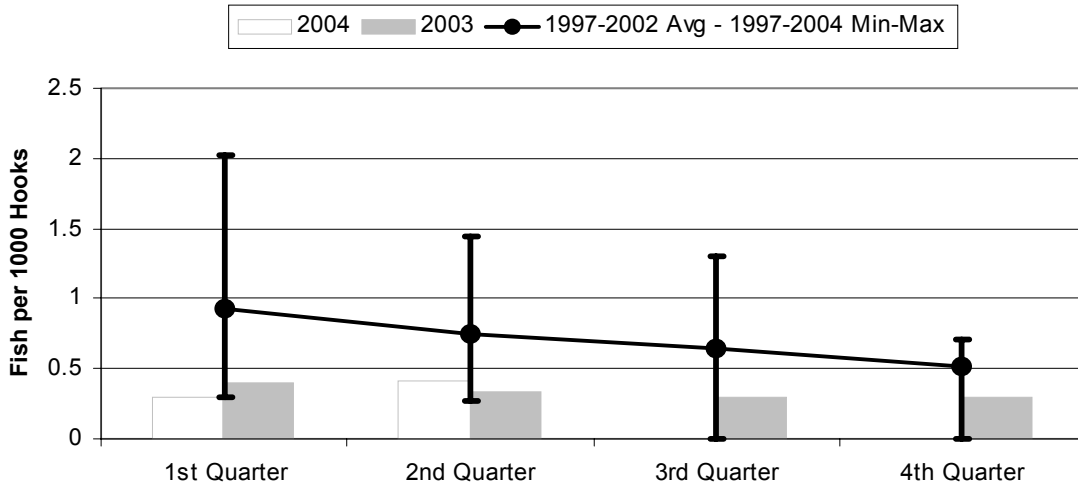
	1st Quarter	2nd Quarter	3rd Quarter	4th Quarter
2004	0.099	0.123	0.000	0.000
2003	0.676	0.233	0.708	0.219
1997-2004 Max	1.305	1.248	3.106	1.940
1997-2002 Avg	0.647	0.834	1.969	1.000
1997-2004 Min	0.091	0.123	0.000	0.000

Figure 18. American Samoa Wahoo Catch/1000 Hooks by Quarter for



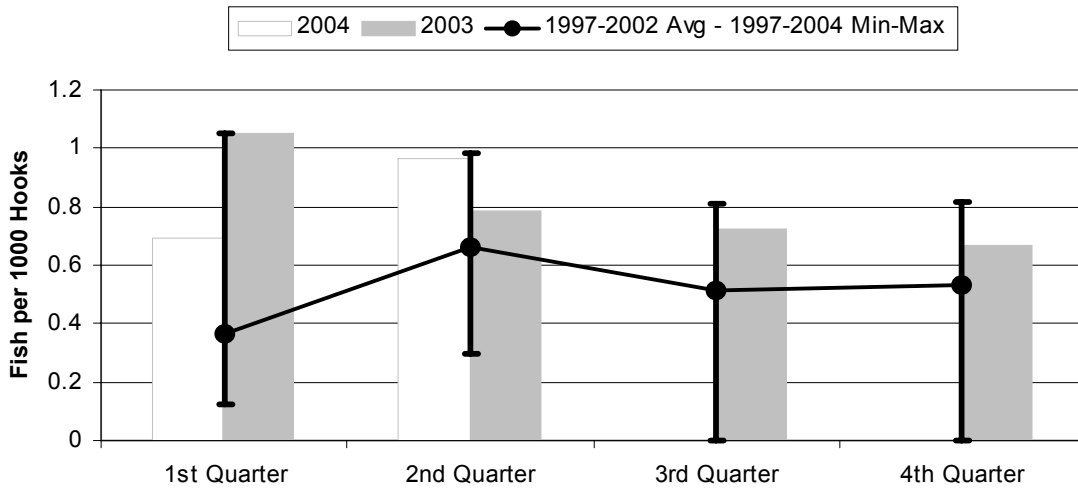
	1st Quarter	2nd Quarter	3rd Quarter	4th Quarter
2004	0.930	1.030	0.000	0.000
2003	1.710	0.790	0.961	1.319
1997-2004 Max	1.710	1.617	2.080	1.755
1997-2002 Avg	1.052	0.908	1.181	1.202
1997-2004 Min	0.657	0.396	0.000	0.000

Figure 19. American Samoa Billfish Catch/1000 Hooks by Quarter for



	1st Quarter	2nd Quarter	3rd Quarter	4th Quarter
2004	0.291	0.418	0.000	0.000
2003	0.396	0.333	0.291	0.302
1997-2004 Max	2.019	1.444	1.298	0.713
1997-2002 Avg	0.931	0.741	0.650	0.519
1997-2004 Min	0.291	0.268	0.000	0.000

Figure 20. American Samoa Shark Catch/1000 Hooks by Quarter for



	1st Quarter	2nd Quarter	3rd Quarter	4th Quarter
2004	0.695	0.962	0.000	0.000
2003	1.051	0.787	0.727	0.666
1997-2004 Max	1.051	0.986	0.810	0.819
1997-2002 Avg	0.364	0.660	0.515	0.532
1997-2004 Min	0.122	0.297	0.000	0.000