

Department of Marine & Wildlife Resources
Report on the NMFS Logbook Program for the
American Samoa Longline Fishery
April-June 2005

October 5, 2005

Logbook data in this report are summarized by date of haul as shown in the following table. All submitted logbook data for longline activities during the second quarter of 2005 have been processed and are reported in this preliminary report. As of October 5, 2005, the documented delinquency rate according to the DMWR Daily Effort Census and Delinquency Reporting System for the second quarter of 2005 was 0.31%. The summary data in this report are considered preliminary and subject to change as additional delinquent data are received and processed.

According to the Daily Effort Census, 29 vessels were engaged in longline fishing during the second quarter of 2005 and 29 of these vessels turned in some or all of their longline logs for sets made during the quarter. These 29 vessels made 956 sets and set 2,399,750 hooks. This quarter is almost identical to the second quarter of last year both in terms of the effort and the catch. The number of vessels participating this quarter is identical with the year ago quarter with the number of sets decreasing by 21% and the number of hooks set decreasing by 18%. The average number of hooks per set increased slightly from 2450 to 2510, reflecting the continuing trend of the alia fleet to not try to compete with the larger longline vessels. Many of the alia are no longer active or engaged in fishing at all and some of those that remain active have gone to bottomfishing. The demand and price/pound for bottomfish is higher in the local Samoan market than it is for pelagic fish and bottomfishing requires less fuel and other supplies and equipment.

The total catch for all species of 87,160 fish was up by 5.2% compared to the second quarter of last year. Albacore continued to dominate the catch with 54,901 fish caught in the second quarter of 2005. This is very close to 52,890 albacore caught in the second quarter of last year and almost 6 times the albacore catch during the first quarter of 2005 which was a very bad quarter for longline fishing in American Samoa. Catches of other species varied more when compared to the year ago quarter and most of them increased dramatically compared to the bad first quarter of 2005. Skipjack tuna catches increased by 53%, yellowfin tuna catches increased by 23% and mahimahi catches increased by 231% compared to the second quarter of 2004. On the other hand catches of bigeye tuna decreased by 35%, the catch of wahoo decreased by 31%, the catch of billfish decreased by 43% and the shark catch decreased by 17.5%.

Albacore CPUE increased to 3.38 times its value during the bad first quarter of 2005 and by 22% of its year ago value reflecting an almost identical catch with a correspondingly lower effort. The CPUE for all other species rose and fell with the catches for these species but more dramatically for the gainers and less dramatically for the losers. Skipjack tuna CPUE increased by 82%, yellowfin tuna CPUE increased by 46% and mahimahi CPUE increased by 291% compared to the second quarter of 2004. On the other hand the CPUE of bigeye tuna decreased by 23%, the CPUE of wahoo decreased by 19%, the CPUE of billfish decreased by 33% and the shark CPUE decreased by only 2.5%.

Western Pacific Logbook Summary Report for 2nd Quarter 2005

Vessels landing or based in American Samoa
Based on Date of Haul for all areas

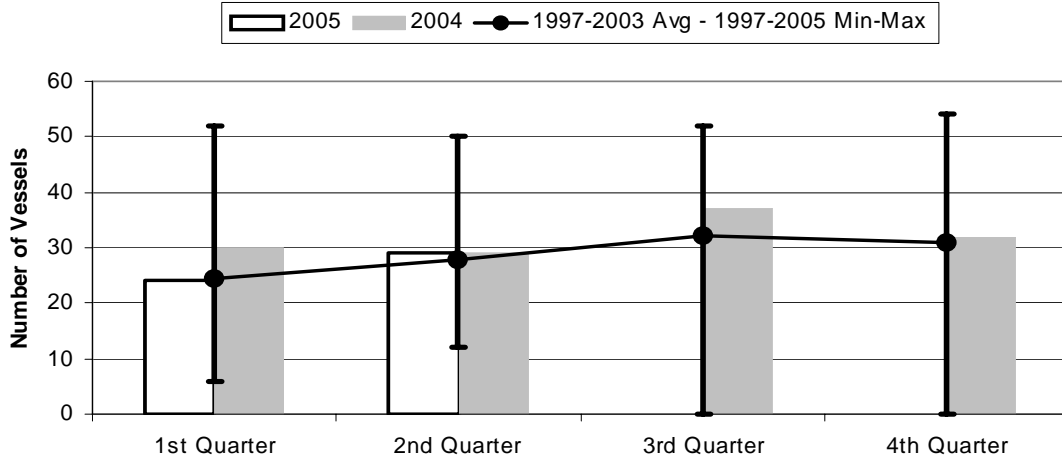
TRIP INFORMATION

Number of Vessels:	29
Number of Sets:	956
1000's of Hooks Set:	2400
Number of Lightsticks Used:	433

CATCH INFORMATION

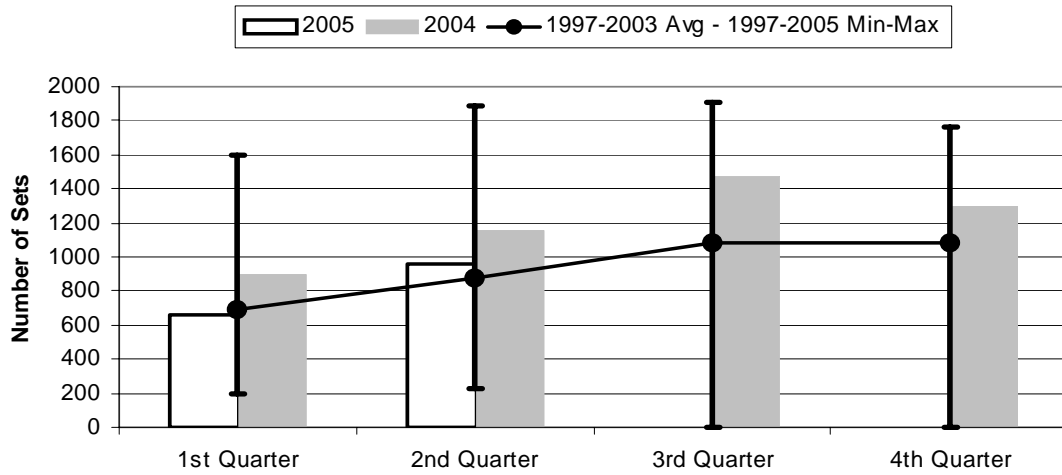
Species	# Caught	# Kept	# Finned	# Caught/ 1000 Hooks
BILLFISH				
Blue marlin	311	43		0.13
Striped Marlin	30	7		0.01
Sailfish	166	14		0.07
Spearfish	109	21		0.05
Swordfish	52	16		0.02
TOTALS	668	101		0.28
SHARKS				
Blue shark	1663	0		0.69
Mako Shark	83	0		0.03
Thresher Shark	53	0		0.02
White-Tip Shark	295	0		0.12
Other Pelagic Sharks	157	0		0.07
TOTALS	2251	0		0.94
TUNA				
Albacore	54901	54702		22.88
Bigeye Tuna	2489	2237		1.04
Bluefin Tuna	2	2		0.00
Skipjack Tuna	12930	9118		5.39
Yellowfin Tuna	9680	8529		4.03
TOTALS	80002	74588		33.34
OTHER PELAGICS				
Mahimahi	1154	637		0.48
Moonfish	195	26		0.08
Oilfish	574	7		0.24
Pomfret	297	137		0.12
Wahoo	2007	1827		0.84
TOTALS	4227	2634		1.76
NON-PMUS				
Other Pelagic Fish	14	5		0.01
TOTALS	14	5		0.01

Figure 1. American Samoa Longline Vessels Submitting Logs by Quarter for



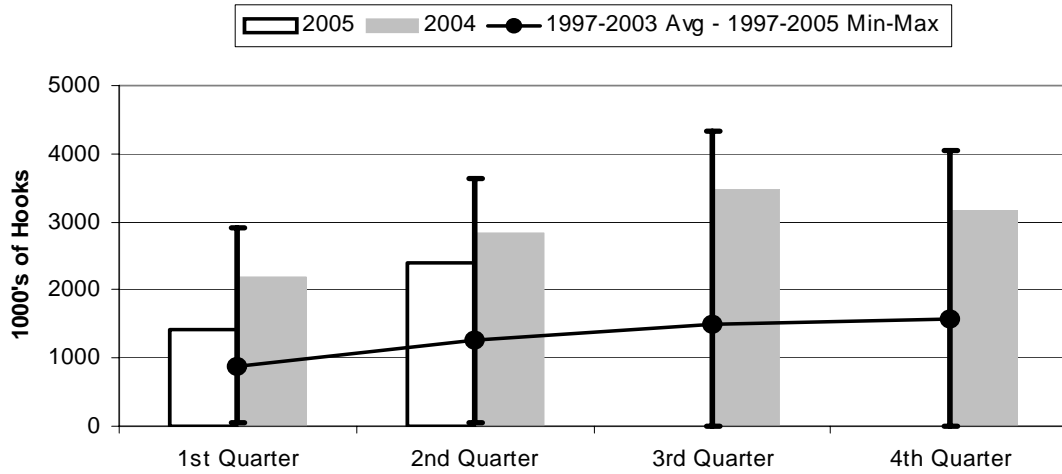
	1st Quarter	2nd Quarter	3rd Quarter	4th Quarter
2005	24	29	0	0
2004	30	29	37	32
1997-2005 Max	52	50	52	54
1997-2003 Avg	24.3	27.7	32.3	30.9
1997-2005 Min	6	12	0	0

Figure 2. Number of Sets by American Samoa Longline Vessels by Quarter for



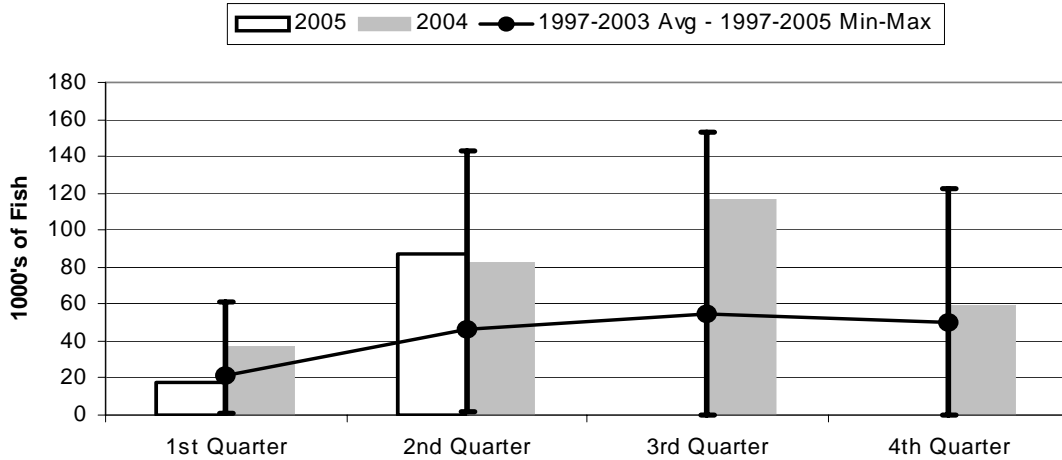
	1st Quarter	2nd Quarter	3rd Quarter	4th Quarter
2005	655	956	0	0
2004	894	1158	1474	1304
1997-2005 Max	1602	1886	1903	1758
1997-2003 Avg	689	878	1081	1083
1997-2005 Min	192	223	0	0

Figure 3. Number of Hooks Set by the American Samoa Longline Fleet by Quarter for



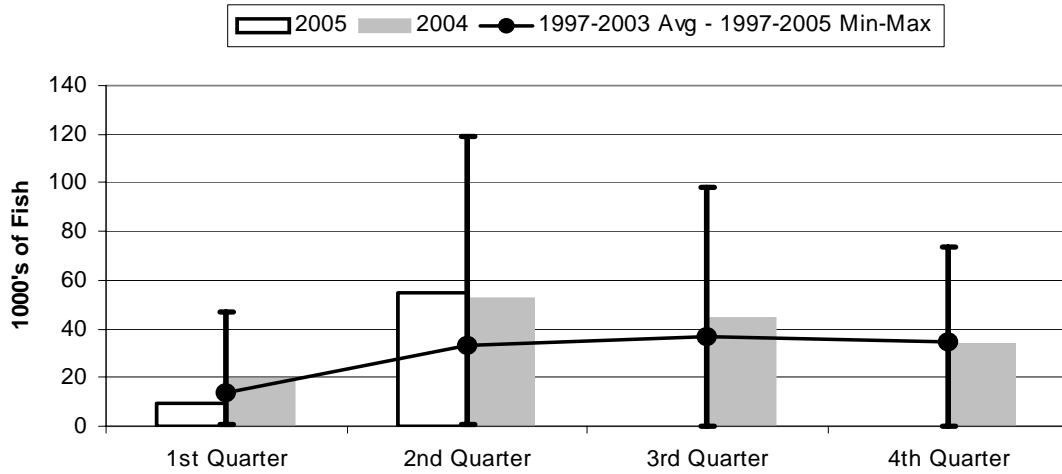
	1st Quarter	2nd Quarter	3rd Quarter	4th Quarter
2005	1430	2400	0	0
2004	2195	2837	3475	3179
1997-2005 Max	2902	3629	4342	4044
1997-2003 Avg	880	1266	1505	1564
1997-2005 Min	41	51	0	0

Figure 4. American Samoa Longline Total Catch (All Species) by Quarter for



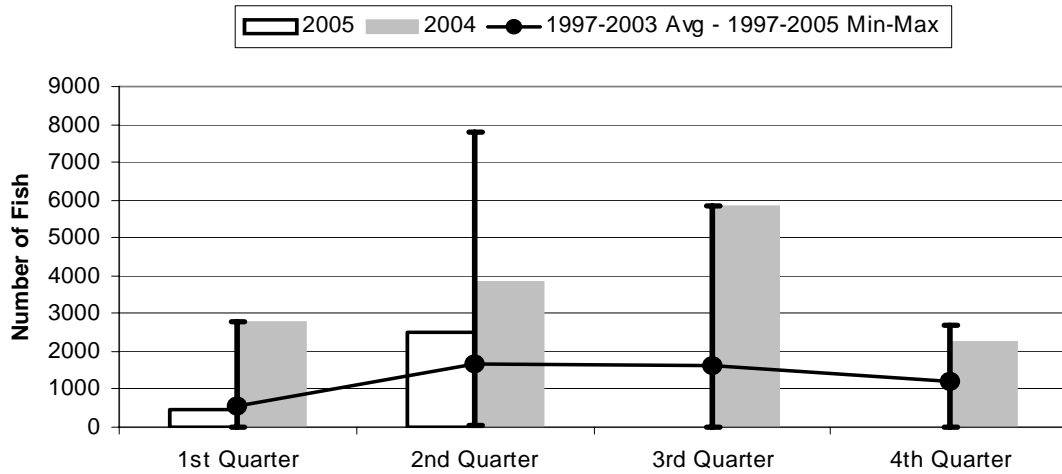
	1st Quarter	2nd Quarter	3rd Quarter	4th Quarter
2005	17.21	87.16	0.00	0.00
2004	36.74	82.81	116.57	59.32
1997-2005 Max	61.24	142.60	153.30	122.34
1997-2003 Avg	20.95	46.27	54.29	50.09
1997-2005 Min	1.32	1.42	0.00	0.00

Figure 5. American Samoa Longline Albacore Catch by Quarter for



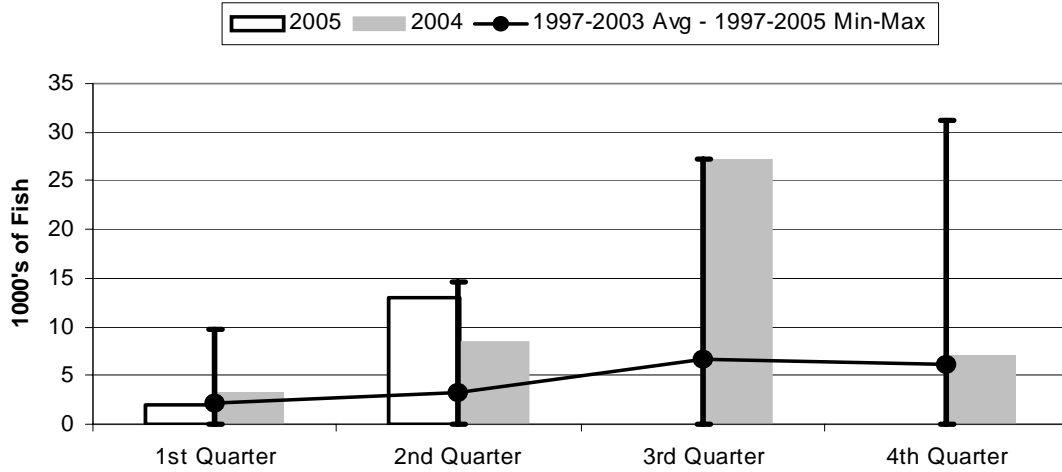
	1st Quarter	2nd Quarter	3rd Quarter	4th Quarter
2005	9.42	54.90	0.00	0.00
2004	19.17	52.89	45.03	33.57
1997-2005 Max	46.98	118.99	98.09	73.77
1997-2003 Avg	13.73	33.51	36.91	34.98
1997-2005 Min	0.94	0.85	0.00	0.00

Figure 6. American Samoa Longline Bigeye Tuna Catch by Quarter for



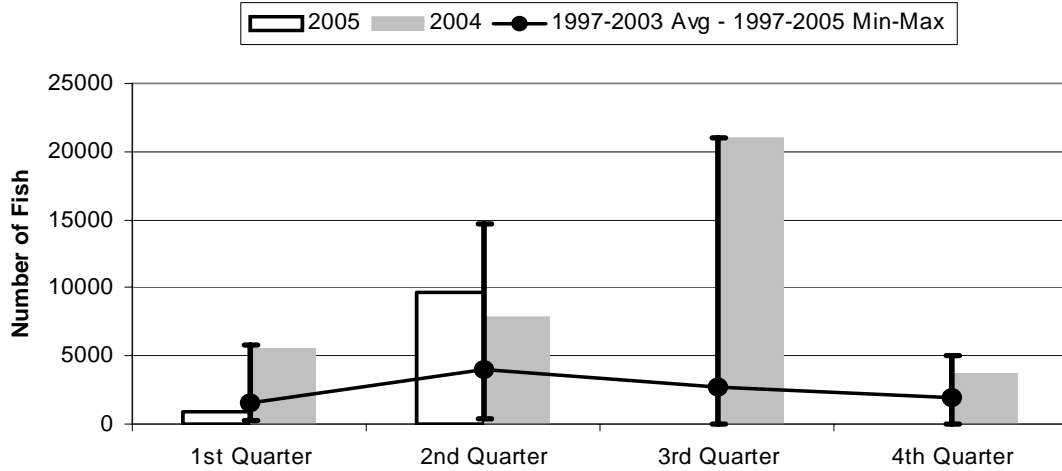
	1st Quarter	2nd Quarter	3rd Quarter	4th Quarter
2005	461	2489	0	0
2004	2781	3833	5834	2273
1997-2005 Max	2781	7785	5834	2678
1997-2003 Avg	541	1692	1609	1186
1997-2005 Min	6	26	0	0

Figure 7. American Samoa Longline Skipjack Tuna Catch by Quarter for



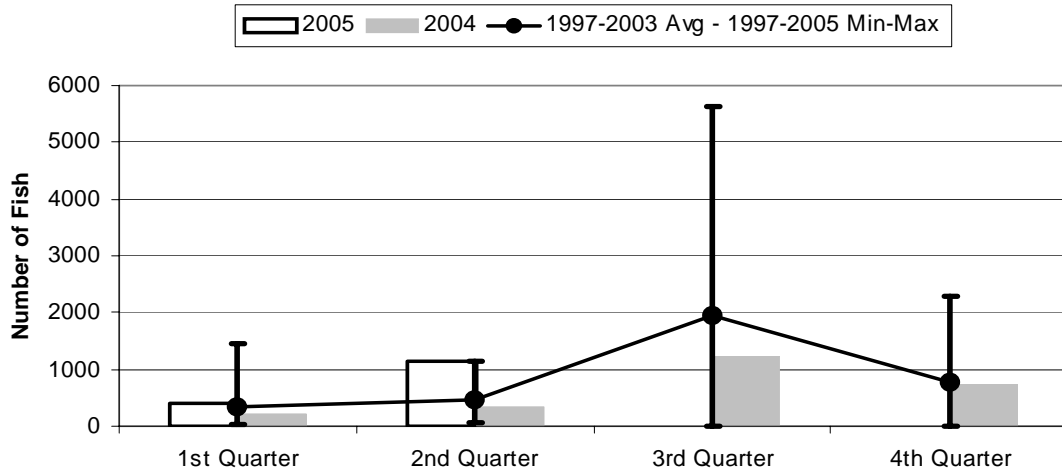
	1st Quarter	2nd Quarter	3rd Quarter	4th Quarter
2005	2.06	12.93	0.00	0.00
2004	3.16	8.40	27.23	7.11
1997-2005 Max	9.81	14.61	27.23	31.19
1997-2003 Avg	2.08	3.28	6.76	6.20
1997-2005 Min	0.00	0.01	0.00	0.00

Figure 8. American Samoa Longline Yellowfin Tuna Catch by Quarter for



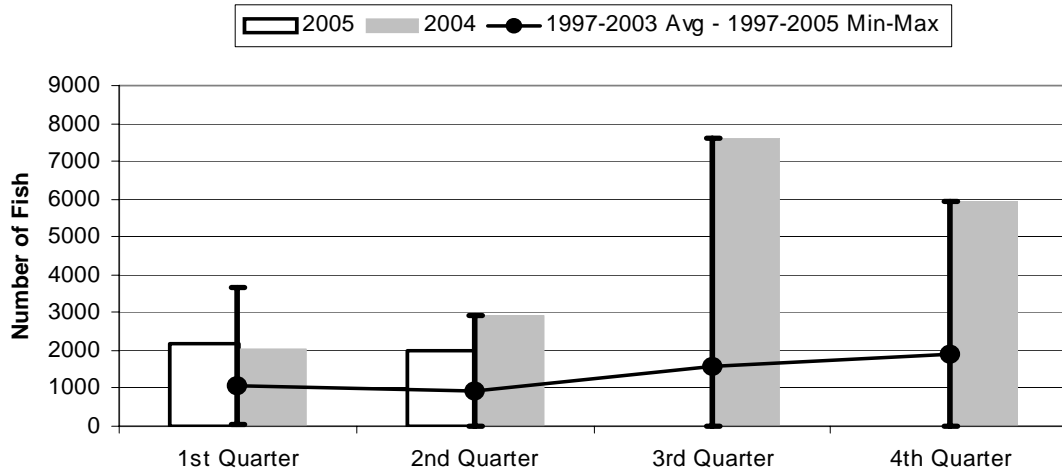
	1st Quarter	2nd Quarter	3rd Quarter	4th Quarter
2005	951	9680	0	0
2004	5491	7812	20993	3771
1997-2003 Avg	1602	4010	2732	1950
1997-2005 Max	5848	14681	20993	5078
1997-2005 Min	213	356	0	0

Figure 9. American Samoa Mahimahi Catch by Quarter for



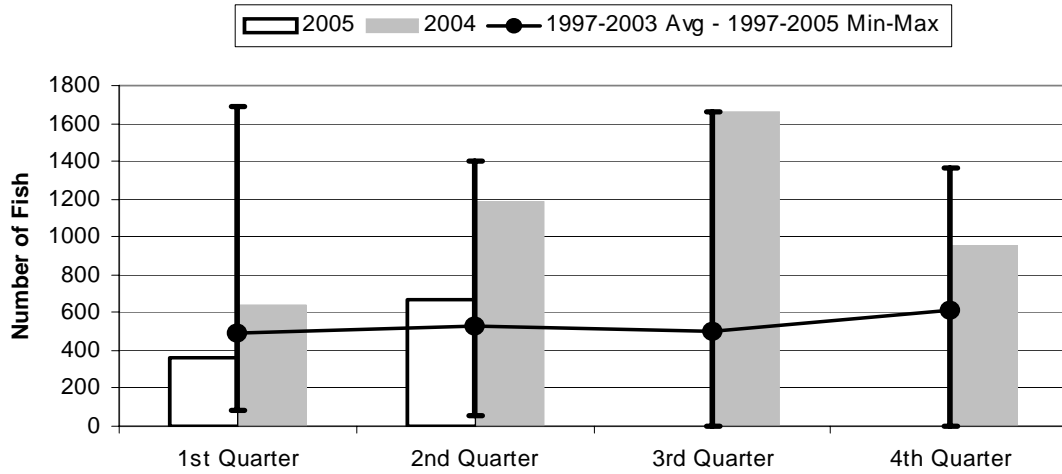
	1st Quarter	2nd Quarter	3rd Quarter	4th Quarter
2005	409	1154	0	0
2004	214	348	1240	751
1997-2005 Max	1455	1154	5642	2297
1997-2003 Avg	346	450	1951	772
1997-2005 Min	30	59	0	0

Figure 10. American Samoa Wahoo Catch by Quarter for



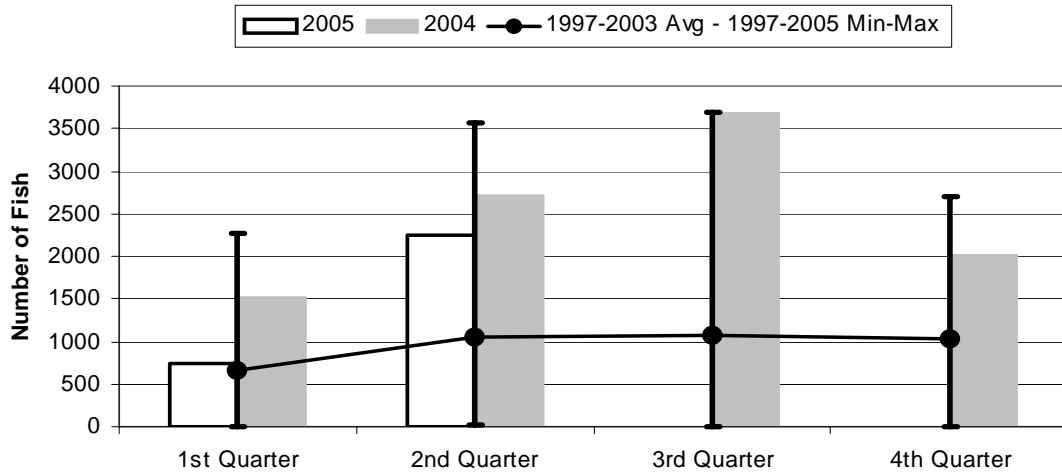
	1st Quarter	2nd Quarter	3rd Quarter	4th Quarter
2005	2158	2007	0	0
2004	2024	2921	7629	5918
1997-2005 Max	3681	2921	7629	5918
1997-2003 Avg	1084	935	1594	1903
1997-2005 Min	27	20	0	0

Figure 11. American Samoa Billfish Catch by Quarter for



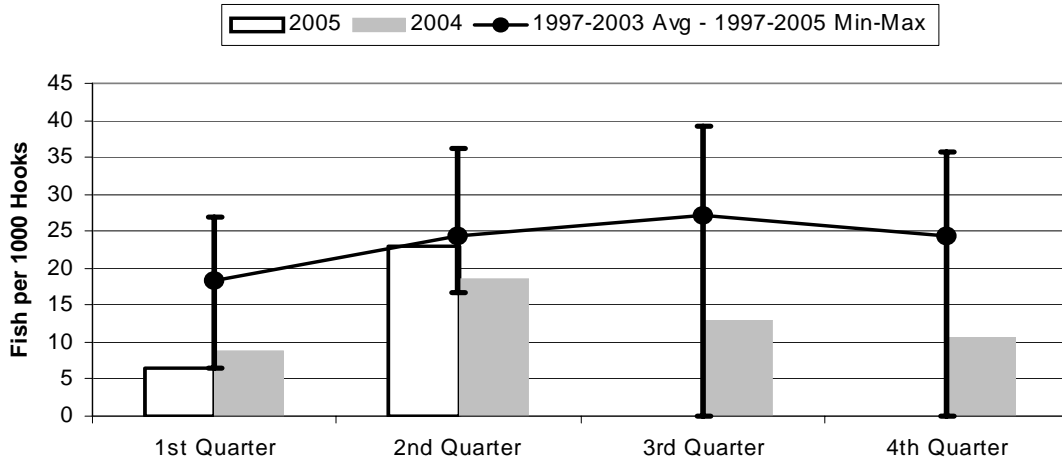
	1st Quarter	2nd Quarter	3rd Quarter	4th Quarter
2005	360	668	0	0
2004	636	1186	1663	959
1997-2005 Max	1692	1404	1663	1361
1997-2003 Avg	491	533	500	612
1997-2005 Min	83	58	0	0

Figure 12. American Samoa Shark Catch by Quarter for



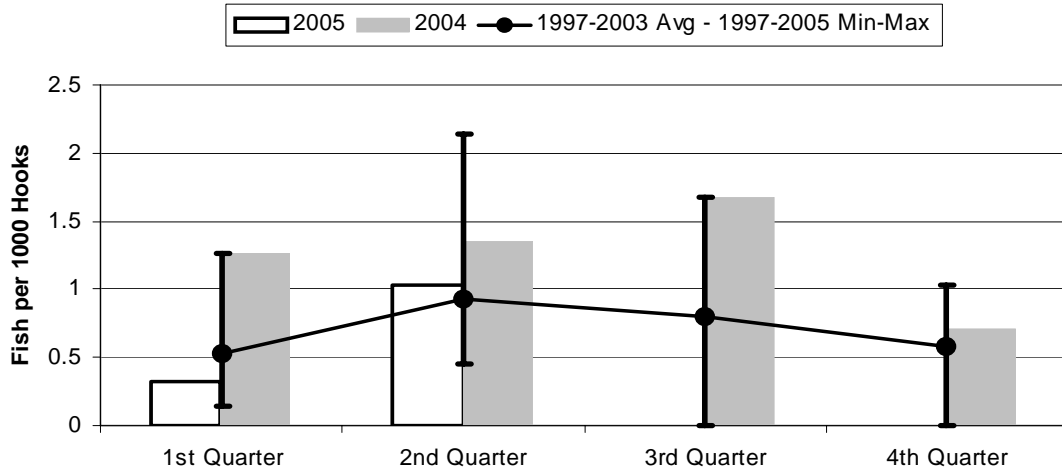
	1st Quarter	2nd Quarter	3rd Quarter	4th Quarter
2005	747	2251	0	0
2004	1522	2729	3686	2017
1997-2005 Max	2262	3562	3686	2695
1997-2003 Avg	659	1062	1066	1029
1997-2005 Min	5	16	0	0

Figure 13. American Samoa Longline Albacore Catch/1000 Hooks by Quarter for



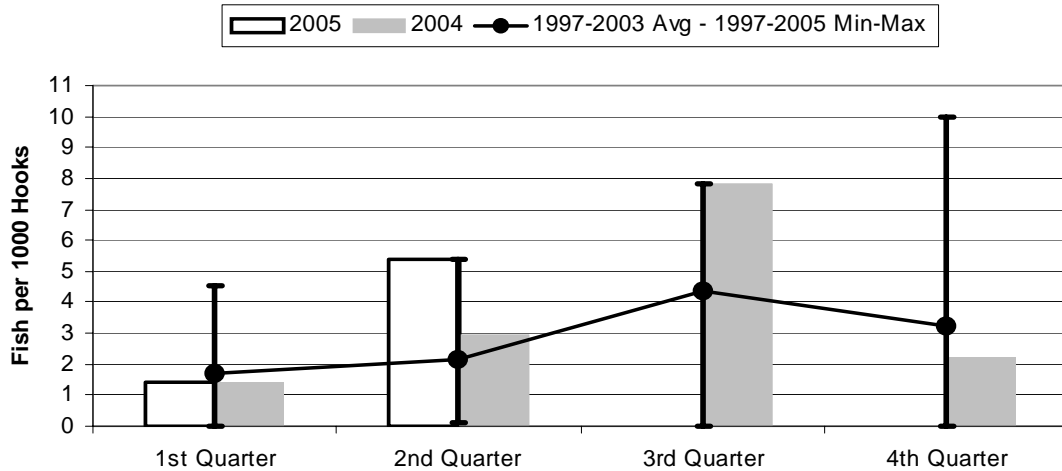
	1st Quarter	2nd Quarter	3rd Quarter	4th Quarter
2005	6.59	22.88	0.00	0.00
2004	8.73	18.64	12.96	10.56
1997-2005 Max	27.01	36.18	39.13	35.75
1997-2003 Avg	18.38	24.34	27.14	24.42
1997-2005 Min	6.59	16.77	0.00	0.00

Figure 14. American Samoa Longline Bigeye Tuna Catch/1000 Hooks by Quarter for



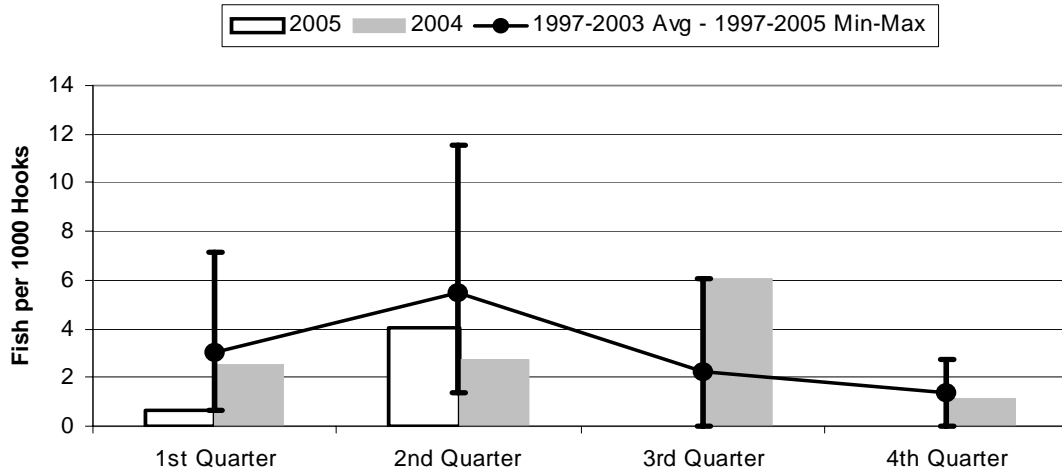
	1st Quarter	2nd Quarter	3rd Quarter	4th Quarter
2005	0.323	1.037	0.000	0.000
2004	1.267	1.351	1.679	0.715
1997-2005 Max	1.267	2.145	1.679	1.030
1997-2003 Avg	0.527	0.929	0.805	0.578
1997-2005 Min	0.146	0.452	0.000	0.000

Figure 15. American Samoa Longline Skipjack Tuna Catch/1000 Hooks by Quarter for



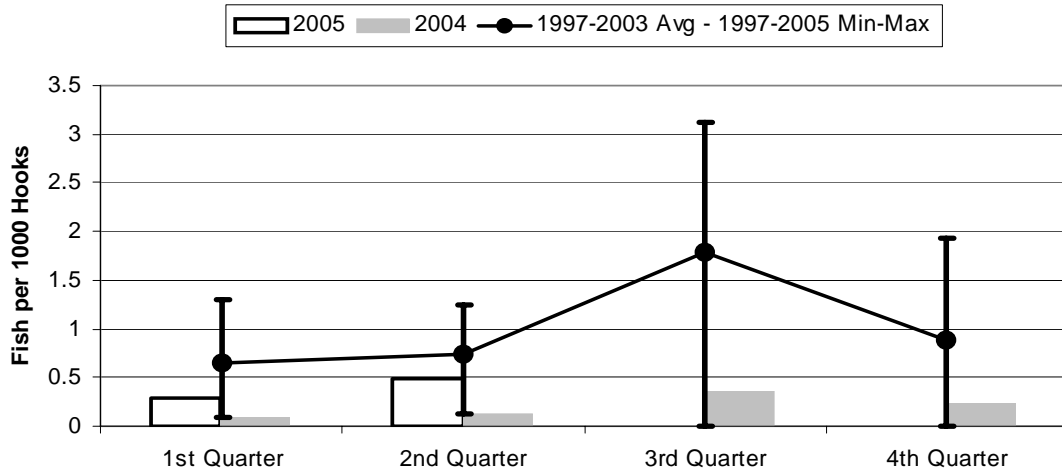
	1st Quarter	2nd Quarter	3rd Quarter	4th Quarter
2005	1.444	5.388	0.000	0.000
2004	1.440	2.960	7.838	2.237
1997-2005 Max	4.556	5.388	7.838	9.975
1997-2003 Avg	1.700	2.145	4.353	3.249
1997-2005 Min	0.000	0.118	0.000	0.000

Figure 16. American Samoa Yellowfin Tuna Catch/1000 Hooks by Quarter for



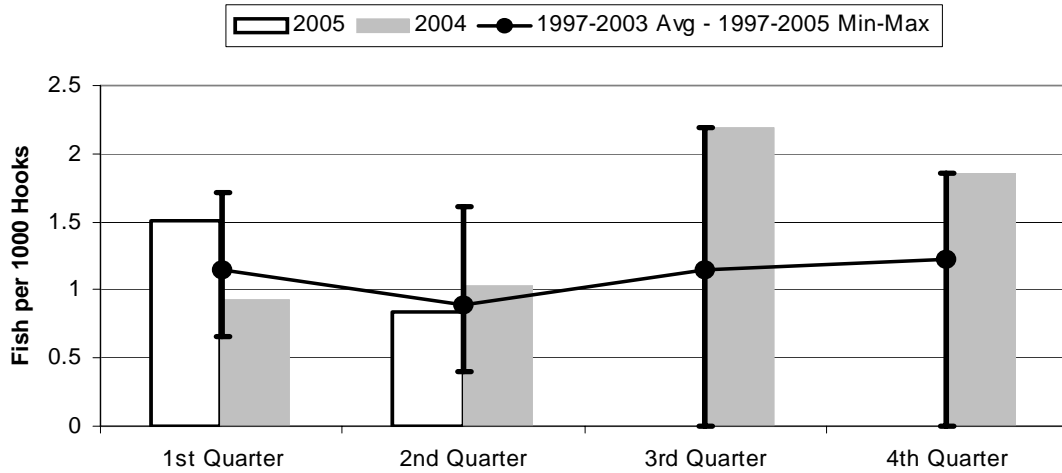
	1st Quarter	2nd Quarter	3rd Quarter	4th Quarter
2005	0.665	4.034	0.000	0.000
2004	2.502	2.754	6.042	1.186
1997-2003 Avg	3.041	5.479	2.233	1.377
1997-2005 Max	7.120	11.51	6.042	2.757
1997-2005 Min	0.665	1.395	0.000	0.000

Figure 17. American Samoa Longline Mahimahi Catch/1000 Hooks by Quarter for



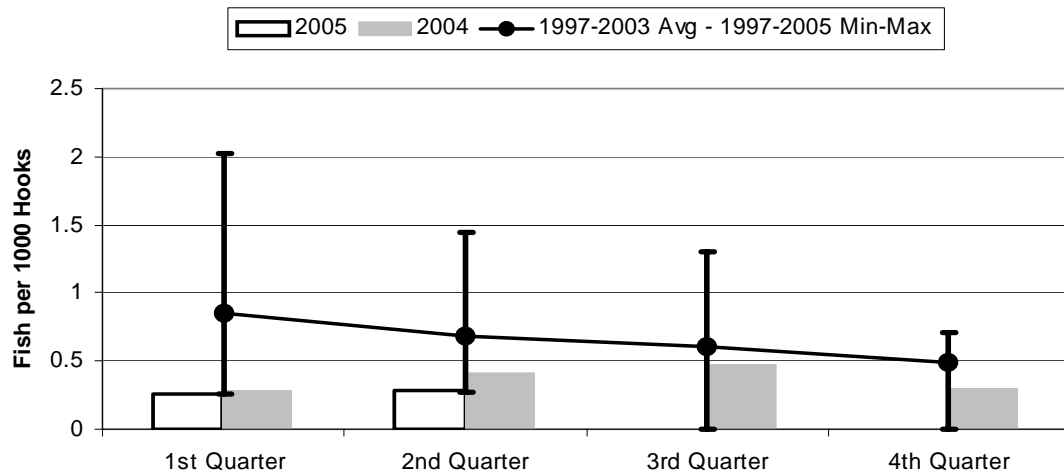
	1st Quarter	2nd Quarter	3rd Quarter	4th Quarter
2005	0.286	0.481	0.000	0.000
2004	0.098	0.123	0.357	0.236
1997-2005 Max	1.304	1.248	3.125	1.932
1997-2003 Avg	0.650	0.748	1.790	0.887
1997-2005 Min	0.091	0.123	0.000	0.000

Figure 18. American Samoa Wahoo Catch/1000 Hooks by Quarter for



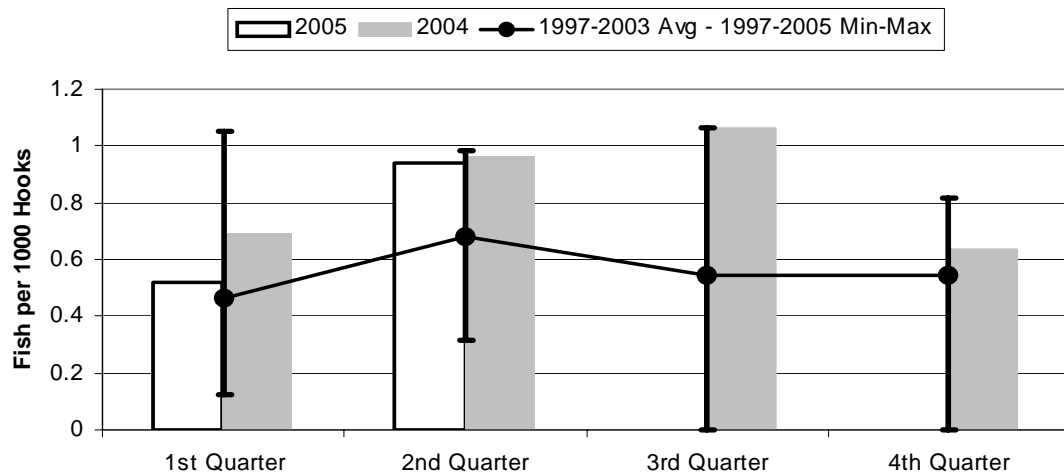
	1st Quarter	2nd Quarter	3rd Quarter	4th Quarter
2005	1.510	0.836	0.000	0.000
2004	0.922	1.030	2.196	1.861
1997-2005 Max	1.710	1.617	2.196	1.861
1997-2003 Avg	1.146	0.885	1.149	1.218
1997-2005 Min	0.657	0.394	0.000	0.000

Figure 19. American Samoa Billfish Catch/1000 Hooks by Quarter for



	1st Quarter	2nd Quarter	3rd Quarter	4th Quarter
2005	0.252	0.278	0.000	0.000
2004	0.290	0.418	0.479	0.302
1997-2005 Max	2.019	1.439	1.306	0.712
1997-2003 Avg	0.854	0.682	0.600	0.488
1997-2005 Min	0.252	0.268	0.000	0.000

Figure 20. American Samoa Shark Catch/1000 Hooks by Quarter for



	1st Quarter	2nd Quarter	3rd Quarter	4th Quarter
2005	0.523	0.938	0.000	0.000
2004	0.694	0.962	1.061	0.635
1997-2005 Max	1.051	0.986	1.061	0.819
1997-2003 Avg	0.462	0.681	0.545	0.545
1997-2005 Min	0.122	0.315	0.000	0.000