

American Samoa Longline Fishery Logbook Summary Report July-September 2005

May 15, 2006

The Federal longline logbook data in this report were compiled by the Pacific Islands Fisheries Science Center with significant support from American Samoa's Department of Marine and Wildlife Resources (DMWR). The data are summarized by date of haul as shown in the following table. All submitted logbook data for longline activities during the third quarter of 2005 have been processed and are reported in this preliminary report. As of May 15, 2006, the documented delinquency rate according to the DMWR Daily Effort Census and Delinquency Reporting System for the third quarter of 2005 was 1.36%. The summary data in this report are considered preliminary and subject to change as additional delinquent data are received and processed.

According to the Daily Effort Census, 33 vessels were engaged in longline fishing during the third quarter of 2005 and 33 of these vessels turned in some or all of their longline logs for sets made during the quarter. These 33 vessels made 1,383 sets and deployed 3,605,380 hooks. The effort in this quarter is nearly the same as the effort recorded in the third quarter of last year but the catch is lower. The number of vessels participating this quarter is 10.8% less than the third quarter last year and the number of sets is 6.2% less. The number of hooks deployed, however, increased by 3.7%. The average number of hooks per set increased from 2,357 to 2,606, reflecting the continuing trend of smaller American Samoa longline vessels (the *alia* fleet) to not try to compete with the larger longline vessels and with a trend toward larger longline vessels setting more hooks. Many of the *alias* are no longer active or engaged in fishing at all and those that remain active have switched from longlining to bottomfishing. The demand and price/pound for bottomfish are higher than for pelagic fish in the local Samoan market and bottomfishing requires less fuel and other supplies and equipment.

The total catch for all species was 88,711 fish, down by 31.4% compared to the third quarter of last year and more than 5 times the catch of the slow first quarter of 2002. Albacore continued to dominate the catch with 54,456 fish caught in the third quarter of 2005. This is a 21% increase compared to the 45,030 albacore caught in the third quarter of last year and almost 6 times the albacore catch during the first quarter of 2005, which was a poor quarter for longline fishing in American Samoa. Catches of other species decreased dramatically when compared to the third quarter of last year, except for catches of mahimahi which increased by 46%. This indicates a targeting of mahimahi and albacore at the expense of other species. Catches of skipjack tuna decreased to only 21% of the skipjack catch in the third quarter last year, whereas catches of bigeye tuna and yellowfin tuna decreased by 36% and 38%, respectively. Likewise, the catch of wahoo decreased by 30%, the catch of billfish decreased by 42%, and the catch of sharks decreased by 36%.

Albacore catch per unit of effort (CPUE) increased to 2.3 times its value during the slow first quarter of 2005 and by 16% over its value a year ago. The CPUE for all other species except mahimahi decreased along with the catches for these species: skipjack tuna (decreased by 79%), bigeye tuna (35%), yellowfin tuna (40%), wahoo (32%), billfish (49%), and sharks (38%). The mahimahi CPUE was 41% greater than in the third quarter last year.

Western Pacific Logbook Summary Report for 3rd Quarter 2005

Vessels landing or based in American Samoa
Based on Date of Haul for all areas

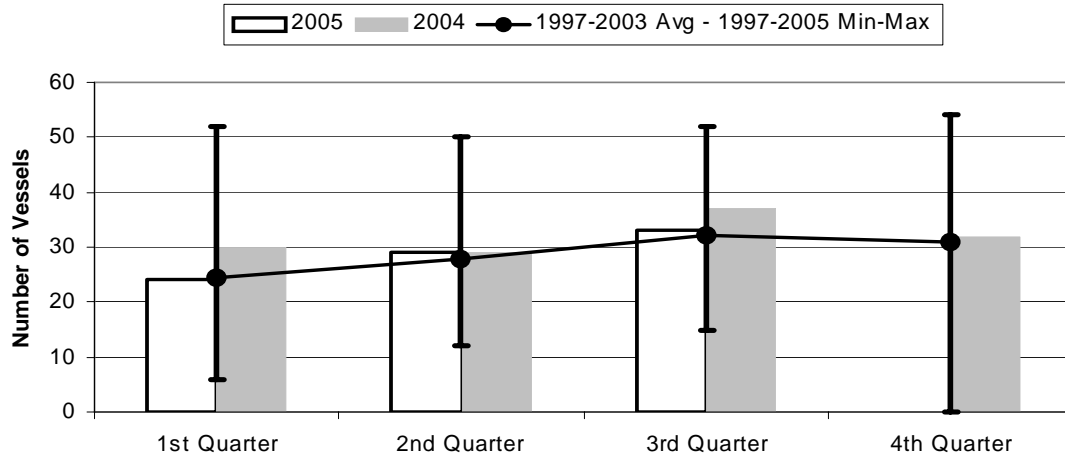
TRIP INFORMATION

Number of Vessels:	33
Number of Sets:	1383
1000's of Hooks Set:	3605
Number of Lightsticks Used:	953

CATCH INFORMATION

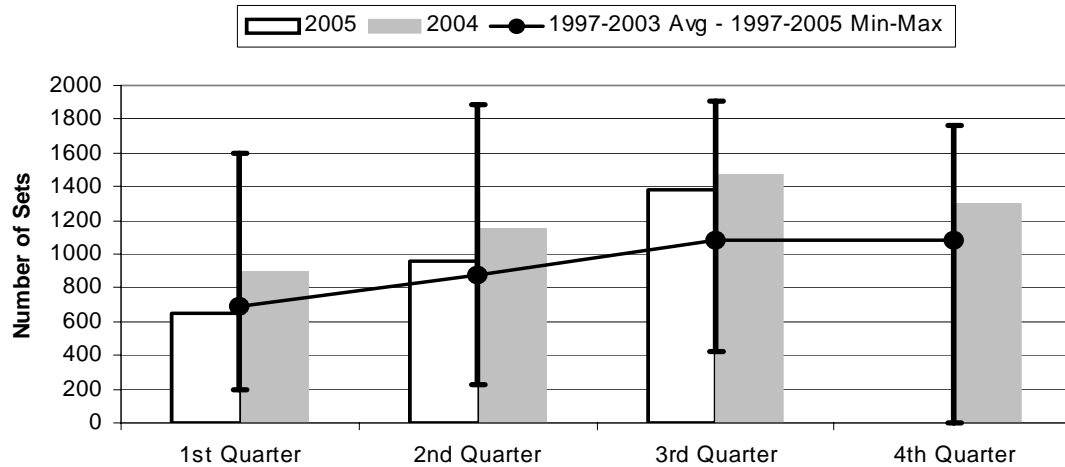
Species	# Caught	# Kept	# Finned	# Caught/ 1000 Hooks
BILLFISH				
Blue marlin	462	42		0.13
Striped Marlin	82	18		0.02
Sailfish	209	25		0.06
Spearfish	153	40		0.04
Swordfish	52	28		0.01
TOTALS	958	153		0.27
SHARKS				
Blue shark	1823	2	2	0.51
Shortfin Mako Shark	93	0		0.03
Thresher Shark	79	0		0.02
White Tip Oceanic Shark	347	0		0.10
Other Pelagic Sharks	24	0		0.01
TOTALS	2366	2	2	0.66
TUNA				
Albacore	54456	54437		15.10
Bigeye Tuna	3742	3710		1.04
Bluefin Tuna	3	1		0.00
Skipjack Tuna	5642	5421		1.56
Yellowfin Tuna	12944	12938		3.59
TOTALS	76787	76507		21.30
OTHER PELAGICS				
Mahimahi	1813	1559		0.50
Moonfish	241	49		0.07
Oilfish	990	17		0.27
Pomfret	208	29		0.06
Wahoo	5341	5216		1.48
TOTALS	8593	6870		2.38
NON-PMUS				
Other Pelagic Fish	7	7		0.00
TOTALS	7	7		0.00

Figure 1. American Samoa Longline Vessels Submitting Logs by Quarter



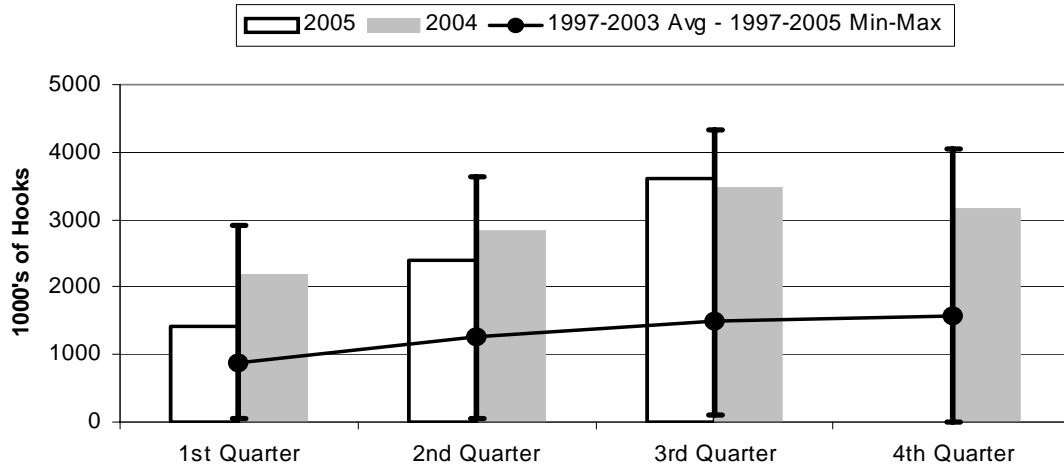
	1st Quarter	2nd Quarter	3rd Quarter	4th Quarter
2005	24	29	33	0
2004	30	29	37	32
1997-2005 Max	52	50	52	54
1997-2003 Avg	24.3	27.7	32.3	30.9
1997-2005 Min	6	12	15	0

Figure 2. Number of Sets by American Samoa Longline Vessels by Quarter



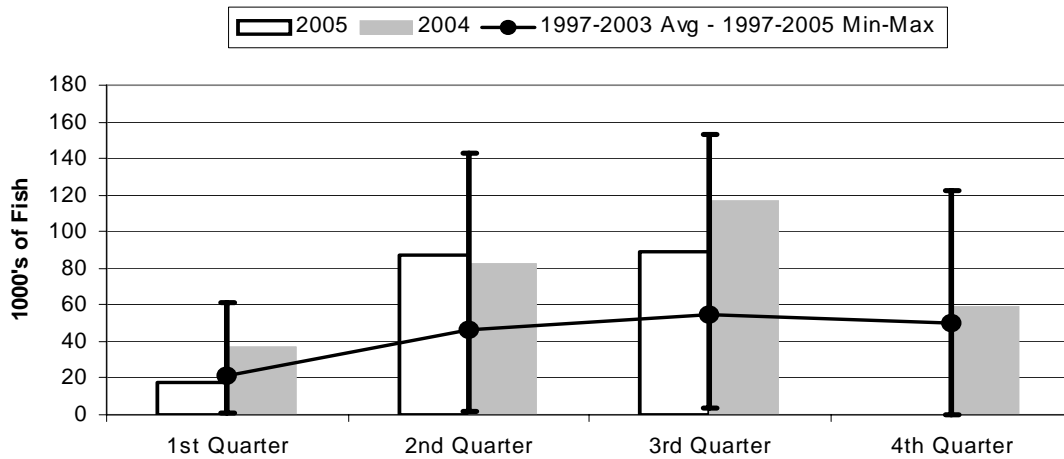
	1st Quarter	2nd Quarter	3rd Quarter	4th Quarter
2005	654	956	1383	0
2004	894	1158	1474	1304
1997-2005 Max	1602	1886	1903	1758
1997-2003 Avg	689	878	1081	1083
1997-2005 Min	192	223	424	0

Figure 3. Number of Hooks Set by the American Samoa Longline Fleet by Quarter



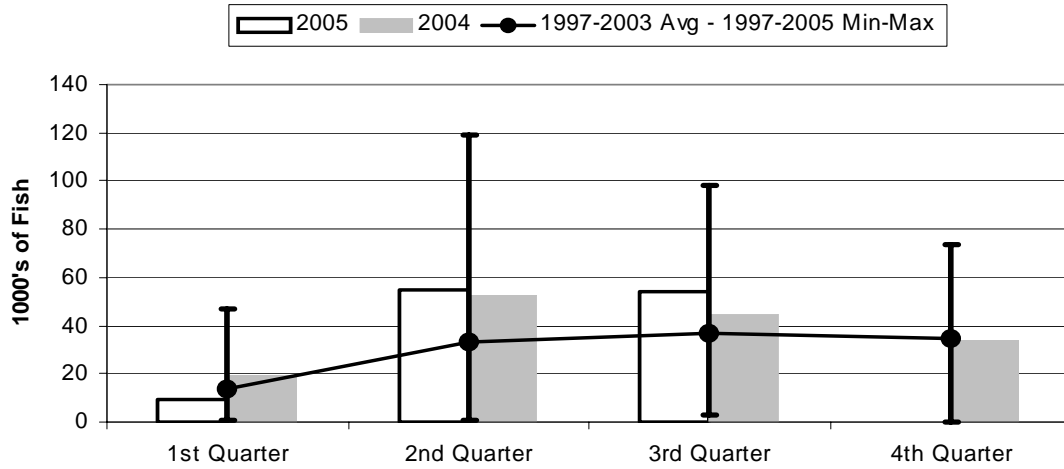
	1st Quarter	2nd Quarter	3rd Quarter	4th Quarter
2005	1429	2400	3605	0
2004	2195	2837	3475	3179
1997-2005 Max	2902	3629	4338	4044
1997-2003 Avg	880	1266	1504	1564
1997-2005 Min	41	51	101	0

Figure 4. American Samoa Longline Total Catch (All Species) by Quarter



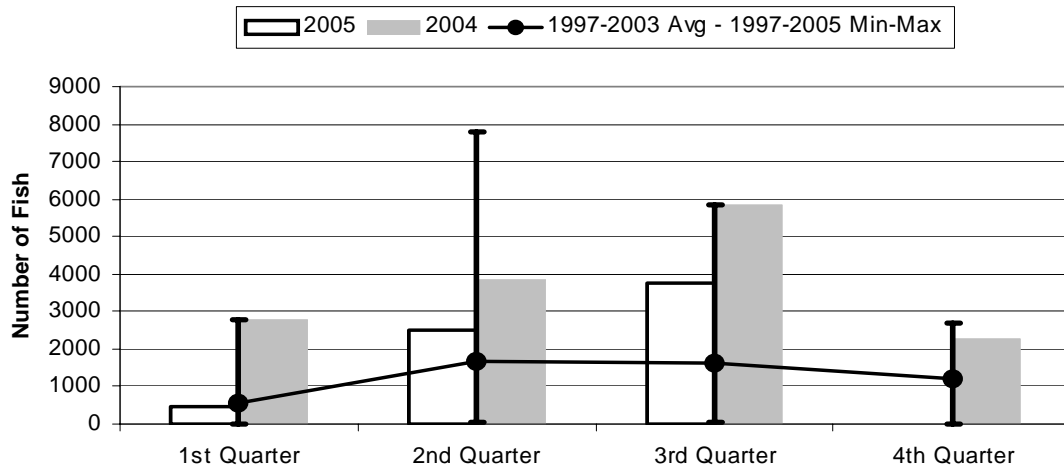
	1st Quarter	2nd Quarter	3rd Quarter	4th Quarter
2005	17.21	87.16	88.71	0.00
2004	36.74	82.81	116.57	59.32
1997-2005 Max	61.24	142.60	153.30	122.34
1997-2003 Avg	20.95	46.27	54.29	50.09
1997-2005 Min	1.32	1.42	4.13	0.00

Figure 5. American Samoa Longline Albacore Catch by Quarter



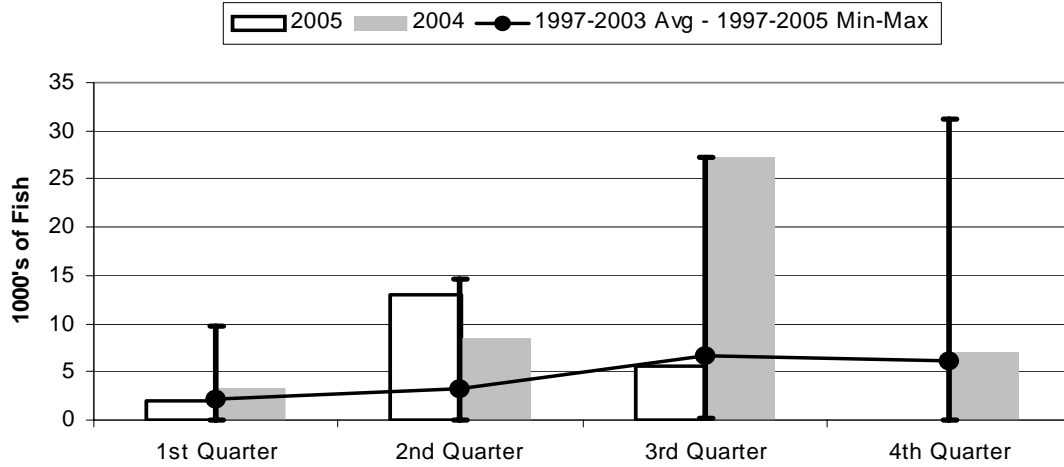
	1st Quarter	2nd Quarter	3rd Quarter	4th Quarter
2005	9.42	54.90	54.46	0.00
2004	19.17	52.89	45.03	33.57
1997-2005 Max	46.98	118.99	98.09	73.77
1997-2003 Avg	13.73	33.51	36.91	34.98
1997-2005 Min	0.94	0.85	3.18	0.00

Figure 6. American Samoa Longline Bigeye Tuna Catch by Quarter



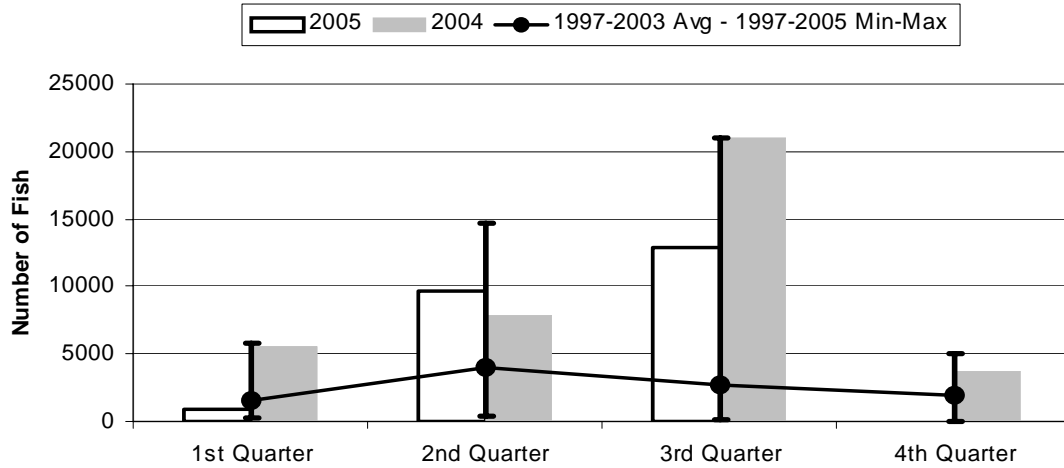
	1st Quarter	2nd Quarter	3rd Quarter	4th Quarter
2005	461	2489	3742	0
2004	2781	3833	5834	2273
1997-2005 Max	2781	7785	5834	2678
1997-2003 Avg	541	1692	1609	1186
1997-2005 Min	6	26	55	0

Figure 7. American Samoa Longline Skipjack Tuna Catch by Quarter



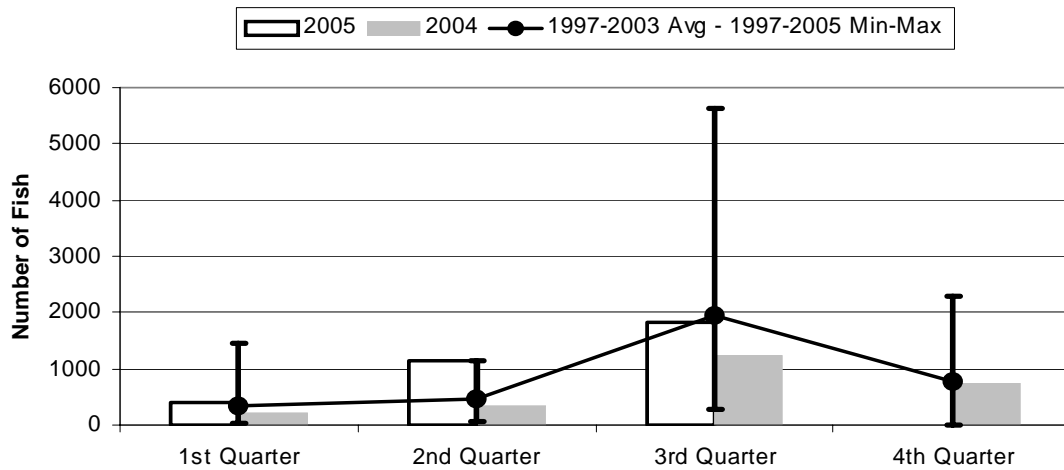
	1st Quarter	2nd Quarter	3rd Quarter	4th Quarter
2005	2.06	12.93	5.64	0.00
2004	3.16	8.40	27.23	7.11
1997-2005 Max	9.81	14.61	27.23	31.19
1997-2003 Avg	2.08	3.28	6.76	6.20
1997-2005 Min	0.00	0.01	0.24	0.00

Figure 8. American Samoa Longline Yellowfin Tuna Catch by Quarter



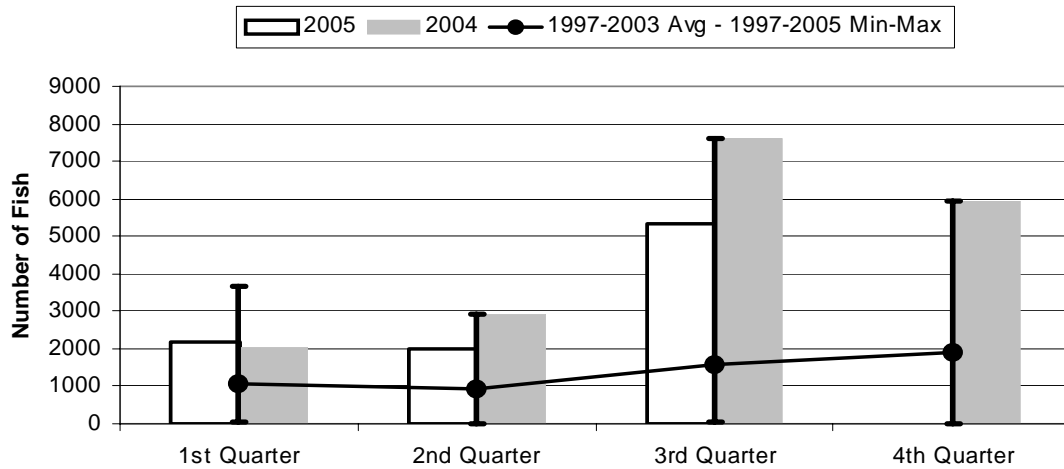
	1st Quarter	2nd Quarter	3rd Quarter	4th Quarter
2005	951	9680	12944	0
2004	5491	7812	20993	3771
1997-2005 Max	5848	14681	20993	5078
1997-2003 Avg	1602	4010	2732	1950
1997-2005 Min	213	356	84	0

Figure 9. American Samoa Mahimahi Catch by Quarter



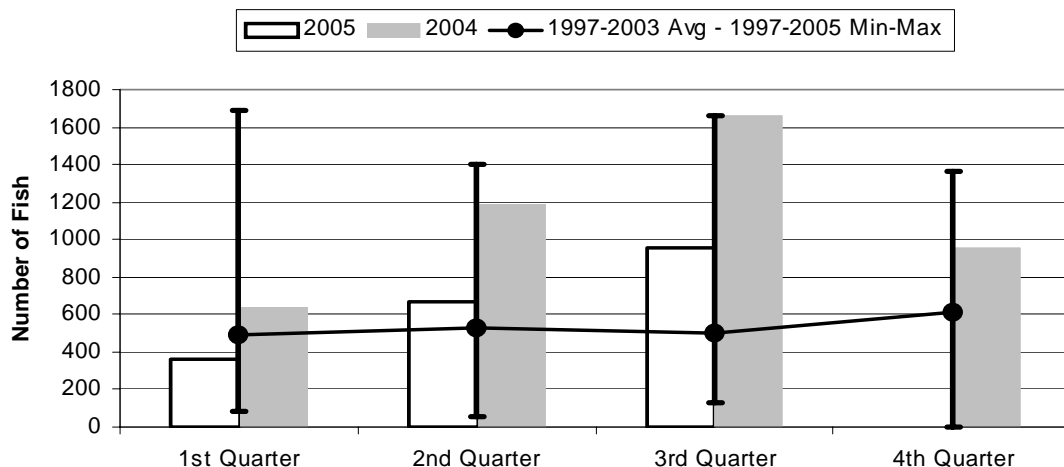
	1st Quarter	2nd Quarter	3rd Quarter	4th Quarter
2005	409	1154	1813	0
2004	214	348	1240	751
1997-2005 Max	1455	1154	5642	2297
1997-2003 Avg	346	450	1951	772
1997-2005 Min	30	59	280	0

Figure 10. American Samoa Wahoo Catch by Quarter



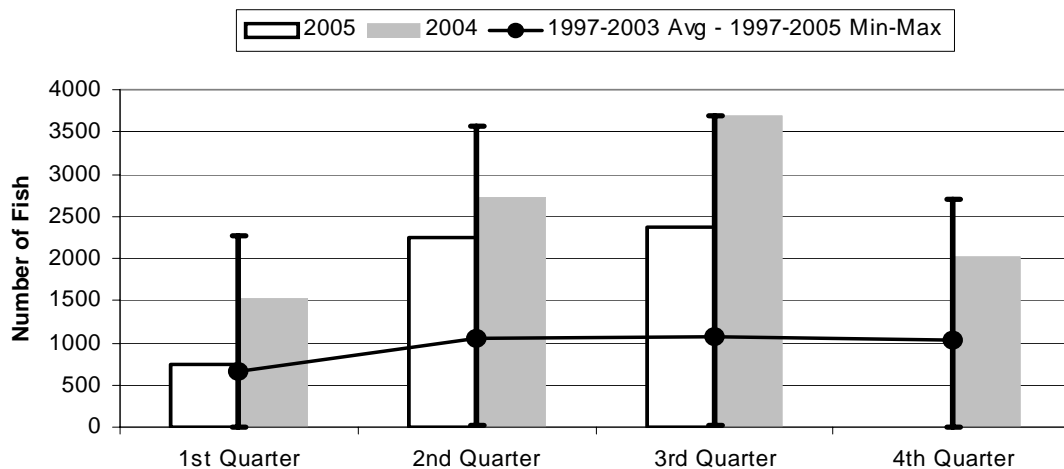
	1st Quarter	2nd Quarter	3rd Quarter	4th Quarter
2005	2158	2007	5341	0
2004	2024	2921	7629	5918
1997-2005 Max	3681	2921	7629	5918
1997-2003 Avg	1084	935	1594	1903
1997-2005 Min	27	20	68	0

Figure 11. American Samoa Billfish Catch by Quarter



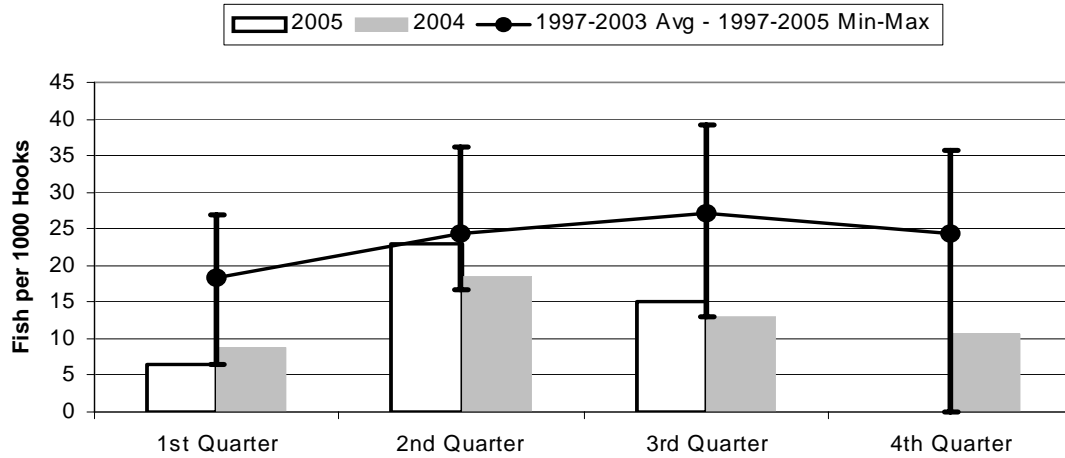
	1st Quarter	2nd Quarter	3rd Quarter	4th Quarter
2005	360	668	958	0
2004	636	1186	1663	959
1997-2005 Max	1692	1404	1663	1361
1997-2003 Avg	491	533	500	612
1997-2005 Min	83	58	132	0

Figure 12. American Samoa Shark Catch by Quarter



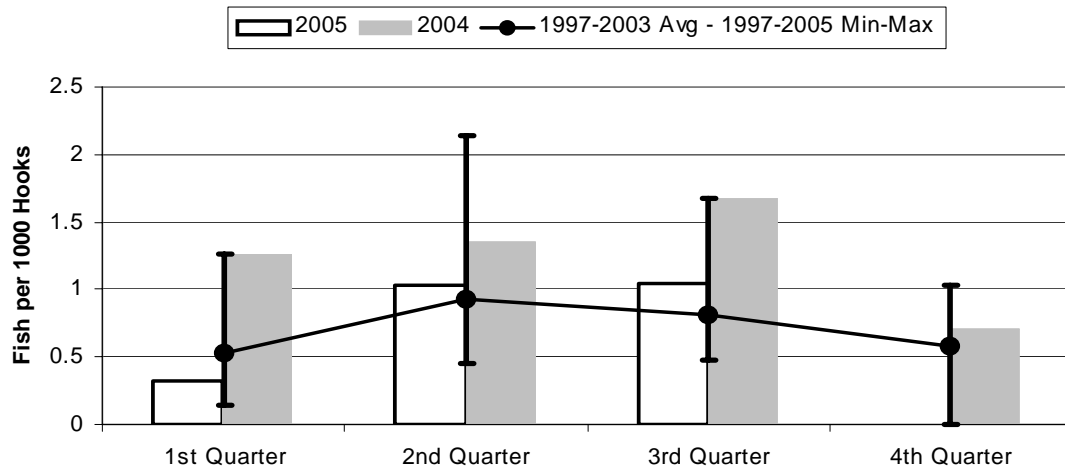
	1st Quarter	2nd Quarter	3rd Quarter	4th Quarter
2005	747	2251	2366	0
2004	1522	2729	3686	2017
1997-2005 Max	2262	3562	3686	2695
1997-2003 Avg	659	1062	1066	1029
1997-2005 Min	5	16	26	0

Figure 13. American Samoa Longline Albacore Catch/1000 Hooks by Quarter



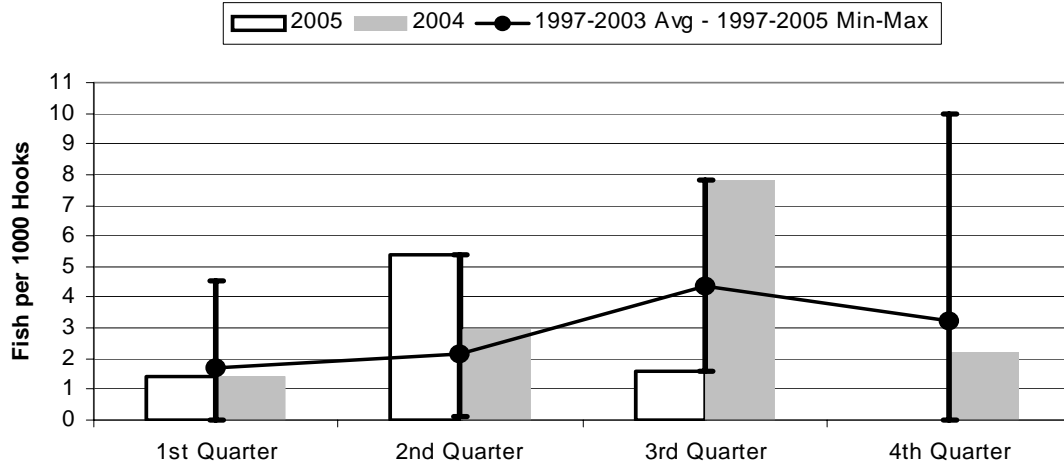
	1st Quarter	2nd Quarter	3rd Quarter	4th Quarter
2005	6.59	22.88	15.10	0.00
2004	8.73	18.64	12.96	10.56
1997-2005 Max	27.01	36.18	39.13	35.75
1997-2003 Avg	18.38	24.34	27.14	24.42
1997-2005 Min	6.59	16.77	12.96	0.00

Figure 14. American Samoa Longline Bigeye Tuna Catch/1000 Hooks by Quarter



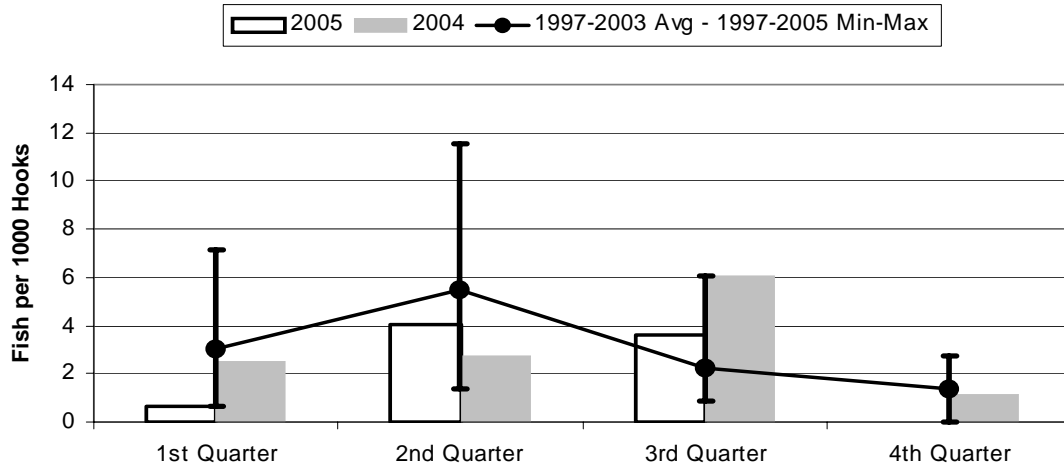
	1st Quarter	2nd Quarter	3rd Quarter	4th Quarter
2005	0.323	1.037	1.038	0.000
2004	1.267	1.351	1.679	0.715
1997-2005 Max	1.267	2.145	1.679	1.030
1997-2003 Avg	0.527	0.929	0.805	0.578
1997-2005 Min	0.146	0.452	0.478	0.000

Figure 15. American Samoa Longline Skipjack Tuna Catch/1000 Hooks by Quarter



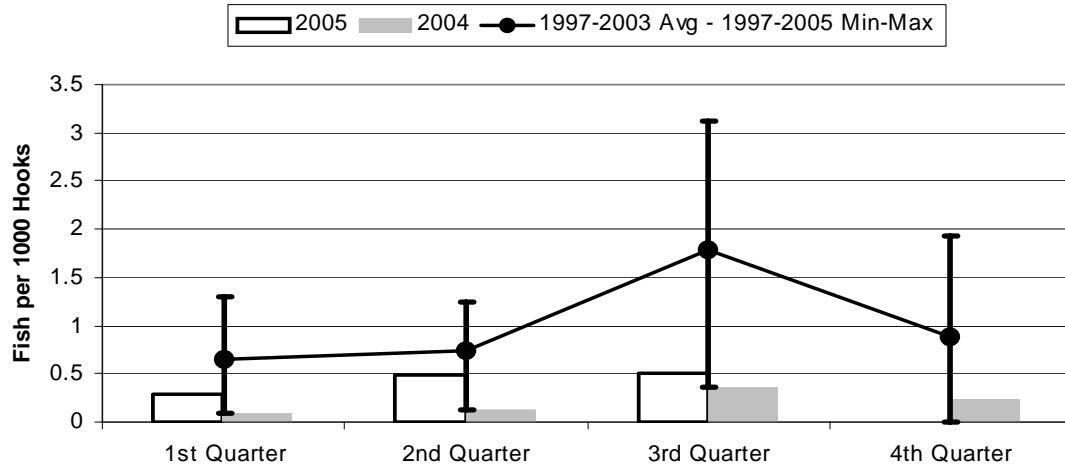
	1st Quarter	2nd Quarter	3rd Quarter	4th Quarter
2005	1.444	5.388	1.565	0.000
2004	1.440	2.960	7.838	2.237
1997-2005 Max	4.556	5.388	7.838	9.975
1997-2003 Avg	1.700	2.145	4.353	3.249
1997-2005 Min	0.000	0.118	1.565	0.000

Figure 16. American Samoa Yellowfin Tuna Catch/1000 Hooks by Quarter



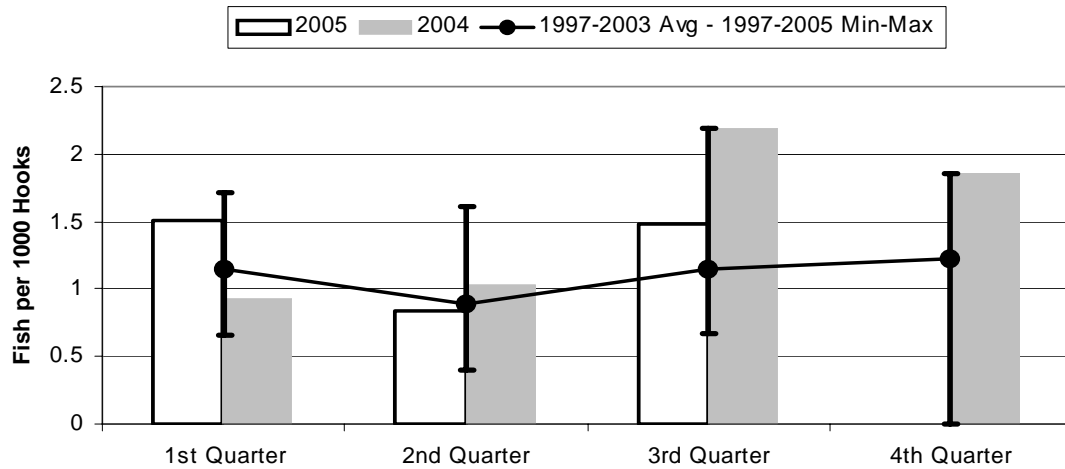
	1st Quarter	2nd Quarter	3rd Quarter	4th Quarter
2005	0.665	4.034	3.590	0.000
2004	2.502	2.754	6.042	1.186
1997-2005 Max	7.120	11.51	6.042	2.757
1997-2003 Avg	3.041	5.479	2.233	1.377
1997-2005 Min	0.665	1.395	0.831	0.000

Figure 17. American Samoa Longline Mahimahi Catch/1000 Hooks by Quarter



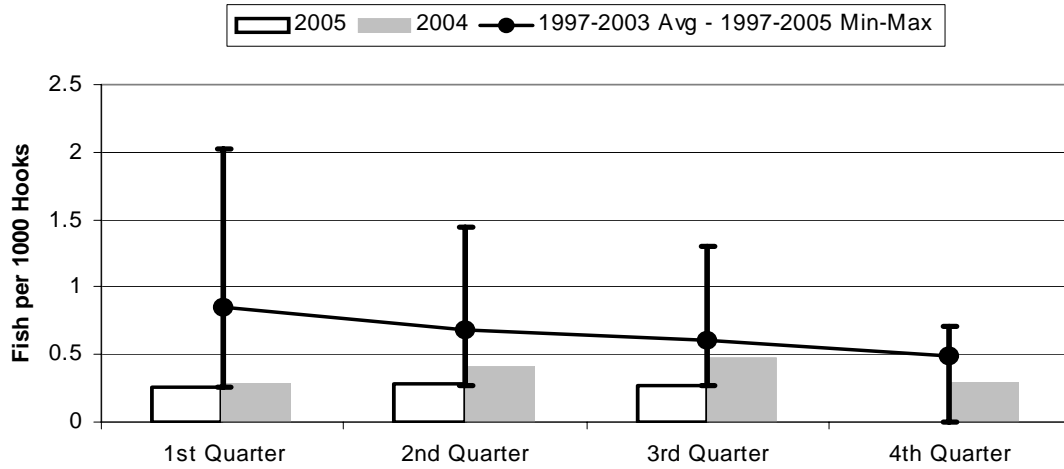
	1st Quarter	2nd Quarter	3rd Quarter	4th Quarter
2005	0.286	0.481	0.503	0.000
2004	0.098	0.123	0.357	0.236
1997-2005 Max	1.304	1.248	3.125	1.932
1997-2003 Avg	0.650	0.748	1.790	0.887
1997-2005 Min	0.091	0.123	0.357	0.000

Figure 18. American Samoa Wahoo Catch/1000 Hooks by Quarter



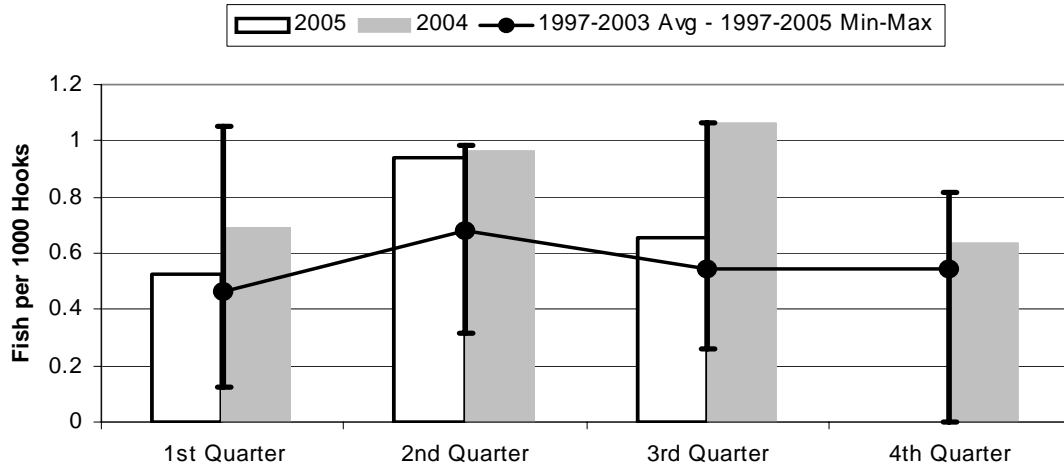
	1st Quarter	2nd Quarter	3rd Quarter	4th Quarter
2005	1.510	0.836	1.481	0.000
2004	0.922	1.030	2.196	1.861
1997-2005 Max	1.710	1.617	2.196	1.861
1997-2003 Avg	1.146	0.885	1.149	1.218
1997-2005 Min	0.657	0.394	0.673	0.000

Figure 19. American Samoa Billfish Catch/1000 Hooks by Quarter



	1st Quarter	2nd Quarter	3rd Quarter	4th Quarter
2005	0.252	0.278	0.266	0.000
2004	0.290	0.418	0.479	0.302
1997-2005 Max	2.019	1.439	1.306	0.712
1997-2003 Avg	0.854	0.682	0.600	0.488
1997-2005 Min	0.252	0.268	0.266	0.000

Figure 20. American Samoa Shark Catch/1000 Hooks by Quarter



	1st Quarter	2nd Quarter	3rd Quarter	4th Quarter
2005	0.523	0.938	0.656	0.000
2004	0.694	0.962	1.061	0.635
1997-2005 Max	1.051	0.986	1.061	0.819
1997-2003 Avg	0.462	0.681	0.546	0.545
1997-2005 Min	0.122	0.315	0.257	0.000