

Department of Marine & Wildlife Resources
Report on the NMFS Logbook Program for the
American Samoa Longline Fishery
July-September 2006

February 16, 2007

Logbook data in this report are summarized by date of haul as shown in the following table. All submitted logbook data for longline activities during the third quarter of 2006 have been processed and are reported in this preliminary report. As of February 16, 2007, the documented delinquency rate according to the DMWR Daily Effort Census and Delinquency Reporting System for the third quarter of 2006 was 8.61%. The summary data in this report are considered preliminary and subject to change as additional delinquent data are received and processed.

According to the Daily Effort Census, 29 vessels were engaged in longline fishing during the third quarter of 2006 and 26 of these vessels turned in some or all of their longline logs for sets made during the quarter. These 26 vessels made 1,316 sets and set 3,782,410 hooks. This quarter is almost identical to the third quarter of last year in terms of the effort but with a 47% increase in the catch of all species. The number of vessels participating this quarter is down from the 33 participating in the year ago quarter with the number of sets decreasing by 5% and the number of hooks set increasing by 5%. The average number of hooks per set increased from 2606 to 2874, reflecting the continuing trend toward a fishing fleet with a smaller number of larger vessels setting more hooks per set.

The total catch for all species of 130,550 fish was up by 47% compared to the third quarter of last year. Albacore continued to dominate the catch with 80,420 fish caught in the third quarter of 2006. This is also a 47% increase over the 52,890 albacore caught in the third quarter of last year and more than twice the albacore catch during the first quarter of 2006 which is a slow quarter for longline fishing in American Samoa. Catches of other tunas showed a small 10% increase for bigeye tuna when compared to the year ago quarter with a huge 4.15 times increase in the skipjack tuna catch offset by a 49% drop in the yellowfin tuna catch. The catch of non-tuna species except sharks increased compared to the third quarter of 2005 with mahimahi increasing by 64%, wahoo increasing by 35% and billfish increasing by 77%. The shark catch decreased by 15%.

Albacore Catch/1000 Hooks increased by 71% of its value during the slow first quarter of 2006 and by 40% of its year ago value reflecting a much larger catch with a slight increase in the number of hooks set. The Catch/1000 Hooks for all other species rose and fell with the catches for these species but to a lesser extent reflecting the slight increase in effort. The Catch/1000 Hooks for bigeye tuna increased by 5% while the Catch/1000 Hooks for skipjack increased by 3.95 times offset by the Catch/1000 Hooks for yellowfin which decreased by 47%. The Catch/1000 Hooks for mahimahi increased by 56%, the Catch/1000 Hooks for wahoo increased by 29%, the Catch/1000 Hooks for billfish increased by 69% and the Catch/1000 Hooks for sharks decreased by 19%

Western Pacific Logbook Summary Report for 3rd Quarter 2006

Vessels landing or based in American Samoa
Based on Date of Haul for all areas

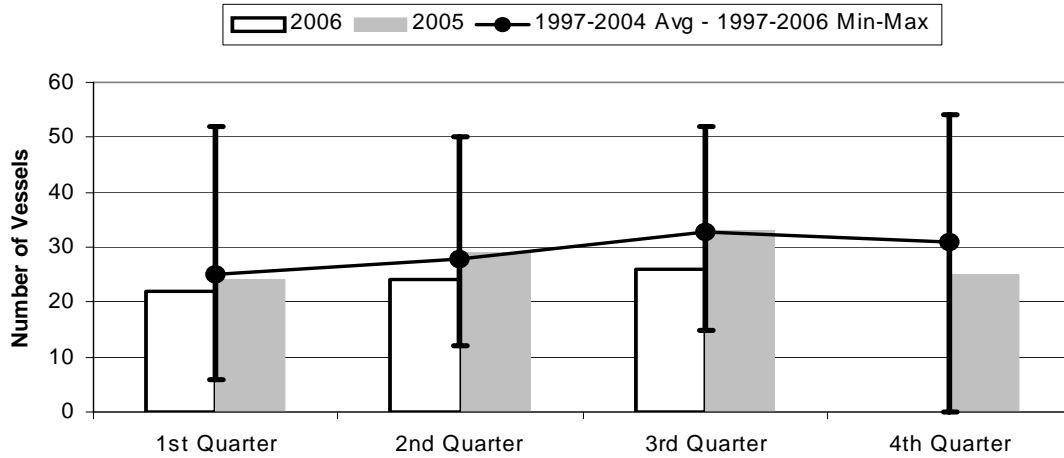
TRIP INFORMATION

Number of Vessels:	26
Number of Sets:	1316
1000's of Hooks Set:	3782
Number of Lightsticks Used:	756

CATCH INFORMATION

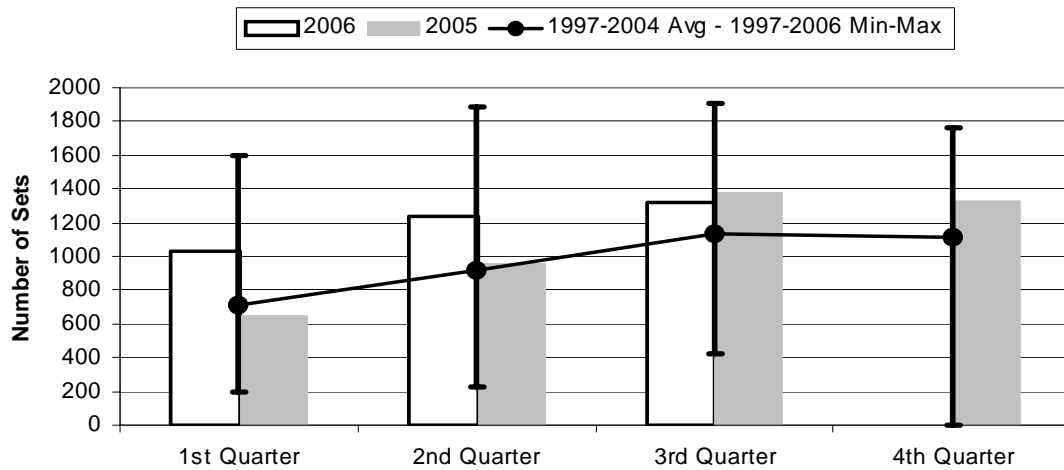
Species	# Caught	# Kept	# Finned	# Caught/ 1000 Hooks
BILLFISH				
Blue marlin	671	104		0.18
Striped marlin	123	12		0.03
Sailfish	222	6		0.06
Spearfish	604	85		0.16
Swordfish	79	57		0.02
TOTALS	1699	264		0.45
SHARKS				
Blue shark	1310	1		0.35
Shortfin mako shark	86	2		0.02
Thresher shark	98	0		0.03
White tip oceanic shark	417	0		0.11
Other sharks	96	0		0.03
TOTALS	2007	3		0.53
TUNA				
Albacore	80420	80371		21.26
Bigeye tuna	4138	3757		1.09
Bluefin tuna	19	19		0.01
Skipjack tuna	23421	17760		6.19
Yellowfin tuna	6390	6043		1.69
TOTALS	114388	107950		30.24
OTHER PELAGICS				
Mahimahi	2976	1193		0.79
Moonfish	191	27		0.05
Oilfish	1762	2		0.47
Pomfret	133	29		0.04
Wahoo	7219	6325		1.91
TOTALS	12281	7576		3.25
NON-PMUS				
Other pelagic fish	173	4		0.05
TOTALS	173	4		0.05

Figure 1. American Samoa Longline Vessels Submitting Logs by Quarter for



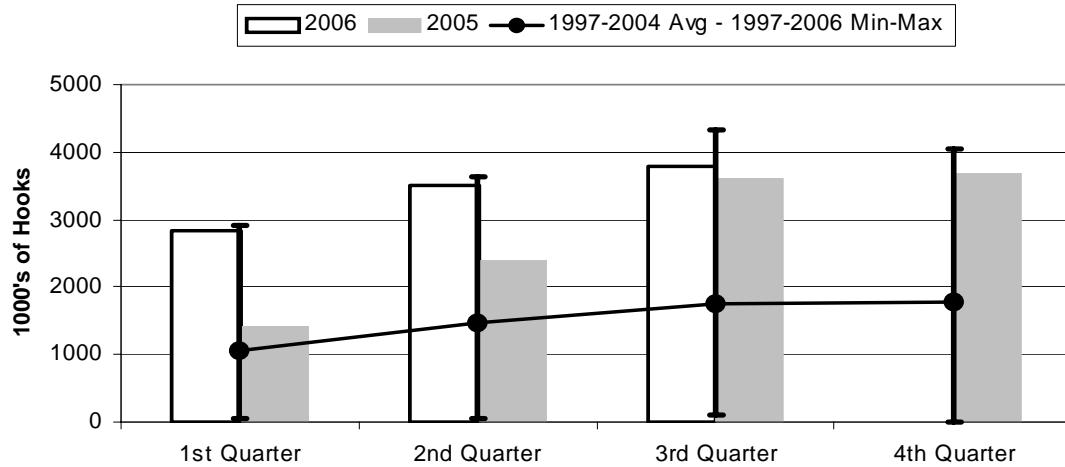
	1st Quarter	2nd Quarter	3rd Quarter	4th Quarter
2006	22	24	26	0
2005	24	29	33	25
1997-2006 Max	52	50	52	54
1997-2004 Avg	25.0	27.9	32.9	31.0
1997-2006 Min	6	12	15	0

Figure 2. Number of Sets by American Samoa Longline Vessels by Quarter for



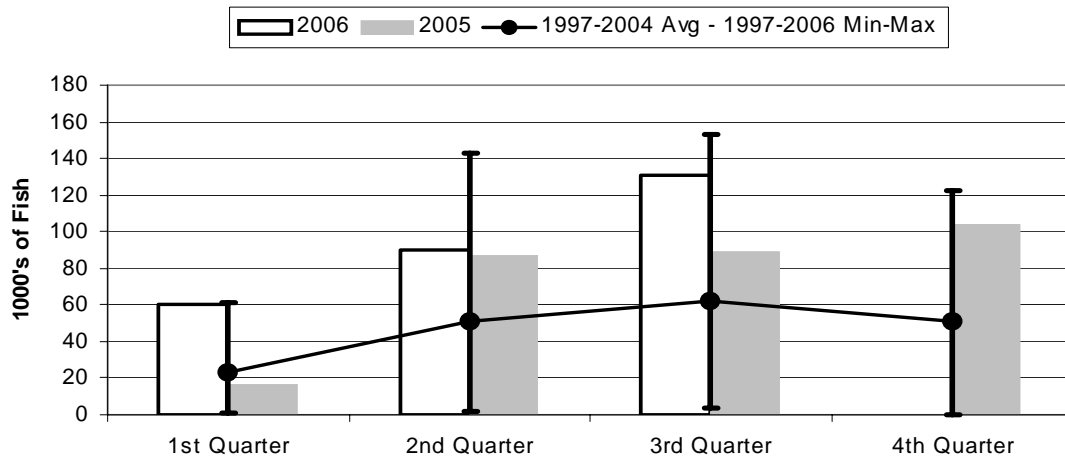
	1st Quarter	2nd Quarter	3rd Quarter	4th Quarter
2006	1027	1238	1316	0
2005	653	956	1384	1326
1997-2006 Max	1602	1886	1903	1758
1997-2004 Avg	715	913	1130	1110
1997-2006 Min	192	223	424	0

Figure 3. Number of Hooks Set by the American Samoa Longline Fleet by Quarter for



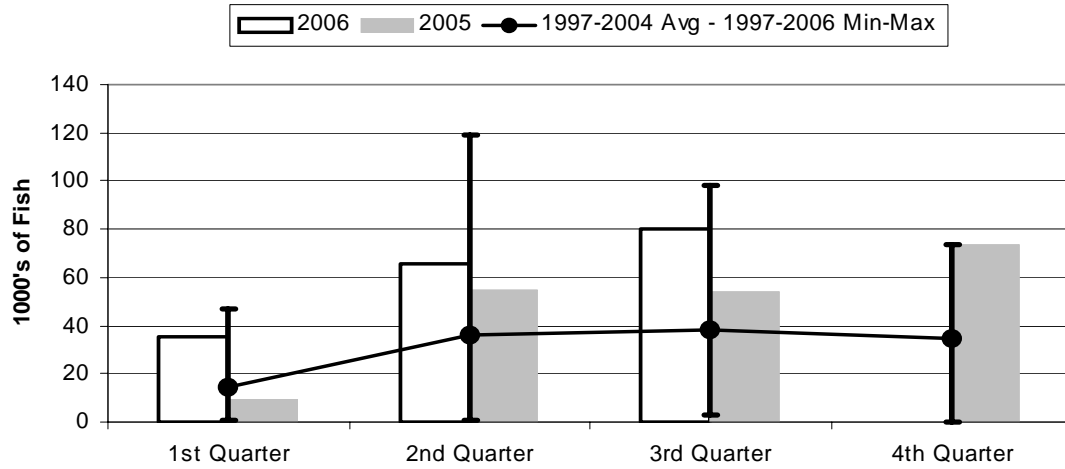
	1st Quarter	2nd Quarter	3rd Quarter	4th Quarter
2006	2837	3496	3782	0
2005	1427	2400	3608	3685
1997-2006 Max	2902	3629	4338	4044
1997-2004 Avg	1044	1462	1751	1766
1997-2006 Min	41	51	101	0

Figure 4. American Samoa Longline Total Catch (All Species) by Quarter for



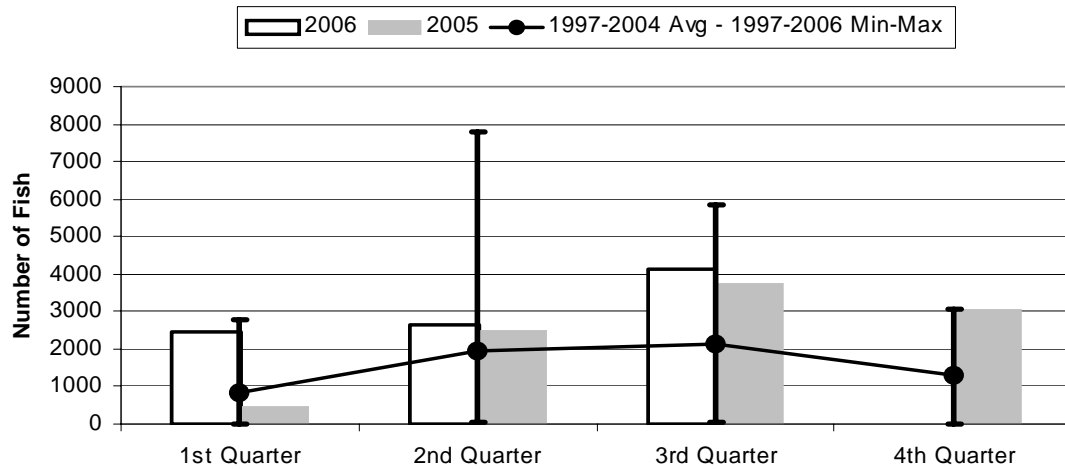
	1st Quarter	2nd Quarter	3rd Quarter	4th Quarter
2006	60.64	90.39	130.55	0.00
2005	17.15	87.16	88.71	104.31
1997-2006 Max	61.24	142.60	153.30	122.34
1997-2004 Avg	22.92	50.84	62.07	51.24
1997-2006 Min	1.32	1.42	4.13	0.00

Figure 5. American Samoa Longline Albacore Catch by Quarter for



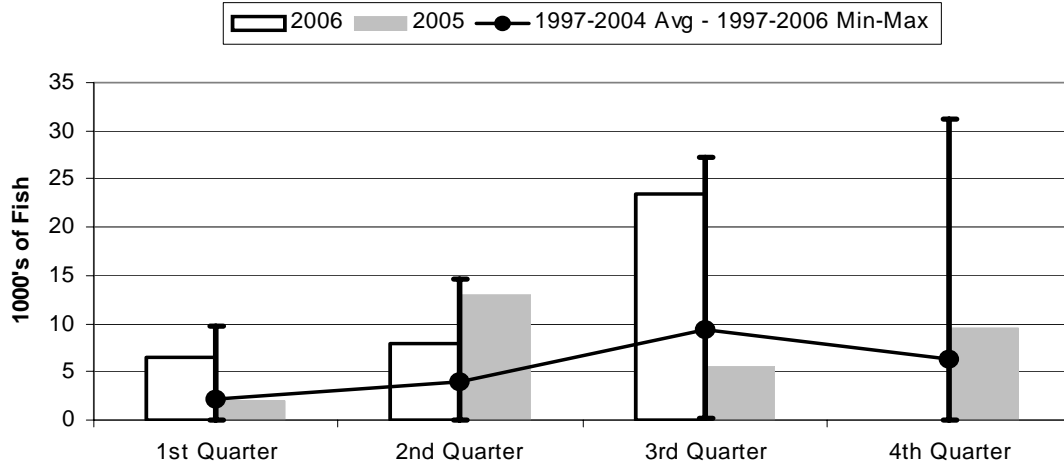
	1st Quarter	2nd Quarter	3rd Quarter	4th Quarter
2006	35.14	65.54	80.42	0.00
2005	9.38	54.90	54.46	73.80
1997-2006 Max	46.98	118.99	98.09	73.80
1997-2004 Avg	14.41	35.94	37.92	34.80
1997-2006 Min	0.94	0.85	3.18	0.00

Figure 6. American Samoa Longline Bigeye Tuna Catch by Quarter for



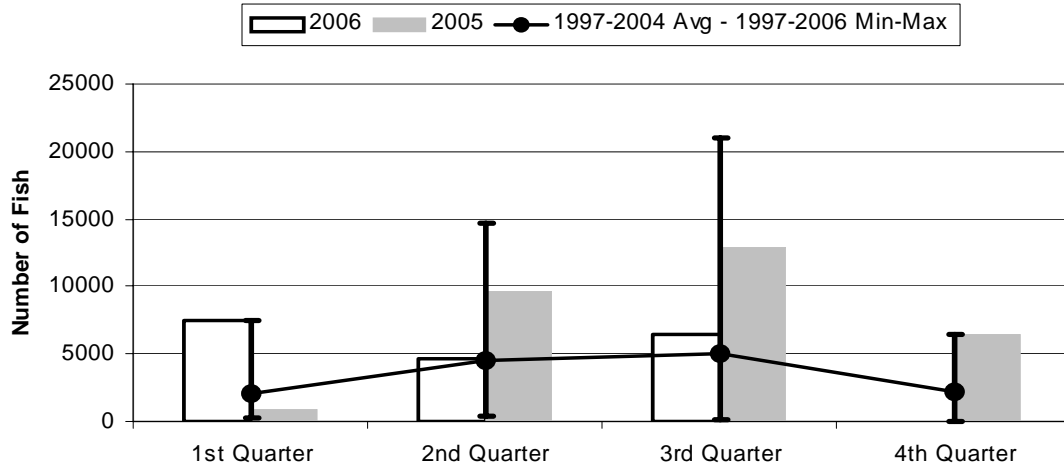
	1st Quarter	2nd Quarter	3rd Quarter	4th Quarter
2006	2437	2628	4138	0
2005	459	2489	3742	3060
1997-2006 Max	2781	7785	5834	3060
1997-2004 Avg	821	1960	2137	1322
1997-2006 Min	6	26	55	0

Figure 7. American Samoa Longline Skipjack Tuna Catch by Quarter for



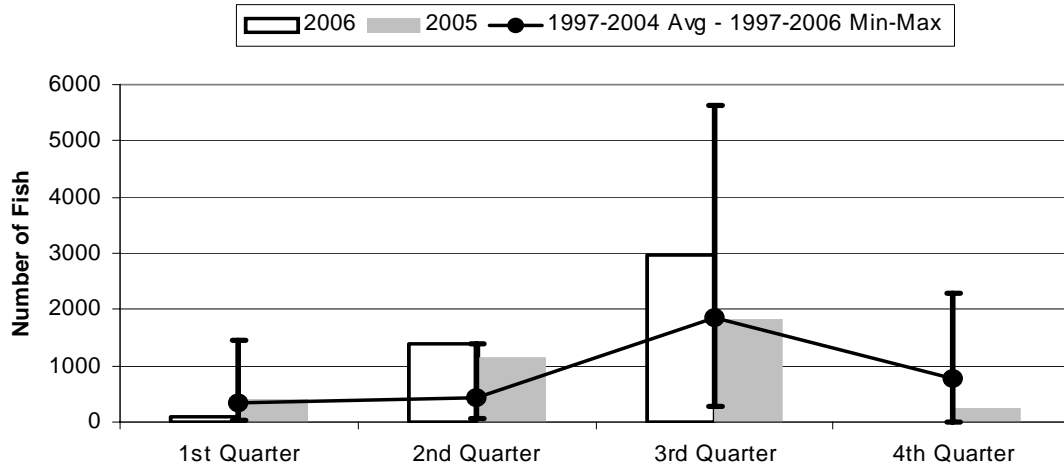
	1st Quarter	2nd Quarter	3rd Quarter	4th Quarter
2006	6.58	7.85	23.42	0.00
2005	2.06	12.93	5.64	9.55
1997-2006 Max	9.81	14.61	27.23	31.19
1997-2004 Avg	2.22	3.92	9.32	6.32
1997-2006 Min	0.00	0.01	0.24	0.00

Figure 8. American Samoa Longline Yellowfin Tuna Catch by Quarter for



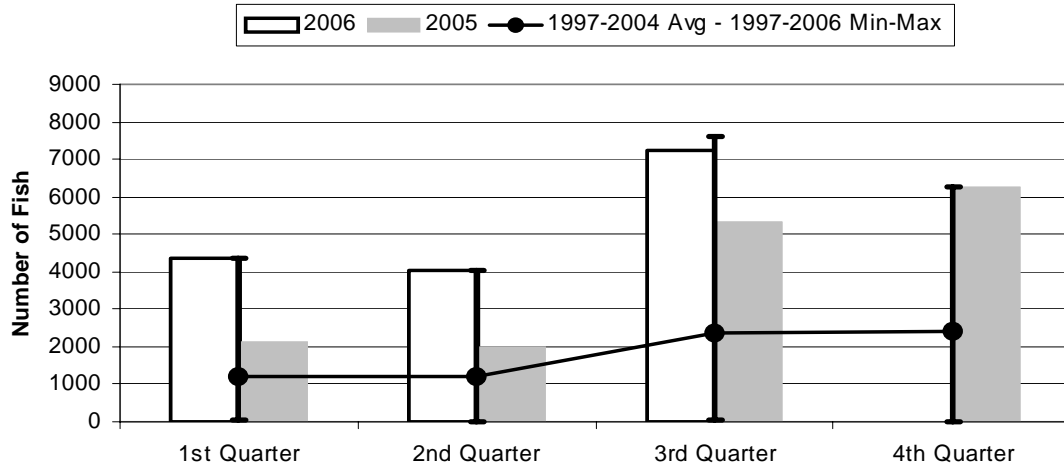
	1st Quarter	2nd Quarter	3rd Quarter	4th Quarter
2006	7419	4583	6390	0
2005	946	9680	12944	6480
1997-2006 Max	7419	14681	20993	6480
1997-2004 Avg	2088	4486	5015	2177
1997-2006 Min	213	356	84	0

Figure 9. American Samoa Mahimahi Catch by Quarter for



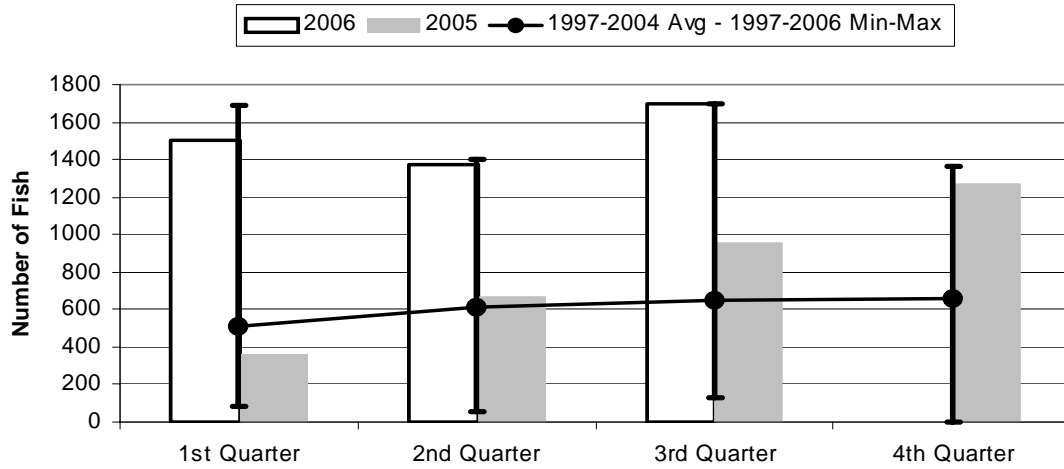
	1st Quarter	2nd Quarter	3rd Quarter	4th Quarter
2006	97	1378	2976	0
2005	409	1154	1813	235
1997-2006 Max	1455	1378	5642	2297
1997-2004 Avg	330	437	1862	769
1997-2006 Min	30	59	280	0

Figure 10. American Samoa Wahoo Catch by Quarter for



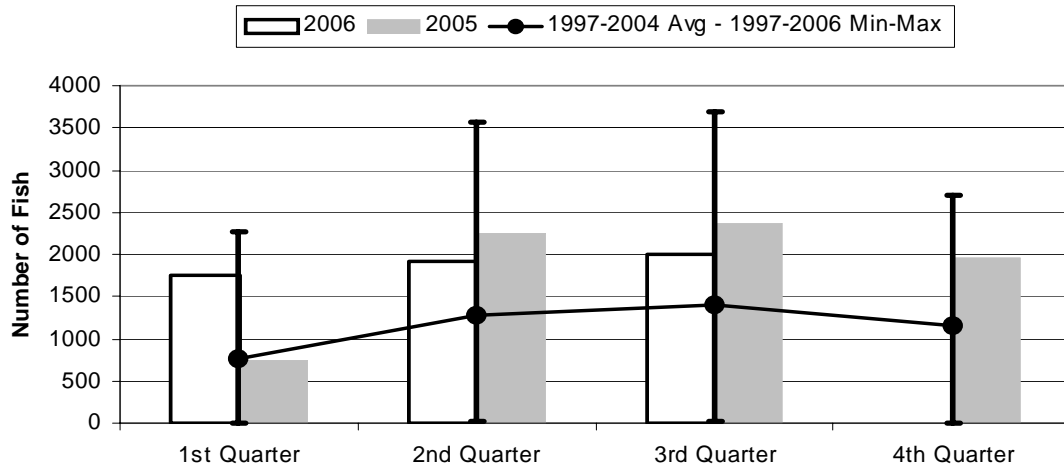
	1st Quarter	2nd Quarter	3rd Quarter	4th Quarter
2006	4367	4058	7219	0
2005	2153	2007	5348	6267
1997-2006 Max	4367	4058	7629	6267
1997-2004 Avg	1202	1183	2349	2405
1997-2006 Min	27	20	68	0

Figure 11. American Samoa Billfish Catch by Quarter for



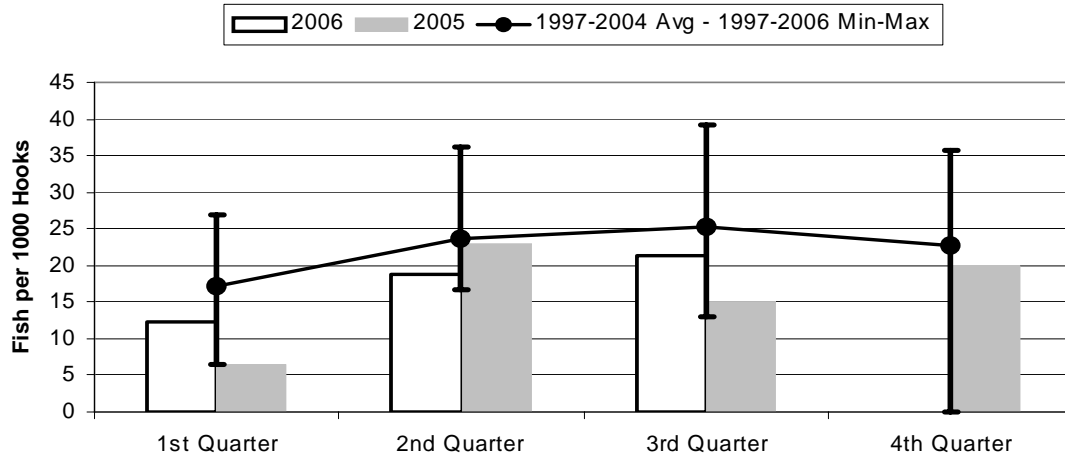
	1st Quarter	2nd Quarter	3rd Quarter	4th Quarter
2006	1507	1370	1699	0
2005	360	668	958	1268
1997-2006 Max	1692	1404	1699	1361
1997-2004 Avg	509	615	645	655
1997-2006 Min	83	58	132	0

Figure 12. American Samoa Shark Catch by Quarter for



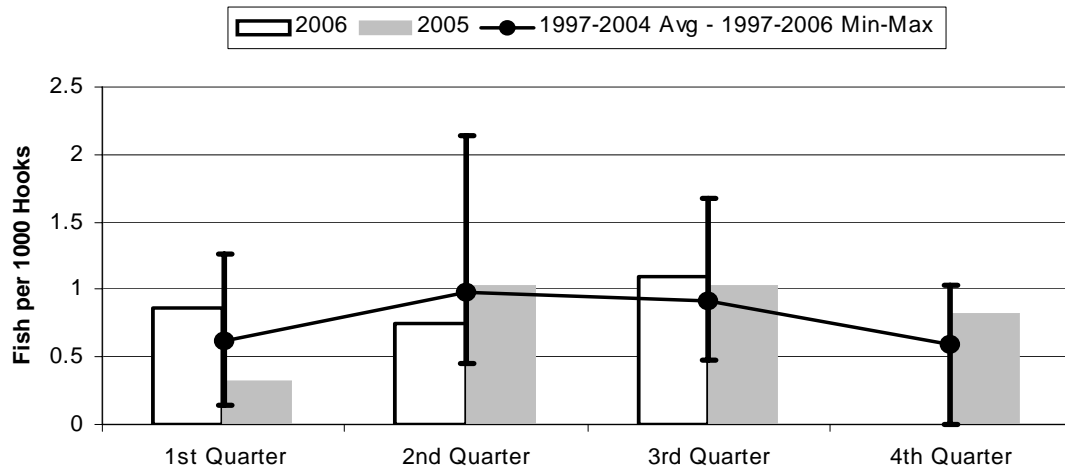
	1st Quarter	2nd Quarter	3rd Quarter	4th Quarter
2006	1757	1909	2007	0
2005	745	2251	2366	1969
1997-2006 Max	2262	3562	3686	2695
1997-2004 Avg	767	1270	1394	1152
1997-2006 Min	5	16	26	0

Figure 13. American Samoa Longline Albacore Catch/1000 Hooks by Quarter for



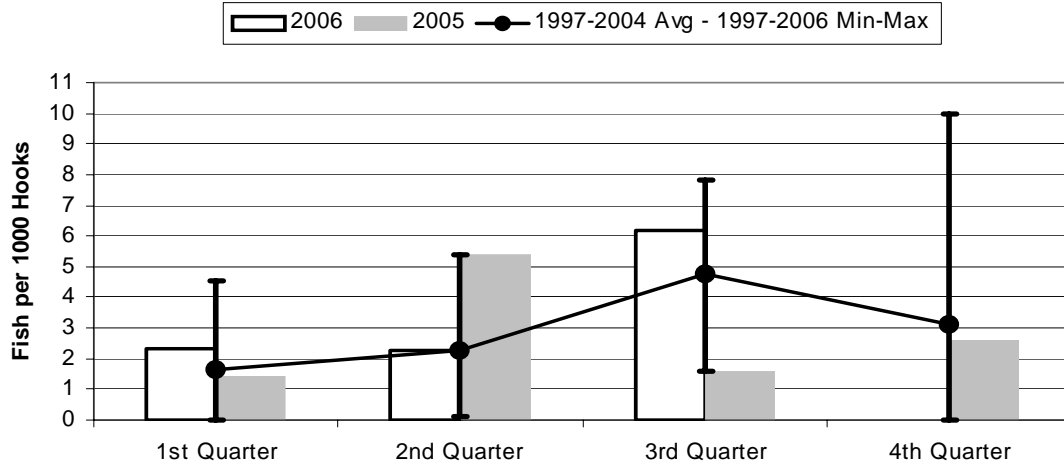
	1st Quarter	2nd Quarter	3rd Quarter	4th Quarter
2006	12.39	18.75	21.26	0.00
2005	6.58	22.88	15.09	20.03
1997-2006 Max	27.01	36.18	39.13	35.75
1997-2004 Avg	17.17	23.62	25.37	22.69
1997-2006 Min	6.58	16.77	12.96	0.00

Figure 14. American Samoa Longline Bigeye Tuna Catch/1000 Hooks by Quarter for



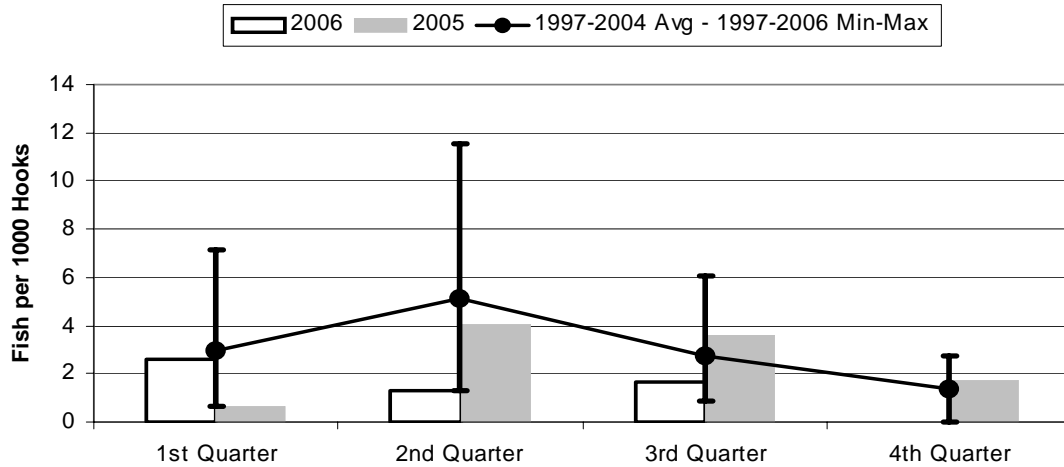
	1st Quarter	2nd Quarter	3rd Quarter	4th Quarter
2006	0.859	0.752	1.094	0.000
2005	0.322	1.037	1.037	0.830
1997-2006 Max	1.267	2.145	1.679	1.030
1997-2004 Avg	0.619	0.982	0.915	0.595
1997-2006 Min	0.146	0.452	0.478	0.000

Figure 15. American Samoa Longline Skipjack Tuna Catch/1000 Hooks by Quarter for



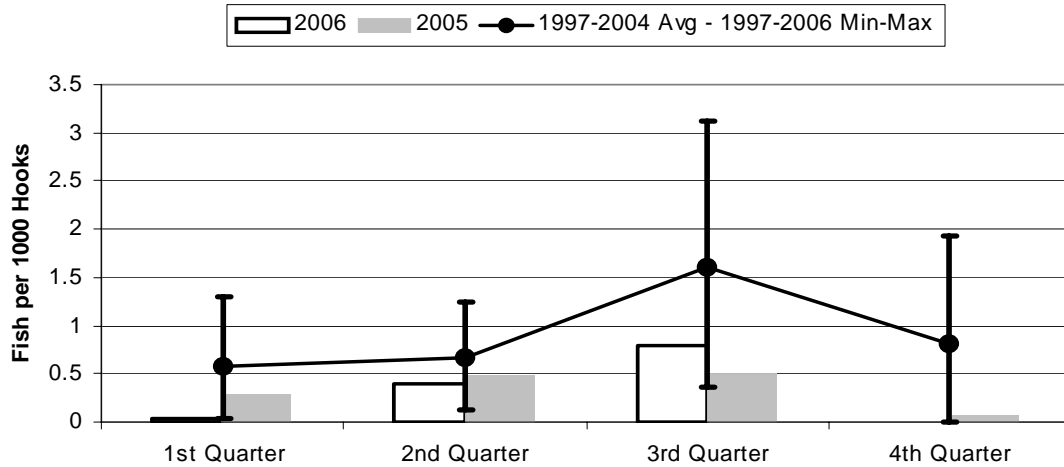
	1st Quarter	2nd Quarter	3rd Quarter	4th Quarter
2006	2.319	2.245	6.192	0.000
2005	1.443	5.388	1.564	2.591
1997-2006 Max	4.556	5.388	7.837	9.975
1997-2004 Avg	1.667	2.247	4.789	3.123
1997-2006 Min	0.000	0.118	1.564	0.000

Figure 16. American Samoa Yellowfin Tuna Catch/1000 Hooks by Quarter for



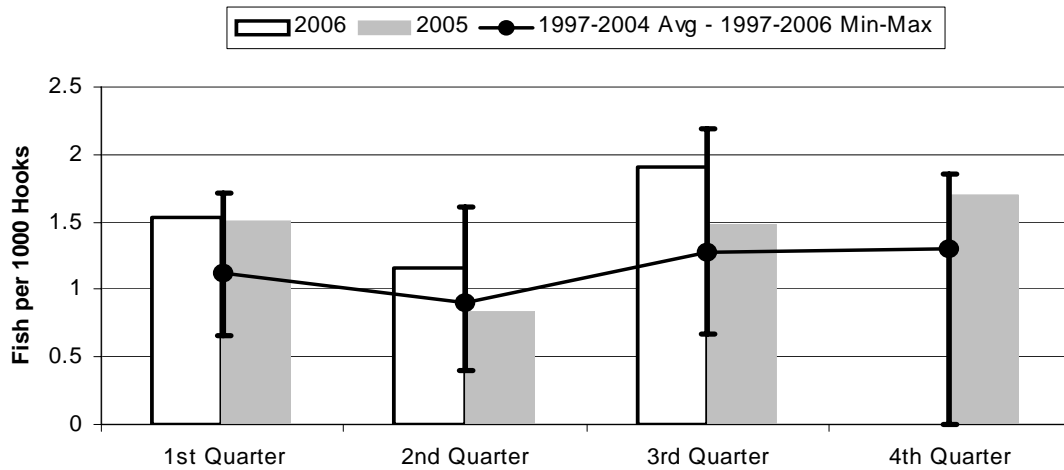
	1st Quarter	2nd Quarter	3rd Quarter	4th Quarter
2006	2.615	1.311	1.689	0.000
2005	0.663	4.034	3.588	1.758
1997-2006 Max	7.120	11.51	6.041	2.757
1997-2004 Avg	2.974	5.138	2.709	1.353
1997-2006 Min	0.663	1.311	0.831	0.000

Figure 17. American Samoa Longline Mahimahi Catch/1000 Hooks by Quarter for



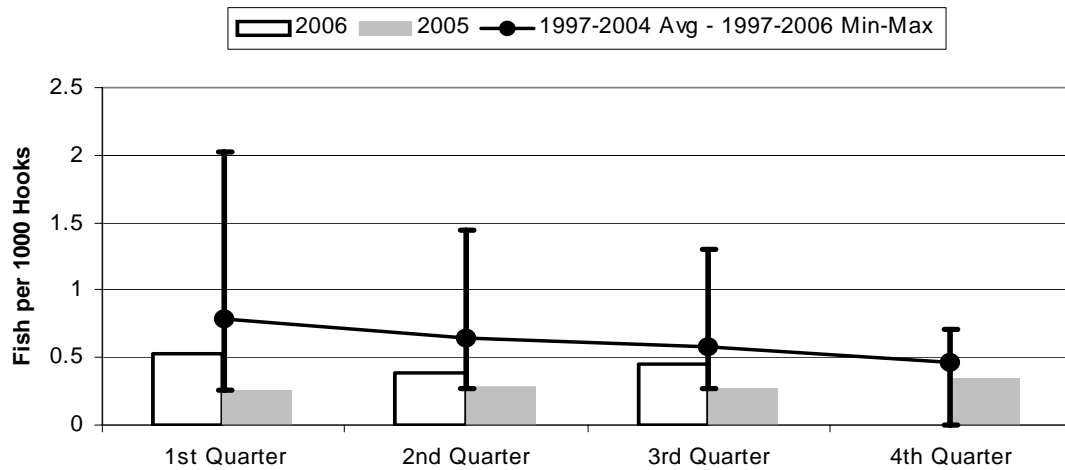
	1st Quarter	2nd Quarter	3rd Quarter	4th Quarter
2006	0.034	0.394	0.787	0.000
2005	0.287	0.481	0.503	0.064
1997-2006 Max	1.304	1.248	3.125	1.932
1997-2004 Avg	0.581	0.669	1.611	0.806
1997-2006 Min	0.034	0.123	0.357	0.000

Figure 18. American Samoa Wahoo Catch/1000 Hooks by Quarter for



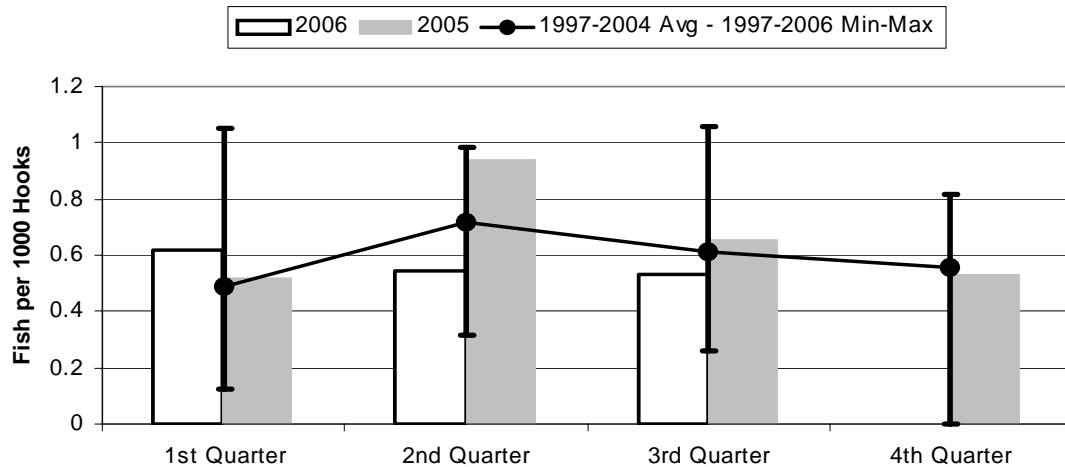
	1st Quarter	2nd Quarter	3rd Quarter	4th Quarter
2006	1.540	1.161	1.909	0.000
2005	1.509	0.836	1.482	1.701
1997-2006 Max	1.710	1.617	2.195	1.861
1997-2004 Avg	1.118	0.903	1.280	1.299
1997-2006 Min	0.657	0.394	0.673	0.000

Figure 19. American Samoa Billfish Catch/1000 Hooks by Quarter for



	1st Quarter	2nd Quarter	3rd Quarter	4th Quarter
2006	0.531	0.392	0.449	0.000
2005	0.252	0.278	0.265	0.344
1997-2006 Max	2.019	1.439	1.306	0.712
1997-2004 Avg	0.783	0.649	0.585	0.465
1997-2006 Min	0.252	0.268	0.265	0.000

Figure 20. American Samoa Shark Catch/1000 Hooks by Quarter for



	1st Quarter	2nd Quarter	3rd Quarter	4th Quarter
2006	0.619	0.546	0.531	0.000
2005	0.522	0.938	0.656	0.534
1997-2006 Max	1.051	0.986	1.061	0.819
1997-2004 Avg	0.491	0.716	0.610	0.556
1997-2006 Min	0.122	0.315	0.257	0.000