

Department of Marine & Wildlife Resources
Report on the NMFS Logbook Program for the
American Samoa Longline Fishery
October-December 2004

May 16, 2005

The Department of Marine and Wildlife Resources (DMWR) began processing the longline logbook data locally at the beginning of the year 2000 and very significant progress has been made to improve compliance of reporting requirements in the American Samoa longline fishery. Logbook data in this report are summarized by date of haul as shown in the following table. All submitted logbook data for longline activities during the fourth quarter of 2004 have been processed and are reported in this preliminary report. The documented delinquency rate according to the DMWR Daily Effort Census and Delinquency Reporting System for the fourth quarter of 2004 was 8.47%. The summary data in this report are considered preliminary and subject to change as additional delinquent data are received and processed.

According to the Daily Effort Census, 36 vessels were engaged in longline fishing during the fourth quarter of 2004 and 31 of these vessels turned in some or all of their longline logs for sets made during the quarter. These 31 vessels made 1,297 sets and set 3,165,296 hooks. Compared to the fourth quarter of 2003, this is a 18.0% decrease in the number of hooks set. The average number of hooks per set decreased for the first time since the longline fishery started, from 2,485 to 2,440 (-1.8%). Probably caused by the fact that the biggest longliners have started to leave the American Samoa fishing grounds.

Albacore continued to dominate the catch with only 33,454 fish caught in the fourth quarter of 2004. This is a dramatic decrease by 52.4% of its one year ago value (70,240 in 4th quarter 2003) this is also a decrease by 23% of the albacore catch for the 3rd quarter of 2004. The total catch of all species decreased by 39.2% indicating a global rarity of the fish. Big eye tuna catches decreased by 7.5%, yellow fin tuna decreased by 21.7 % billfish decreased by 18.8 % and the sharks by 21.9%. The skipjack tuna catches increased by 21.2%, Wahoo increased by 15.7 %, while Mahi mahi remain the same (-0.8%).

The global CPUE decreased by 25.8 %.

Albacore CPUE decreased by 19% of its previous quarter value and by 41.9% of its a year ago value to 10.57 fish per 1000 hooks in the fourth quarter of 2004. This is the all time lowest value observed for this species. The CPUE for Yellow fin tuna and sharks decreased by 4.54% and 4.75%. The CPUE for Mahimahi increased by 20.9%, the CPUE for skip jack increased by 47.7 %, The CPUE for Big eye increased by 12.8%, and the CPUE for Wahoo increased by 41.1%. CPUE for billfish remain about the same (-1.0%).

Western Pacific Logbook Summary Report for 4th Quarter 2004

Vessels landing or based in American Samoa
Based on Date of Haul for all areas

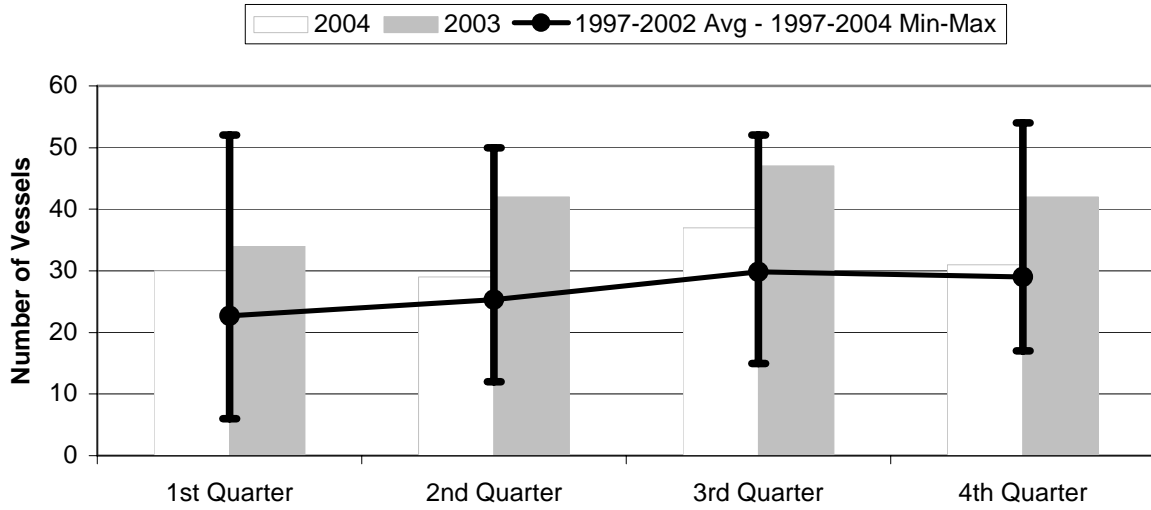
TRIP INFORMATION

Number of Vessels:	31
Number of Sets:	1297
1000's of Hooks Set:	3165
Number of Lightsticks Used:	1329

CATCH INFORMATION

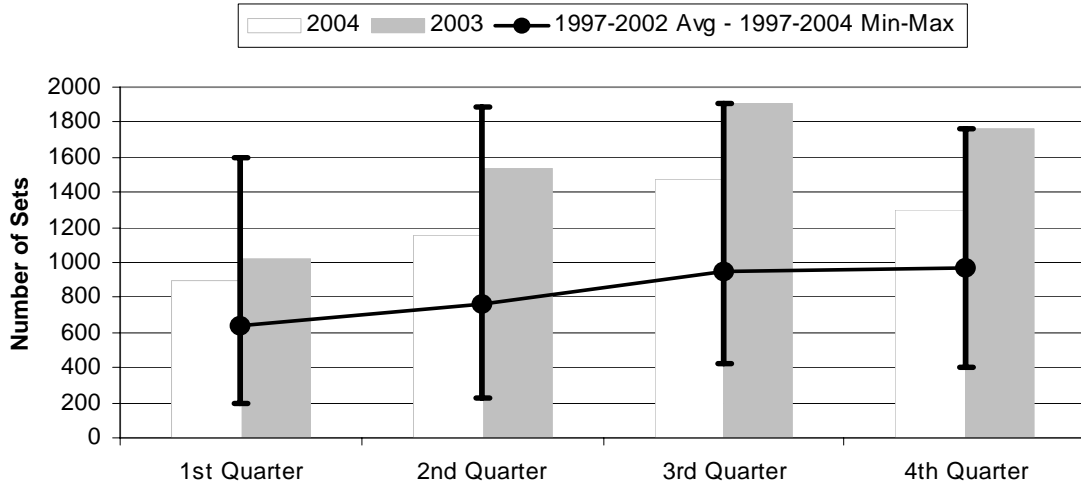
Species	# Caught	# Kept	# Finned	# Caught/ 1000 Hooks
BILLFISH				
Black marlin	6	1		0.00
Blue marlin	573	60		0.18
Striped Marlin	88	31		0.03
Sailfish	117	13		0.04
Spearfish	89	9		0.03
Swordfish	83	53		0.03
TOTALS	956	167		0.30
SHARKS				
Blue shark	1306	17		0.41
Mako Shark	66	4		0.02
Thresher Shark	81	0		0.03
White-Tip Shark	464	2		0.15
Other Pelagic Sharks	100	0		0.03
TOTALS	2017	23		0.64
TUNA				
Albacore	33454	33223		10.57
Bigeye Tuna	2270	2053		0.72
Bluefin Tuna	6	6		0.00
Skipjack Tuna	7077	6004		2.24
Yellowfin Tuna	3753	3576		1.19
TOTALS	46560	44862		14.71
OTHER PELAGICS				
Mahimahi	750	622		0.24
Moonfish	136	39		0.04
Oilfish	2345	34		0.74
Pomfret	198	24		0.06
Wahoo	5894	5448		1.86
TOTALS	9323	6167		2.95
NON-PMUS				
Other Pelagic Fish	269	10		0.09
TOTALS	269	10		0.09

Figure 1. American Samoa Longline Vessels Submitting Logs by Quarter for



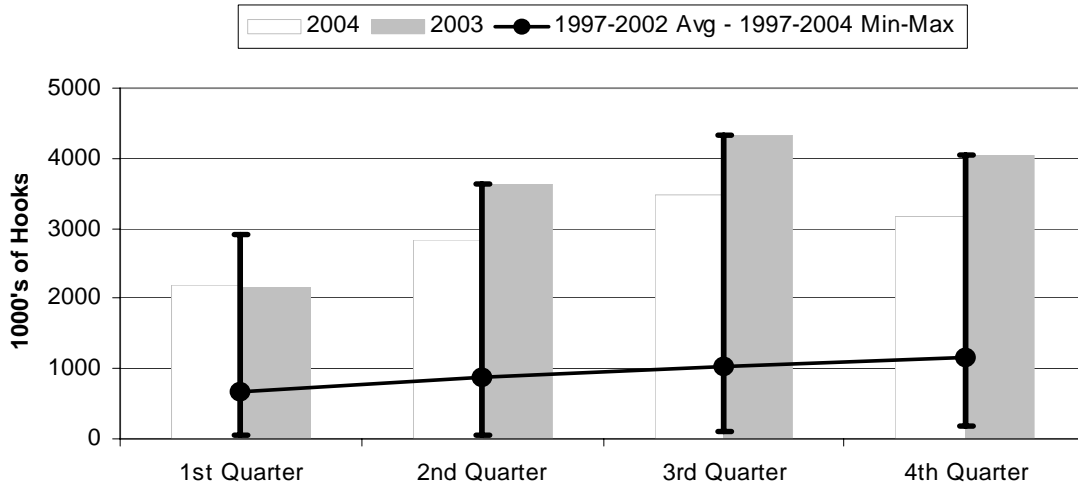
	1st Quarter	2nd Quarter	3rd Quarter	4th Quarter
2004	30	29	37	31
2003	34	42	47	42
1997-2004 Max	52	50	52	54
1997-2002 Avg	22.7	25.3	29.8	29.0
1997-2004 Min	6	12	15	17

Figure 2. Number of Sets by American Samoa Longline Vessels by Quarter for



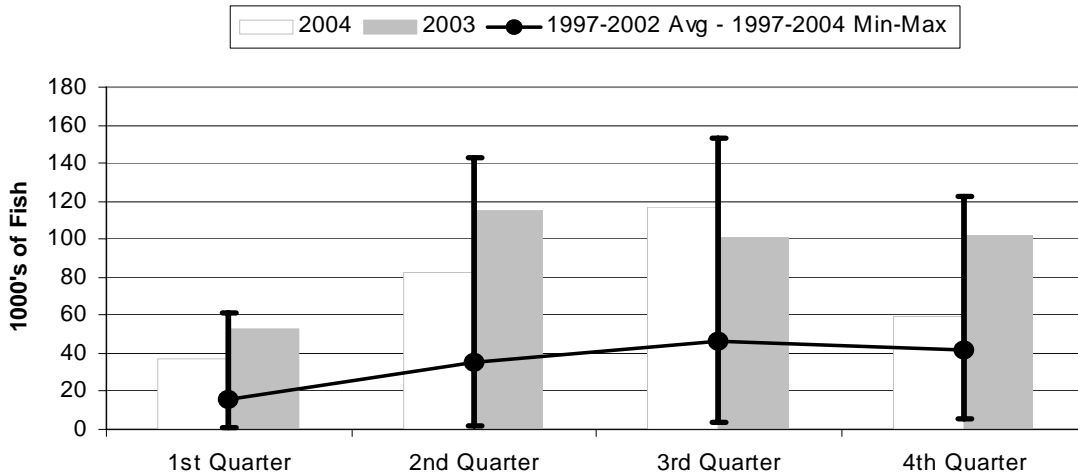
	1st Quarter	2nd Quarter	3rd Quarter	4th Quarter
2004	894	1158	1474	1297
2003	1018	1541	1903	1758
1997-2004 Max	1602	1886	1903	1758
1997-2002 Avg	635	767	944	971
1997-2004 Min	192	223	424	402

Figure 3. Number of Hooks Set by the American Samoa Longline Fleet by Quarter for



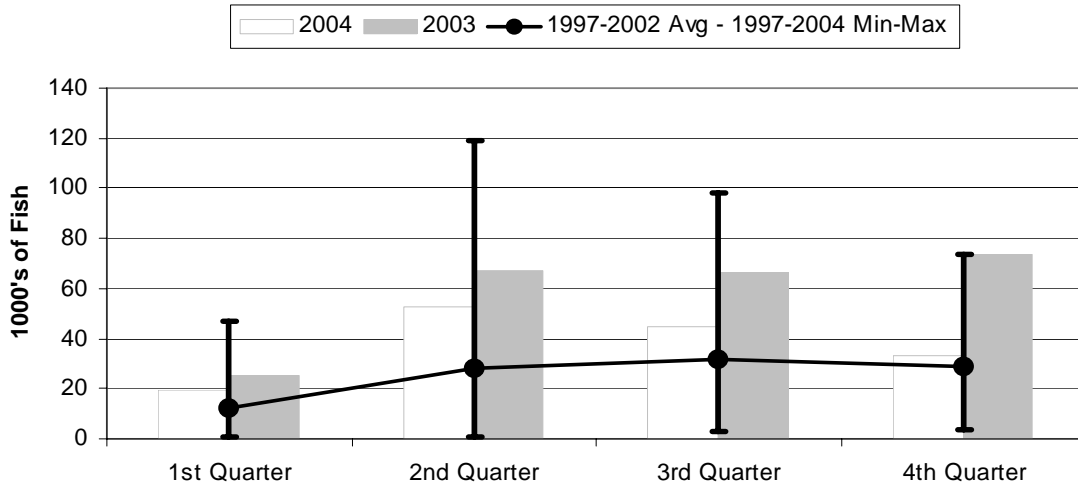
	1st Quarter	2nd Quarter	3rd Quarter	4th Quarter
2004	2195	2837	3475	3165
2003	2153	3629	4342	4044
1997-2004 Max	2902	3629	4342	4044
1997-2002 Avg	668	872	1032	1151
1997-2004 Min	41	51	102	175

Figure 4. American Samoa Longline Total Catch (All Species) by Quarter for



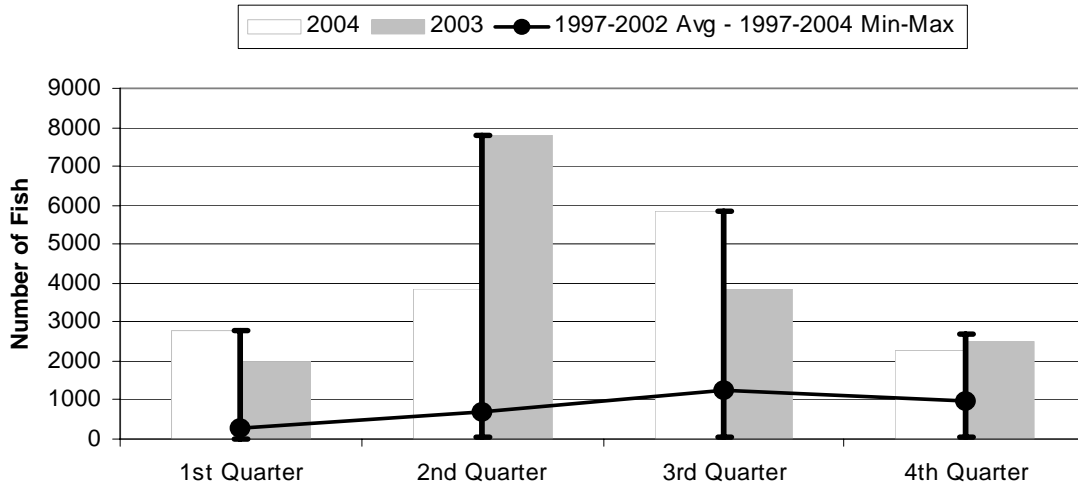
	1st Quarter	2nd Quarter	3rd Quarter	4th Quarter
2004	36.74	82.81	116.57	59.13
2003	52.76	114.75	101.19	101.77
1997-2004 Max	61.24	142.60	153.30	122.34
1997-2002 Avg	15.75	34.86	46.47	41.48
1997-2004 Min	1.32	1.42	4.13	5.20

Figure 5. American Samoa Longline Albacore Catch by Quarter for



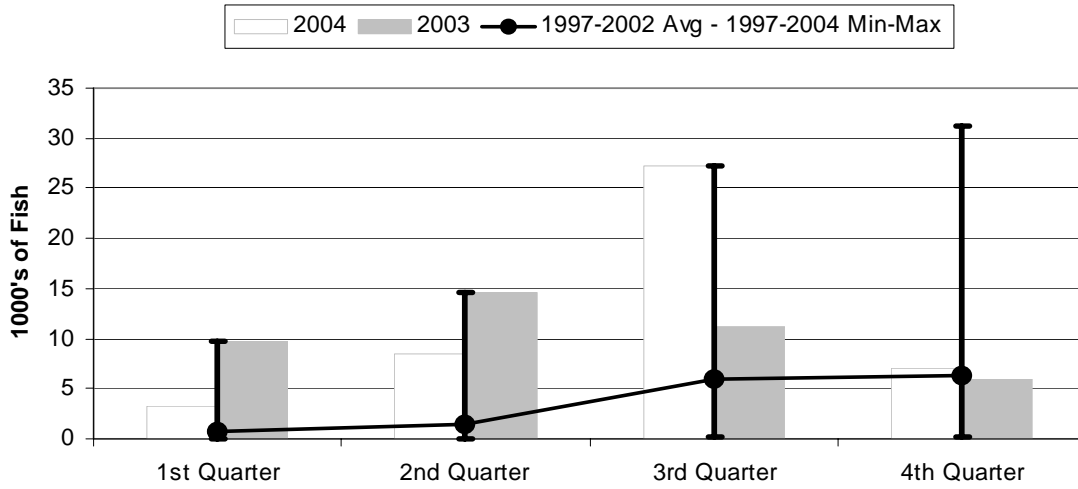
	1st Quarter	2nd Quarter	3rd Quarter	4th Quarter
2004	19.17	52.89	45.03	33.45
2003	25.22	67.35	66.10	73.77
1997-2004 Max	46.98	118.99	98.09	73.77
1997-2002 Avg	11.92	27.88	32.04	28.51
1997-2004 Min	0.94	0.85	3.18	3.47

Figure 6. American Samoa Longline Bigeye Tuna Catch by Quarter for



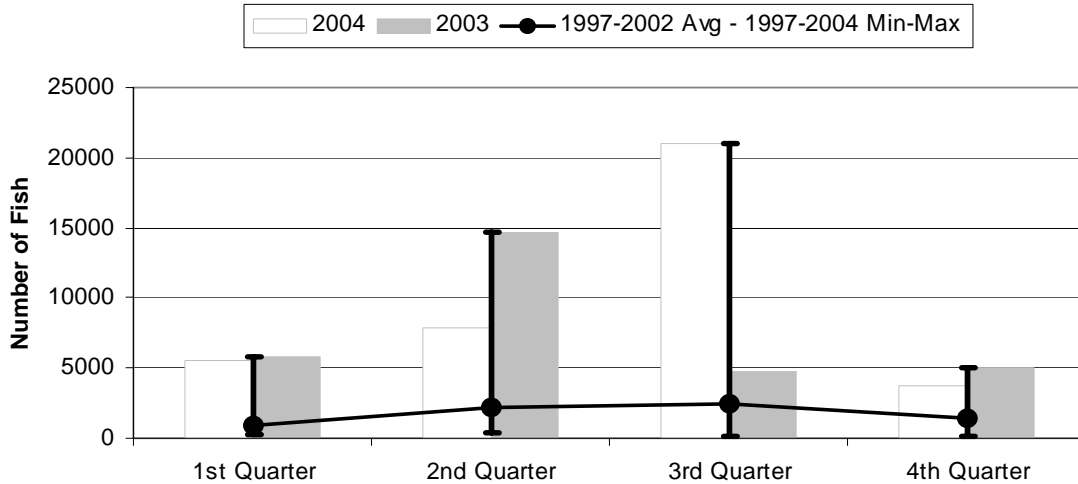
	1st Quarter	2nd Quarter	3rd Quarter	4th Quarter
2004	2781	3833	5834	2270
2003	1993	7785	3853	2500
1997-2004 Max	2781	7785	5834	2678
1997-2002 Avg	299	675	1235	967
1997-2004 Min	6	26	55	55

Figure 7. American Samoa Longline Skipjack Tuna Catch by Quarter for



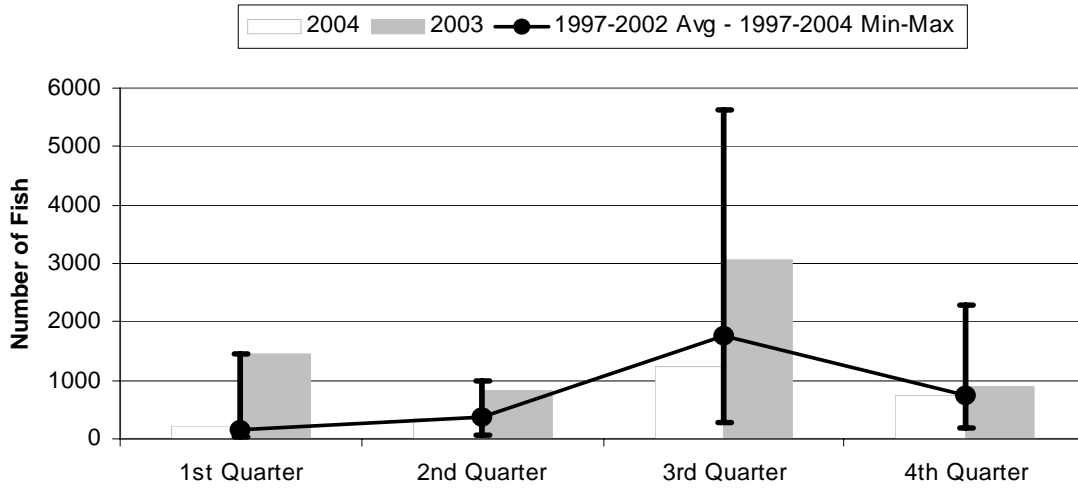
	1st Quarter	2nd Quarter	3rd Quarter	4th Quarter
2004	3.16	8.40	27.23	7.08
2003	9.81	14.61	11.10	6.01
1997-2004 Max	9.81	14.61	27.23	31.19
1997-2002 Avg	0.79	1.40	6.03	6.23
1997-2004 Min	0.00	0.01	0.24	0.18

Figure 8. American Samoa Longline Yellowfin Tuna Catch by Quarter for



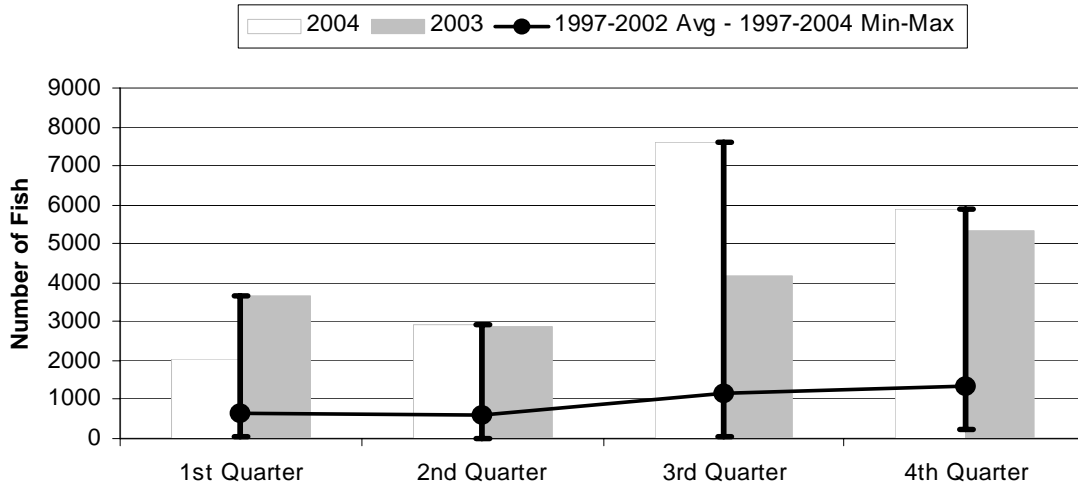
	1st Quarter	2nd Quarter	3rd Quarter	4th Quarter
2004	5491	7812	20993	3753
2003	5848	14681	4813	5078
1997-2004 Max	5848	14681	20993	5078
1997-2002 Avg	894	2234	2385	1428
1997-2004 Min	213	356	84	177

Figure 9. American Samoa Mahimahi Catch by Quarter for



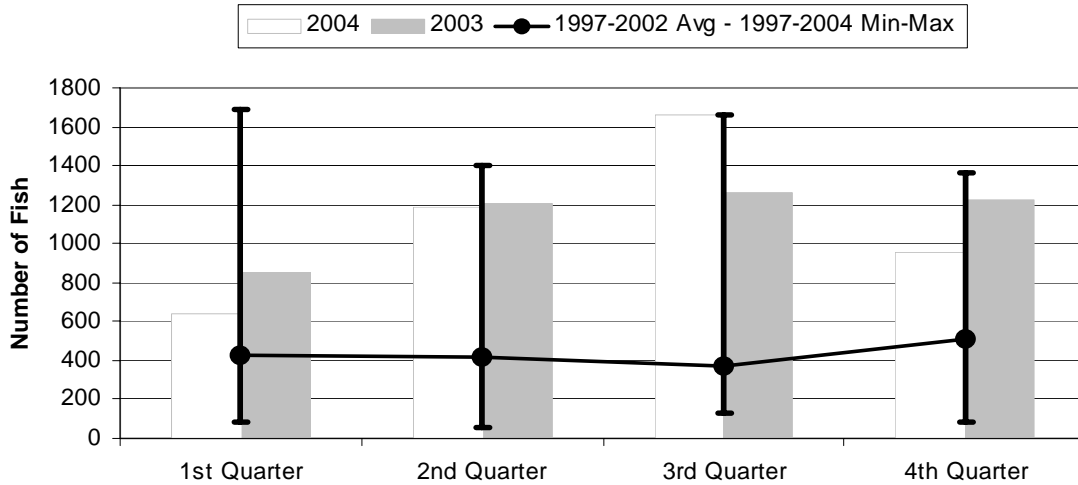
	1st Quarter	2nd Quarter	3rd Quarter	4th Quarter
2004	214	348	1240	750
2003	1455	847	3076	886
1997-2004 Max	1455	979	5642	2297
1997-2002 Avg	161	384	1763	754
1997-2004 Min	30	59	280	181

Figure 10. American Samoa Wahoo Catch by Quarter for



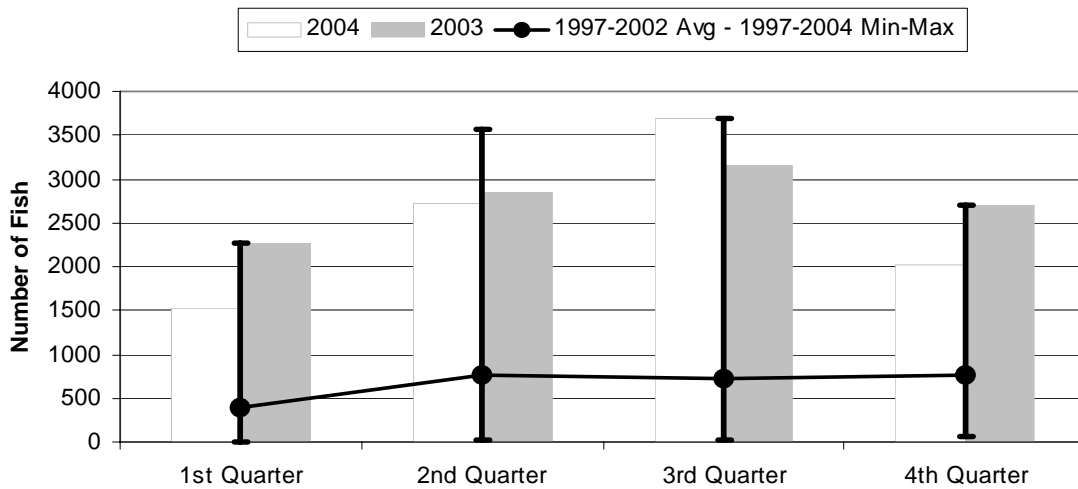
	1st Quarter	2nd Quarter	3rd Quarter	4th Quarter
2004	2024	2921	7629	5894
2003	3681	2865	4172	5333
1997-2004 Max	3681	2921	7629	5894
1997-2002 Avg	652	615	1165	1331
1997-2004 Min	27	20	68	209

Figure 11. American Samoa Billfish Catch by Quarter for



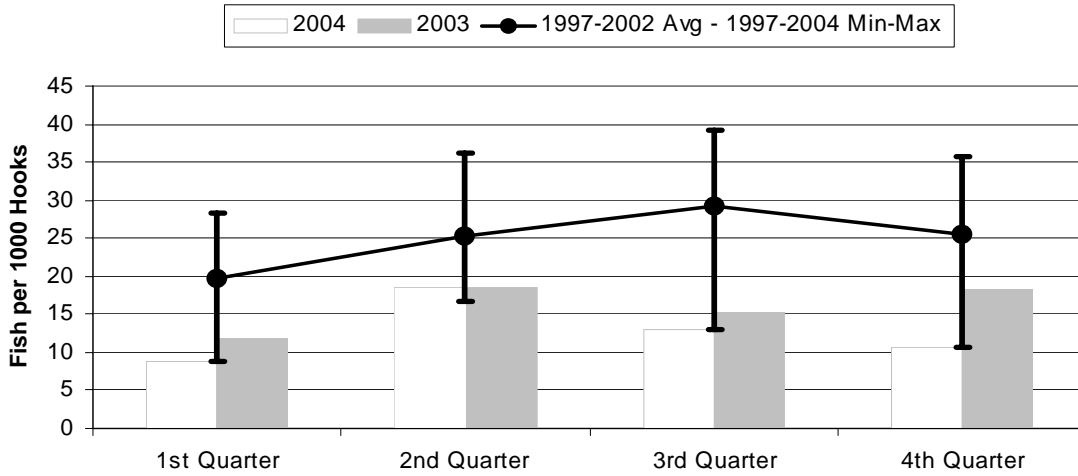
	1st Quarter	2nd Quarter	3rd Quarter	4th Quarter
2004	636	1186	1663	956
2003	852	1207	1263	1221
1997-2004 Max	1692	1404	1663	1361
1997-2002 Avg	431	421	372	510
1997-2004 Min	83	58	132	84

Figure 12. American Samoa Shark Catch by Quarter for



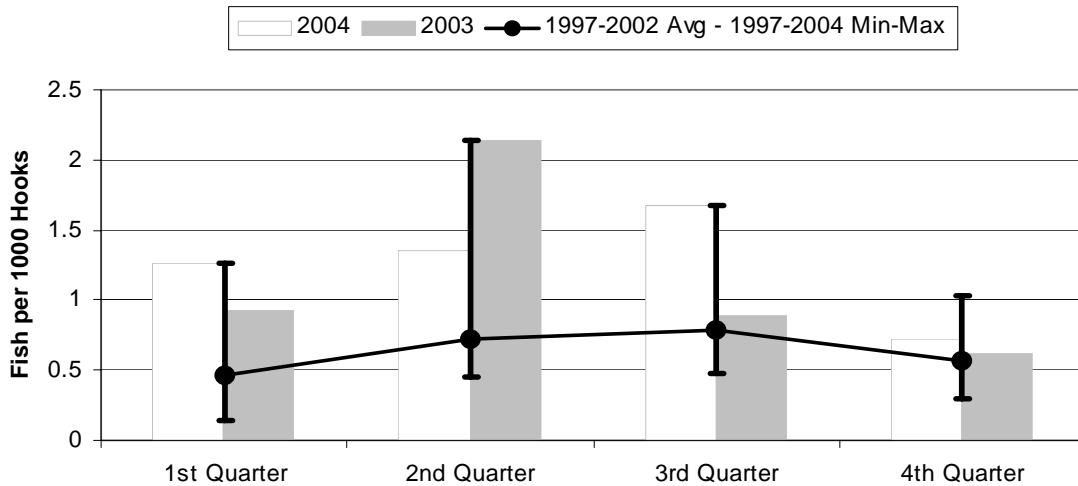
	1st Quarter	2nd Quarter	3rd Quarter	4th Quarter
2004	1522	2729	3686	2017
2003	2262	2855	3156	2695
1997-2004 Max	2262	3562	3686	2695
1997-2002 Avg	392	763	718	753
1997-2004 Min	5	16	26	59

Figure 13. American Samoa Longline Albacore Catch/1000 Hooks by Quarter for



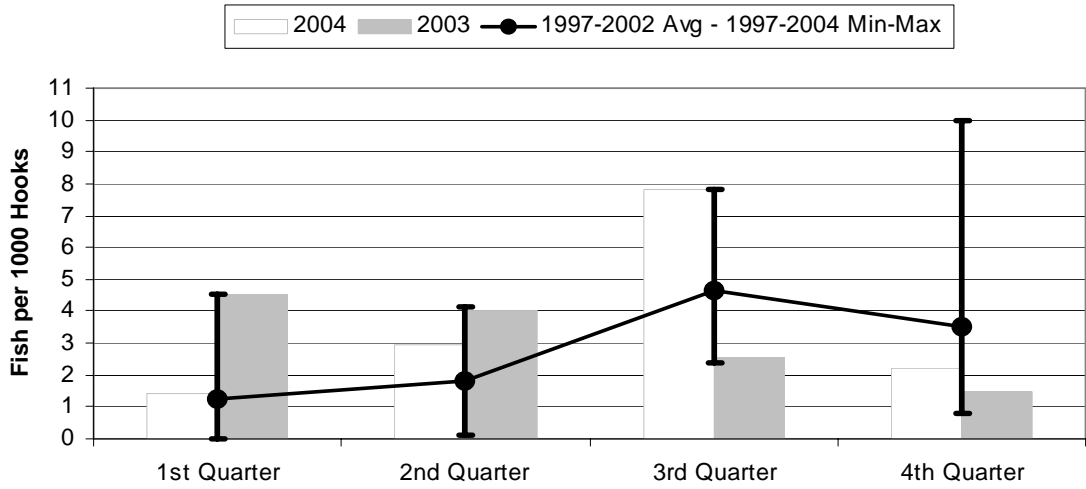
	1st Quarter	2nd Quarter	3rd Quarter	4th Quarter
2004	8.73	18.64	12.96	10.57
2003	11.72	18.56	15.22	18.24
1997-2004 Max	28.33	36.18	39.13	35.68
1997-2002 Avg	19.72	25.31	29.12	25.44
1997-2004 Min	8.73	16.77	12.96	10.57

Figure 14. American Samoa Longline Bigeye Tuna Catch/1000 Hooks by Quarter for



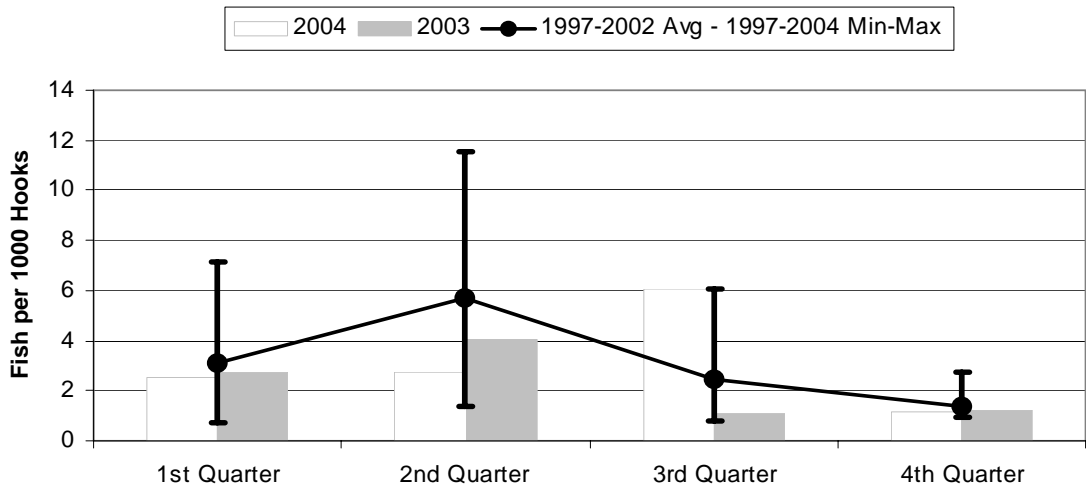
	1st Quarter	2nd Quarter	3rd Quarter	4th Quarter
2004	1.267	1.351	1.679	0.717
2003	0.926	2.145	0.887	0.618
1997-2004 Max	1.267	2.145	1.679	1.030
1997-2002 Avg	0.461	0.721	0.792	0.571
1997-2004 Min	0.146	0.452	0.479	0.294

Figure 15. American Samoa Longline Skipjack Tuna Catch/1000 Hooks by Quarter for



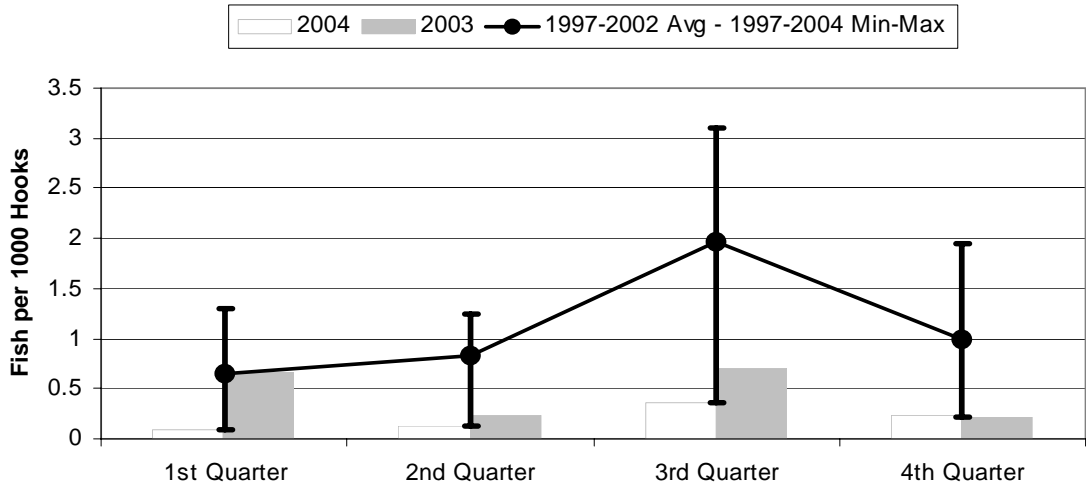
	1st Quarter	2nd Quarter	3rd Quarter	4th Quarter
2004	1.440	2.960	7.838	2.236
2003	4.556	4.025	2.557	1.485
1997-2004 Max	4.556	4.155	7.838	9.975
1997-2002 Avg	1.225	1.833	4.655	3.543
1997-2004 Min	0.000	0.118	2.399	0.781

Figure 16. American Samoa Yellowfin Tuna Catch/1000 Hooks by Quarter for



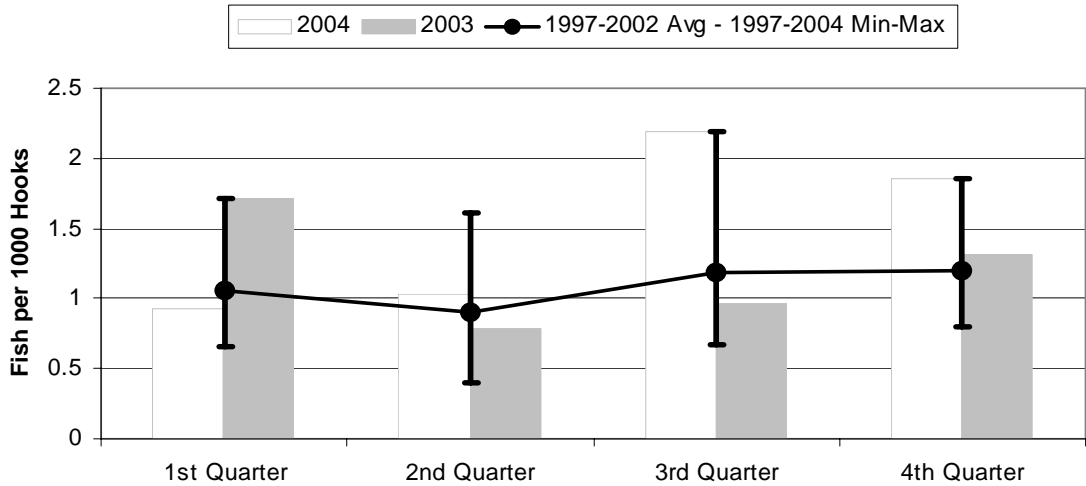
	1st Quarter	2nd Quarter	3rd Quarter	4th Quarter
2004	2.502	2.754	6.042	1.186
2003	2.716	4.046	1.108	1.256
1997-2002 Avg	3.099	5.728	2.421	1.396
1997-2004 Max	7.139	11.57	6.042	2.759
1997-2004 Min	0.695	1.395	0.826	0.968

Figure 17. American Samoa Longline Mahimahi Catch/1000 Hooks by Quarter for



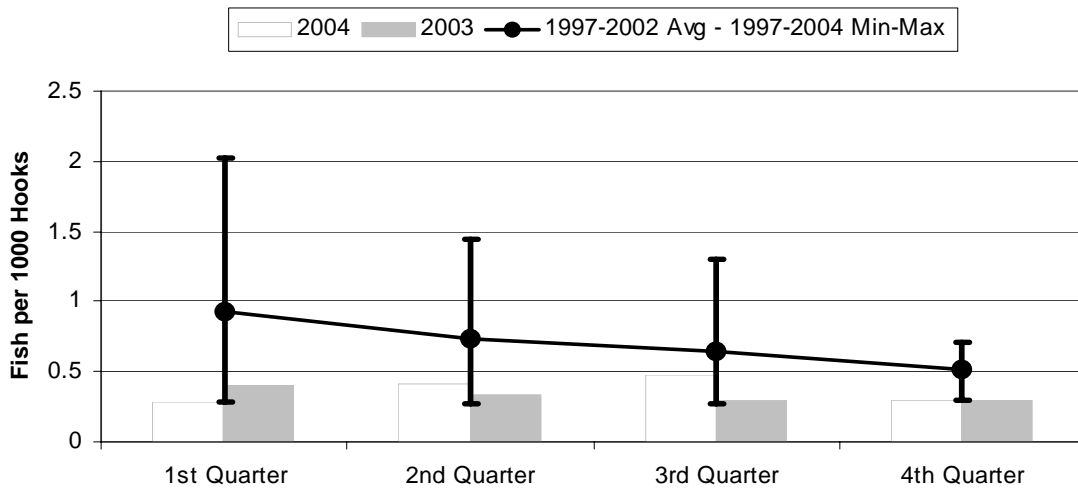
	1st Quarter	2nd Quarter	3rd Quarter	4th Quarter
2004	0.098	0.123	0.357	0.237
2003	0.676	0.233	0.708	0.219
1997-2004 Max	1.305	1.248	3.106	1.940
1997-2002 Avg	0.647	0.834	1.969	1.000
1997-2004 Min	0.091	0.123	0.357	0.219

Figure 18. American Samoa Wahoo Catch/1000 Hooks by Quarter for



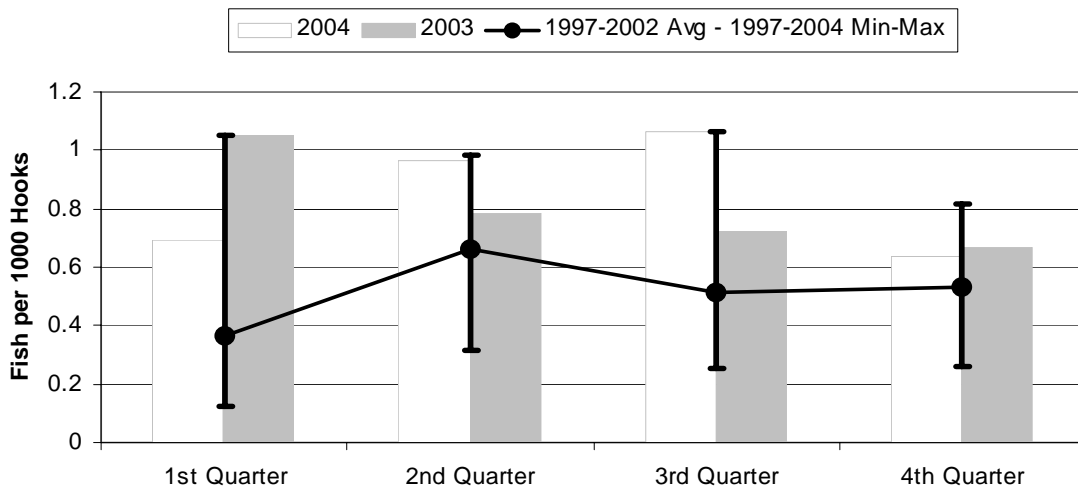
	1st Quarter	2nd Quarter	3rd Quarter	4th Quarter
2004	0.922	1.030	2.196	1.862
2003	1.710	0.790	0.961	1.319
1997-2004 Max	1.710	1.617	2.196	1.862
1997-2002 Avg	1.053	0.908	1.181	1.202
1997-2004 Min	0.657	0.394	0.669	0.803

Figure 19. American Samoa Billfish Catch/1000 Hooks by Quarter for



	1st Quarter	2nd Quarter	3rd Quarter	4th Quarter
2004	0.290	0.418	0.479	0.302
2003	0.396	0.333	0.291	0.302
1997-2004 Max	2.019	1.439	1.298	0.713
1997-2002 Avg	0.931	0.740	0.650	0.519
1997-2004 Min	0.290	0.268	0.271	0.302

Figure 20. American Samoa Shark Catch/1000 Hooks by Quarter for



	1st Quarter	2nd Quarter	3rd Quarter	4th Quarter
2004	0.694	0.962	1.061	0.637
2003	1.051	0.787	0.727	0.666
1997-2004 Max	1.051	0.986	1.061	0.819
1997-2002 Avg	0.364	0.663	0.515	0.532
1997-2004 Min	0.122	0.315	0.256	0.259