

Department of Marine & Wildlife Resources
Report on the NMFS Logbook Program for the
American Samoa Longline Fishery
Calendar Year 2003

March 5, 2004

The Department of Marine and Wildlife Resources (DMWR) began processing the longline logbook data locally at the beginning of the year 2000. Logbook data is summarized by date of haul as shown by the table below. All submitted logbook data for longline activities during 2003 have been processed and are reported in this preliminary report. However as of March 5, 2004, the documented delinquency rate according to the DMWR Daily Effort Census and Delinquency Reporting System for 2003 was 16.95%. Therefore, the data in this report are preliminary and are from the logs submitted to DMWR as of March 5, 2004.

According to the Daily Effort Census 57 vessels were engaged in longline fishing during 2003. Of these, 50 vessels turned in longline logs for sets made during the year as shown by Figure 1. The 7 delinquent vessels were all alias, some located in remote villages outside the normal sampling area, and all had relatively minor catch and effort during the year according to cross-checks into the cannery landings database. The logbooks submitted by the 50 vessels indicated they made 5,944 sets and set 13,847,445 hooks. Even though the number of vessels turning in logs is down from last year (60), the number of sets is down by 13.4% but the number of hooks per set is up by 22.2% and the total number of hooks is up by 5.9% due to the increasing proportion of large vessels in the fleet.

The total catches decreased by 24.2 % (from 478,900 on 2002 to 363,063 fishes this year). Albacore continued to dominate the catch with 227,080 fish caught in 2003 as shown by figure 4. This is a 31.8% decrease over the record catch of last year. Catches of skipjack tuna decrease by 36.6% from previous year (from 64,316 fishes caught on 2002 to 40,771 fishes caught this year), catches of mahimahi decrease by 33.4% from previous year (from 9,171 fishes caught on 2002 to 6,106 fishes caught this year) and catches of billfishes decreased by 16.8% (from 5,384 fishes caught on 2002 to 4,477 fishes caught this year). At the opposite, bigeye tuna catches increased by 36.5% (from 11,735 fishes caught on 2002 to 16,016 fishes caught this year), yellowfin tuna catches increased by 54.2% (from 19,476 fishes caught on 2002 to 30,025 fishes caught this year) and wahoo catches increased by 12.8 % (from 13,928 fishes caught on 2002 to 15,716 fishes caught this year). The catches of sharks remained approximately the same (+2.6%, from 10,511 fishes caught on 2002 to 10,789 fishes caught this year) (see figure 5).

Total CPUE has decreased by 28.4 % (from 36.62 fishes/1000 hooks on 2002 to 26.22 fishes/1000 hooks caught this year). Albacore CPUE decreased 35.6% to 16.40 fish per 1000 hooks in 2003 compared to a CPUE of 25.48 in 2002 as shown by Figure 7. The CPUE for skipjack tuna decreased by 40.1% (from 4.92 to 2.94 fishes/1000 hooks), the CPUE for mahimahi decreased by 37.1% (from 0.70 to 0.44 fishes/1000 hooks), the CPUE for billfishes decreased by 21.5 % (from 0.41 to 0.32 fishes/1000 hooks) and the shark CPUE remain about the same with a light decreased of 3.1% (from 0.80 to 0.78 fishes/1000 hooks). Yellowfin CPUE increased by 45.6% (from 1.49 to 2.17 fishes/1000 hooks) and bigeye tuna CPUE increased by 28.9% (from 0.90 to 1.16 fishes/1000 hooks). The CPUE for Wahoo has a light increase of 6.6 % (from 1.07 to 1.13 fishes/1000 hooks) as shown by figure 9.

Western Pacific Logbook Summary Report for Calendar Year 2003

Vessels landing or based in American Samoa
Based on Date of Haul for all areas

TRIP INFORMATION

Number of Vessels:	50
Number of Sets:	5944
1000's of Hooks Set:	13847
Number of Lightsticks Used:	4213

CATCH INFORMATION

Species	# Caught	# Kept	# Finned	# Caught/ 1000 Hooks
BILLFISH				
Black marlin	33	3		0.00
Blue marlin	2750	224		0.20
Striped Marlin	290	82		0.02
Sailfish	535	60		0.04
Spearfish	440	111		0.03
Swordfish	429	239		0.03
TOTALS	4477	719		0.32
SHARKS				
Blue shark	7734	89		0.56
Mako Shark	342	4		0.02
Thresher Shark	385	11		0.03
White-Tip Shark	1940	30		0.14
Other Sharks	388	3		0.03
TOTALS	10789	137		0.78
TUNA				
Albacore	227080	227030		16.40
Bigeye Tuna	16016	14783		1.16
Bluefin Tuna	90	83		0.01
Skipjack Tuna	40771	29264		2.94
Yellowfin Tuna	30025	28522		2.17
TOTALS	313982	299682		22.67
OTHER PELAGICS				
Mahimahi	6106	3807		0.44
Moonfish	952	184		0.07
Oilfish	7267	102		0.52
Pomfret	1167	263		0.08
Wahoo	15716	13945		1.13
TOTALS	31208	18301		2.25
NON-PMUS				
Other Pelagic Fish	2607	34		0.19
TOTALS	2607	34		0.19

Figure 1. American Samoa Longline Vessels by Year

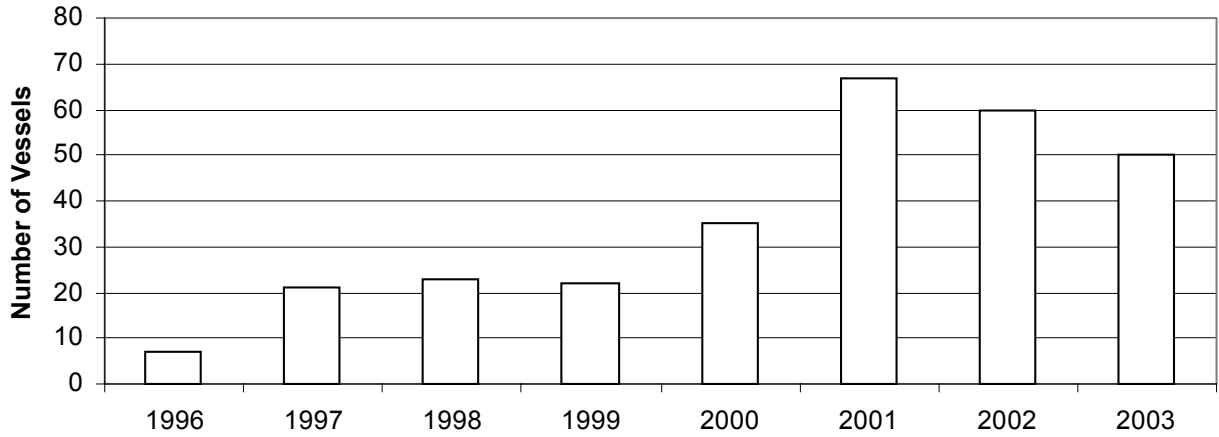


Figure 2. Number of Sets by American Samoa Longline Vessels by Year

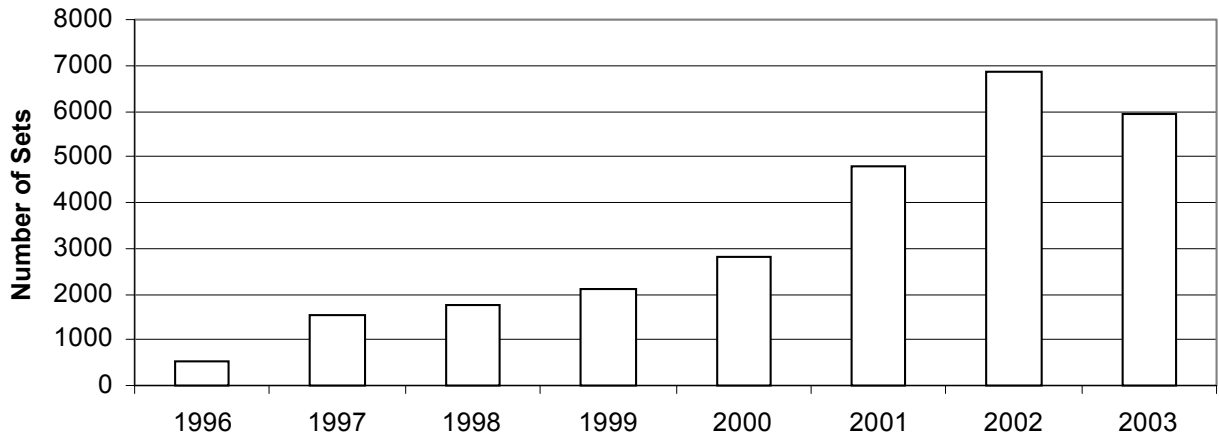


Figure 3. Number of Hooks Set by the American Samoa Longline Fleet by Year

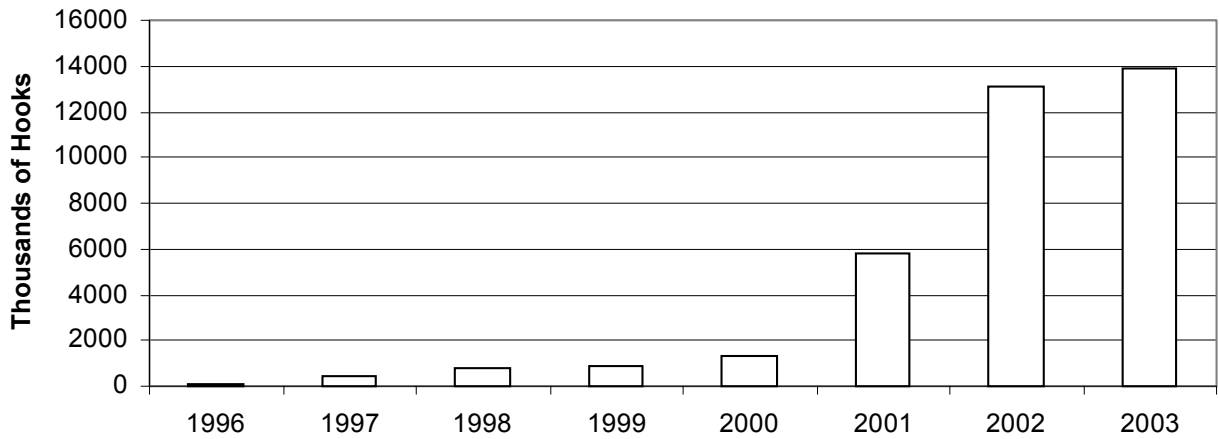


Figure 4. American Samoa Longline Albacore Catch by Year

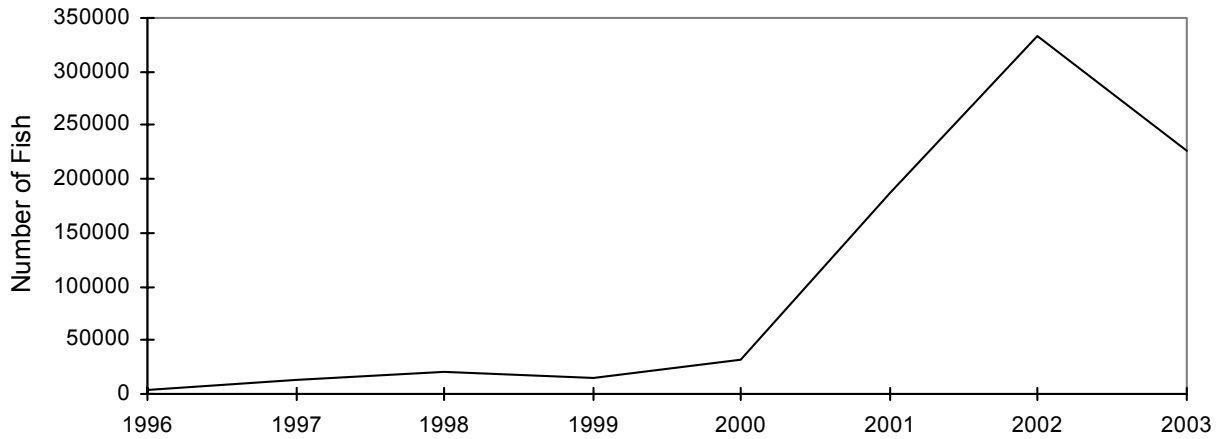


Figure 5. American Samoa Longline Tuna Catch by Year

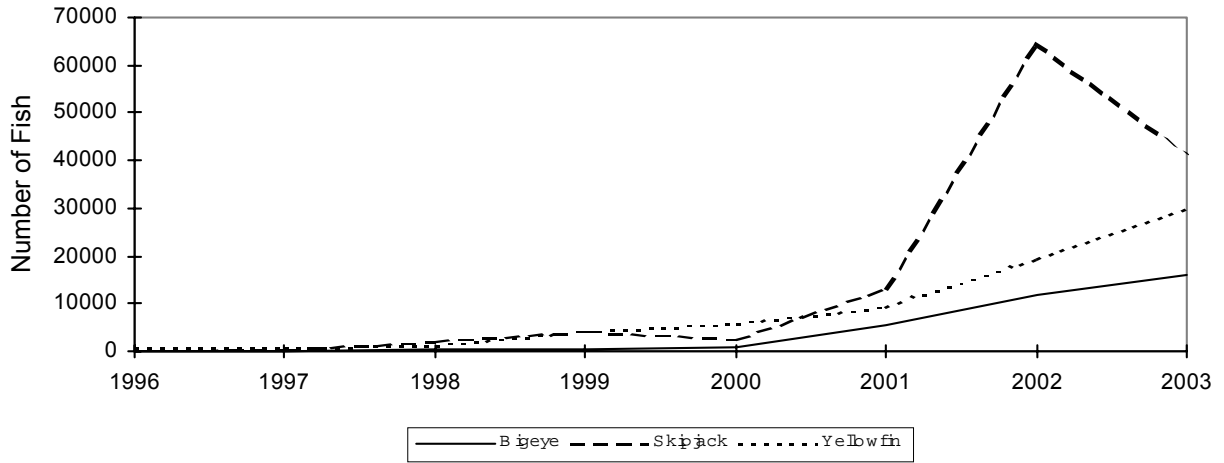


Figure 6. American Samoa Longline Catch of Miscellaneous Pelagic Fish by Year

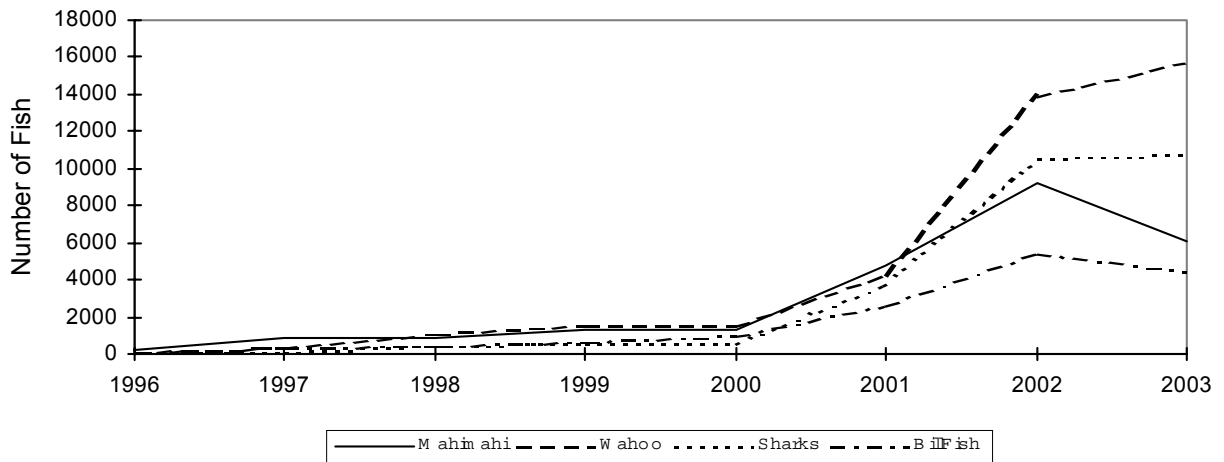


Figure 7. American Samoa Longline Albacore Catch per 1000 Hooks by Year

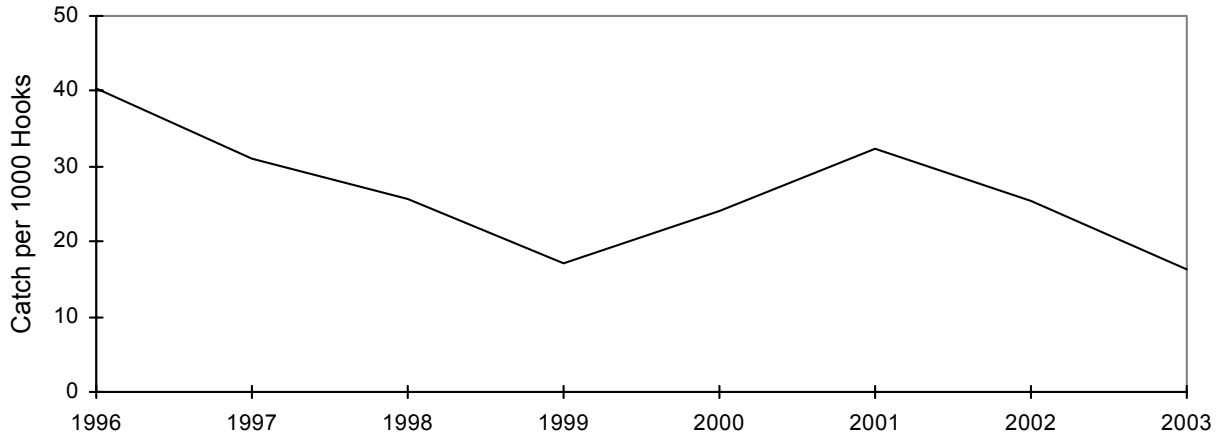


Figure 8. American Samoa Longline Tuna Catch per 1000 Hooks by Year

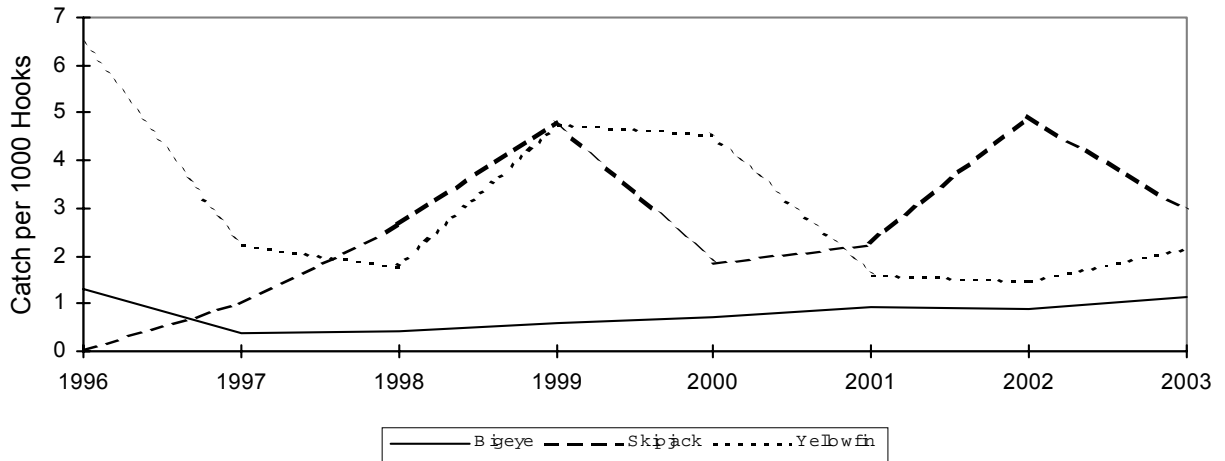


Figure 9. American Samoa Longline Catch of Other Pelagic Fish per 1000 Hooks by Year

