

Department of Marine & Wildlife Resources
Report on the NMFS Logbook Program for the
American Samoa Longline Fishery
Calendar Year 2006

March 14, 2007

The Department of Marine and Wildlife Resources (DMWR) began processing the longline logbook data locally at the beginning of the year 2000. Logbook data are summarized by date of haul as shown by the table below. All submitted logbook data for longline activities during 2006 have been processed and are reported in this preliminary report. However as of March 14, 2007, the documented delinquency rate according to the DMWR Daily Effort Census and Delinquency Reporting System for 2006 was 3.24%. Therefore, the data in this report are preliminary and are from the logs submitted to DMWR as of March 14, 2007.

According to the Daily Effort Census 36 vessels were engaged in longline fishing during 2006. Of these 29 vessels turned in longline logs for sets made during the year as shown by Figure 1. The 7 delinquent vessels were all alias, some located in remote villages outside the normal sampling area, and all had relatively minor catch and effort during the year according to cross-checks into the cannery landings database. The logbooks submitted by the 29 vessels indicated they made 4,985 sets and set 14,132,109 hooks. Even though the number of vessels turning in logs is down from 36 last year, the number of sets is up by 15% and the number of hooks set is up by 27% , almost equaling the record set in 2003, due to the increasing proportion of large vessels in the fleet.

Albacore continued to dominate the catch with 261,227 fish caught in 2006 as shown by figure 4. This is a 36% increase over last year's catch. Catches of skipjack tuna experienced a 52% increase from last year, while catches of yellowfin tuna decreased by 27% and bigeye tuna catches increased by 35%. Catches for billfishes, increased by 93%, catches of mahimahi increased by 43%, catches of wahoo increased by 35% while catches of sharks increased by 2% compared to the 2005 values.

Albacore Catch/1000 Hooks increased 6% to 18.38 fish per 1000 hooks in 2006 compared to a Catch/1000 Hooks of 17.32 for 2005 as shown by Figure 7. The Catch/1000 Hooks for skipjack tuna increased by 19%, the Catch/1000 Hooks increased by 6% for bigeye tuna while the Catch/1000 Hooks for yellowfin tuna decreased by 42%. The Catch/1000 Hooks of Mahimahi increased by 15%, the Catch/1000 Hooks of Wahoo increased by 6% and the Catch/1000 Hooks of Billfish increased by 52% while the Catch/1000 Hooks of Sharks decreased by 20%

Western Pacific Logbook Summary Report for Calendar Year 2006

Vessels landing or based in American Samoa
Based on Date of Haul for all areas

TRIP INFORMATION

Number of Vessels: 29
Number of Sets: 4985
1000's of Hooks Set: 14132
Number of Lightsticks Used: 22397

CATCH INFORMATION

| Species | # Caught | # Kept | # Finned | # Caught/ 1000 Hooks |
|-------------------------|---------------|---------------|----------|-------------------------|
| BILLFISH | | | | |
| Black marlin | 5 | 1 | | 0.00 |
| Blue marlin | 2621 | 395 | | 0.19 |
| Striped Marlin | 468 | 129 | | 0.03 |
| Sailfish | 798 | 173 | | 0.06 |
| Spearfish | 1285 | 110 | | 0.09 |
| Swordfish | 1105 | 938 | | 0.08 |
| TOTALS | 6282 | 1746 | | 0.44 |
| SHARKS | | | | |
| Blue shark | 5181 | 12 | | 0.37 |
| Shortfin Mako Shark | 304 | 19 | | 0.02 |
| Thresher Shark | 320 | 0 | | 0.02 |
| White Tip Oceanic Shark | 1266 | 2 | | 0.09 |
| Other Sharks | 397 | 2 | | 0.03 |
| TOTALS | 7468 | 35 | | 0.53 |
| TUNA | | | | |
| Albacore | 261227 | 261087 | | 18.48 |
| Bigeye Tuna | 13164 | 12055 | | 0.93 |
| Bluefin Tuna | 36 | 32 | | 0.00 |
| Skipjack Tuna | 45778 | 35546 | | 3.24 |
| Yellowfin Tuna | 22014 | 21385 | | 1.56 |
| TOTALS | 342219 | 330105 | | 24.22 |
| OTHER PELAGICS | | | | |
| Mahimahi | 5169 | 2462 | | 0.37 |
| Moonfish | 684 | 194 | | 0.05 |
| Oilfish | 6490 | 158 | | 0.46 |
| Pomfret | 641 | 130 | | 0.05 |
| Wahoo | 21244 | 19401 | | 1.50 |
| TOTALS | 34228 | 22345 | | 2.42 |
| NON-PMUS | | | | |
| Other Pelagic Fish | 369 | 33 | | 0.03 |

Figure 1. American Samoa Longline Vessels by Year

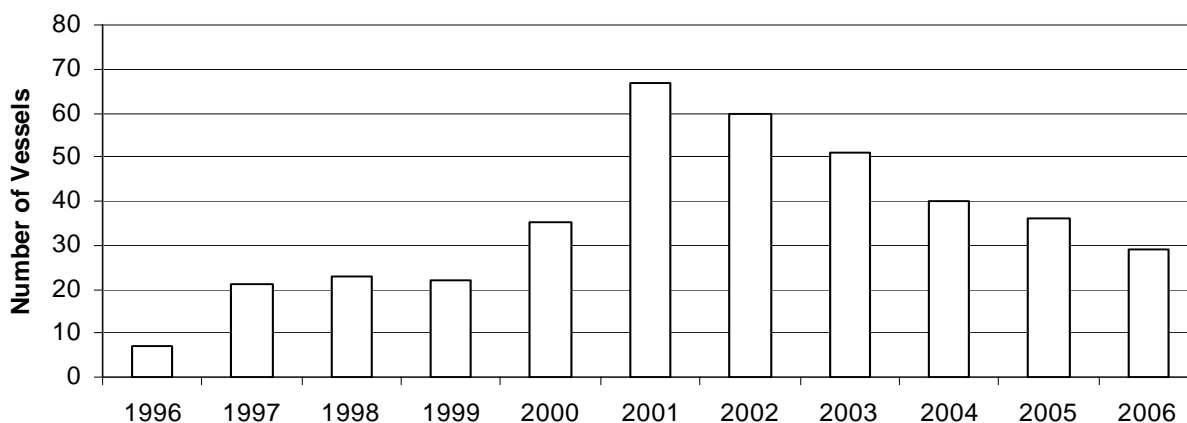


Figure 2. Number of Sets by American Samoa Longline Vessels by Year

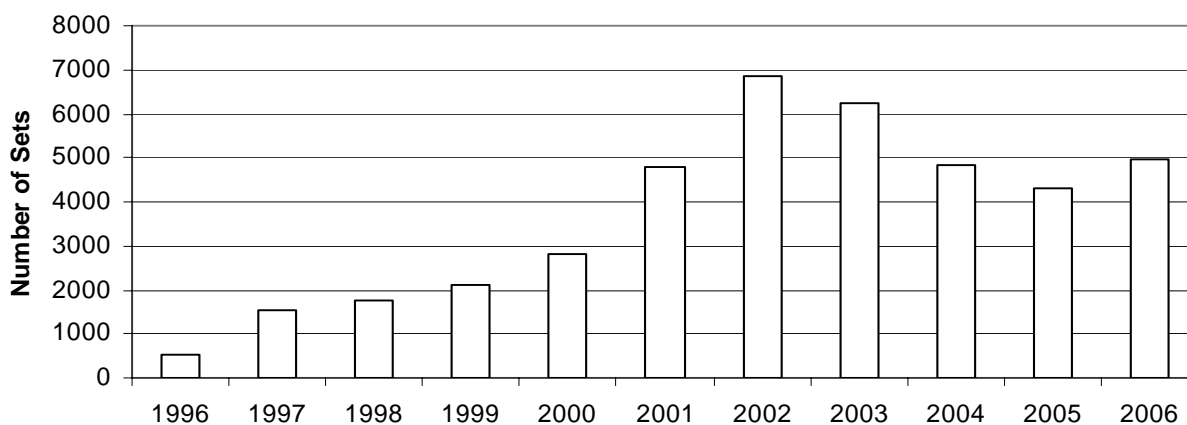


Figure 3. Number of Hooks Set by the American Samoa Longline Fleet by Year

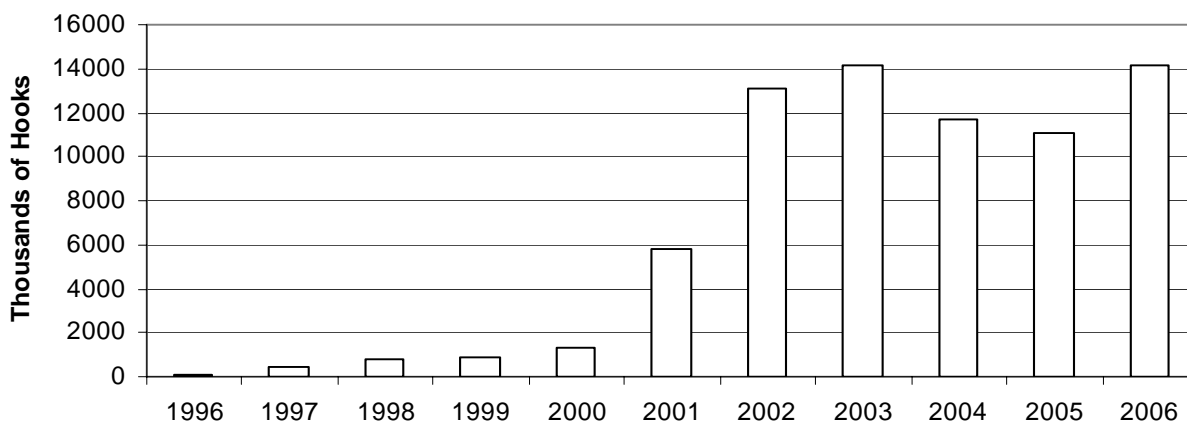


Figure 4. American Samoa Longline Albacore Catch by Year

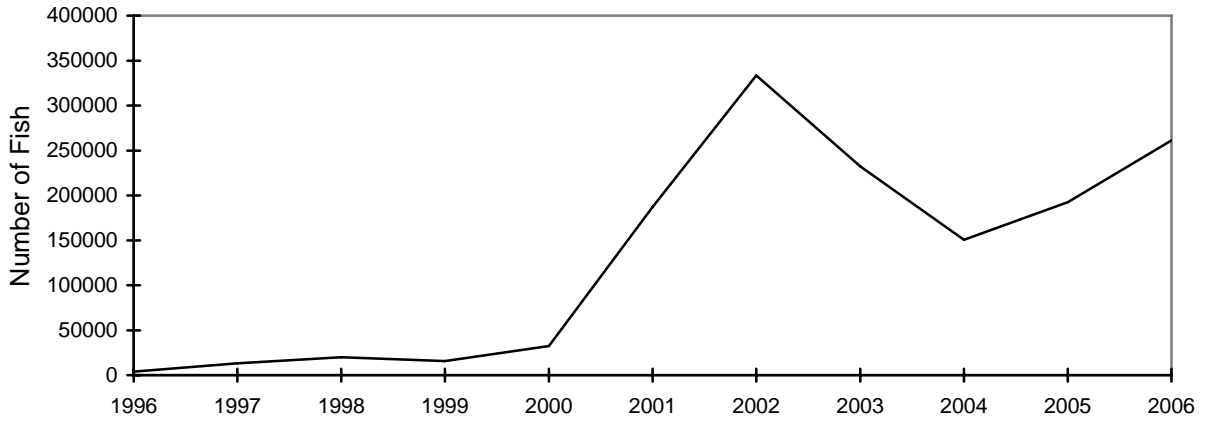


Figure 5. American Samoa Longline Tuna Catch by Year

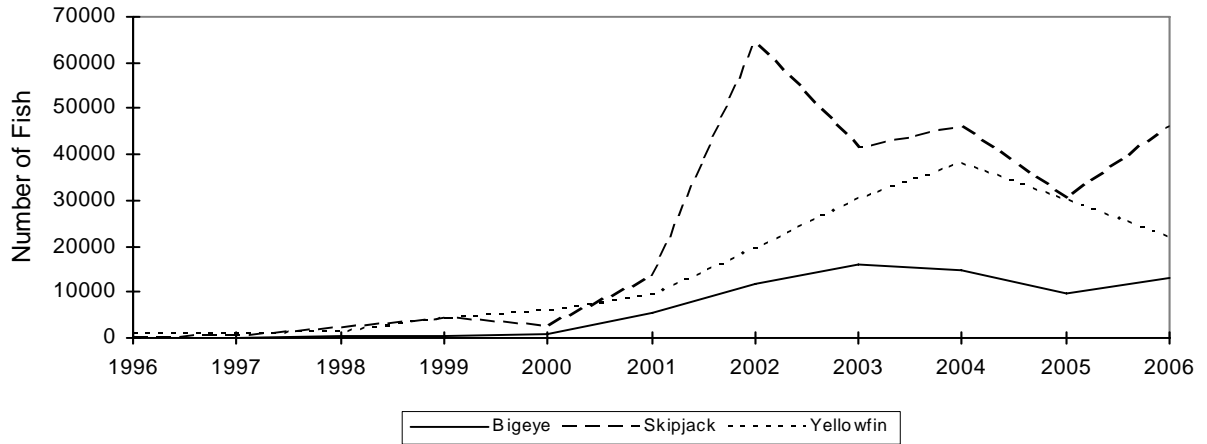


Figure 6. American Samoa Longline Catch of Miscellaneous Pelagic Fish by Year

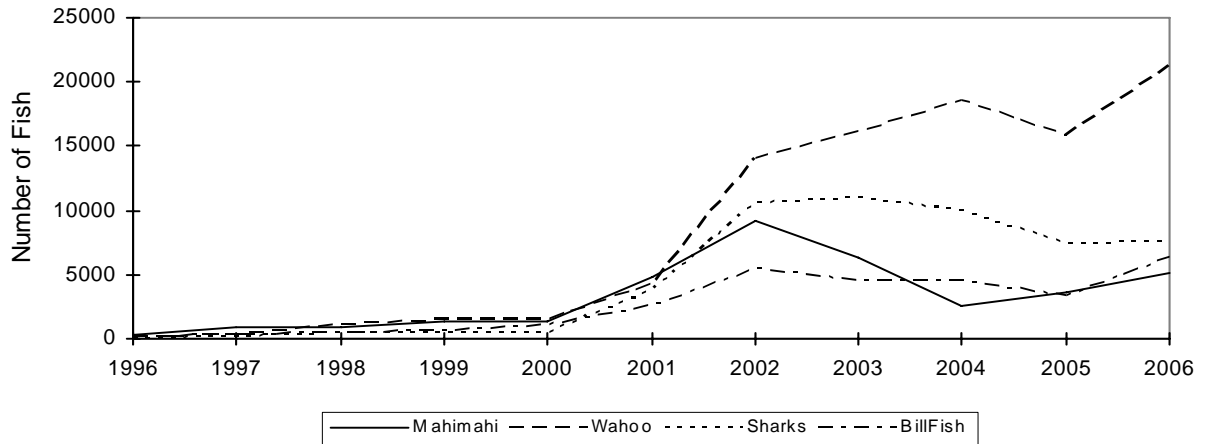


Figure 7. American Samoa Longline Albacore Catch per 1000 Hooks by Year

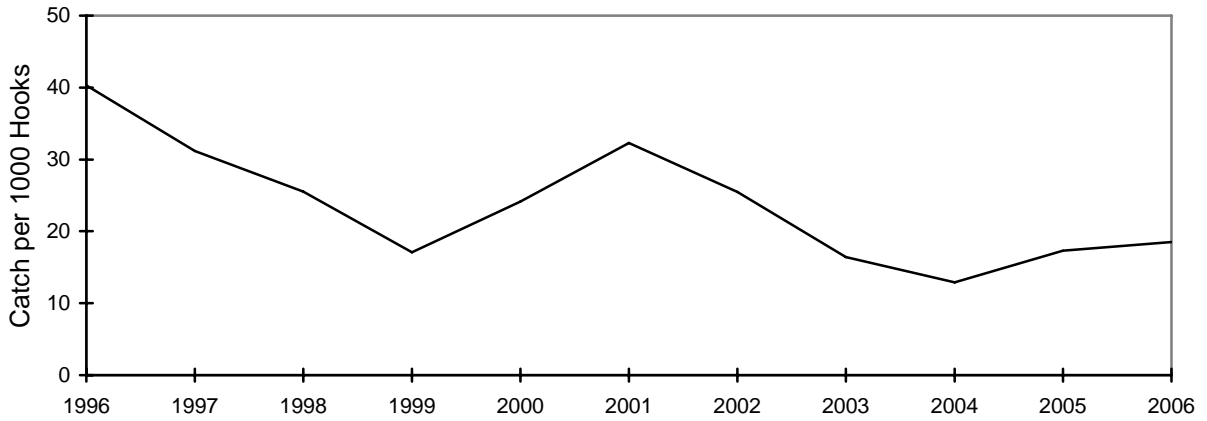


Figure 8. American Samoa Longline Tuna Catch per 1000 Hooks by Year

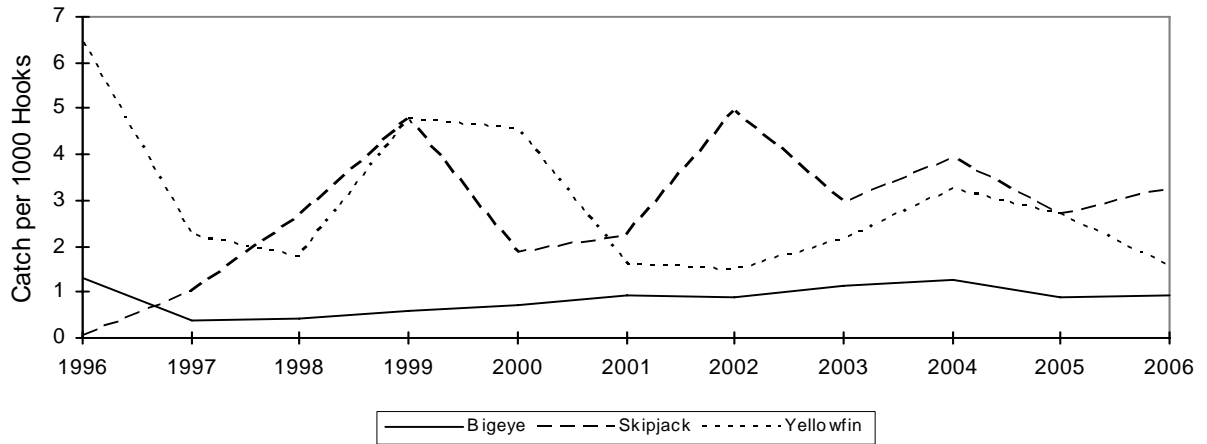


Figure 9. American Samoa Longline Catch of Other Pelagic Fish per 1000 Hooks by Year

