

**The Hawaii-based Longline Logbook Summary Report
July-September 2005¹**

Pacific Islands Fisheries Science Center
Fishery Monitoring and Economics Program

All Federal longline logbook data for trips completed in the third quarter of 2005 by Hawaii-based longline vessels have been received and processed and are summarized in this report. Although most of the data from trips that began late in the third quarter of 2005 and continued into the fourth quarter are included, this report should still be considered preliminary.

Since April 2, 2004, the Hawaii-based longline fishery has operated under rules that have restricted effort, hook, and bait types. A separate limit on sea turtle interactions is in effect for the swordfish fishery. Other mitigation measures, such as dehooking devices, are also required for both the tuna and swordfish components of the Hawaii-based longline fishery.

A total of 112 vessels were active in the fishery during the third quarter of 2005, 1 less than in the same period last year (Fig. 1). There were 382 longline trips in the third quarter of 2005, 16 more than the previous year (Fig. 2). Almost all trips were tuna-targeted (378 trips). The total number of hooks set in this quarter was a record 8.2 million, an increase of 400,000 hooks from the third quarter of last year (Fig. 3). Seventy-three percent of the hooks were set outside of the U.S. Exclusive Economic Zone (EEZ). Other effort was recorded in the main Hawaiian Islands (MHI) EEZ (25%), the Northwestern Hawaiian Islands (NWHI) EEZ (1%), and U.S. possessions (1%).

Bigeye tuna catch reached a record 30,771 fish in the third quarter of 2005 (Fig. 4), with 80% caught on the high seas. Bigeye tuna CPUE on tuna-targeted trips was 3.8 fish per 1000 hooks (Fig. 5). Albacore catch and CPUE dropped by 87% (1,144 fish) and 90% (0.1) from the same period of last year, respectively (Figs. 6-7). Yellowfin tuna catch (4,409 fish) and CPUE (0.5) were also below those in the third quarter of last year (Figs. 8-9).

Swordfish catch rose 65% to 1,162 compared to the same period of the previous year, but was still 77% below the long-term catch for the third quarter (Fig. 10). Swordfish-targeted swordfish CPUE was 10.4, while tuna-targeted swordfish CPUE was 0.1 in the third quarter of 2005 (Fig. 11). Striped marlin catch (1,504 fish) and CPUE (0.2) values were close to that of last year (Figs. 12-13). Blue marlin catch and CPUE were 733 and 0.1, respectively (Figs. 14-15).

A total of 13,081 sharks were caught in the third quarter of 2005, of which less than 1% (412) was kept. Blue shark comprised 92% of the total shark catch (12,012 fish) (Fig. 16). Blue shark CPUE on swordfish-targeted trips was 16.3 (Fig. 17).

Table 1.—Western Pacific longline logbook summary for 7/2005 through 9/2005
(Vessels landing or based in Hawaii)
(Date of haul; Area totals; All areas)

Trip information			

Number of vessels		112	
Number of trips		382	
Number of sets		4,107	
Number of hooks set		8,239,610	
Number of light sticks used		24,950	

Species catch information			

Species class			# caught
Species	# kept	# caught	per 1000 hooks

Pelagic Management Unit Species (PMUS)			

Billfish			
Blue Marlin	722	733	0.09
Spearfish	1,305	1,326	0.16
Striped Marlin	1,468	1,504	0.18
Swordfish	972	1,162	0.14
Other	75	76	0.01
Total	4,542	4,801	0.58
Sharks			
Blue	91	12,012	1.46
Mako	261	471	0.06
Thresher	53	346	0.04
Other	7	252	0.03
Total	412	13,081	1.59
Tuna			
Albacore	1,142	1,144	0.14
Bigeye	30,259	30,771	3.73
Bluefin	3	3	0.00
Skipjack	592	617	0.07
Yellowfin	3,926	4,409	0.54
Other	0	0	0.00
Total	35,922	36,944	4.48
Other PMUS			
Mahimahi	10,134	10,293	1.25
Moonfish	6,544	6,592	0.80
Oilfish	2,823	2,878	0.35
Pomfret	10,879	11,021	1.34
Wahoo	3,060	3,077	0.37
Total	33,440	33,861	4.11
Miscellaneous			

Non-PMUS	211	688	0.08

Date and time of summary:

11/28/05 (12:45:46)

Table 2.--Western Pacific longline logbook PSI summary for 7/2005 through 9/2005
 (ALL Vessels landing or based in Hawaii)
 (Date of haul; All vessels; All trips; All areas)

Reported Protected Species catch information				
Species	Alive/Uninjured	Injured	Dead	Total
-----	-----	-----	-----	-----
Seals/Sea Lions				
Monk Seals	0	0	0	0
Other Seals	0	0	0	0
Sea Lions	0	0	0	0
Total Seals/Sea Lions	0	0	0	0
Whales/Dolphins				
Humpback Whales	0	0	0	0
False Killer Whales	0	1	1	2
Other Whales	0	0	0	0
Dolphins	1	0	0	1
Total Whales/Dolphins	1	1	1	3
Turtles				
Green Turtles	0	0	0	0
Hawksbill Turtles	0	0	0	0
Leatherback Turtles	0	0	0	0
Loggerhead Turtles	0	0	0	0
Olive Ridley Turtles	0	0	0	0
Unidentified Turtles	0	0	0	0
Other Turtles	0	0	0	0
Total Turtles	0	0	0	0
Birds				
Albatross	0	0	0	0
Booby	0	0	0	0
Other Birds	0	0	0	0
Total Birds	0	0	0	0
Other Species	0	0	0	0

Date and time of summary:

11/28/05 (12:47:37)

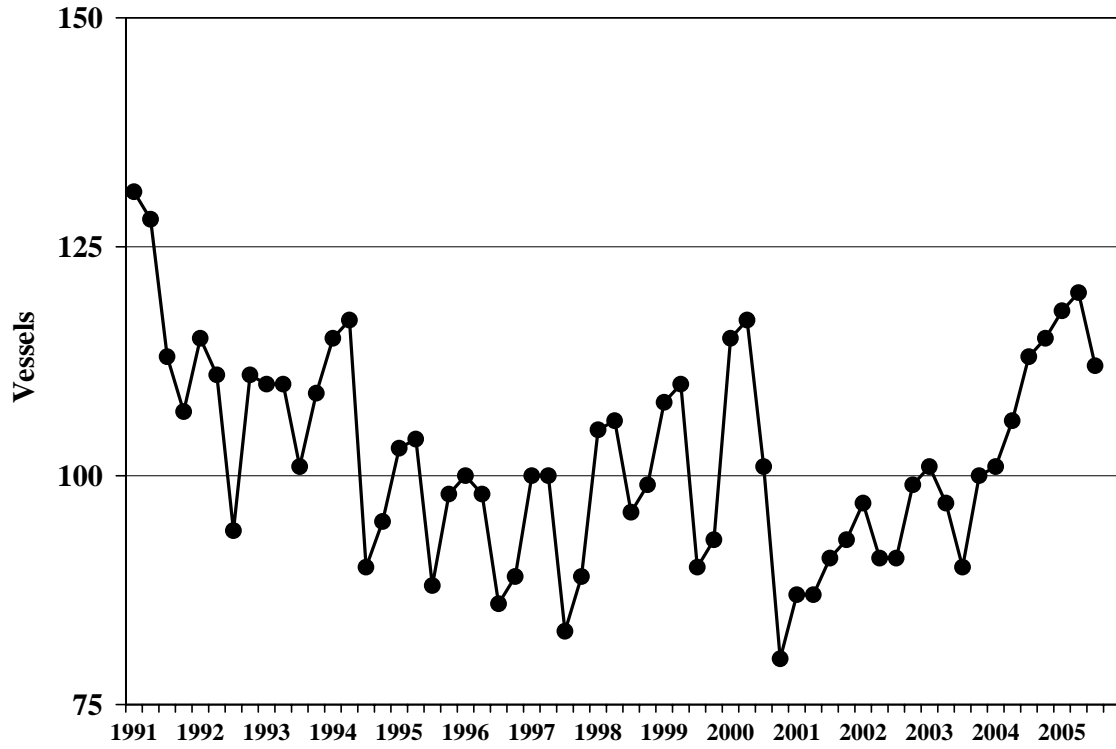


Figure 1.—Active Hawaii-based longline vessels, 1991-2005.

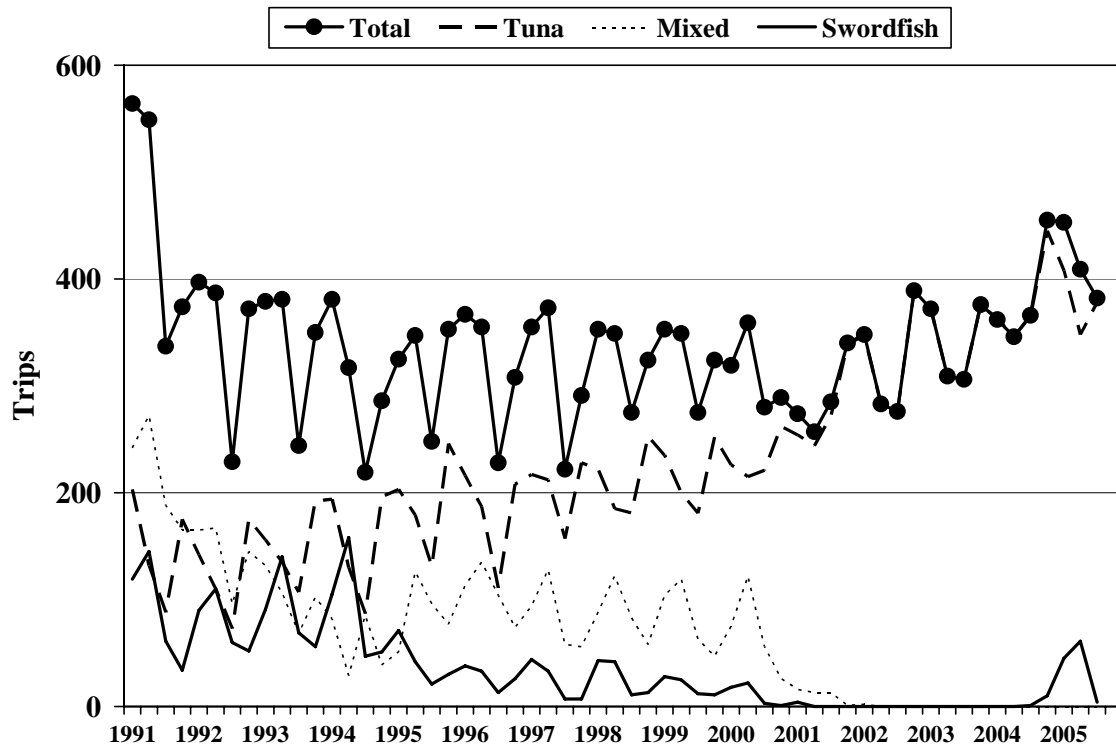


Figure 2.—Trips made by Hawaii-based longline vessels, 1991-2005.

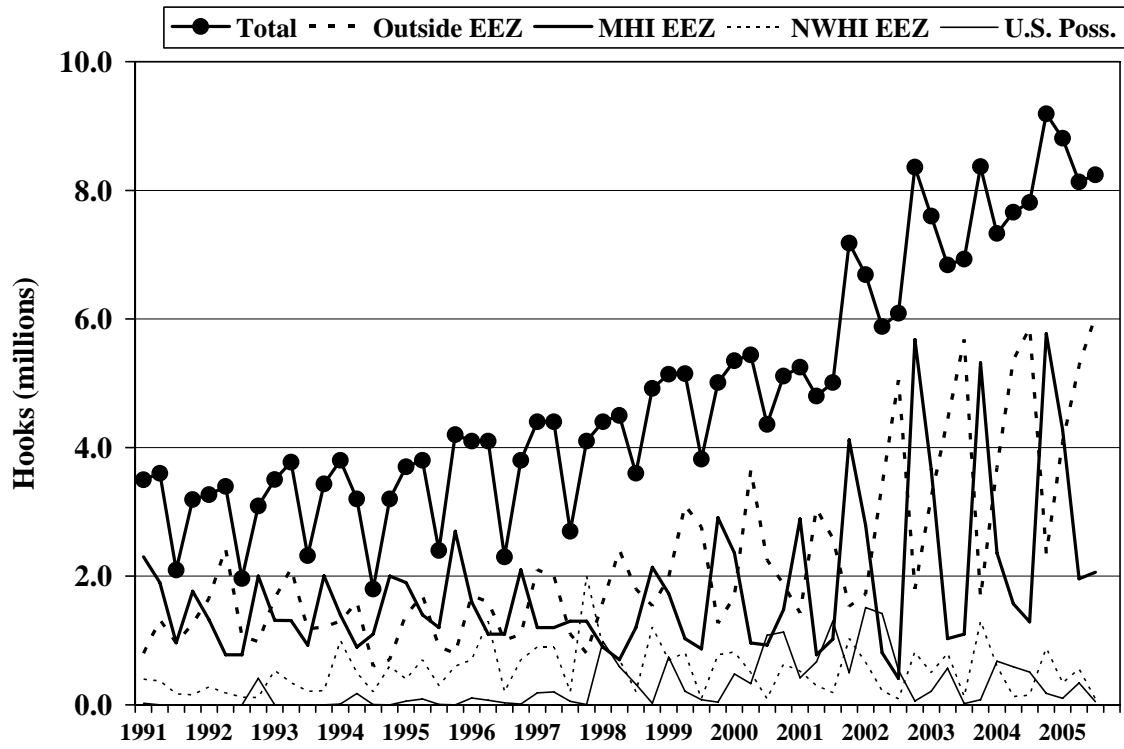


Figure 3.—Hooks set by the Hawaii-based longline fishery by quarter, 1991-2005.

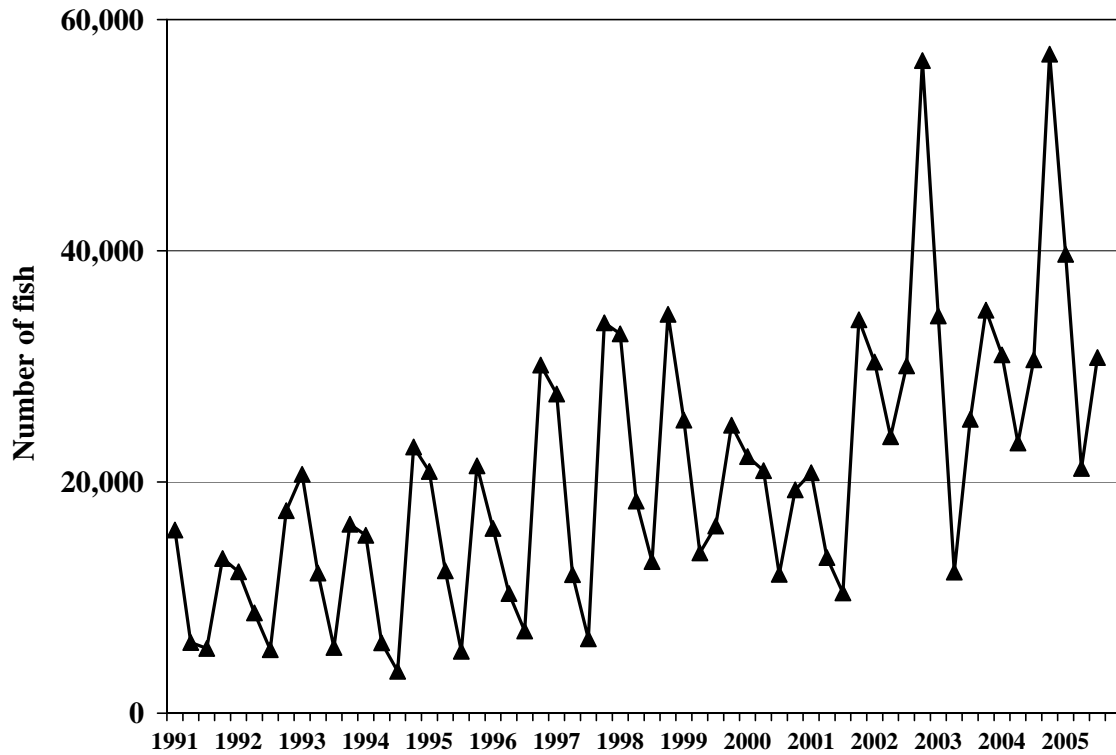


Figure 4.—Hawaii-based longline catch of bigeye tuna by quarter, 1991-2005.

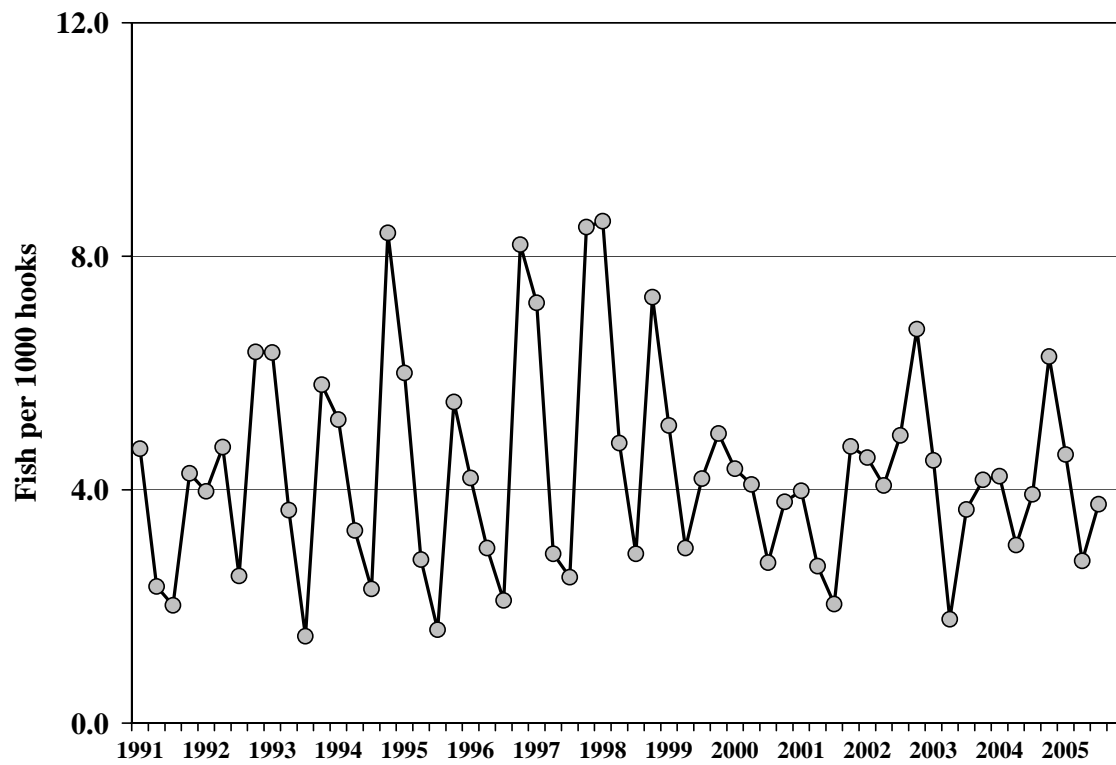


Figure 5.—Bigeye tuna CPUE for tuna-targeted trips by quarter, 1991-2005.

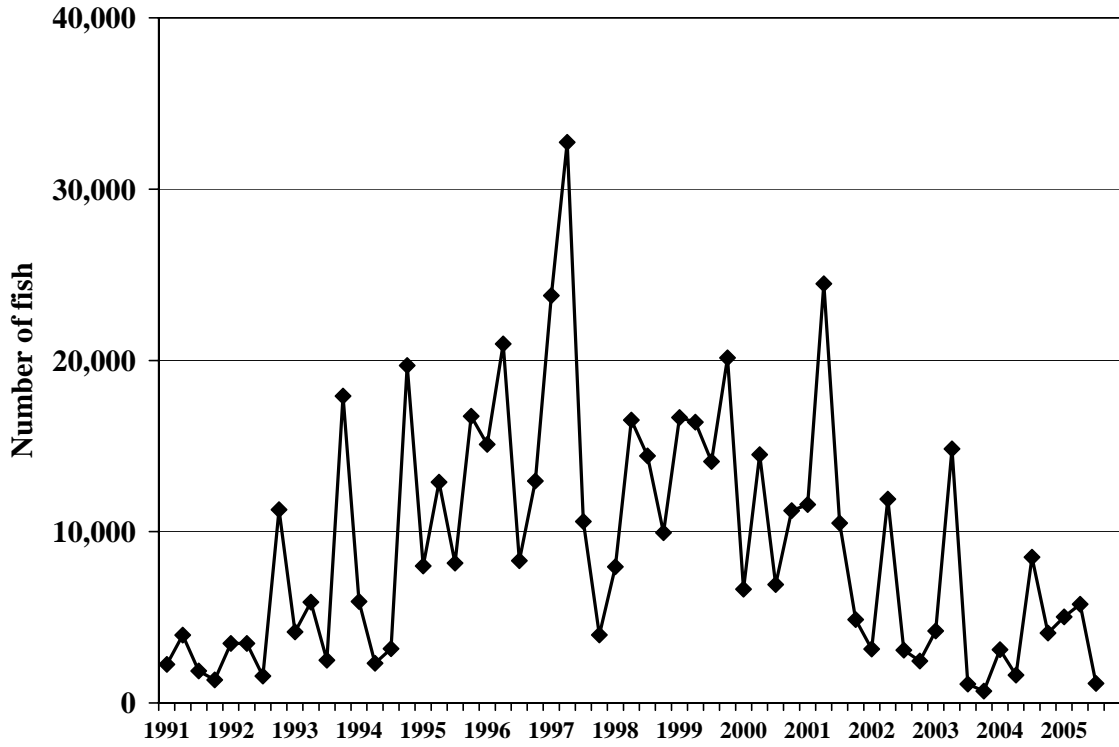


Figure 6.—Hawaii-based longline catch of albacore by quarter, 1991-2005.

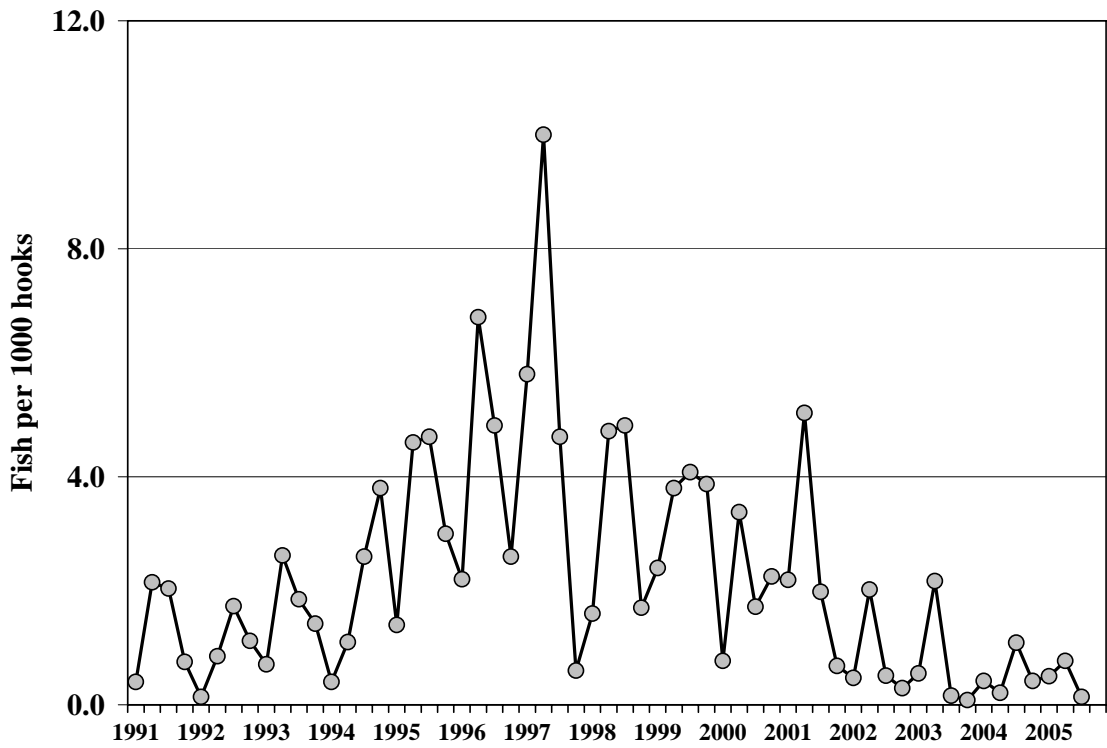


Figure 7.—Albacore CPUE for tuna-targeted trips by quarter, 1991-2005.

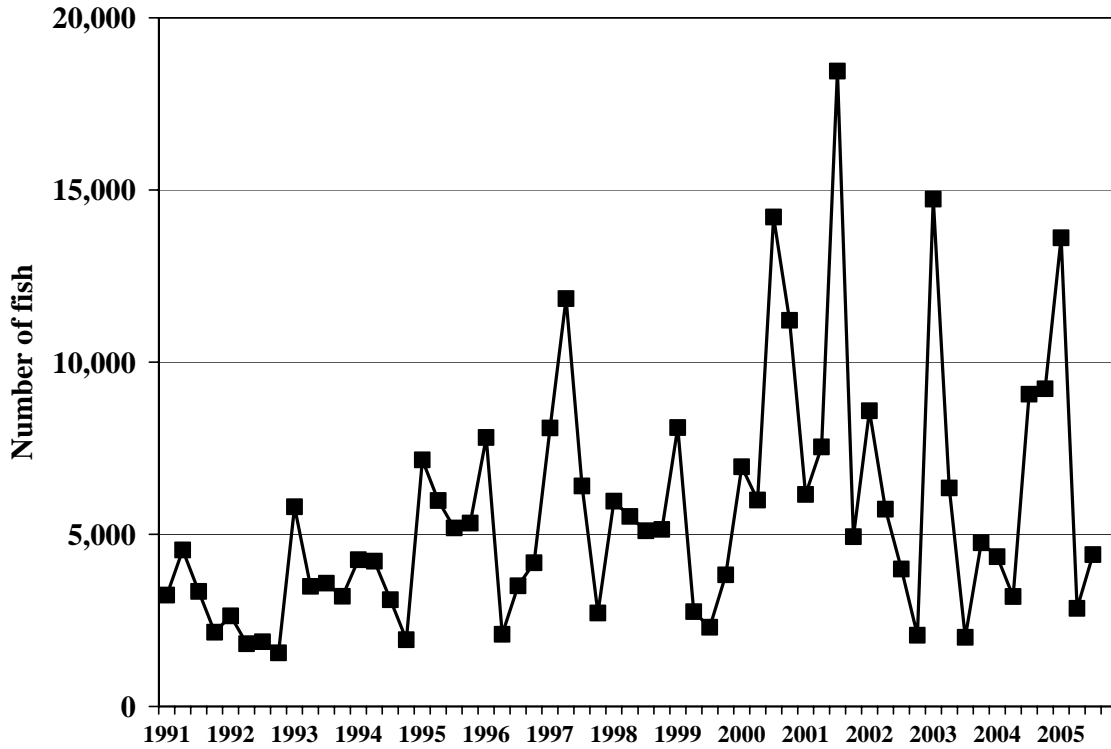


Figure 8.—Hawaii-based longline catch of yellowfin tuna by quarter, 1991-2005.

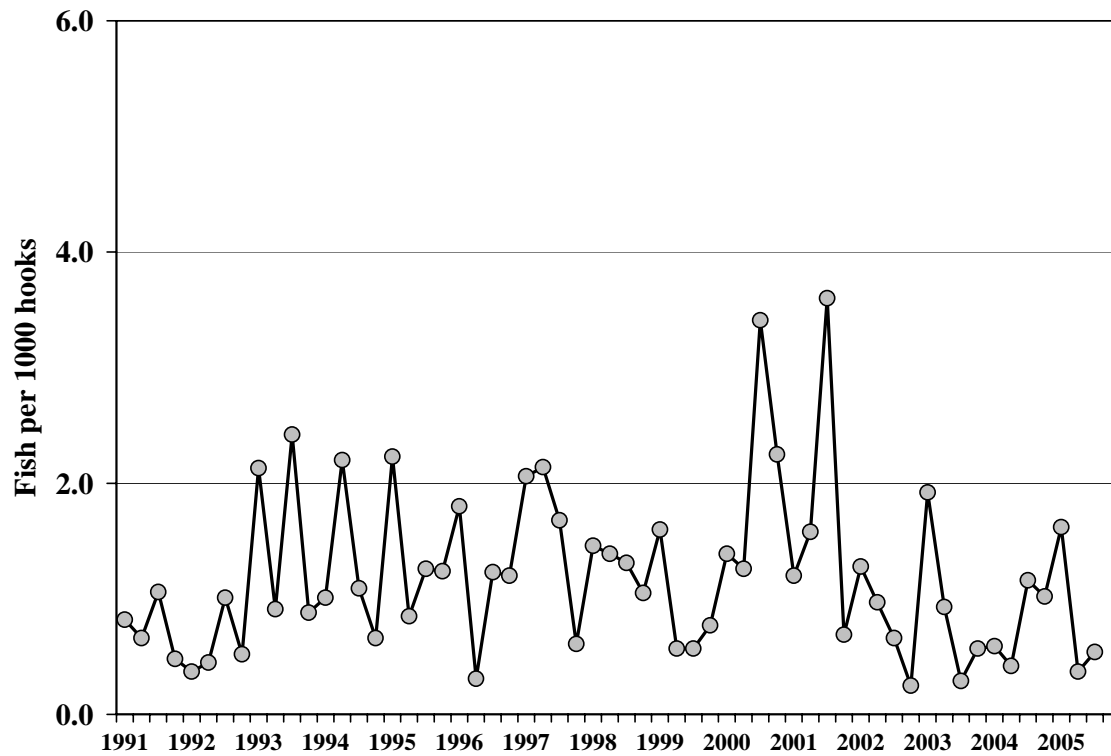


Figure 9.—Yellowfin tuna CPUE for tuna-targeted trips by quarter, 1991-2005.

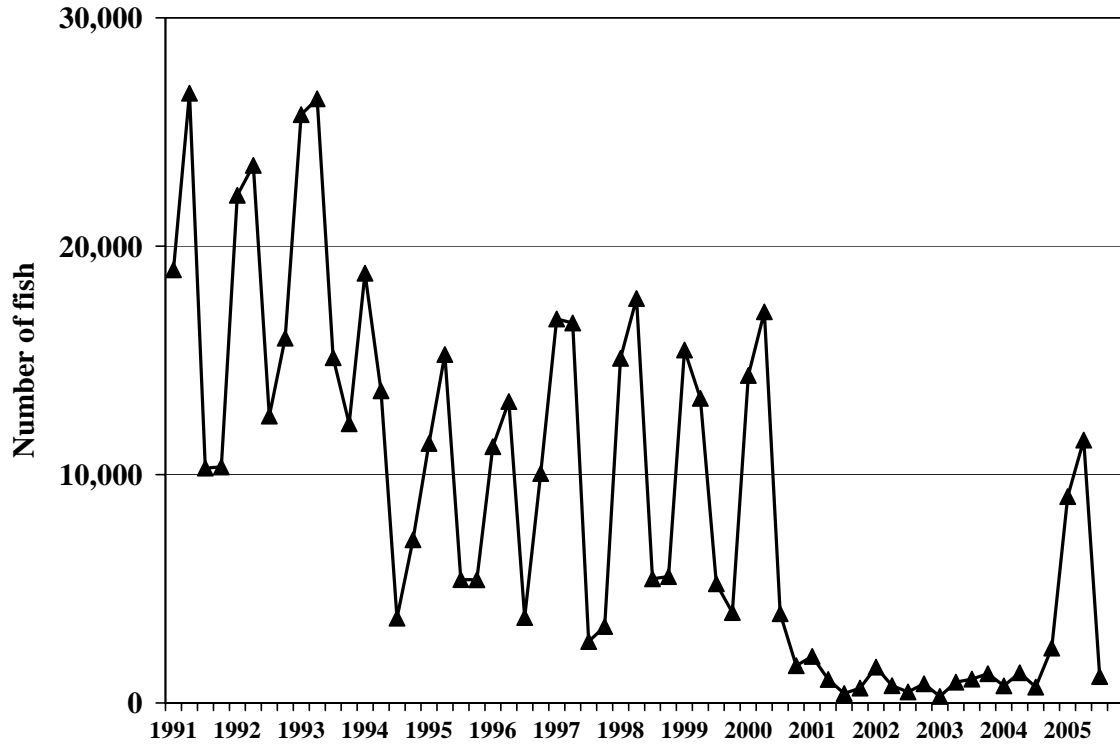


Figure 10.—Hawaii-based longline catch of swordfish by quarter, 1991-2005.

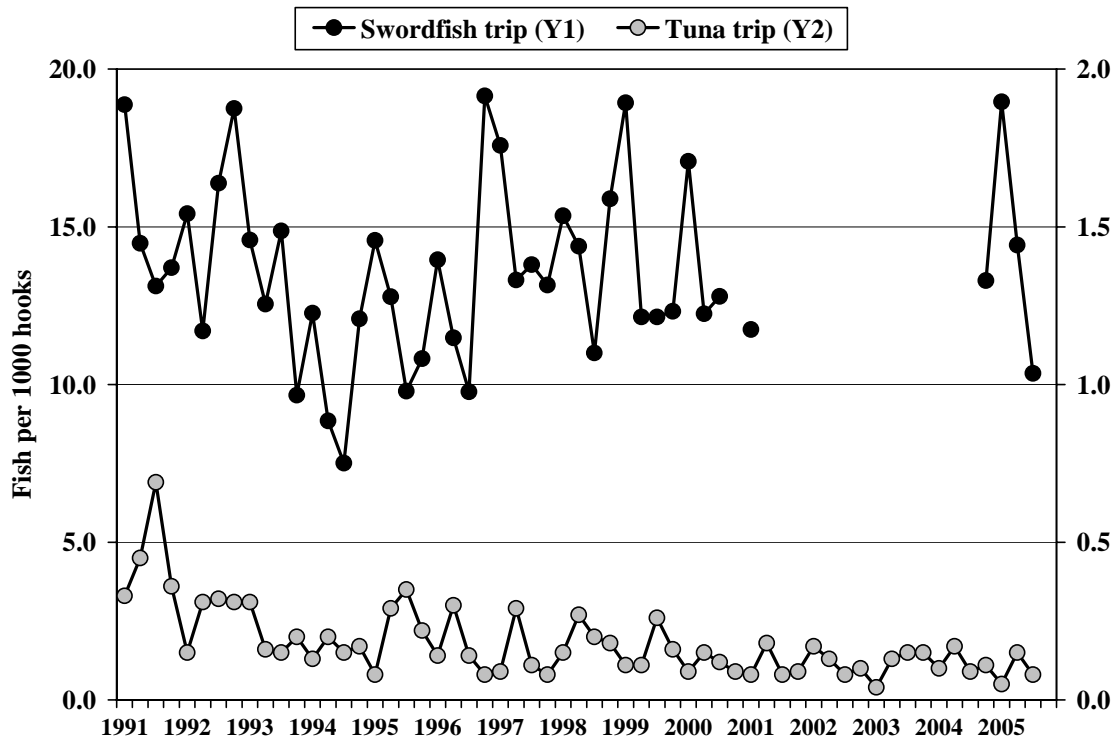


Figure 11.—Swordfish CPUE by quarter, 1991-2005.

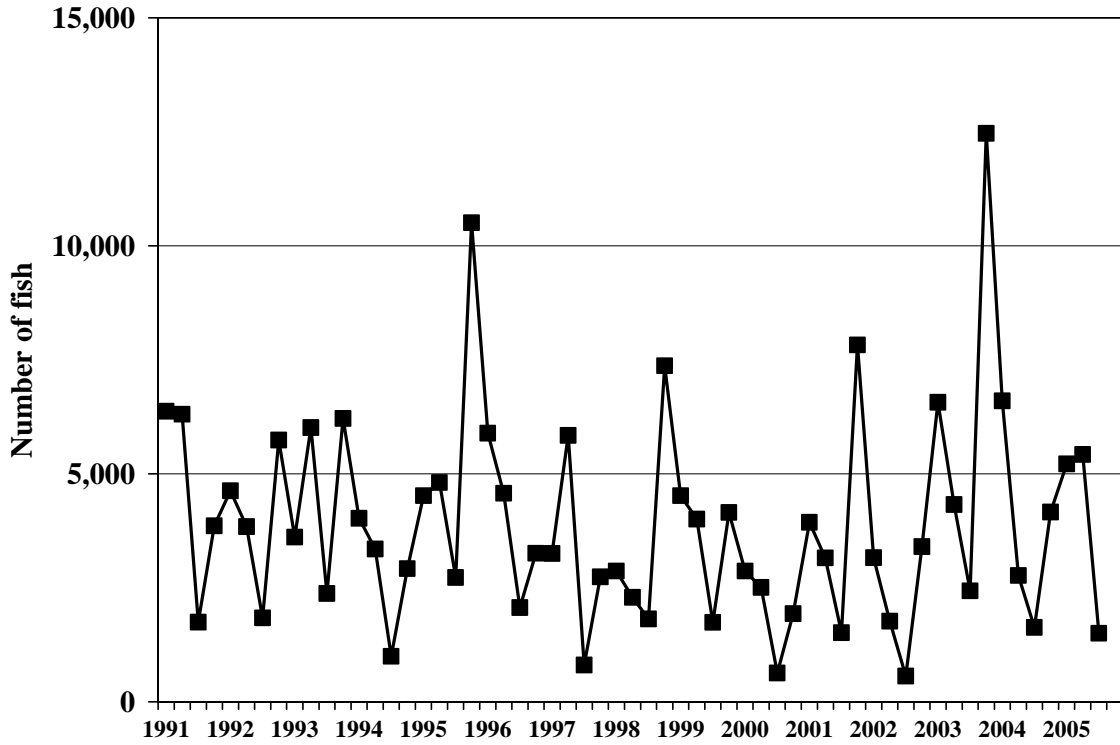


Figure 12.—Hawaii-based longline catch of striped marlin by quarter, 1991-2005.

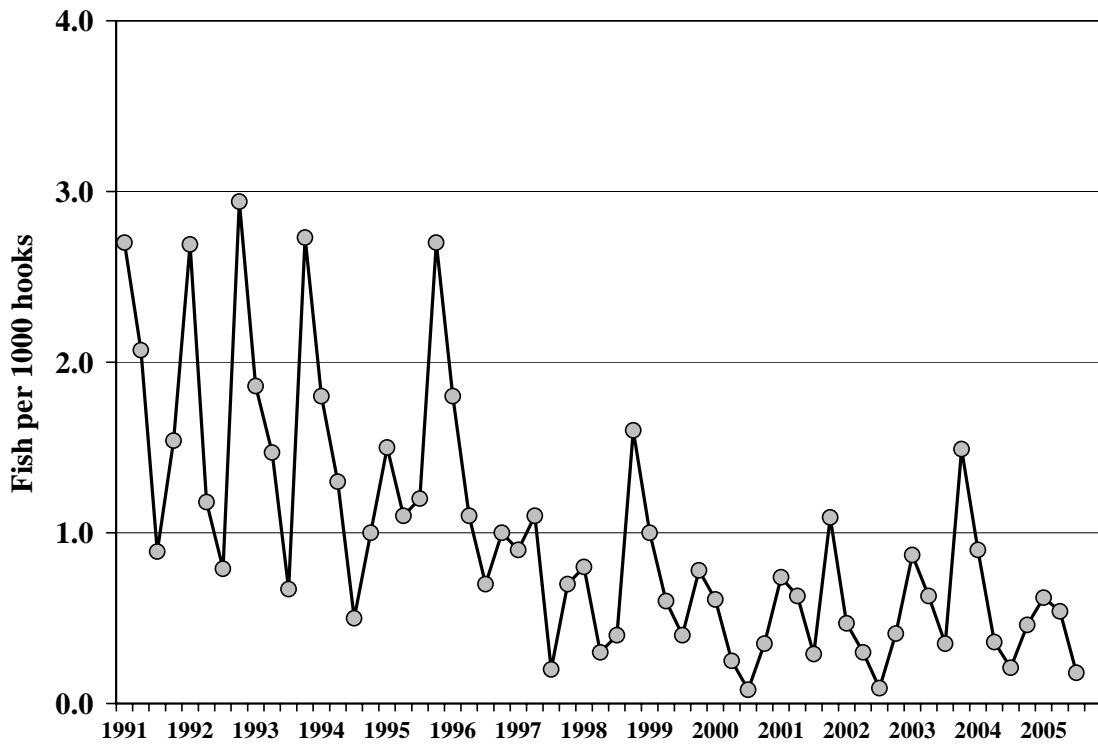


Figure 13.—Striped marlin CPUE for tuna-targeted trips by quarter, 1991-2005.

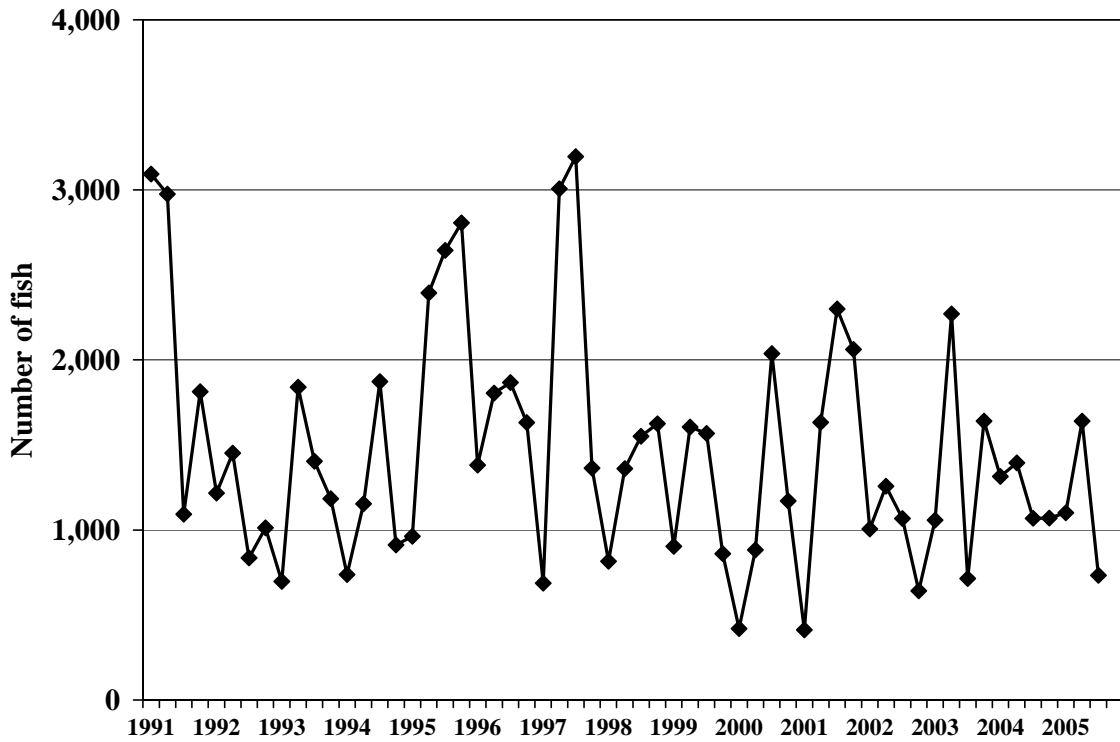


Figure 14.—Hawaii-based longline catch of blue marlin by quarter, 1991-2005.

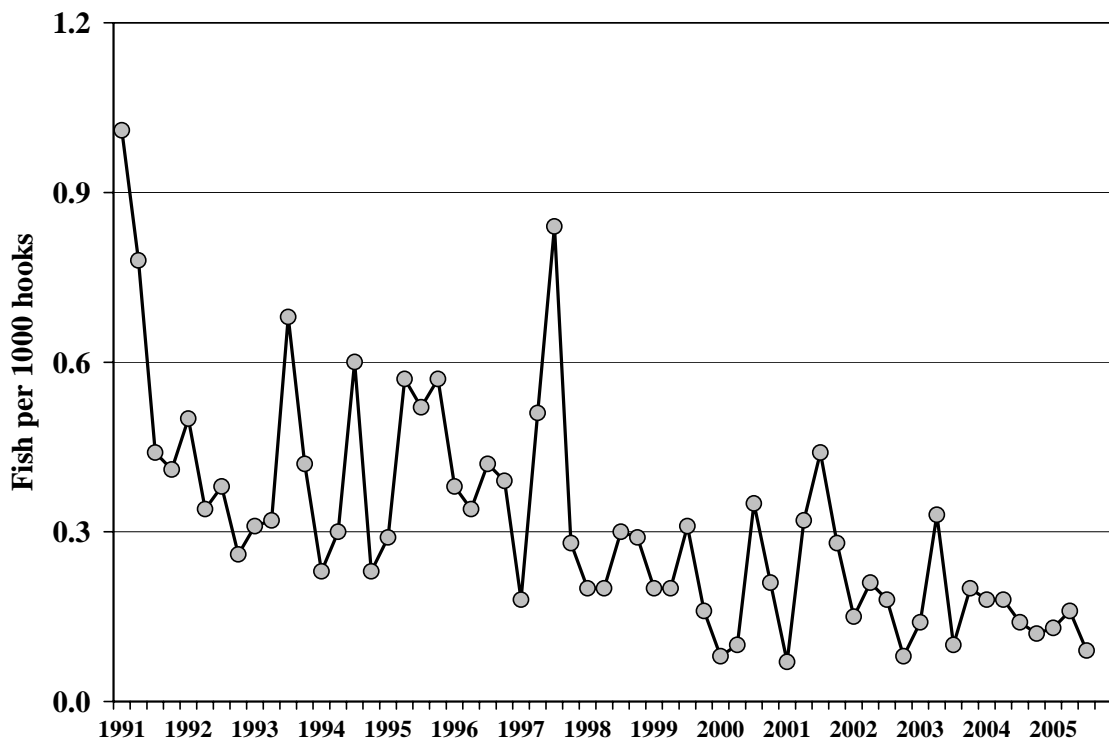


Figure 15.—Blue marlin CPUE for tuna-targeted trips by quarter, 1991-2005.

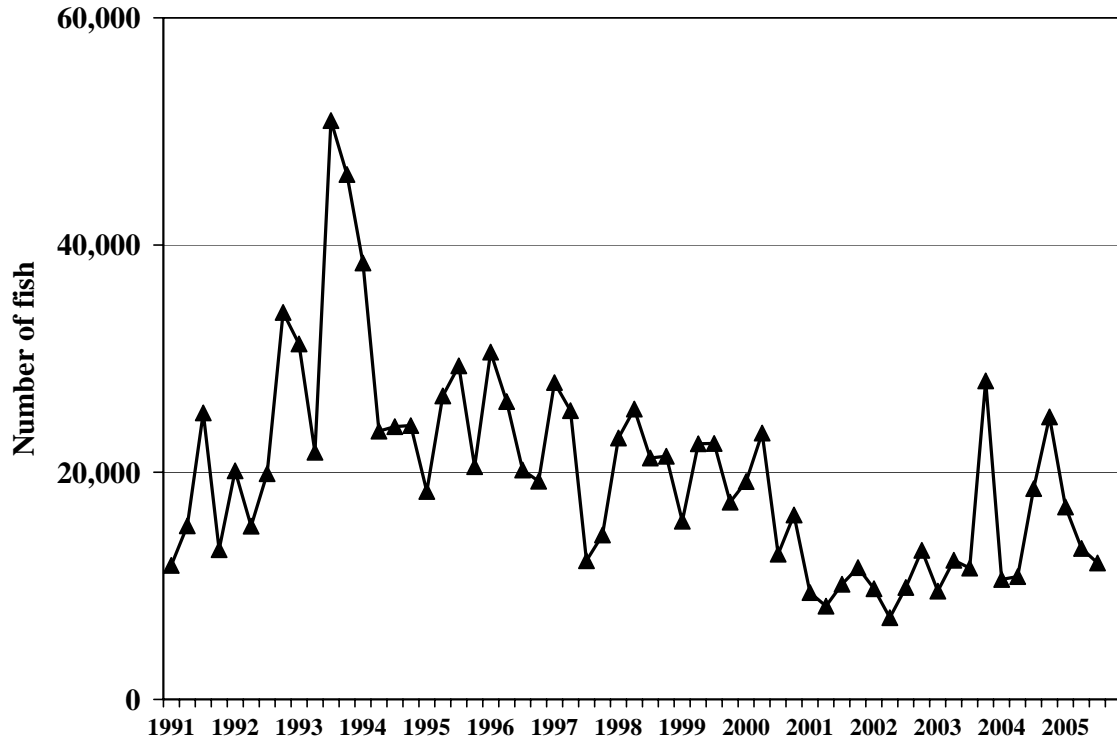


Figure 16.—Hawaii-based longline catch of blue shark by quarter, 1991-2005.

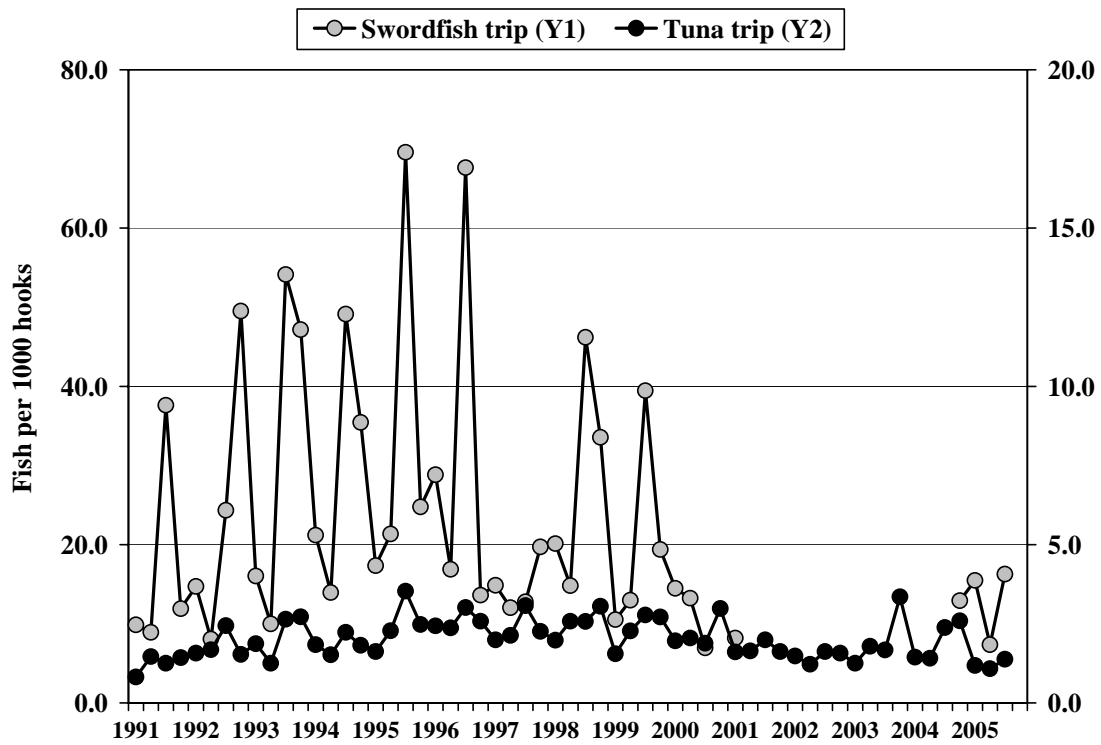


Figure 17.—Blue shark CPUE by quarter, 1991-2005.

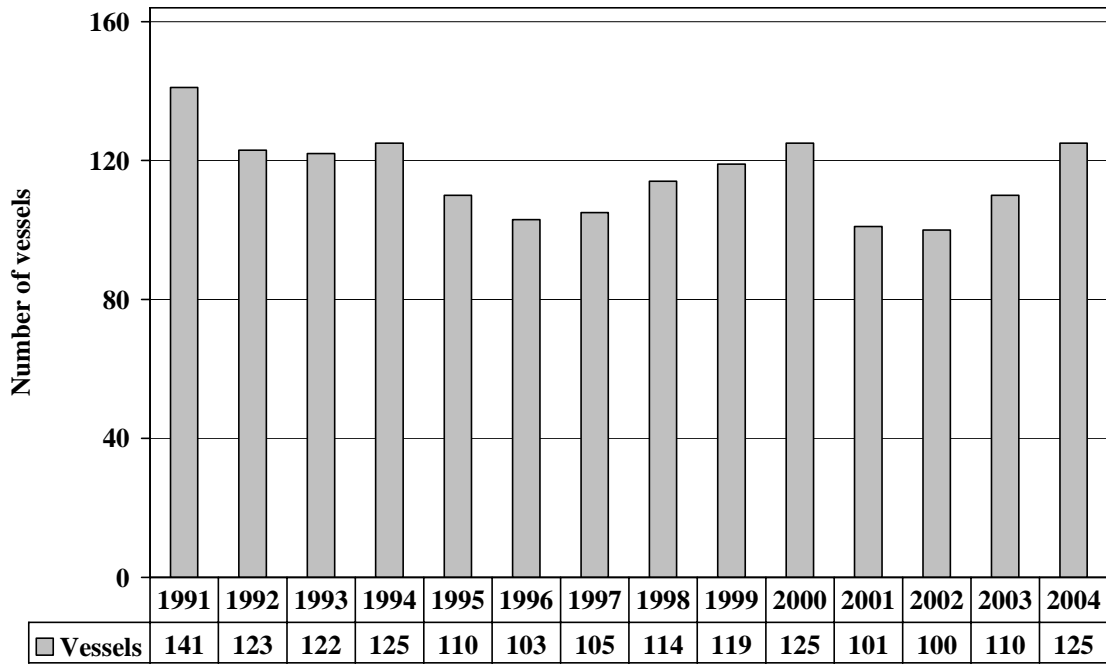


Figure A1.--Number of active Hawaii-based longline vessels, 1991-2004.

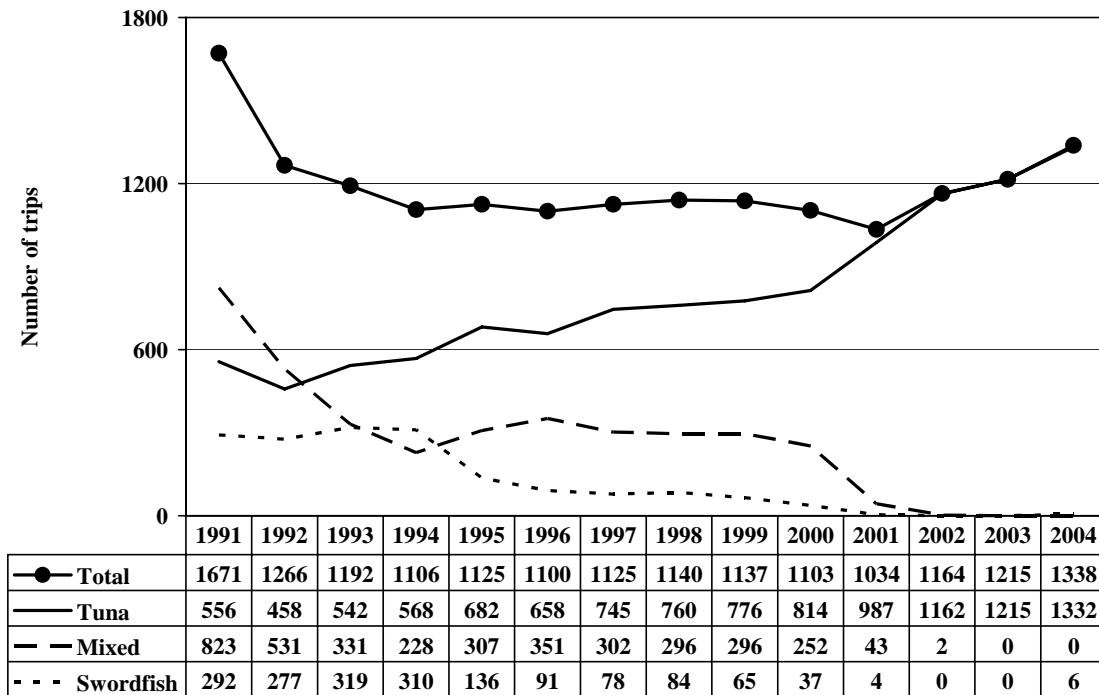


Figure A2.--Number of trips by the Hawaii-based longline fishery, 1991-2004.

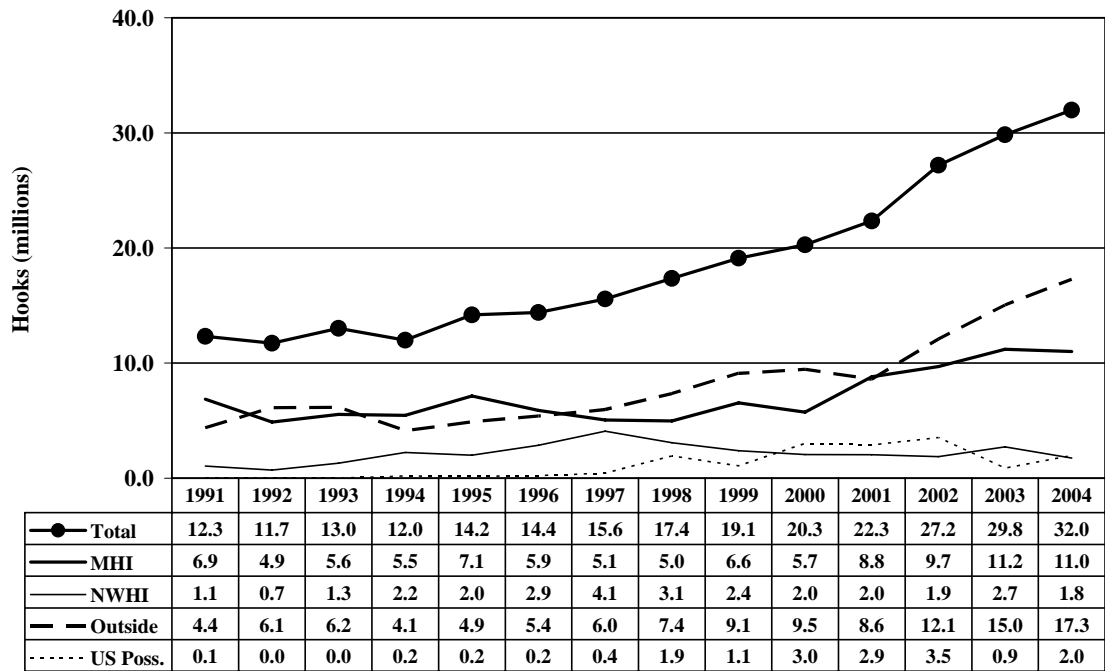


Figure A3.--Number of hooks set by area, 1991-2004.

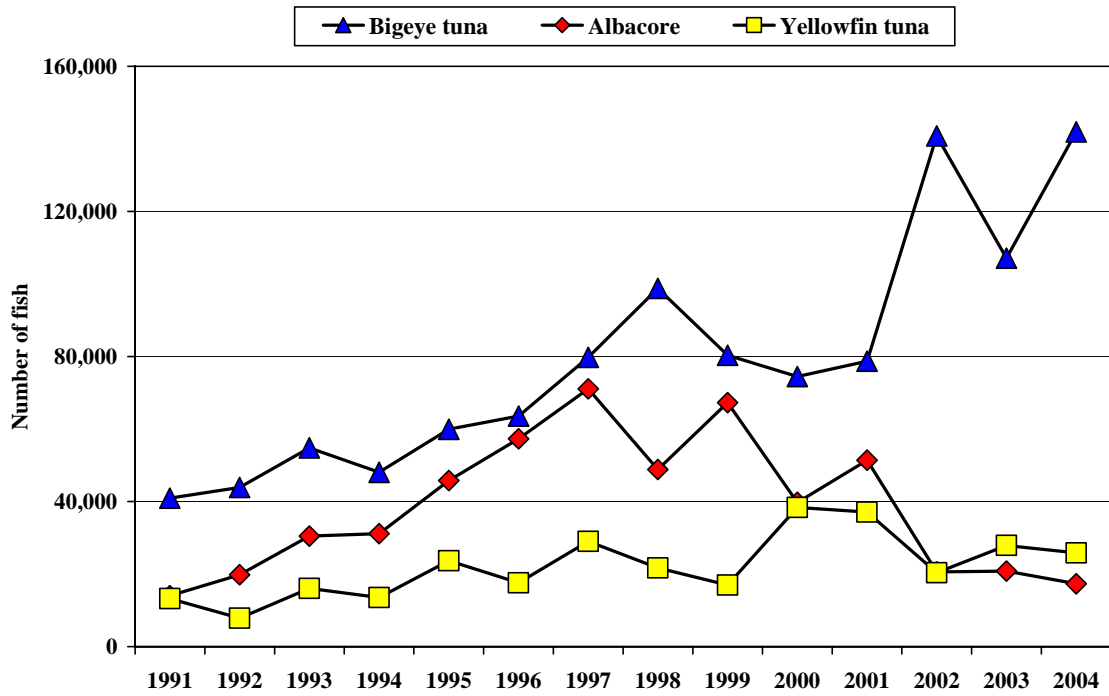


Figure A4.--Tuna catches by the Hawaii-based longline fishery, 1991-2004.

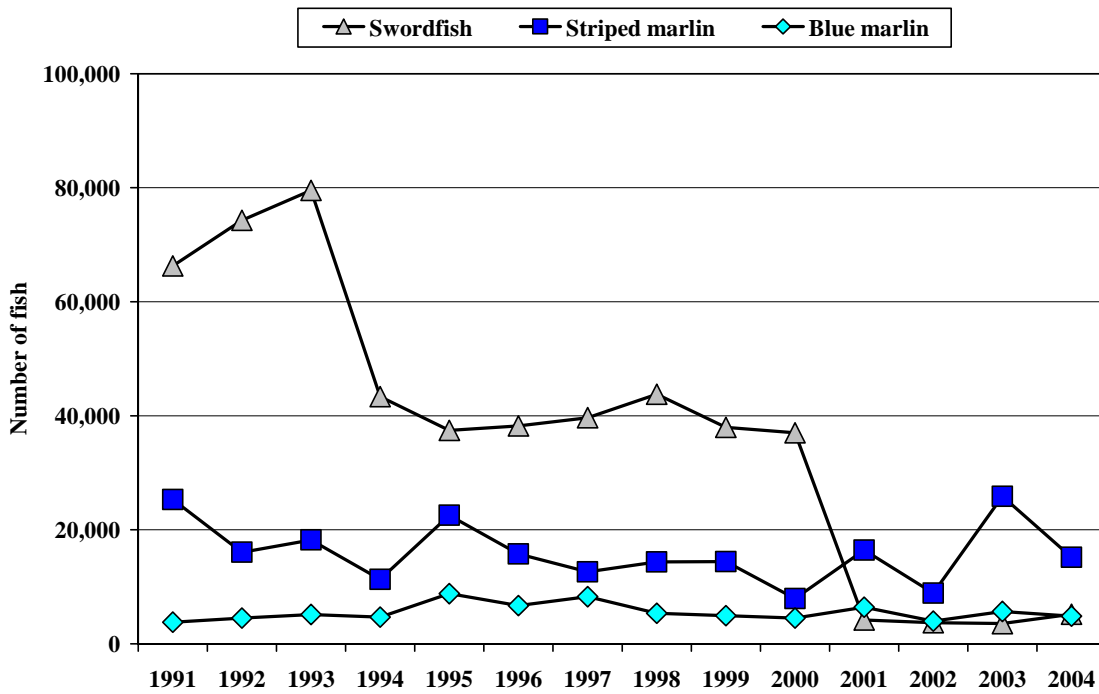


Figure A5.--Billfish catches by the Hawaii-based longline fishery, 1991-2004.

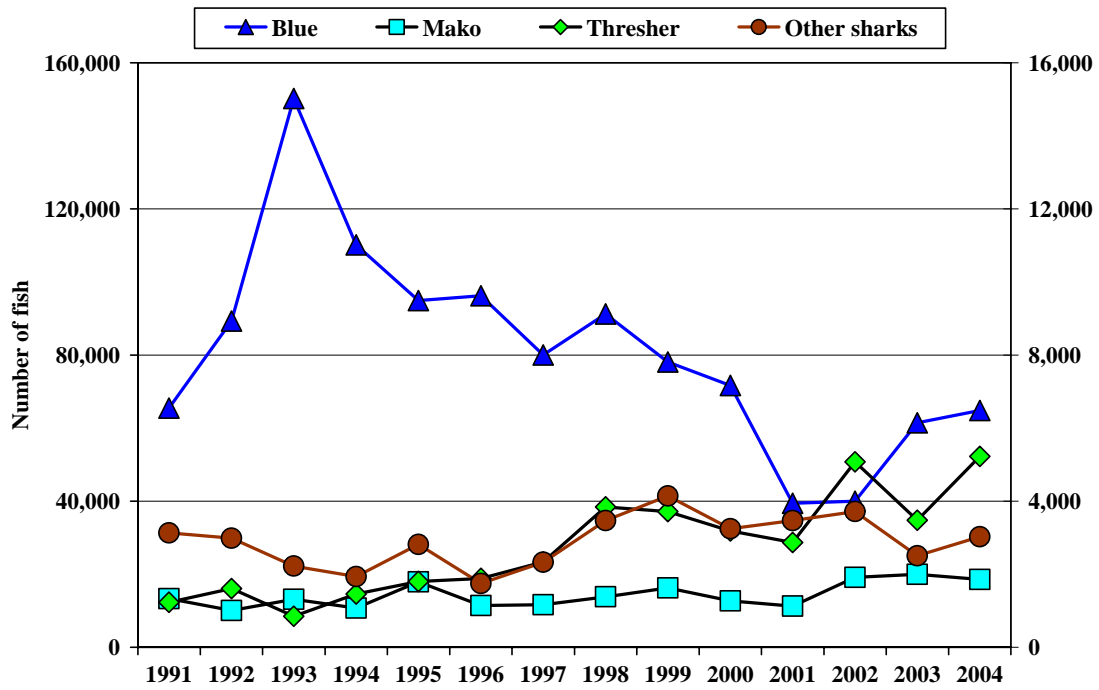


Figure A6.--Shark catches by the Hawaii-based longline fishery, 1991-2004.

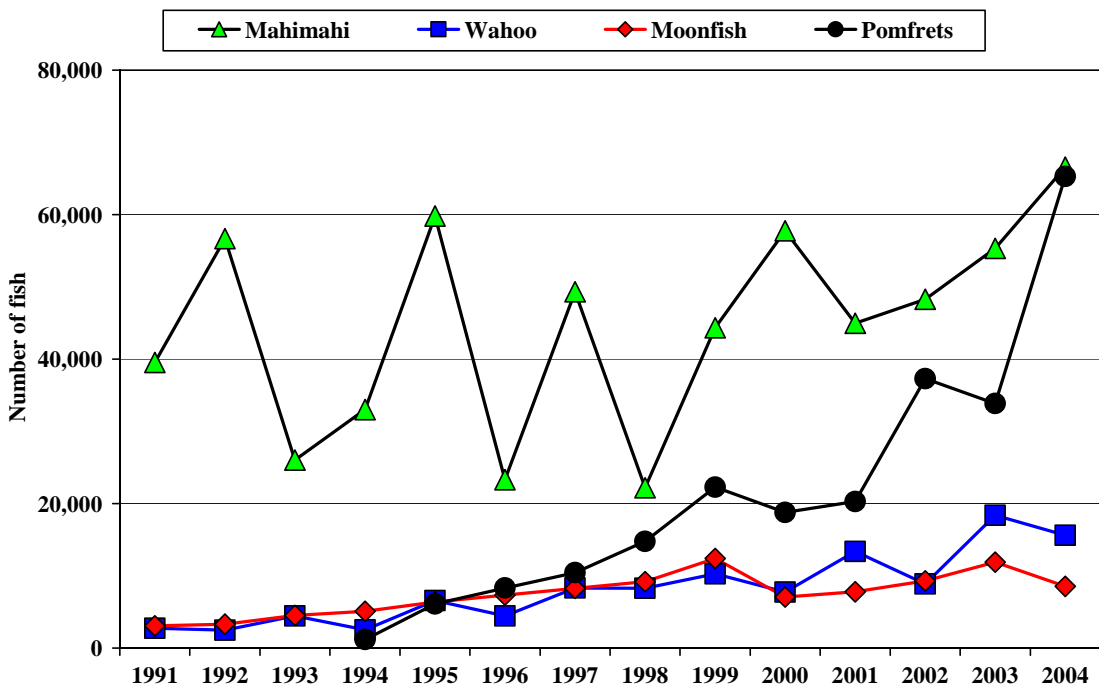


Figure A7.--Catch of miscellaneous pelagic species, 1991-2004.