

PIFSC Report on the American Samoa Longline Fishery Calendar Year 2007¹

Fisheries Monitoring and Socioeconomics Division
Pacific Islands Fisheries Science Center

The American Samoa federal longline logbook data are summarized by date of haul as shown in Table 1. All longline logbook data submitted by holders of federal limited entry longline permits for fishing activities during 2007 have been processed by staff at the Department of Marine and Wildlife Resources (DMWR) and are reported in this report. As of March 27, 2008, the documented delinquency rate for 2007 was 1.2% according to the DMWR Daily Effort Census and Delinquency Reporting System. Therefore, the data in this report are preliminary and are from the logs submitted to DMWR as of March 27, 2008.

Twenty-nine vessels turned in longline logs for sets made during calendar year 2007 (Figure 1). The logbooks submitted by the 29 vessels indicated they made 5,910 sets and set 17,524,291 hooks. Even though the number of vessels turning in logs is the same as last year, the number of sets is up by 18% (Figure 2) and the number of hooks set is up by 24% (Figure 3), exceeding the previous record set in 2003 and almost matched last year, due to the almost complete domination of the fishing fleet by larger vessels.

Albacore continued to dominate the catch with 321,595 fish caught in 2007 (Figure 4). This is a 23% increase over the catch of last year and just short of the record set in 2002. Catches of skipjack tuna decreased by 12% from last year, while catches of yellowfin tuna increased by 54% and bigeye tuna increased by 18% (Figure 5). Catches of billfish, mahimahi, wahoo, and sharks for 2007 decreased by 8%, 56%, 17% and 10%, respectively, compared to the 2006 values (Figure 6).

Generally speaking, CPUE (number of fish per 1000 hooks) was slightly to moderately down for almost all species in 2007. Albacore CPUE was essentially the same but decreased slightly from 18.5 in 2006 to 18.4 in 2007 (Figure 7). The CPUEs of skipjack tuna and bigeye tuna decreased by 28% and 4%, respectively, while the CPUE of yellowfin tuna increased by 24% compared to their 2006 values (Figure 8). The CPUEs of mahimahi, wahoo, billfish and sharks decreased by 65%, 33%, 25% and 28%, respectively, compared to 2006 (Figure 9).

¹ PIFSC Data Report DR-08-004
Issued 21 April 2008

Table 1. American Samoa 2007 Longline Logbook Summary

TRIP INFORMATION

Number of Vessels:	29
Number of Trips:	377
Number of Sets:	5910
1000's of Hooks Set:	17524
Number of Lightsticks Used:	9446

CATCH INFORMATION

Species	# Caught	# Kept	# Finned	# Caught/ 1000 Hooks
BILLFISH				
Black marlin	11	1		0.00
Blue marlin	3620	619		0.21
Striped marlin	502	35		0.03
Sailfish	453	31		0.03
Spearfish	786	33		0.04
Swordfish	403	219		0.02
TOTALS	5775	938		0.33
SHARKS				
Blue shark	4352	20	2	0.25
Shortfin mako shark	281	9		0.02
Thresher shark	218	1		0.01
Oceanic white tip	1287	6	4	0.07
Sharks (misc)	571	9		0.03
TOTALS	6709	45	6	0.38
TUNA				
Albacore	321595	320932		18.35
Bigeye tuna	15526	13729		0.89
Bluefin tuna	45	20		0.00
Skipjack tuna	40396	30444		2.31
Yellowfin tuna	33890	31922		1.93
TOTALS	411452	397047		23.48
OTHER PELAGICS				
Mahimahi	2249	1352		0.13
Moonfish	633	138		0.04
Oilfish	9038	47		0.52
Pomfret	914	97		0.05
Wahoo	17546	14269		1.00
TOTALS	30380	15903		1.73
NON-PMUS				
Pelagic fish (misc)	632	29		0.04
TOTALS	632	29		0.04

Figure 1. American Samoa Longline Vessels by Year

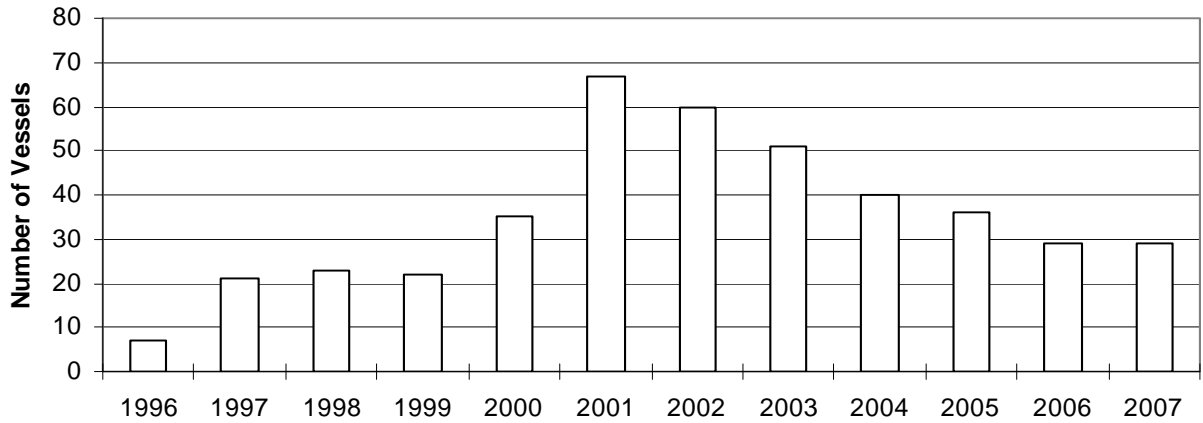


Figure 2. Number of Sets by American Samoa Longline Vessels by Year

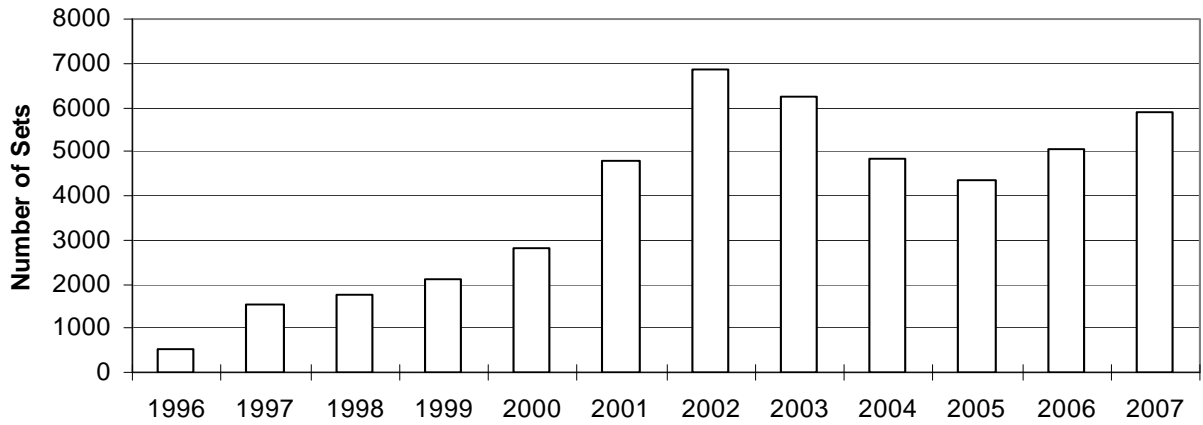


Figure 3. Number of Hooks Set by the American Samoa Longline Fleet by Year

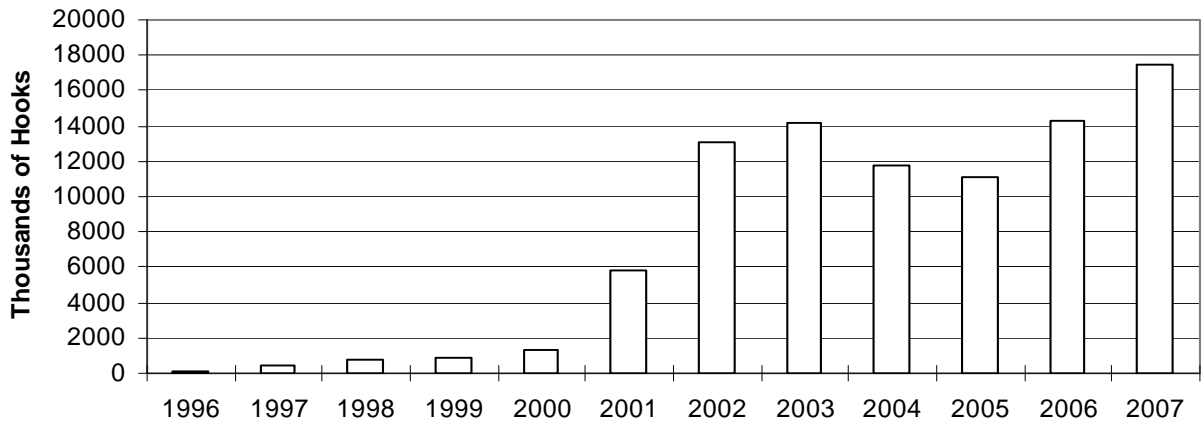


Figure 4. American Samoa Longline Albacore Catch by Year

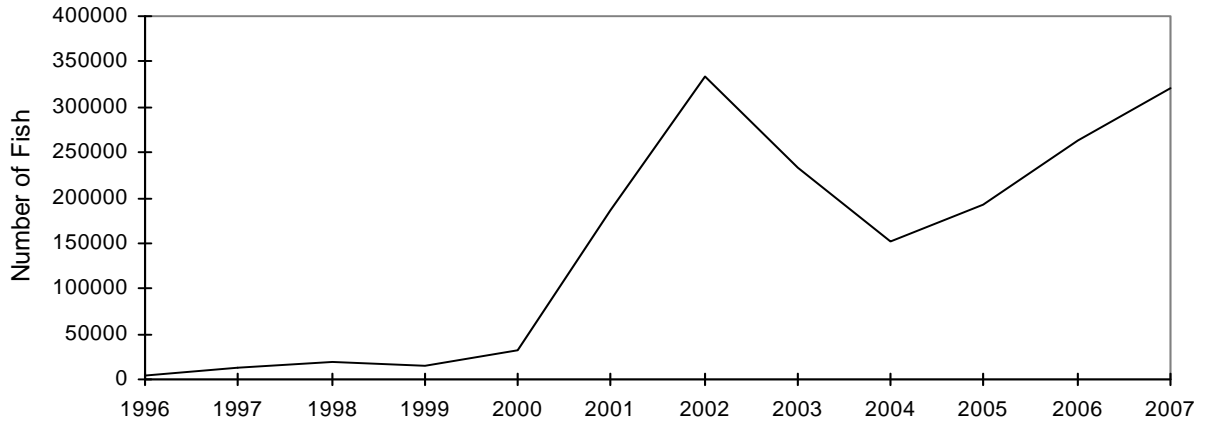


Figure 5. American Samoa Longline Tuna Catch by Year

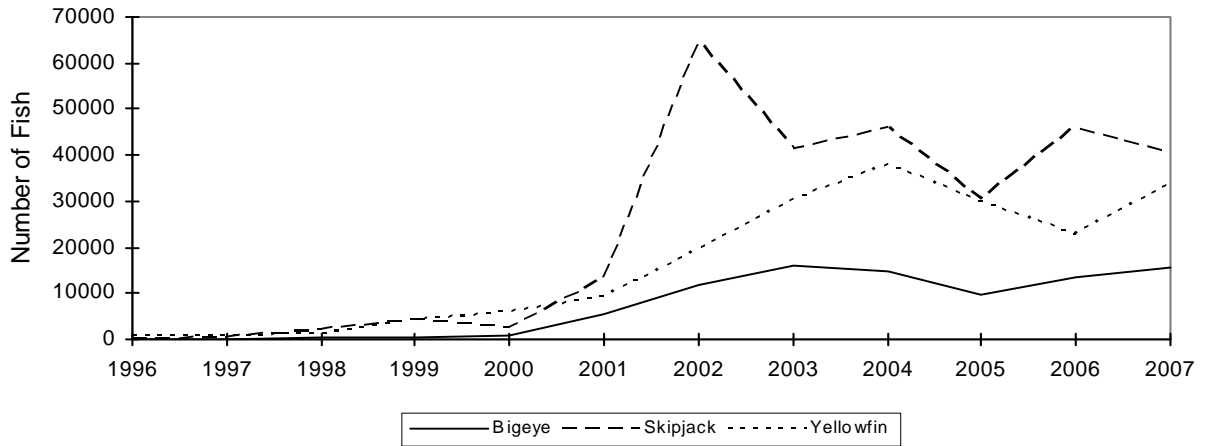


Figure 6. American Samoa Longline Catch of Miscellaneous Pelagic Fish by Year

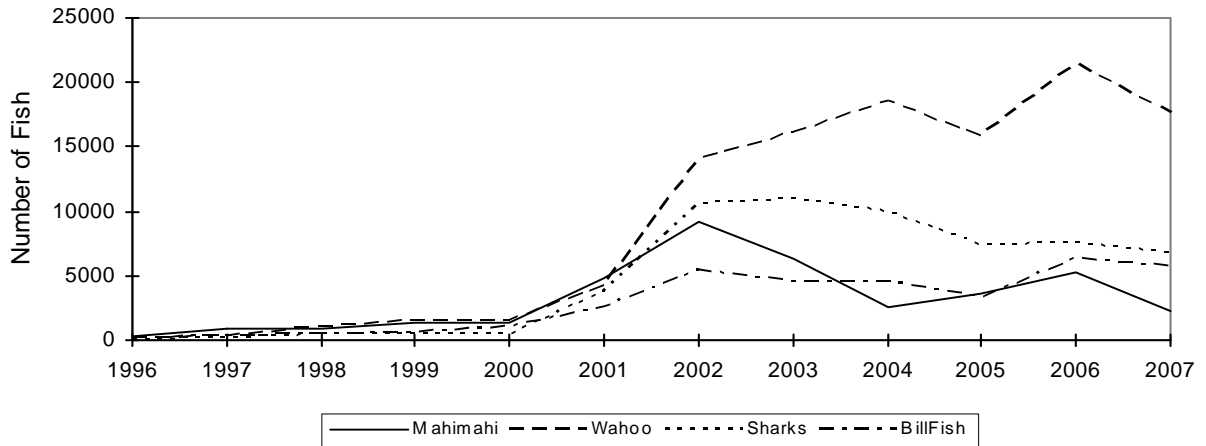


Figure 7. American Samoa Longline Albacore Catch per 1000 Hooks by Year

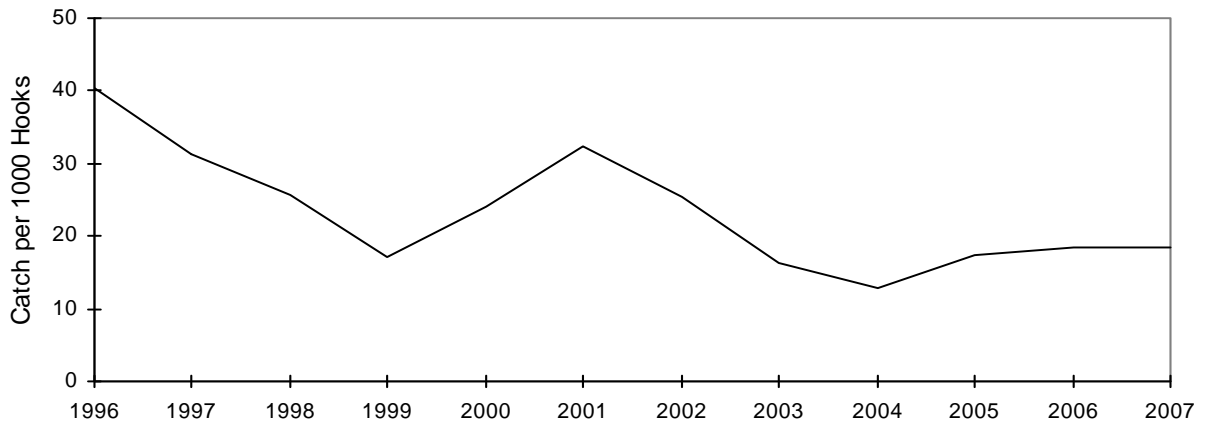


Figure 8. American Samoa Longline Tuna Catch per 1000 Hooks by Year

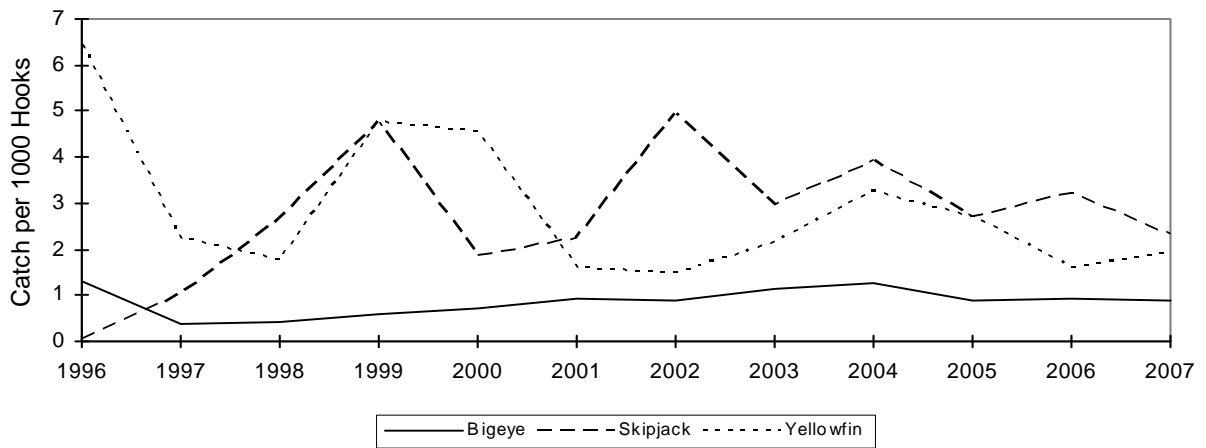


Figure 9. American Samoa Longline Catch of Other Pelagic Fish per 1000 Hooks by Year

