

# PIFSC Report on the American Samoa Longline Fishery Year 2010<sup>1</sup>

Fisheries Research and Monitoring Division  
Pacific Islands Fisheries Science Center

The American Samoa federal longline logbook data are summarized by date of haul as shown in Table 1. All longline logbook data submitted by holders of federal limited entry longline permits for fishing activities during 2010 have been processed by the Department of Marine and Wildlife Resources (DMWR) and are included in this report. The data in Table 1 are derived from all federal logbook data submitted by American Samoa-based longline vessels as of March 9, 2011. The table entries reflect nearly 99% of all effort for both large and small longline vessels for the year.

During calendar year 2010, 26 vessels turned in longline logs for sets made during the year (Figure 1). The logbooks submitted by the 26 vessels indicated that they made 4,496 sets and set 13,066,887 hooks. While the number of active vessels remained the same as in 2009, the number of sets decreased by 2% (Figure 2) and the number of hooks set decreased by 8% (Figure 3).

The total catch for all species combined was 327,183 fish, an increase of 7% compared to 2009 (Figure 1). Albacore continued to dominate the catch with 227,776 fish caught in 2010 (Figure 4) which is a 8% increase over the catch of last year. Catches of yellowfin tuna increased by 42% and bigeye tuna increased by 23%, while catches of skipjack tuna decreased by 6% from last year (Figure 5). Catches of mahimahi, billfish, and wahoo decreased by 39%, 16%, and 2%, respectively, while the catch of sharks decreased by 8% compared to last year (Figure 6).

The albacore catch per unit of effort (CPUE) increased to 17.43 fish per 1000 hooks in 2010 compared to a CPUE of 14.87 fish per 1000 hooks last year (Figure 7), an increase of 17%. The catch per 1000 hooks of yellowfin tuna increased by 56%, the catch per 1000 hooks of bigeye tuna increased by 36%, and the catch per 1000 hooks for skipjack tuna increased by 2% compared to 2009 (Figure 8). The catch per 1000 hooks of mahimahi and billfish decreased by 32% and 10%, respectively. The catch per 1000 hooks of wahoo increased by 7%, while the catch per 1000 hooks of sharks stayed the same as last year (Figure 9).

---

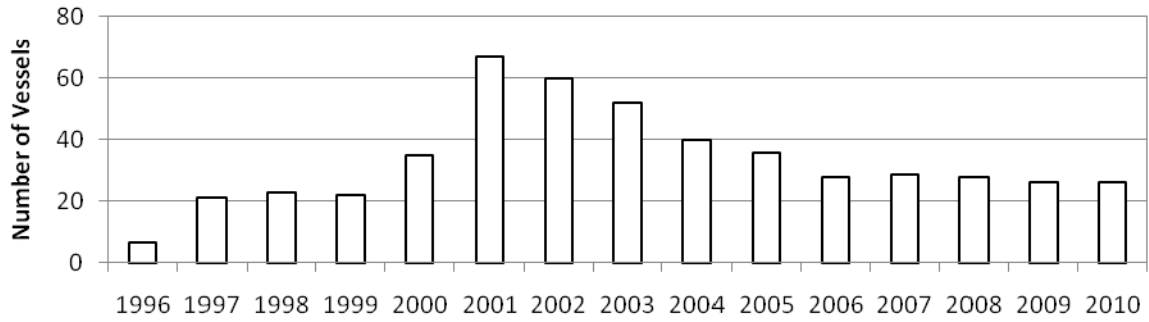
<sup>1</sup> PIFSC Data Report DR-11-005.

First issued 15 February 2011. Updated 5 May 2011.

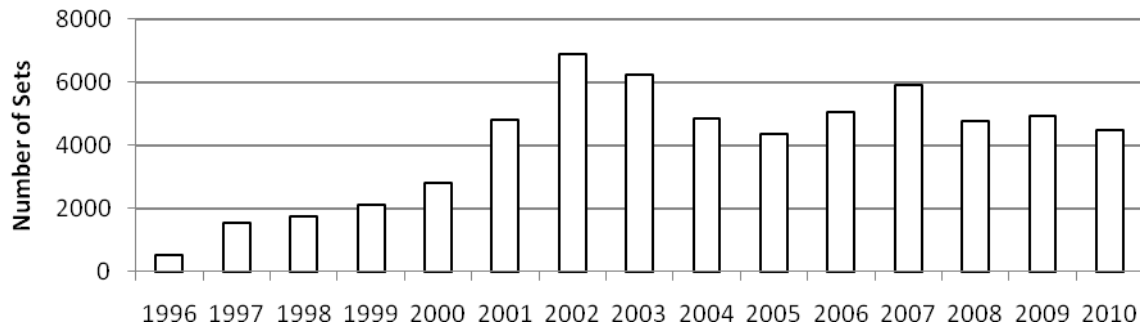
**Table 1. Summary of fish catch and nominal fishing effort by American Samoa Longline vessels during calendar year 2010 based on longline logbooks submitted before March 9, 2011.**

<b>TRIP INFORMATION</b>				
	Number of Vessels:		26	
	Number of Trips:		264	
	Number of Sets:		4,496	
	1000's of Hooks Set:		13,067	
	Number of Light Sticks Used:		613	
<b>CATCH INFORMATION</b>				
<b>Species</b>	<b>Number Caught</b>	<b>Number Kept</b>	<b>Number Released</b>	<b>Number Caught per 1000 Hooks</b>
<b>BILLFISH</b>				
Black marlin	8	3	5	0.00
Blue marlin	2,960	718	2,242	0.23
Striped marlin	316	65	251	0.02
Sailfish	363	51	312	0.03
Spearfish	809	80	729	0.06
Swordfish	298	192	106	0.02
<b>TOTAL BILLFISH</b>	<b>4,754</b>	<b>1,109</b>	<b>3,645</b>	<b>0.36</b>
<b>SHARKS</b>				
Blue shark	3,399	34	3,365	0.26
Shortfin mako shark	308	3	305	0.02
Thresher shark	215	0	215	0.02
White tip oceanic shark	797	14	783	0.06
Sharks (unknown)	409	0	409	0.03
<b>TOTAL SHARKS</b>	<b>5,128</b>	<b>51</b>	<b>5,077</b>	<b>0.39</b>
<b>TUNA</b>				
Albacore tuna	227,776	226,996	780	17.43
Bigeye tuna	10,419	8,740	1,679	0.80
Bluefin tuna	41	28	13	0.00
Skipjack tuna	30,959	19,757	11,202	2.37
Yellowfin tuna	22,963	19,950	3,013	1.76
<b>TOTAL TUNA</b>	<b>292,158</b>	<b>275,471</b>	<b>16,687</b>	<b>22.36</b>
<b>OTHER PELAGICS</b>				
Mahimahi	1,955	847	1,108	0.15
Moonfish	472	101	371	0.04
Oilfish	7,904	24	7,880	0.60
Pomfret	661	147	514	0.05
Wahoo	13,406	9,028	4,378	1.03
<b>TOTAL OTHER PELAGICS</b>	<b>24,398</b>	<b>10,147</b>	<b>14,251</b>	<b>1.87</b>
<b>NON-PMUS</b>				
Pelagic fishes (unknown)	745	19	726	0.06
<b>TOTAL NON-PMUS</b>	<b>745</b>	<b>19</b>	<b>726</b>	<b>0.06</b>
<b>TOTAL ALL SPECIES</b>	<b>327,183</b>	<b>286,797</b>	<b>40,386</b>	<b>25.04</b>

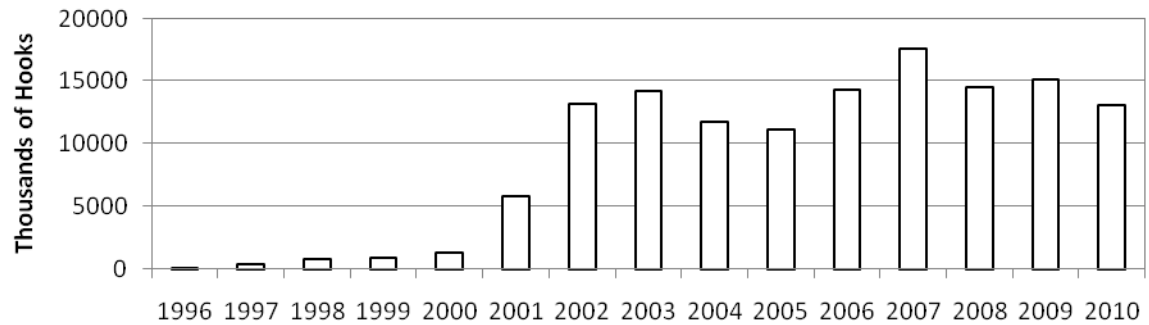
**Figure 1. American Samoa Longline Vessels by Year**



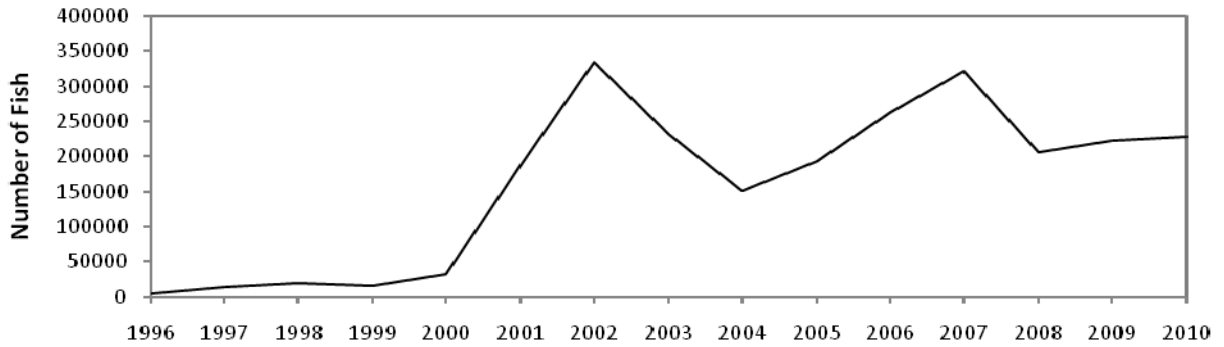
**Figure 2. Number of Sets by American Samoa Longline Vessels by Year**



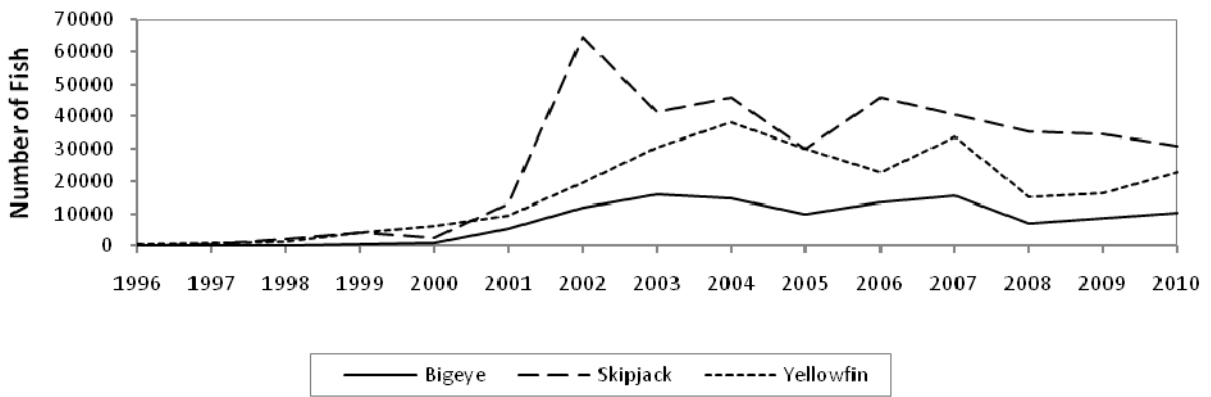
**Figure 3. Number of Hooks Set by the American Samoa Longline Fleet by Year**



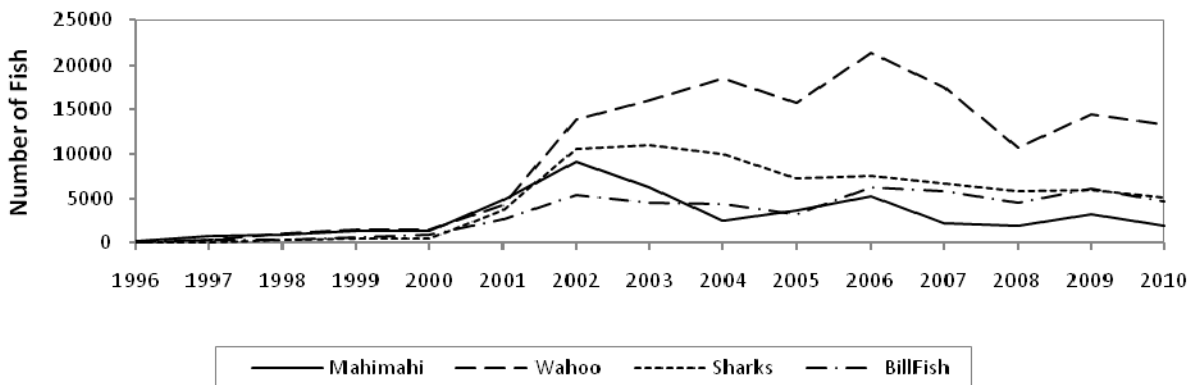
**Figure 4. American Samoa Longline Albacore Catch by Year**



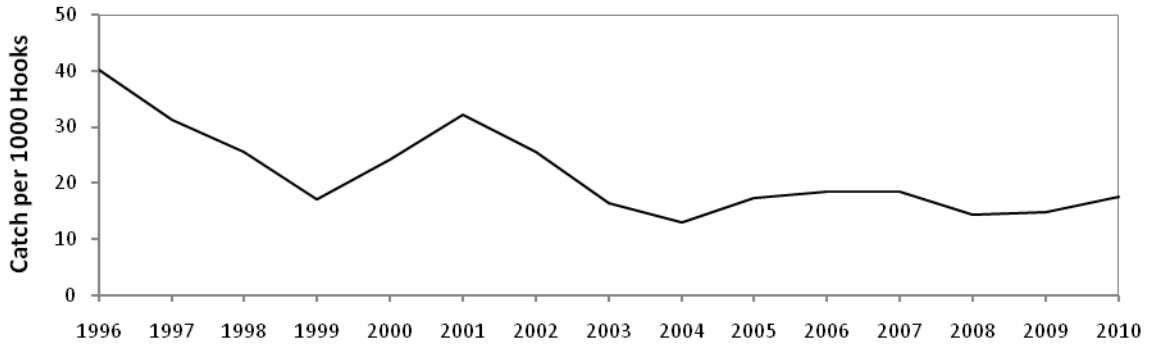
**Figure 5. American Samoa Longline Tuna Catch by Year**



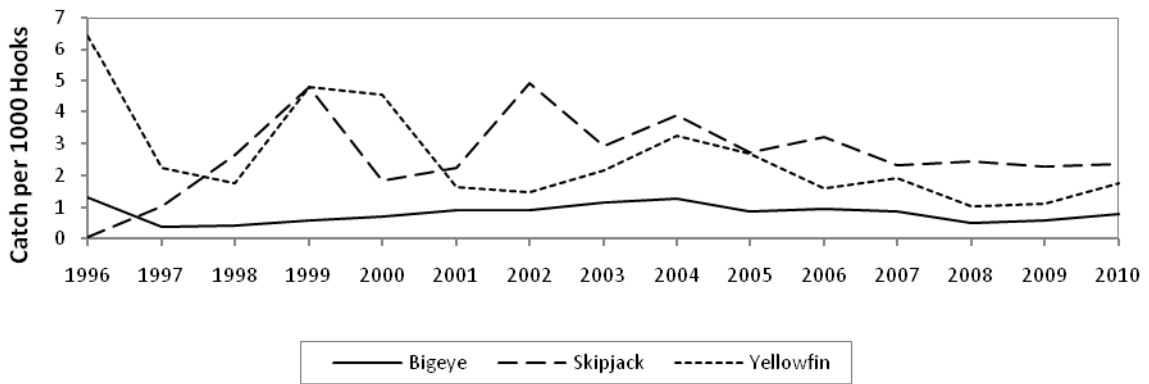
**Figure 6. American Samoa Longline Catch of Miscellaneous Pelagic Fish by Year**



**Figure 7. American Samoa Longline Albacore Catch per 1000 Hooks by Year**



**Figure 8. American Samoa Longline Tuna Catch per 1000 Hooks by Year**



**Figure 9. American Samoa Longline Catch of Other Pelagic Fish per 1000 Hooks by Year**

