

**COMMONWEALTH OF THE NORTHERN MARIANA ISLANDS
2003 FISHERY STATISTICS**

Compiled by
Division of Fish and Wildlife
and the
Western Pacific Fishery Information Network

May 2005

CONTENTS

	Page
Introduction	B.1
Data Collecting System	B.2
Data Processing System	B.3
Data Reporting System	B.3
Tables	B.6
Figures	B.19

LIST OF CNMI SUMMARY TABLES

Table	Title	Page
B-1	2003 Estimated Commercial Landings	B.6
B-2	January 2003 Estimated Commercial Landings	B.7
B-3	February 2003 Estimated Commercial Landings	B.8
B-4	March 2003 Estimated Commercial Landings	B.9
B-5	April 2003 Estimated Commercial Landings	B.10
B-6	May 2003 Estimated Commercial Landings	B.11
B-7	June 2003 Estimated Commercial Landings	B.12
B-8	July 2003 Estimated Commercial Landings	B.13
B-9	August 2003 Estimated Commercial Landings	B.14
B-10	September 2003 Estimated Commercial Landings	B.15
B-11	October 2003 Estimated Commercial Landings	B.16
B-12	November 2003 Estimated Commercial Landings	B.17
B-13	December 2003 Estimated Commercial Landings	B.18

LIST OF CNMI FIGURES

Figure	Title	Page
B-1-1	2003 Fisheries Categories: Monthly Estimated Commercial Landings of Pelagic, Bottom, Reef, and Other Fish	B.19
B-1.2	2003 Monthly Estimated Commercial Landings of Tunas, PMUS, and BMUS	B.19
B-1-3	2003 Monthly Estimated Commercial Landings of Mahimahi, Wahoo, and Billfish	B.20
B-1-4	2003 Monthly Estimated Commercial Landings of Skipjack, Yellowfin, and Other Tunas	B.20
B-1-5	2003 Monthly Estimated Commercial Landings of Bigeye Scad, Emperors, and Onaga	B.21
B-2-1	1981-2003 Average Monthly Estimated Commercial Landings of Tunas, PMUS, and BMUS	B.21
B-2-2	1981-2003 Average Monthly Estimated Commercial Landings of Mahimahi, Wahoo, and Billfish	B.22
B-2-3	1981-2003 Average Monthly Estimated Commercial Landings of Skipjack, Yellowfin, and Other Tunas	B.22
B-2-4	1981-2003 Average Monthly Estimated Commercial Landings of Bigeye Scad, Emperors, and Onaga	B.23
B-2-5	1981-2003 Average Monthly Estimated Commercial Landings of Parrotfish, Spiny Lobster, and Rabbitfish	B.23
B-3-1	1981-2003 Annual Trend of Fisheries Categories: Estimated Commercial Landings of Pelagic, Bottom, Reef, and Other Fish	B.24
B-3-2	1981-2003 Annual Total Estimated Commercial Landings (Pounds and Dollars)	B.24
B-3-3	1981-2003 Annual Estimated Commercial Landings of Tunas, PMUS, and BMUS	B.25
B-3-4	1981-2003 Annual Estimated Commercial Landings of Mahimahi, Wahoo, and Billfish	B.25
B-3-5	1981-2003 Annual Estimated Commercial Landings of Skipjack, Yellowfin, and Other Tunas	B.26
B-3-6	1981-2003 Annual Estimated Commercial Landings of Bigeye Scad, Emperors, and Onaga	B.26
B-3-7	1981-2003 Annual Estimated Commercial Landings of Parrotfish, Spiny Lobster, and Rabbitfish	B.27

LIST OF CNMI FIGURES (cont.)

Figure	Title	Page
B-4-1	1981-2003 Monthly Estimated Commercial Landings of Wahoo	B.27
B-4-2	1981-2003 Monthly Estimated Commercial Landings of Mahimahi	B.28
B-4-3	1981-2003 Monthly Estimated Commercial Landings of Parrotfish	B.28
B-4-4	1981-2003 Monthly Estimated Commercial Landings of Dogtooth Tuna	B.29
B-4-5	1981-2003 Monthly Estimated Commercial Landings of Skipjack Tuna	B.29
B-4-6	1981-2003 Monthly Estimated Commercial Landings of Yellowfin Tuna	B.30
B-4-7	1981-2003 Monthly Estimated Commercial Landings of Emperors (Misc.)	B.30
B-4-8	1981-2003 Monthly Estimated Commercial Landings of Bigeye Scad	B.31
B-4-9	1981-2003 Monthly Estimated Commercial Landings of Onaga	B.31
B-4-10	1981-2003 Monthly Estimated Commercial Landings of Spiny Lobster	B.32
B-4-11	1981-2003 Monthly Estimated Commercial Landings of Rabbitfish	B.32

COMMONWEALTH OF THE NORTHERN MARIANA ISLANDS 2003 FISHERY STATISTICS

INTRODUCTION

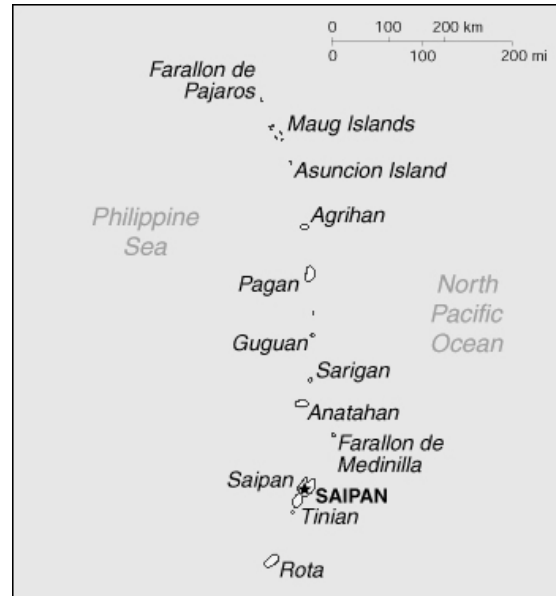
Location: 14° to 21°N latitude, 145°E longitude

Main Islands: Saipan, Rota, Tinian

Population: about 78,000; (*The World Factbook*, 2004)

Economy: tourism, agriculture, garment production

The chief domestic commercial fishery of the CNMI is a small boat, one-day troll fishery, and most of the boats are 12- to 24-foot outboard-powered, runabout-type vessels. However, a few larger boats are used mainly for bottomfish fishing around the islands north of Saipan, and a small charter fleet also exists.



CNMI

Source: <<http://www.cia.gov/cia/publications/factbook/geos/cq.html>>;
The World Factbook

During 2003, 57 vessels were registered as full-time commercial fishing boats, and 38 were part-time. Also, 22 vessels were registered as “charter” for their primary use, and 344 boats were non-fishing or recreational.

Trolling is by far the most common fishing method, but bottomfishing and reef fishing are also popular. Reef fish make up a significant portion of the total commercial catch and are an important component of the local diet. In recent years, several larger boats started fishing more intensively for bottomfish around the islands north of Saipan. While the vast majority of the domestic catch is consumed locally, there have been some exports to Guam, Hawaii, and Japan.

In 1982 WPacFIN significantly improved data collecting and processing systems by providing computer hardware, software, and training. Since then numerous system upgrades and replacements have been implemented to keep up with changing technologies and the increasing demands for improved fisheries statistics.

B.2

DATA COLLECTING SYSTEM

The Division of Fish and Wildlife (DFW) has been collecting fishery statistics on the commercial fishing fleet of Saipan since the mid-1970s. With the assistance of the NMFS WPacFIN program, DFW also expanded its fisheries monitoring programs to include Rota and Tinian, the other two major inhabited islands in the CNMI.

DFW's principal method of collecting domestic commercial fisheries data is a dealer invoicing system, sometimes referred to as a "trip ticket" system. The DFW provides numbered two-part invoices to all purchasers of fresh fishery products (including hotels, restaurants, stores, fish markets, and roadside vendors). Dealers then complete an invoice each time they purchase fish directly from fishermen; one copy goes to DFW and one copy goes to their records.

Some advantages of this data collection method are that it is relatively inexpensive to implement and maintain, is fairly easy to get complete coverage of the commercial fisheries, and DFW can provide feedback to dealers and fishermen to ensure data accuracy and continued cooperation.

There are some disadvantages: 1) dependency on non-DFW personnel to identify the catch and record the data; 2) restrictions on the types of data that can be collected; 3) required education and cooperation of all fish purchasers; and 4) limited recordings of fish actually sold to dealers. Therefore, a potentially important portion of the total landings is unrecorded.

Since 1982 DFW has tried to minimize these disadvantages in several ways: 1) maintain a close working relationship with dealers; 2) add new dealers to their list and educate them; and 3) implement a creel survey to help estimate total catch, including recreational and subsistence catch.

The current system collects data from dealers in Saipan, where DFW estimates over 90% of all CNMI commercial landings are made. The DFW also estimates that the proportion of total commercial landings that have been recorded in the Saipan database since 1983 is about 90%. Previous volumes of FSWP reported only recorded landings, but in recent volumes the data have been adjusted to represent 100% coverage and are referenced as "Estimated Commercial Landings" in the tables and charts.

Information collected from the fishermen includes the following:

- Date
- Buyer's Name (dealer)
- Seller's Name (fisherman)
- Species
- Weight (pounds)
- Price per Pound
- Value
- Invoice Number

These data elements are collected for all purchases of fishery products; however, species identification is frequently made only to a group level, especially for reef fish.

DATA PROCESSING SYSTEM

At the beginning of each month, a DFW employee visits each of the dealers on Saipan to collect the previous month's invoices, to resolve problems, and to answer any questions the dealers may have. The invoices are then returned to the office for an initial visual edit during the coding process and entered into the Commercial Purchase System database. After the records are entered, reports are generated to help verify that all data were entered correctly. On a quarterly basis, copies of the database are sent to the Pacific Islands Fisheries Science Center, where the data are transferred to the central computer for additional verification before generating summary reports. These reports and databases are then ready for use by qualified WPacFIN participants.

DATA REPORTING SYSTEM

After all editing, adjustment, and quality control activities have been completed, monthly and annual summary reports by species are generated. Each monthly report contains a subtotal for the sum of all species for that month. Annual reports contain the total landings for each species and the total recorded landings for all species for the calendar year.

Please note that commercial landings data have been adjusted to reflect total coverage and are referenced as "Estimated Commercial Landings" in the charts and tables. Also, some of the charts in this volume are new or modified from earlier volumes.

To access the most up-to-date data and charts, please visit the WPacFIN Website at <<http://www.pifsc.noaa.gov/wpacfin>>.

The following species, species groups, and abbreviations are used in the tables and graphs of CNMI's data:

Note: Many of the species included in this report have been recategorized over the years. For example, the Magnuson Fishery Conservation and Management Act of 1976 was amended in 1992 to include tunas in the Pelagic Management Unit Species (PMUS) category. However, this FSWP volume will maintain the original species categorizations from previous volumes for comparative purposes. As such, tunas are kept in a separate category.

I. Pelagic Management Unit Species (PMUS)

- Mahimahi (dolphin)
- Marlin
- Shortbill Spearfish
- Sailfish
- Wahoo
- Sharks

B.4

II. Bottomfish Management Unit Species (BMUS)

Jacks (unclassified, but excluding bigeye scad)
Amberjack
Bottomfish (unclassified)
Ehu (red snapper)
Gindai (flower snapper)
Grouper (unclassified)
Kalekale (pink snapper)
Lehi (silverjaw snapper)
Onaga (red or longtail snapper)
Opakapaka (pink snapper)
Uku (gray snapper)
Emperorfish

III. Billfish

Marlin (probably all blue marlin but could also include the rarely landed striped and black marlins)
Shortbill Spearfish
Sailfish

IV. Tunas

Tunas (unclassified)
Skipjack Tuna
Yellowfin Tuna

IV. Tunas (cont.)

Dogtooth Tuna

V. Other Tuna

The above tunas excluding skipjack and yellowfin tunas

VI. Fisheries Categories

A. Pelagics

All PMUS and tuna species plus the following:
Troll Fish (unclassified)
Barracuda
Rainbow Runner

B.5

B. Bottomfish

Same as BMUS

C. Reef Fish

Reef Fish (unclassified)

Giant Wrasse

Rabbitfish (hitting, hitting feda, menahac, and sesjun)

Rudderfish

Squirrelfish

Parrotfish

Snapper

Surgeonfish

Unicornfish

Goatfish

D. Other

Miscellaneous

Mullet

Milkfish

Crabs (unclassified)

Lobster

Octopus

Turtle

Bigeye Scad

Eels

Invertebrates (unclassified)

Coconut Crab

Shrimp

Squid

Seaweeds

Imported

B.6

Table B-1
2003 Estimated Commercial Landings

Species	Pounds	Value	Price/Lb.
Miscellaneous	38	\$75	\$2.00
Bigeye Scad	15,119	\$36,074	\$2.39
Jacks (Misc.)	3,685	\$8,374	\$2.27
Mullet	8	\$20	\$2.50
Blackjack	138	\$337	\$2.45
Giant Trevally	26	\$66	\$2.50
Brassy Trevally	725	\$1,794	\$2.47
Bottom Fish	6,526	\$17,549	\$2.69
Sickle Pomfret	772	\$1,791	\$2.32
Ehu (Red Snapper)	729	\$1,918	\$2.63
Gindai (Flower Snap)	2,550	\$7,706	\$3.02
Grouper (Misc.)	4,906	\$12,711	\$2.59
Kalikali (Yellowtail)	3,090	\$8,861	\$2.87
Onaga (Red Snapper)	6,649	\$22,978	\$3.46
Opakapaka (Pink Snp)	2,262	\$7,424	\$3.28
Jobfish (Uku)	597	\$1,407	\$2.36
Silvermouth (Deep Lehi)	1,624	\$4,597	\$2.83
Amberjack	322	\$835	\$2.59
Blueline Snapper	75	\$177	\$2.34
Reef Fish	83,773	\$213,862	\$2.55
Rabbitfish	7,294	\$24,135	\$3.31
Emperor (Mafute/misc.)	7,999	\$22,392	\$2.80
Parrotfish (Misc.)	1,372	\$3,851	\$2.81
Surgeonfish (Misc.)	11	\$21	\$2.00
Orangespine Unicornfish	143	\$347	\$2.44
Unicornfish (Misc.)	413	\$1,002	\$2.43
Goatfish (Misc.)	259	\$767	\$2.96
Mahimahi	7,357	\$16,617	\$2.26
Blue Marlin	1,130	\$1,929	\$1.71
Sailfish	137	\$214	\$1.56
Rainbow Runner	4,385	\$8,414	\$1.92
Wahoo	7,950	\$16,213	\$2.04
Skipjack Tuna	171,574	\$332,857	\$1.94
Dogtooth Tuna	7,842	\$12,369	\$1.58
Yellowfin Tuna	26,042	\$55,059	\$2.11
Saba (Kawakawa)	1,228	\$2,183	\$1.78
Spiny Lobster	738	\$4,633	\$6.28
Octopus	1,491	\$3,238	\$2.17
Squid	4	\$8	\$2.00
TOTAL	380,982	\$854,802	\$2.24

Table B-2
January 2003 Estimated Commercial Landings

Species	Pounds	Value	Price/Lb.
Bigeye Scad	41	\$103	\$2.50
Jacks (Misc.)	1,144	\$2,286	\$2.00
Brassy Trevally	26	\$59	\$2.25
Bottom Fish	343	\$1,178	\$3.44
Sickle Pomfret	31	\$31	\$1.00
Ehu (Red Snapper)	134	\$305	\$2.28
Gindai (Flower Snap)	201	\$601	\$2.99
Grouper (Misc.)	611	\$1,463	\$2.40
Onaga (Red Snapper)	1,818	\$5,897	\$3.24
Opakapaka (Pink Snp)	103	\$241	\$2.35
Jobfish (Uku)	33	\$73	\$2.23
Silvermouth (Deep Lehi)	606	\$1,621	\$2.68
Blueline Snapper	51	\$128	\$2.50
Reef Fish	11,796	\$31,109	\$2.64
Rabbitfish	900	\$3,028	\$3.37
Emperor (Mafute/misc.)	1,020	\$3,090	\$3.03
Goatfish (Misc.)	9	\$18	\$2.00
Mahimahi	1,773	\$3,986	\$2.25
Rainbow Runner	106	\$233	\$2.21
Wahoo	325	\$647	\$1.99
Skipjack Tuna	12,486	\$29,175	\$2.34
Dogtooth Tuna	1,493	\$2,418	\$1.62
Yellowfin Tuna	2,537	\$5,315	\$2.09
Saba (Kawakawa)	113	\$213	\$1.89
Spiny Lobster	60	\$349	\$5.81
Octopus	172	\$355	\$2.06
TOTAL	37,930	\$93,919	\$2.48

B.8

Table B-3
February 2003 Estimated Commercial Landings

<u>Species</u>	<u>Pounds</u>	<u>Value</u>	<u>Price/Lb.</u>
Bigeye Scad	561	\$1,365	\$2.43
Jacks (Misc.)	388	\$802	\$2.07
Bottom Fish	146	\$366	\$2.50
Sickle Pomfret	19	\$38	\$2.00
Gindai (Flower Snap)	216	\$647	\$3.00
Grouper (Misc.)	734	\$1,786	\$2.43
Onaga (Red Snapper)	1,265	\$4,307	\$3.41
Opakapaka (Pink Snp)	277	\$936	\$3.39
Jobfish (Uku)	16	\$33	\$2.00
Silvermouth (Deep Lehi)	72	\$180	\$2.50
Amberjack	28	\$69	\$2.50
Reef Fish	11,108	\$28,302	\$2.55
Rabbitfish	1,550	\$5,167	\$3.33
Emperor (Mafute/misc.)	799	\$2,359	\$2.95
Parrotfish (Misc.)	133	\$333	\$2.50
Unicornfish (Misc.)	71	\$177	\$2.48
Mahimahi	1,013	\$2,031	\$2.01
Rainbow Runner	280	\$550	\$1.97
Wahoo	1,096	\$2,223	\$2.03
Skipjack Tuna	12,659	\$25,034	\$1.98
Dogtooth Tuna	1,467	\$2,340	\$1.59
Yellowfin Tuna	1,507	\$3,022	\$2.00
Saba (Kawakawa)	11	\$17	\$1.50
Spiny Lobster	50	\$300	\$6.00
Octopus	243	\$506	\$2.08
TOTAL	35,709	\$82,888	\$2.32

Table B-4
March 2003 Estimated Commercial Landings

Species	Pounds	Value	Price/Lb.
Miscellaneous	38	\$75	\$2.00
Bigeye Scad	167	\$450	\$2.69
Jacks (Misc.)	264	\$659	\$2.50
Brassy Trevally	53	\$166	\$3.17
Bottom Fish	521	\$1,442	\$2.77
Ehu (Red Snapper)	14	\$41	\$3.00
Onaga (Red Snapper)	128	\$449	\$3.50
Opakapaka (Pink Snp)	9	\$31	\$3.50
Jobfish (Uku)	66	\$133	\$2.00
Reef Fish	8,571	\$23,630	\$2.76
Rabbitfish	721	\$2,352	\$3.26
Emperor (Mafute/misc.)	1,041	\$2,910	\$2.80
Parrotfish (Misc.)	156	\$464	\$2.97
Surgeonfish (Misc.)	11	\$21	\$2.00
Orangespine Unicornfish	60	\$150	\$2.50
Unicornfish (Misc.)	31	\$78	\$2.50
Mahimahi	1,641	\$3,853	\$2.35
Blue Marlin	418	\$626	\$1.50
Rainbow Runner	143	\$287	\$2.01
Wahoo	1,996	\$3,251	\$1.63
Skipjack Tuna	19,930	\$39,955	\$2.00
Dogtooth Tuna	2,241	\$3,219	\$1.44
Yellowfin Tuna	1,342	\$2,913	\$2.17
Saba (Kawakawa)	138	\$206	\$1.50
Spiny Lobster	60	\$333	\$5.55
Octopus	152	\$326	\$2.15
TOTAL	39,910	\$88,020	\$2.21

Table B-5
April 2003 Estimated Commercial Landings

<u>Species</u>	<u>Pounds</u>	<u>Value</u>	<u>Price/Lb.</u>
Bigeye Scad	21	\$63	\$3.00
Jacks (Misc.)	23	\$68	\$3.00
Bottom Fish	238	\$564	\$2.37
Sickle Pomfret	50	\$75	\$1.50
Ehu (Red Snapper)	70	\$175	\$2.50
Gindai (Flower Snap)	437	\$1,262	\$2.89
Grouper (Misc.)	476	\$1,221	\$2.56
Onaga (Red Snapper)	1,182	\$4,161	\$3.52
Jobfish (Uku)	19	\$38	\$2.00
Reef Fish	6,400	\$16,529	\$2.58
Rabbitfish	345	\$1,152	\$3.34
Emperor (Mafute/misc.)	661	\$1,887	\$2.85
Parrotfish (Misc.)	78	\$258	\$3.32
Mahimahi	1,278	\$2,967	\$2.32
Blue Marlin	67	\$101	\$1.50
Sailfish	31	\$55	\$1.75
Rainbow Runner	88	\$188	\$2.14
Wahoo	483	\$1,038	\$2.15
Skipjack Tuna	16,059	\$31,114	\$1.94
Yellowfin Tuna	1,001	\$2,043	\$2.04
Spiny Lobster	48	\$263	\$5.53
Octopus	11	\$25	\$2.25
TOTAL	29,065	\$65,243	\$2.24

B.11

Table B-6
May 2003 Estimated Commercial Landings

Species	Pounds	Value	Price/Lb.
Bigeye Scad	88	\$158	\$1.80
Jacks (Misc.)	636	\$1,396	\$2.19
Brassy Trevally	116	\$274	\$2.36
Bottom Fish	272	\$698	\$2.57
Sickle Pomfret	26	\$53	\$2.00
Ehu (Red Snapper)	96	\$237	\$2.46
Gindai (Flower Snap)	469	\$1,406	\$3.00
Grouper (Misc.)	544	\$1,088	\$2.00
Kalikali (Yellowtail)	363	\$906	\$2.50
Onaga (Red Snapper)	622	\$2,194	\$3.53
Opakapaka (Pink Snp)	66	\$232	\$3.50
Jobfish (Uku)	78	\$213	\$2.72
Silvermouth (Deep Lehi)	121	\$364	\$3.00
Amberjack	15	\$38	\$2.50
Blueline Snapper	12	\$18	\$1.50
Reef Fish	6,693	\$17,377	\$2.60
Rabbitfish	236	\$801	\$3.39
Emperor (Mafute/misc.)	129	\$451	\$3.50
Parrotfish (Misc.)	141	\$502	\$3.57
Mahimahi	214	\$463	\$2.16
Blue Marlin	111	\$223	\$2.00
Rainbow Runner	32	\$71	\$2.22
Wahoo	400	\$707	\$1.77
Skipjack Tuna	16,015	\$29,961	\$1.87
Dogtooth Tuna	903	\$1,179	\$1.31
Yellowfin Tuna	1,230	\$2,071	\$1.68
Saba (Kawakawa)	6	\$9	\$1.50
Spiny Lobster	29	\$157	\$5.45
TOTAL	29,663	\$63,243	\$2.13

Table B-7
June 2003 Estimated Commercial Landings

<u>Species</u>	<u>Pounds</u>	<u>Value</u>	<u>Price/Lb.</u>
Bigeye Scad	422	\$1,341	\$3.18
Jacks (Misc.)	173	\$519	\$3.00
Brassy Trevally	94	\$216	\$2.31
Bottom Fish	981	\$2,623	\$2.67
Ehu (Red Snapper)	96	\$263	\$2.73
Gindai (Flower Snap)	230	\$633	\$2.75
Grouper (Misc.)	15	\$41	\$2.75
Kalikali (Yellowtail)	1,093	\$3,555	\$3.25
Onaga (Red Snapper)	41	\$167	\$4.11
Opakapaka (Pink Snp)	745	\$2,583	\$3.47
Jobfish (Uku)	159	\$318	\$2.00
Silvermouth (Deep Lehi)	59	\$178	\$3.00
Amberjack	23	\$45	\$2.00
Reef Fish	6,264	\$15,048	\$2.40
Rabbitfish	454	\$1,463	\$3.22
Emperor (Mafute/misc.)	397	\$1,303	\$3.28
Parrotfish (Misc.)	44	\$109	\$2.50
Mahimahi	234	\$514	\$2.20
Blue Marlin	104	\$156	\$1.50
Rainbow Runner	417	\$871	\$2.09
Wahoo	134	\$268	\$2.00
Skipjack Tuna	12,432	\$23,337	\$1.88
Dogtooth Tuna	101	\$164	\$1.62
Yellowfin Tuna	2,263	\$4,799	\$2.12
Saba (Kawakawa)	39	\$39	\$1.00
Spiny Lobster	349	\$2,249	\$6.45
Octopus	32	\$69	\$2.16
TOTAL	27,392	\$62,871	\$2.30

B.13

Table B-8
July 2003 Estimated Commercial Landings

Species	Pounds	Value	Price/Lb.
Bigeye Scad	1,133	\$2,797	\$2.47
Jacks (Misc.)	188	\$517	\$2.75
Blackjack	124	\$309	\$2.50
Bottom Fish	1,010	\$2,588	\$2.56
Sickle Pomfret	86	\$232	\$2.69
Ehu (Red Snapper)	33	\$88	\$2.71
Gindai (Flower Snap)	149	\$464	\$3.12
Grouper (Misc.)	63	\$156	\$2.50
Kalikali (Yellowtail)	369	\$967	\$2.62
Onaga (Red Snapper)	172	\$619	\$3.60
Opakapaka (Pink Snp)	407	\$1,178	\$2.89
Jobfish (Uku)	63	\$173	\$2.74
Silvermouth (Deep Lehi)	323	\$955	\$2.96
Amberjack	38	\$103	\$2.75
Reef Fish	7,734	\$18,910	\$2.44
Rabbitfish	161	\$518	\$3.22
Emperor (Mafute/misc.)	406	\$1,109	\$2.73
Parrotfish (Misc.)	323	\$726	\$2.25
Orangespine Unicornfish	25	\$63	\$2.50
Unicornfish (Misc.)	245	\$581	\$2.37
Goatfish (Misc.)	25	\$100	\$4.00
Mahimahi	70	\$175	\$2.50
Blue Marlin	53	\$106	\$2.00
Sailfish	106	\$159	\$1.50
Rainbow Runner	283	\$568	\$2.01
Skipjack Tuna	10,634	\$18,042	\$1.70
Dogtooth Tuna	129	\$274	\$2.13
Yellowfin Tuna	2,139	\$4,108	\$1.92
Saba (Kawakawa)	368	\$730	\$1.99
Spiny Lobster	56	\$394	\$7.00
Octopus	99	\$247	\$2.50
TOTAL	27,010	\$57,955	\$2.15

Table B-9
August 2003 Estimated Commercial Landings

<u>Species</u>	<u>Pounds</u>	<u>Value</u>	<u>Price/Lb.</u>
Bigeye Scad	2,059	\$5,190	\$2.52
Jacks (Misc.)	288	\$774	\$2.69
Brassy Trevally	162	\$552	\$3.41
Bottom Fish	679	\$1,771	\$2.61
Sickle Pomfret	40	\$120	\$3.00
Ehu (Red Snapper)	44	\$115	\$2.62
Gindai (Flower Snap)	188	\$559	\$2.98
Grouper (Misc.)	264	\$738	\$2.80
Kalikali (Yellowtail)	250	\$796	\$3.19
Onaga (Red Snapper)	169	\$592	\$3.50
Jobfish (Uku)	62	\$155	\$2.50
Silvermouth (Deep Lehi)	28	\$99	\$3.60
Amberjack	19	\$47	\$2.50
Reef Fish	5,570	\$13,852	\$2.49
Rabbitfish	545	\$1,859	\$3.41
Emperor (Mafute/misc.)	1,228	\$3,605	\$2.94
Parrotfish (Misc.)	102	\$255	\$2.50
Orangespine Unicornfish	18	\$36	\$2.00
Unicornfish (Misc.)	53	\$133	\$2.50
Mahimahi	3	\$4	\$1.50
Rainbow Runner	806	\$1,598	\$1.98
Wahoo	81	\$184	\$2.27
Skipjack Tuna	17,490	\$33,380	\$1.91
Dogtooth Tuna	77	\$115	\$1.50
Yellowfin Tuna	2,450	\$5,339	\$2.18
Saba (Kawakawa)	6	\$13	\$2.00
Spiny Lobster	19	\$116	\$6.00
Octopus	174	\$375	\$2.15
TOTAL	32,872	\$72,371	\$2.20

Table B-10
September 2003 Estimated Commercial Landings

Species	Pounds	Value	Price/Lb.
Bigeye Scad	3,822	\$8,966	\$2.35
Jacks (Misc.)	376	\$858	\$2.28
Brassy Trevally	129	\$230	\$1.78
Bottom Fish	1,082	\$3,064	\$2.83
Sickle Pomfret	67	\$150	\$2.25
Ehu (Red Snapper)	15	\$38	\$2.50
Gindai (Flower Snap)	339	\$1,186	\$3.50
Grouper (Misc.)	1,182	\$3,286	\$2.78
Kalikali (Yellowtail)	261	\$643	\$2.46
Onaga (Red Snapper)	681	\$2,476	\$3.64
Opakapaka (Pink Snp)	225	\$655	\$2.91
Jobfish (Uku)	60	\$150	\$2.50
Silvermouth (Deep Lehi)	321	\$920	\$2.87
Amberjack	84	\$251	\$3.00
Reef Fish	3,702	\$8,921	\$2.41
Rabbitfish	359	\$1,174	\$3.27
Emperor (Mafute/misc.)	229	\$617	\$2.70
Parrotfish (Misc.)	135	\$337	\$2.49
Orangespine Unicornfish	39	\$98	\$2.50
Goatfish (Misc.)	14	\$36	\$2.50
Mahimahi	144	\$287	\$1.99
Blue Marlin	63	\$125	\$2.00
Rainbow Runner	343	\$614	\$1.79
Wahoo	1,099	\$2,244	\$2.04
Skipjack Tuna	17,904	\$31,499	\$1.76
Dogtooth Tuna	157	\$256	\$1.63
Yellowfin Tuna	2,563	\$5,242	\$2.05
Saba (Kawakawa)	89	\$126	\$1.42
Spiny Lobster	49	\$341	\$7.00
Octopus	48	\$100	\$2.11
TOTAL	35,580	\$74,892	\$2.10

Table B-11
October 2003 Estimated Commercial Landings

Species	Pounds	Value	Price/Lb.
Bigeye Scad	2,786	\$6,873	\$2.47
Jacks (Misc.)	159	\$398	\$2.50
Giant Trevally	26	\$66	\$2.50
Brassy Trevally	145	\$297	\$2.05
Bottom Fish	955	\$2,355	\$2.47
Sickle Pomfret	44	\$118	\$2.69
Ehu (Red Snapper)	228	\$656	\$2.88
Gindai (Flower Snap)	311	\$919	\$2.95
Grouper (Misc.)	450	\$1,266	\$2.81
Kalikali (Yellowtail)	651	\$1,643	\$2.53
Onaga (Red Snapper)	347	\$1,156	\$3.34
Opakapaka (Pink Snp)	314	\$1,098	\$3.50
Silvermouth (Deep Lehi)	95	\$281	\$2.95
Amberjack	85	\$186	\$2.19
Reef Fish	5,010	\$12,760	\$2.55
Rabbitfish	559	\$1,893	\$3.38
Emperor (Mafute/misc.)	1,719	\$4,083	\$2.38
Parrotfish (Misc.)	71	\$204	\$2.86
Unicornfish (Misc.)	9	\$23	\$2.50
Goatfish (Misc.)	145	\$450	\$3.10
Mahimahi	233	\$383	\$1.65
Rainbow Runner	1,568	\$2,773	\$1.77
Wahoo	818	\$2,035	\$2.49
Skipjack Tuna	13,187	\$23,278	\$1.77
Dogtooth Tuna	361	\$652	\$1.81
Yellowfin Tuna	5,440	\$11,682	\$2.15
Saba (Kawakawa)	180	\$263	\$1.46
Spiny Lobster	19	\$131	\$7.00
Octopus	151	\$336	\$2.22
TOTAL	36,063	\$78,258	\$2.17

Table B-12
November 2003 Estimated Commercial Landings

Species	Pounds	Value	Price/Lb.
Bigeye Scad	2,489	\$5,396	\$2.17
Jacks (Misc.)	46	\$98	\$2.11
Mullet	8	\$20	\$2.50
Blackjack	14	\$28	\$2.00
Bottom Fish	78	\$215	\$2.77
Sickle Pomfret	214	\$471	\$2.20
Gindai (Flower Snap)	11	\$29	\$2.61
Blueline Snapper	12	\$31	\$2.50
Reef Fish	4,326	\$10,895	\$2.52
Rabbitfish	704	\$2,298	\$3.26
Emperor (Mafute/misc.)	112	\$278	\$2.49
Parrotfish (Misc.)	171	\$601	\$3.52
Unicornfish (Misc.)	3	\$10	\$3.25
Goatfish (Misc.)	41	\$101	\$2.47
Mahimahi	245	\$595	\$2.43
Blue Marlin	315	\$593	\$1.88
Rainbow Runner	226	\$447	\$1.97
Wahoo	647	\$1,348	\$2.08
Skipjack Tuna	10,689	\$22,068	\$2.06
Dogtooth Tuna	189	\$370	\$1.96
Yellowfin Tuna	1,894	\$4,534	\$2.39
Saba (Kawakawa)	38	\$75	\$2.00
Octopus	303	\$669	\$2.21
Squid	4	\$8	\$2.00
TOTAL	22,778	\$51,175	\$2.25

Table B-13
December 2003 Estimated Commercial Landings

<u>Species</u>	<u>Pounds</u>	<u>Value</u>	<u>Price/Lb.</u>
Bigeye Scad	1,530	\$3,373	\$2.20
Bottom Fish	221	\$684	\$3.09
Sickle Pomfret	196	\$503	\$2.57
Grouper (Misc.)	569	\$1,666	\$2.93
Kalikali (Yellowtail)	105	\$350	\$3.34
Onaga (Red Snapper)	226	\$960	\$4.26
Opakapaka (Pink Snp)	118	\$470	\$4.00
Jobfish (Uku)	41	\$124	\$3.00
Amberjack	32	\$97	\$3.00
Reef Fish	6,598	\$16,530	\$2.51
Rabbitfish	760	\$2,431	\$3.20
Emperor (Mafute/misc.)	258	\$700	\$2.71
Parrotfish (Misc.)	19	\$63	\$3.25
Goatfish (Misc.)	25	\$63	\$2.50
Mahimahi	510	\$1,359	\$2.66
Rainbow Runner	94	\$213	\$2.26
Wahoo	870	\$2,269	\$2.61
Skipjack Tuna	12,090	\$26,016	\$2.15
Dogtooth Tuna	726	\$1,381	\$1.90
Yellowfin Tuna	1,676	\$3,992	\$2.38
Saba (Kawakawa)	241	\$493	\$2.04
Octopus	106	\$229	\$2.15
TOTAL	27,011	\$63,965	\$2.37

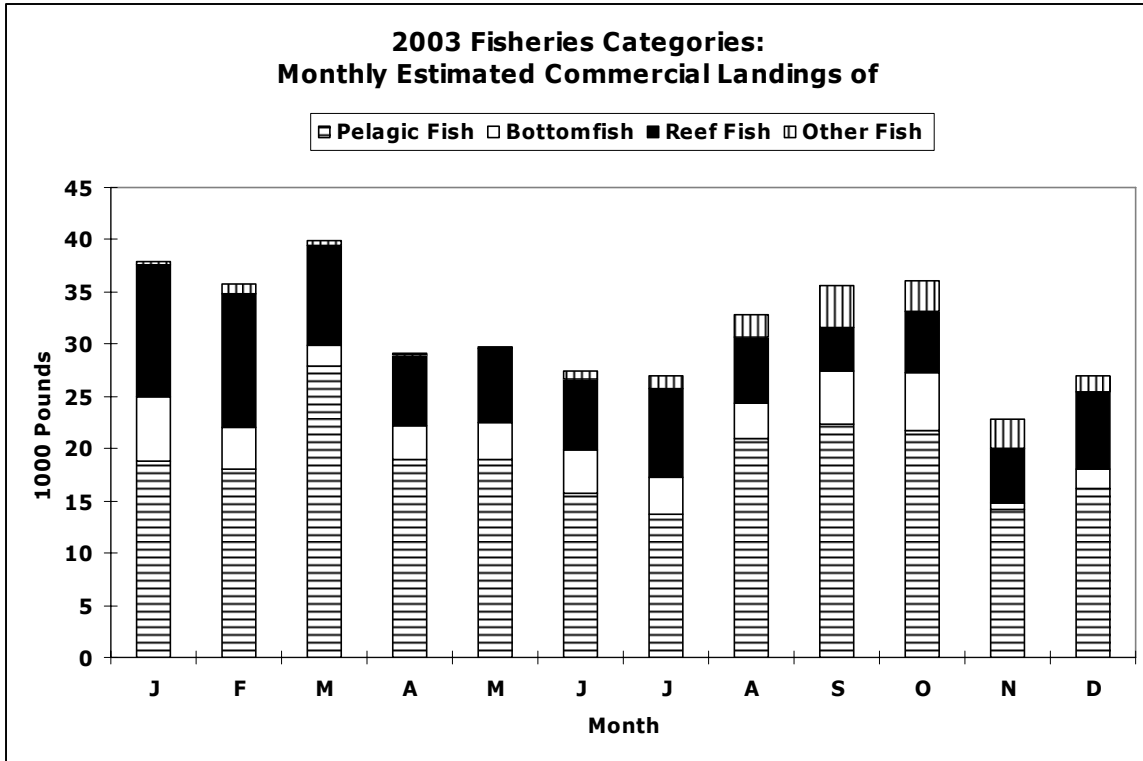


Figure B-1-1

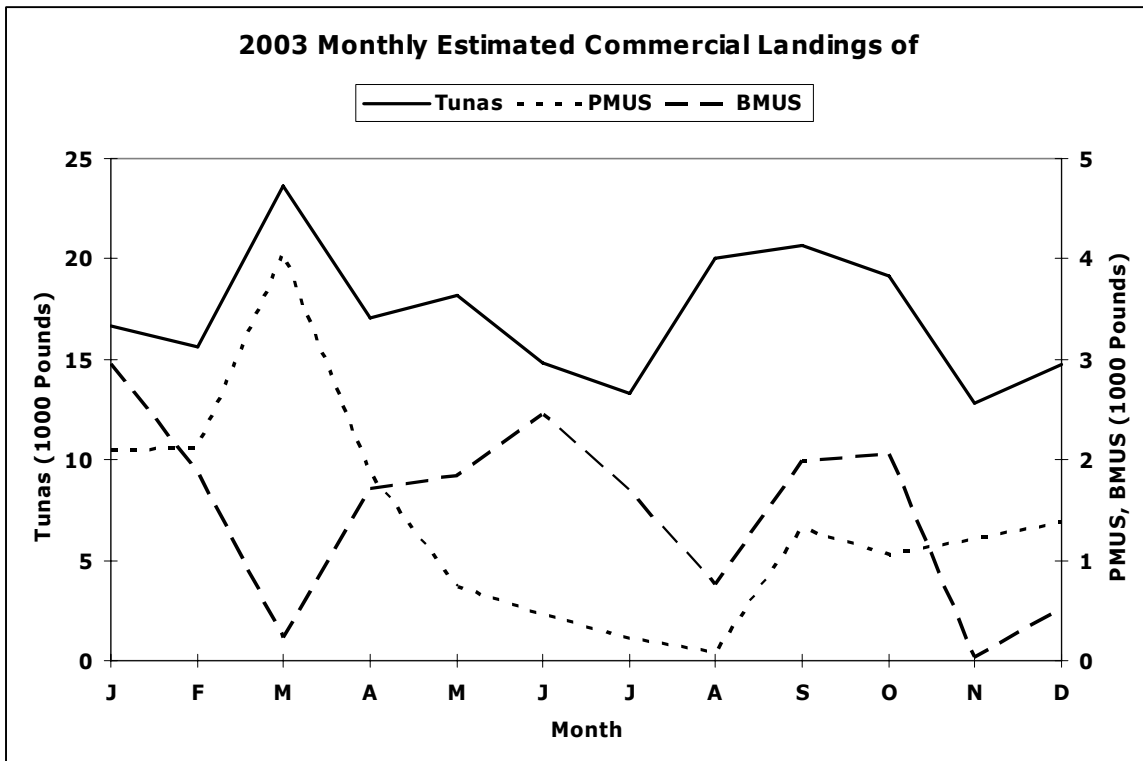


Figure B-1-2

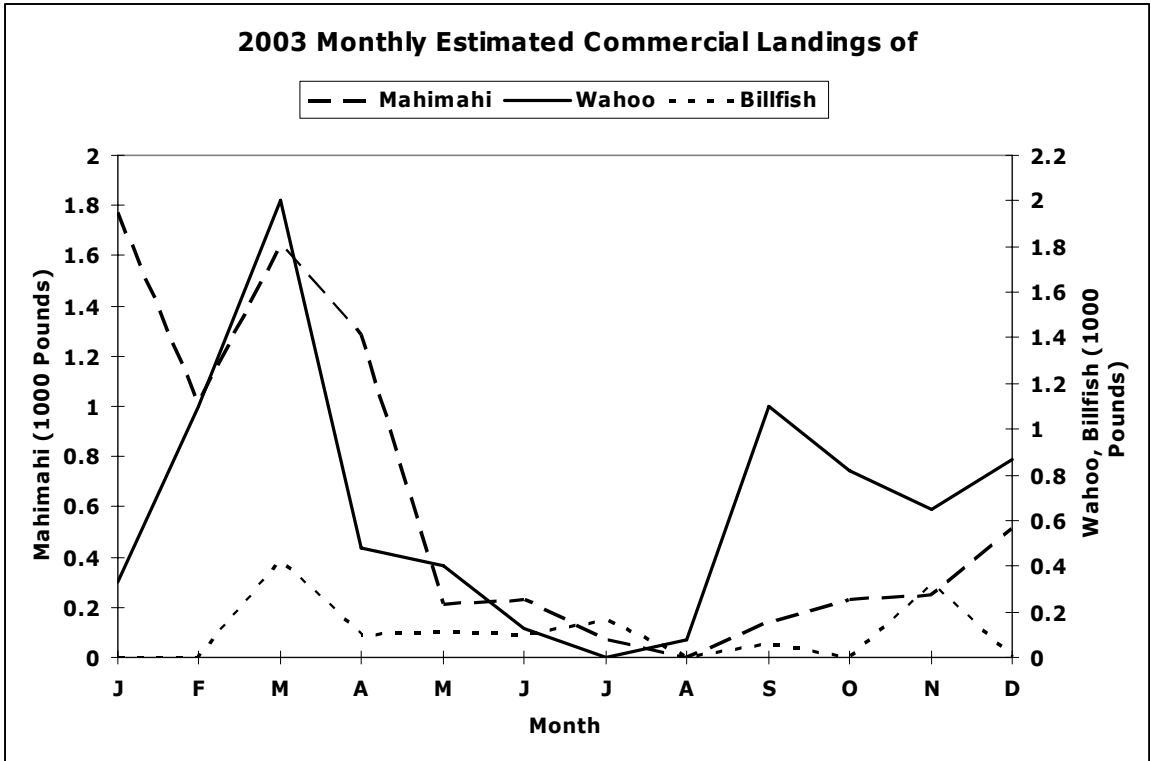


Figure B-1-3

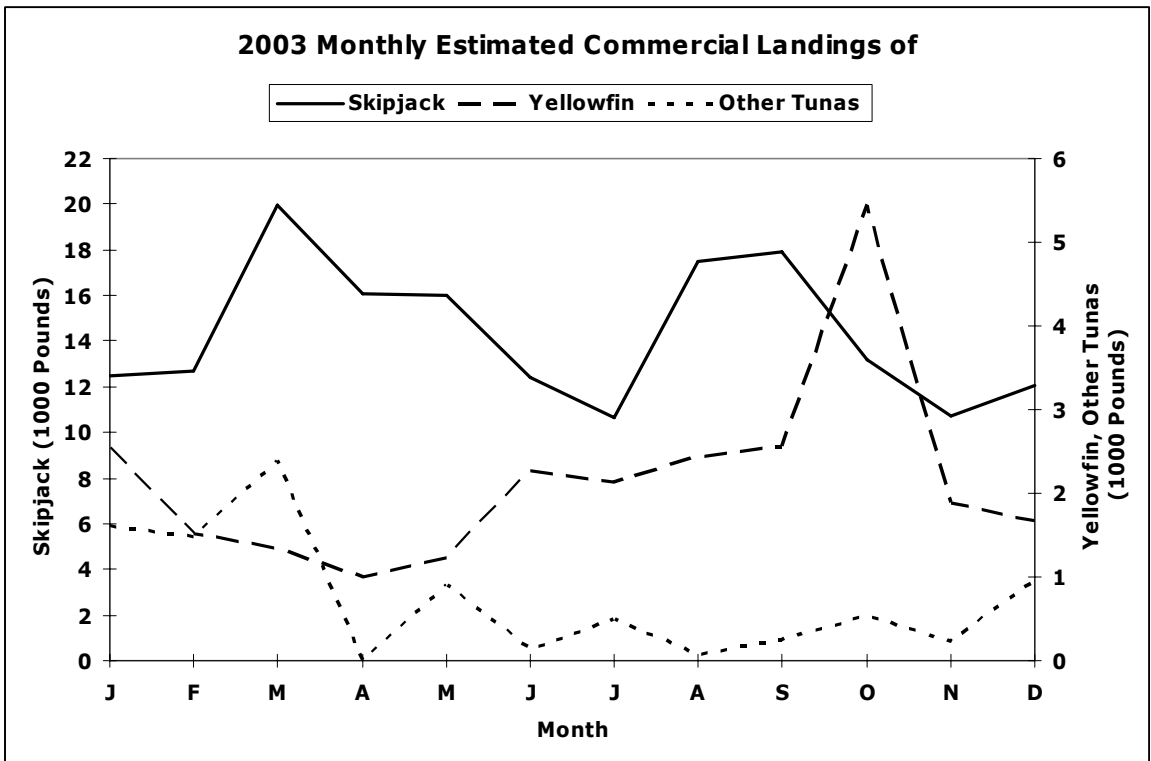


Figure B-1-4

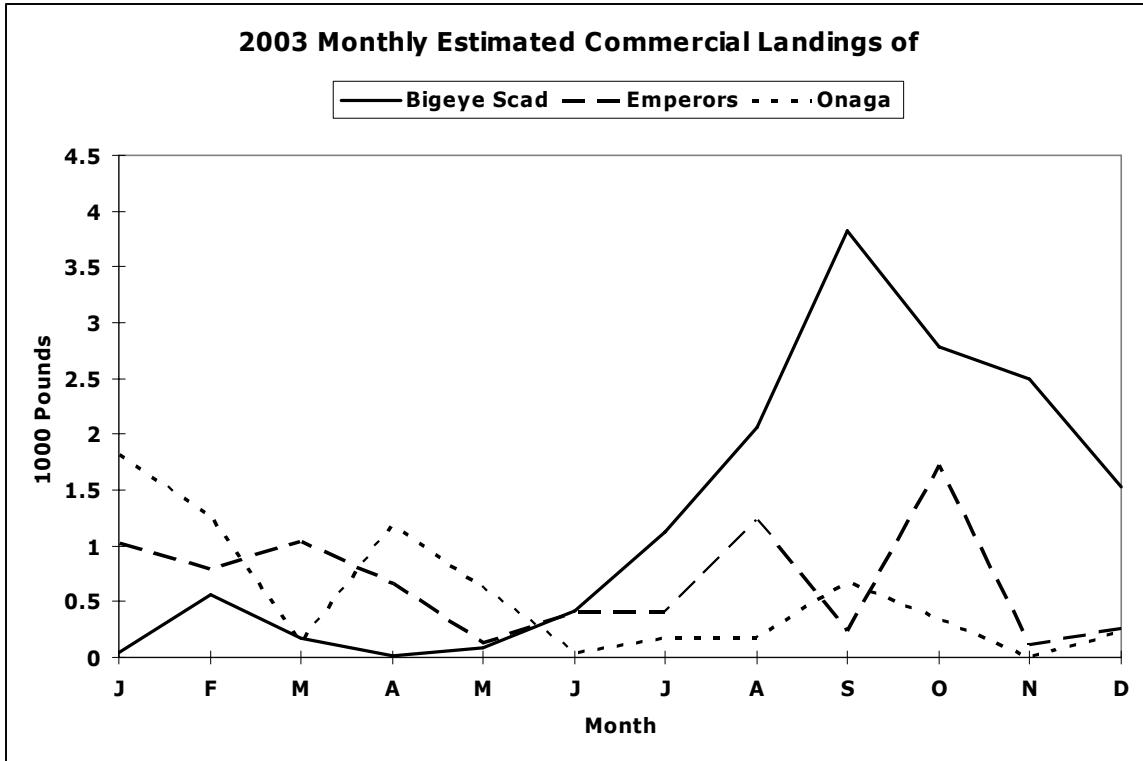


Figure B-1-5

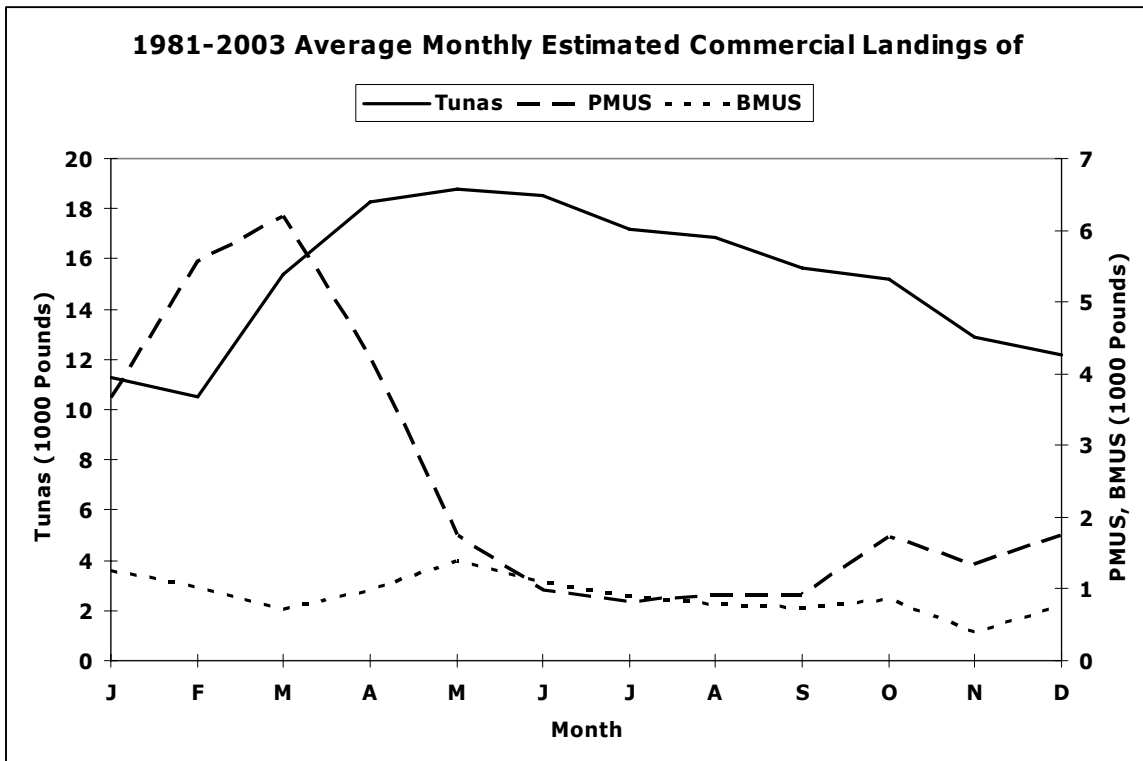


Figure B-2-1

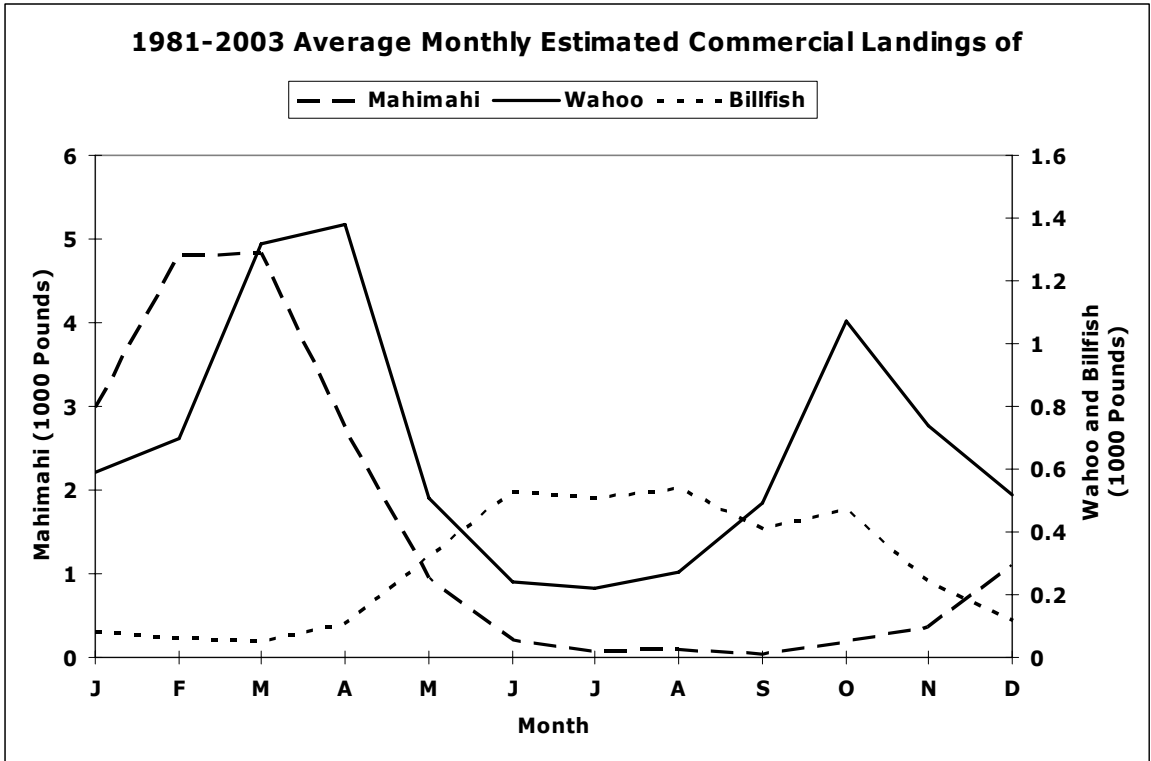


Figure B-2-2

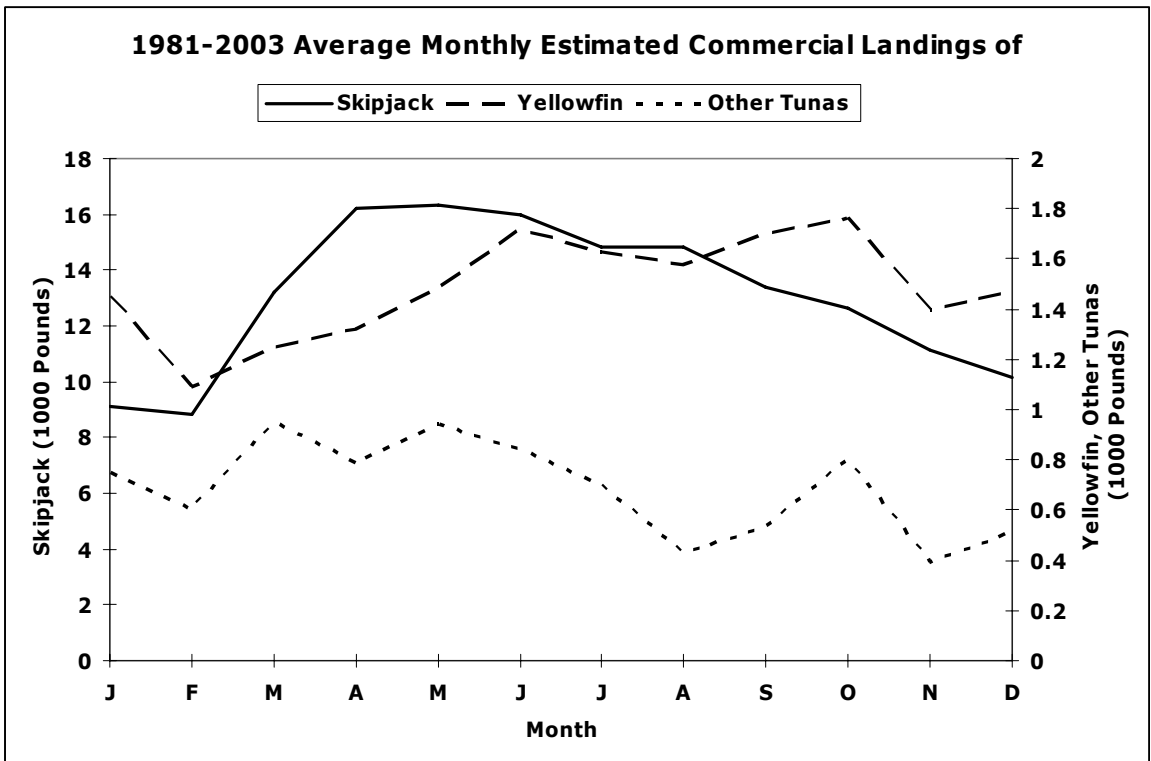


Figure B-2-3

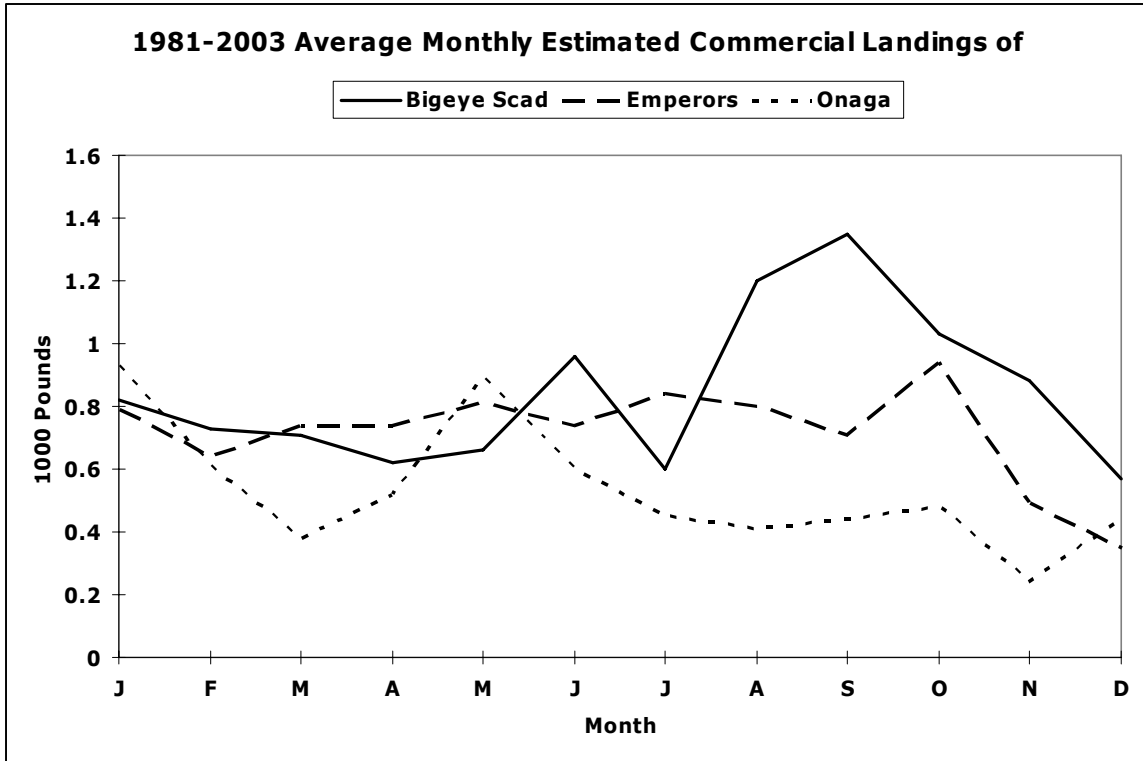


Figure B-2-4

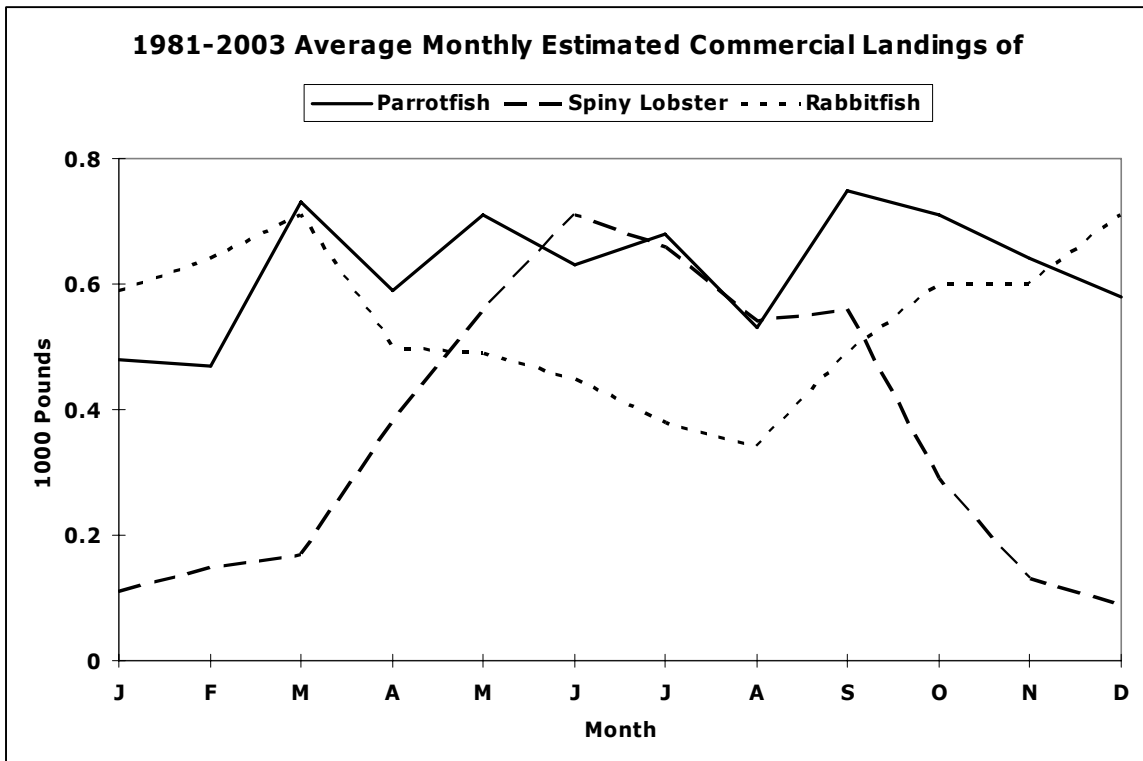


Figure B-2-5

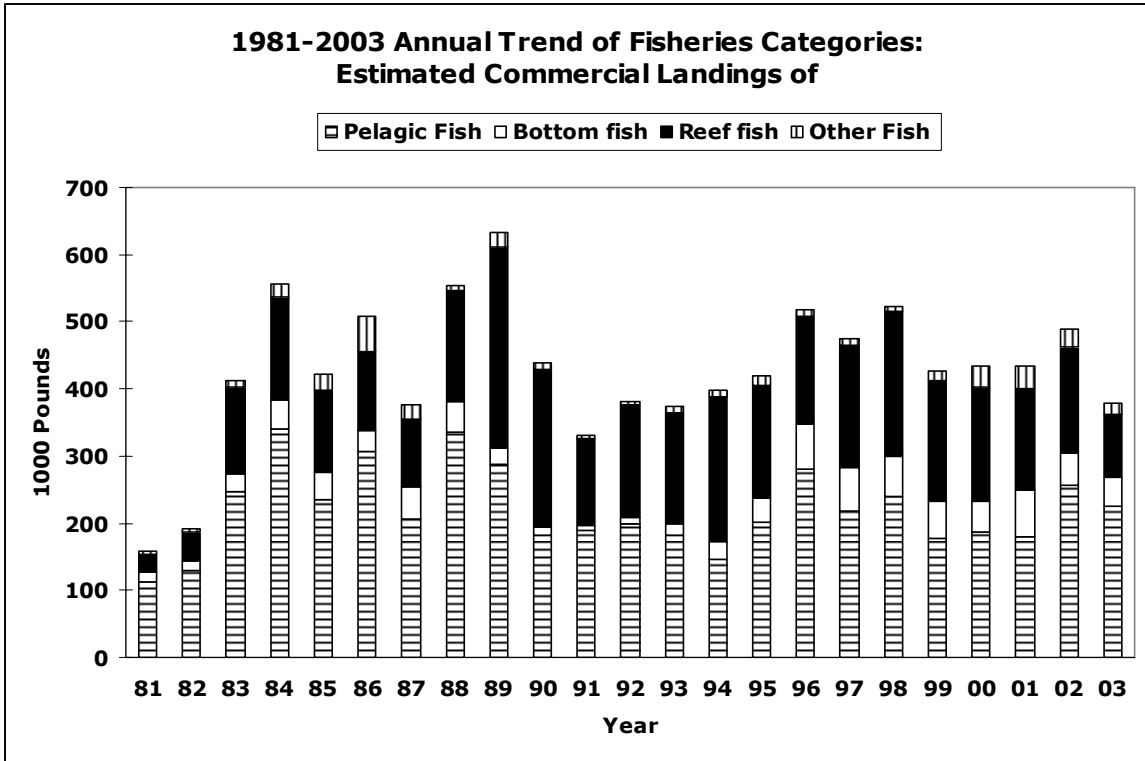


Figure B-3-1

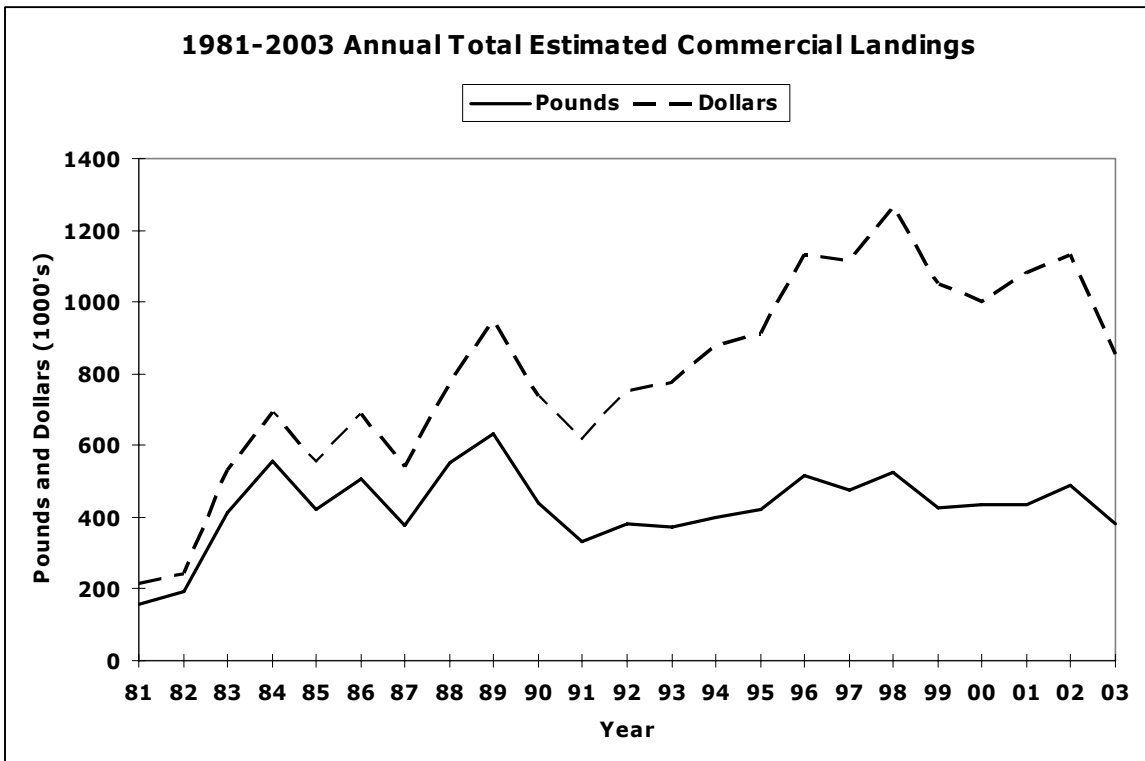


Figure B-3-2

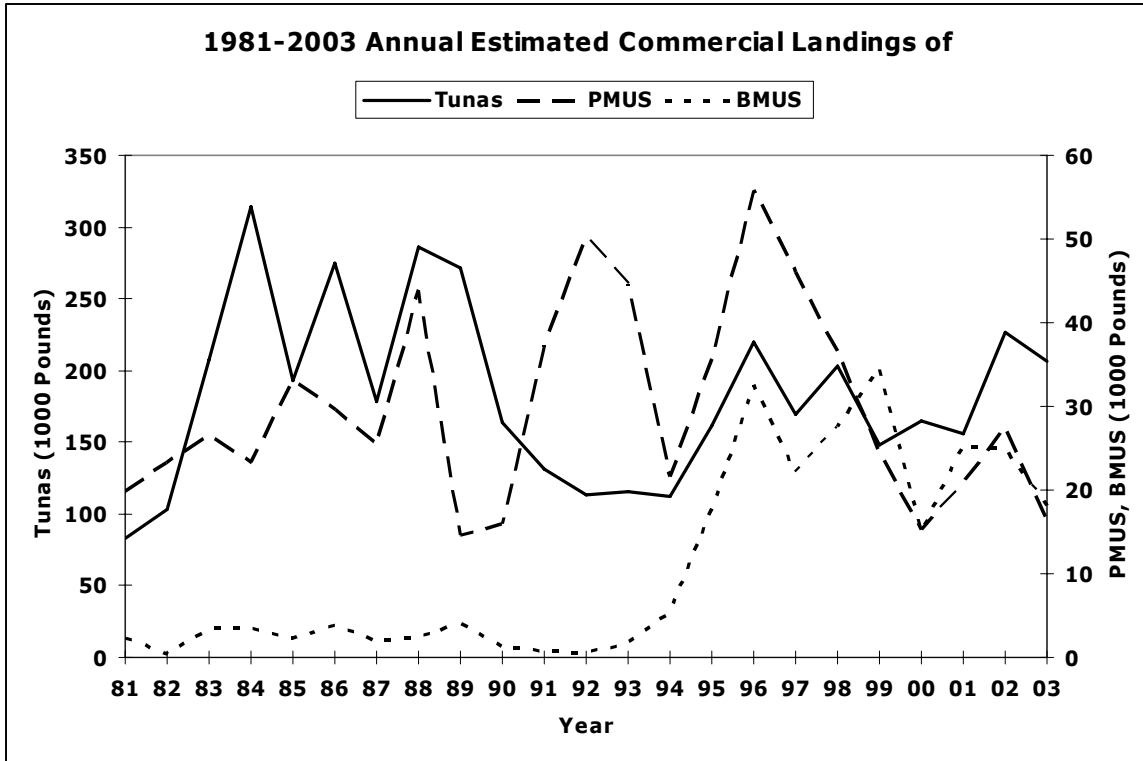


Figure B-3-3

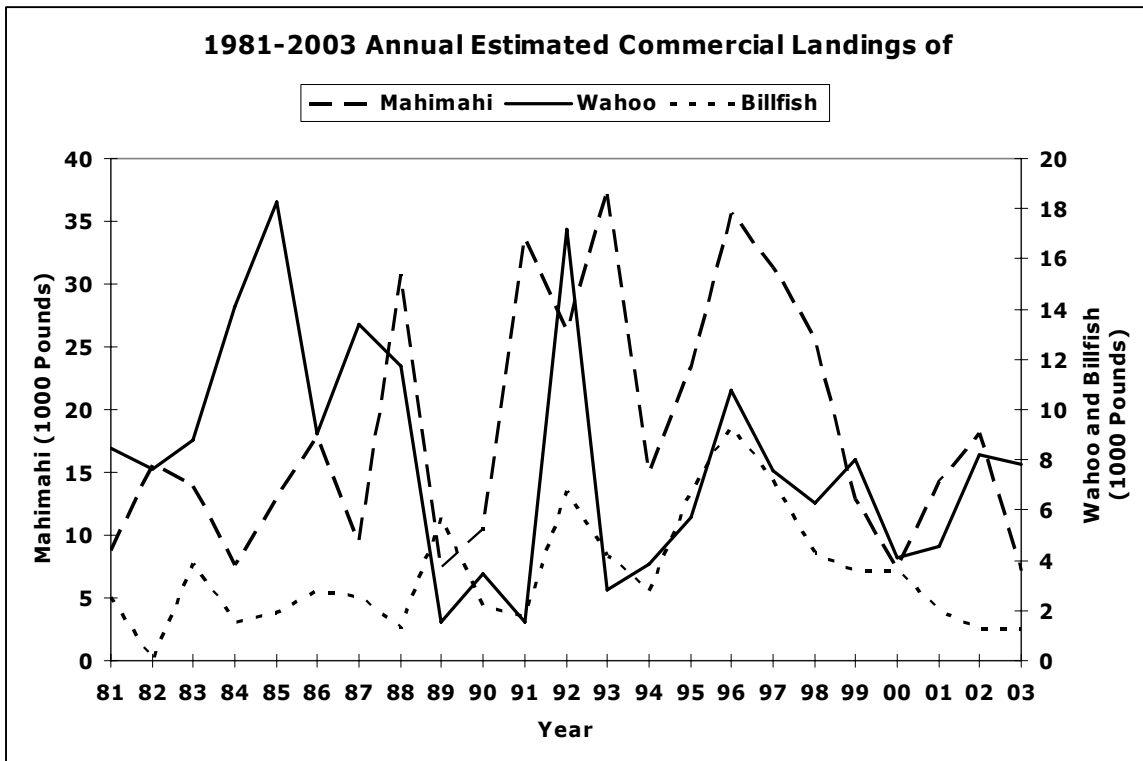


Figure B-3-4

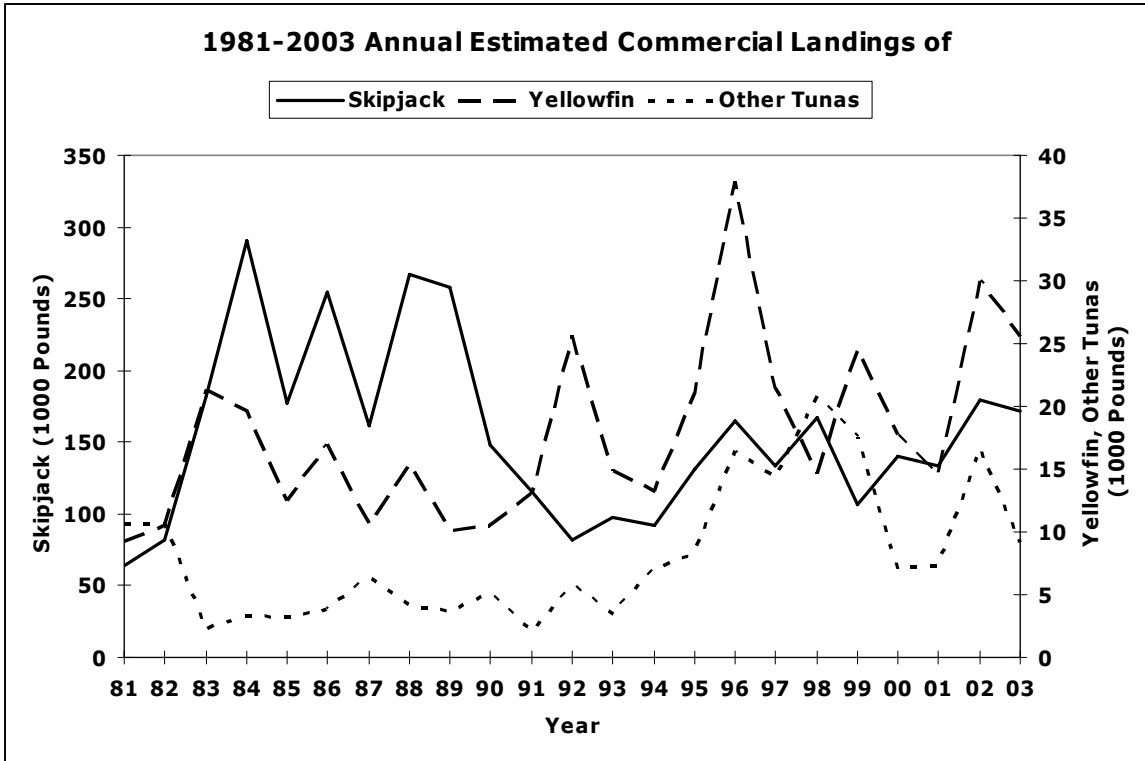


Figure B-3-5

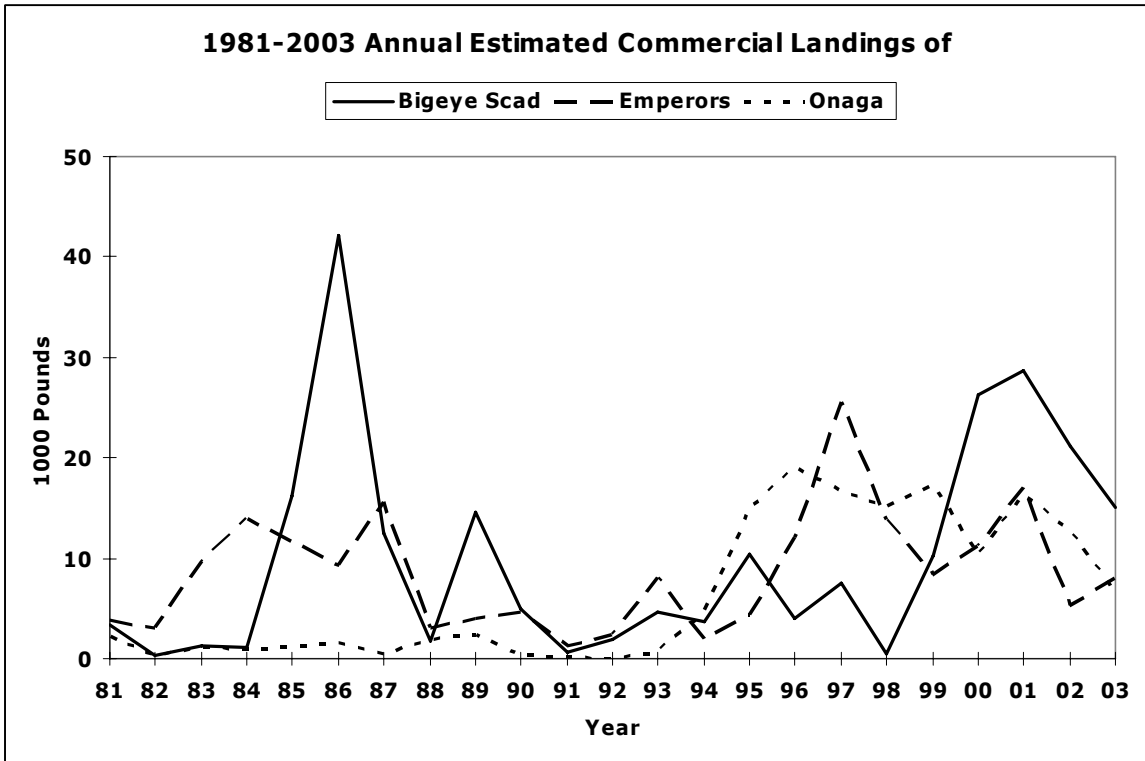


Figure B-3-6

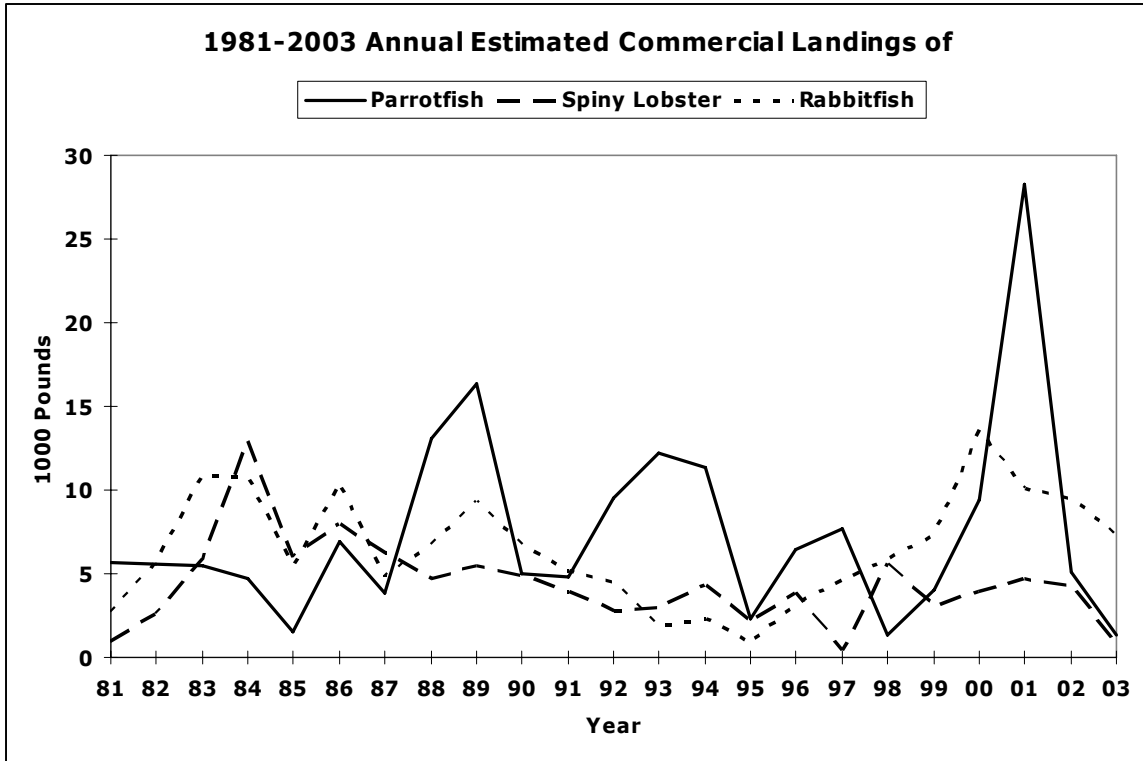


Figure B-3-7

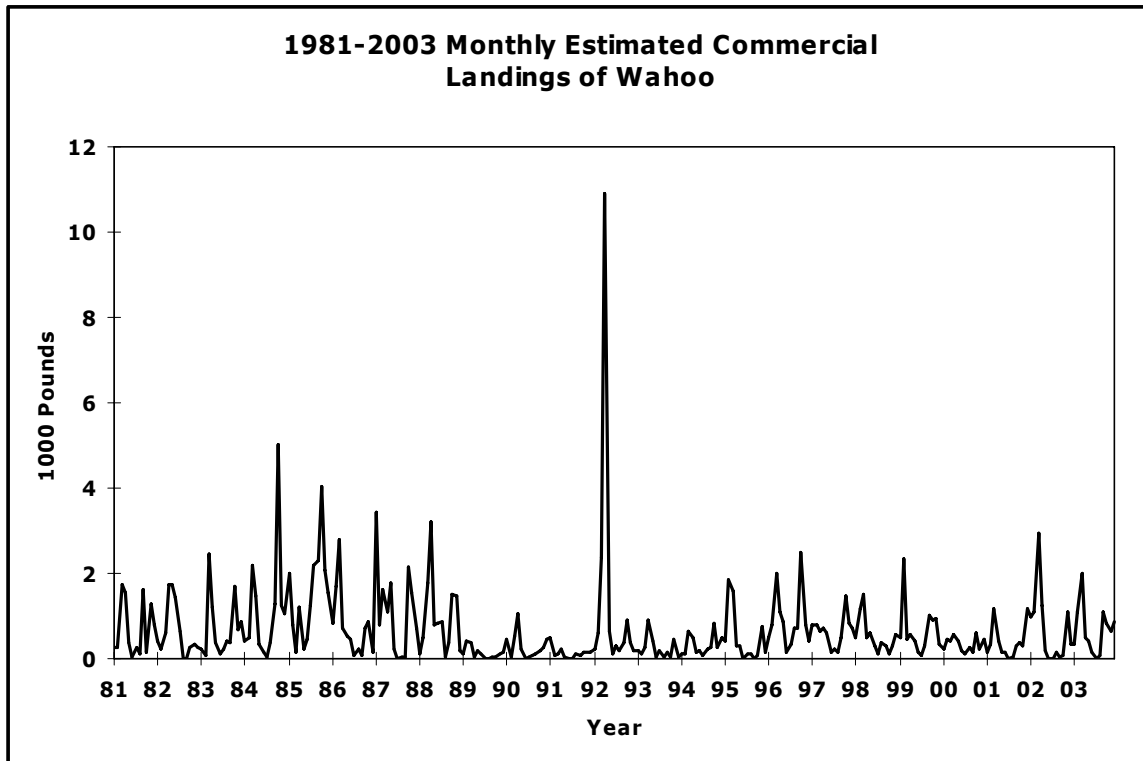


Figure B-4-1

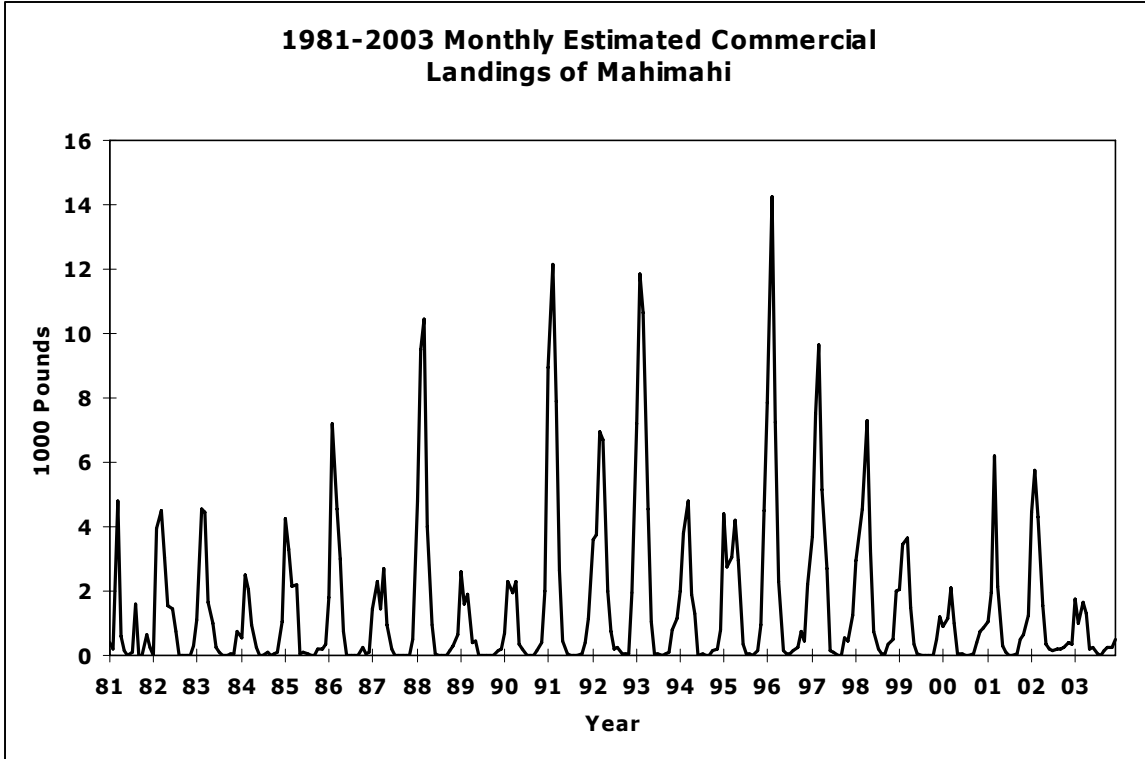


Figure B-4-2

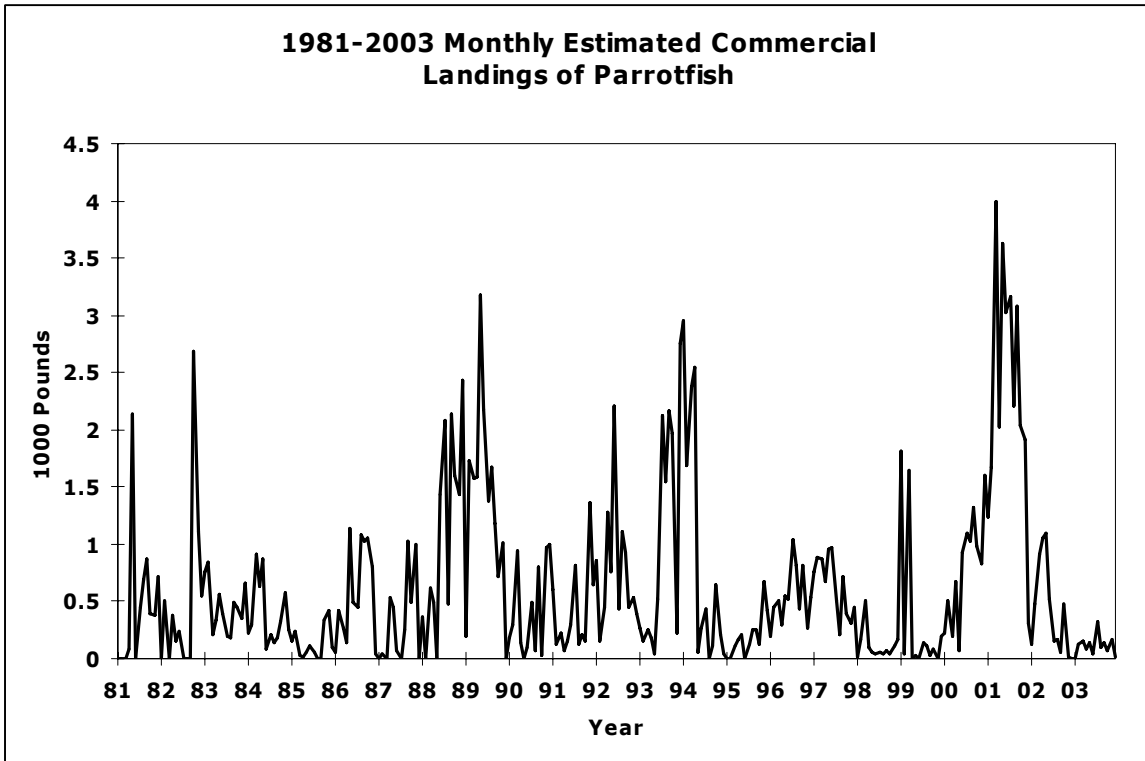


Figure B-4-3

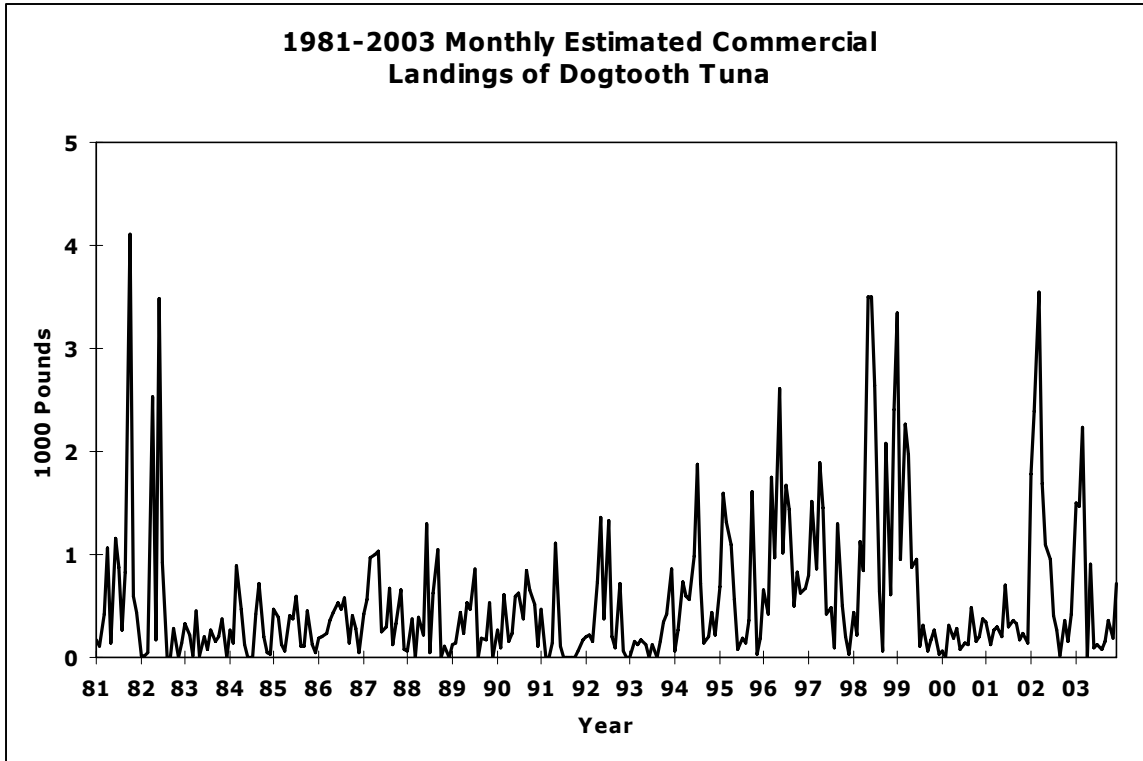


Figure B-4-4

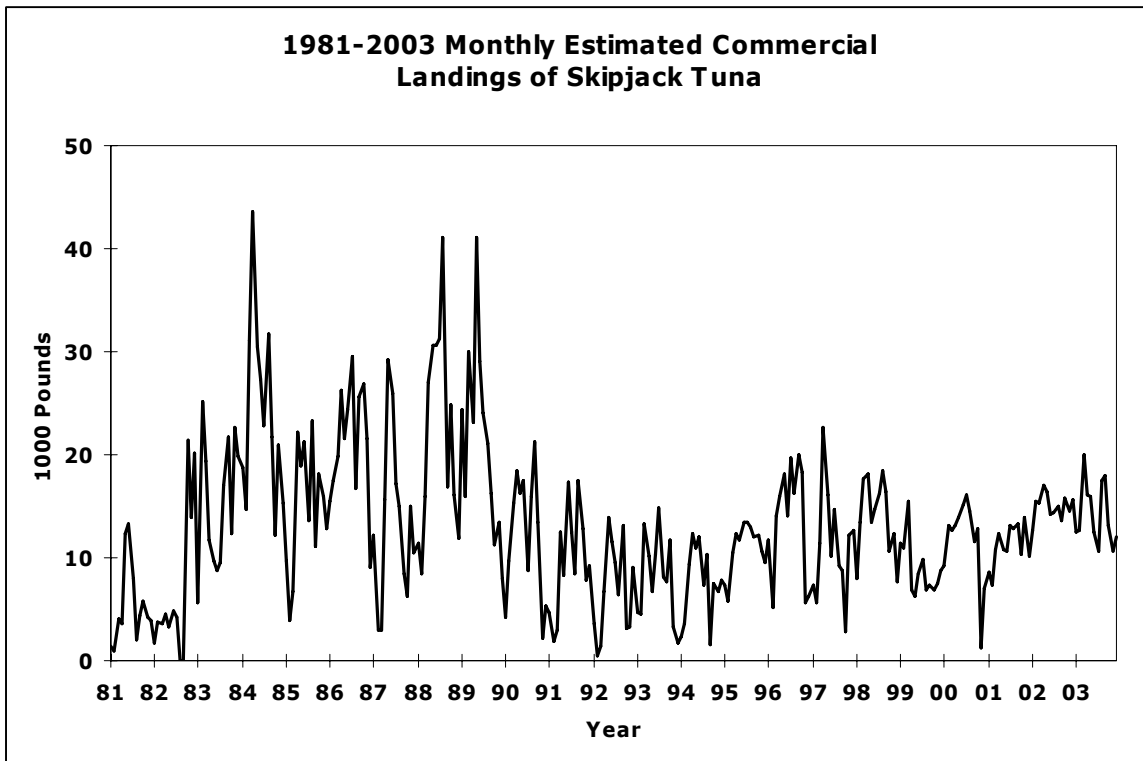


Figure B-4-5

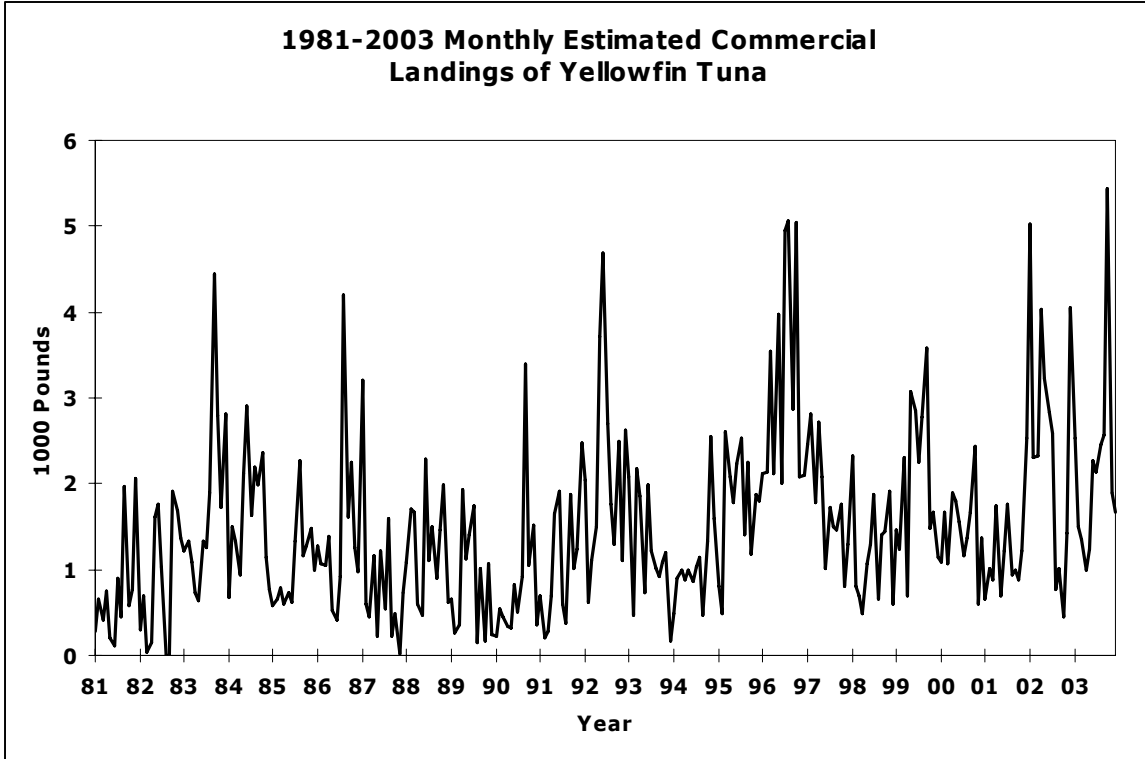


Figure B-4-6

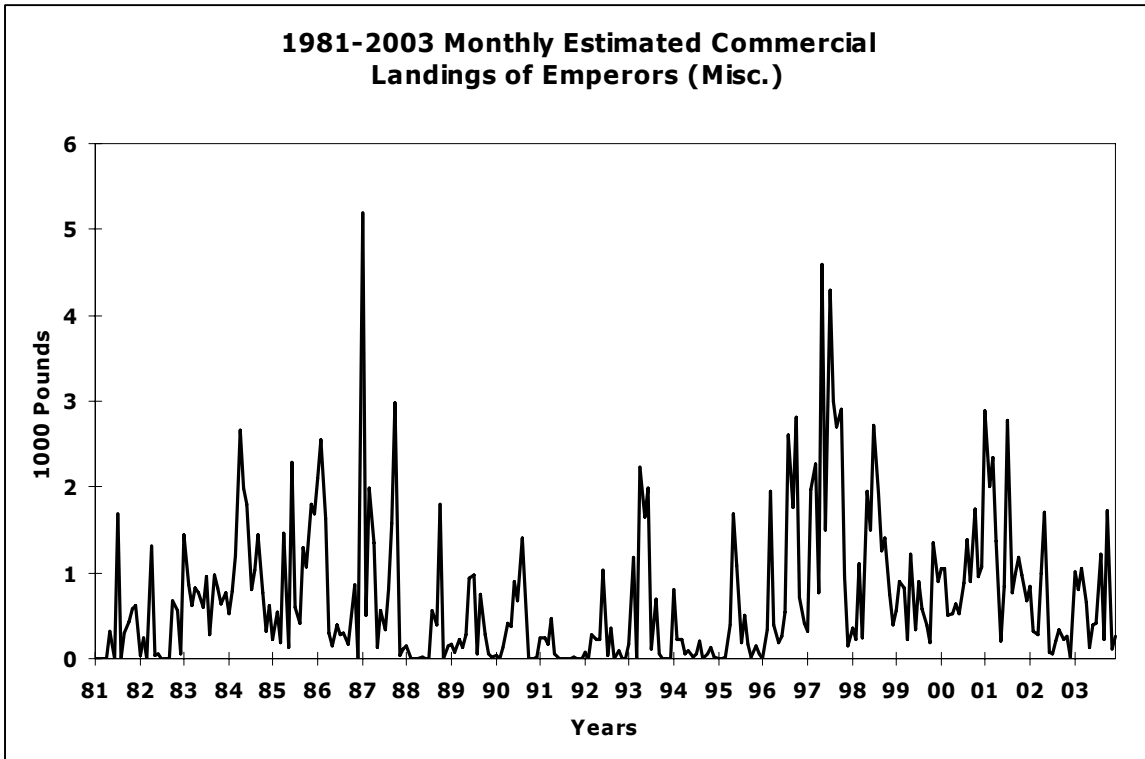


Figure B-4-7

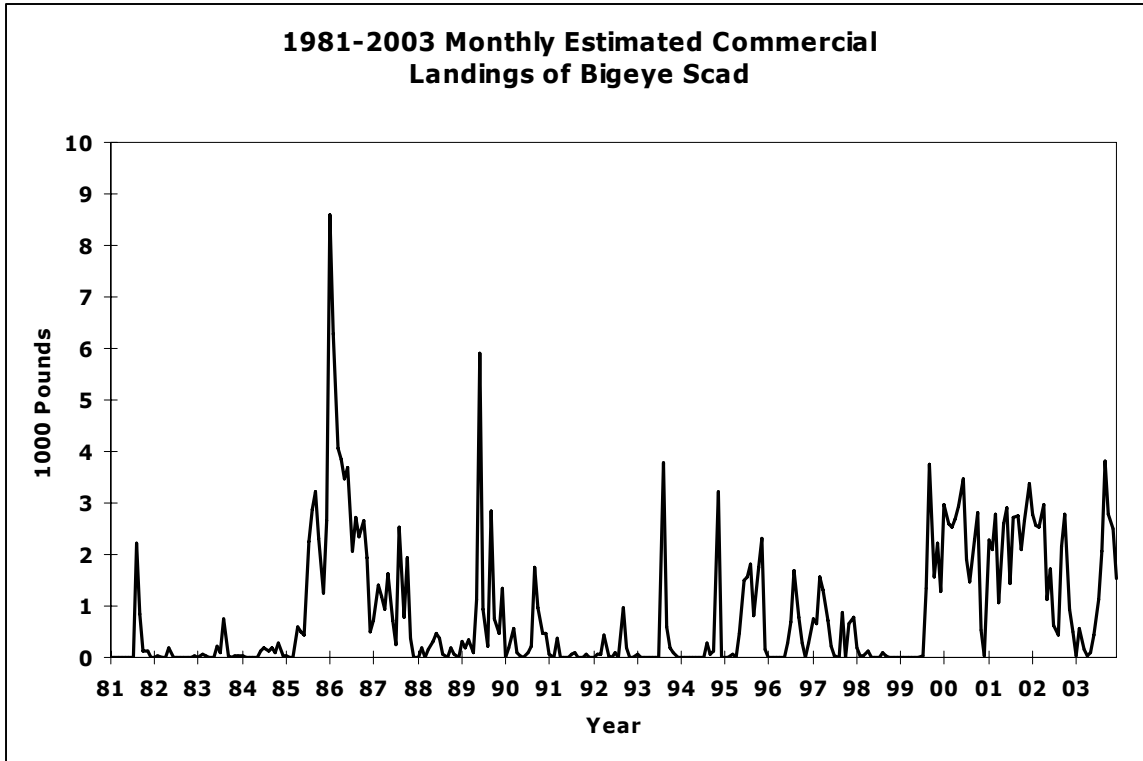


Figure B-4-8

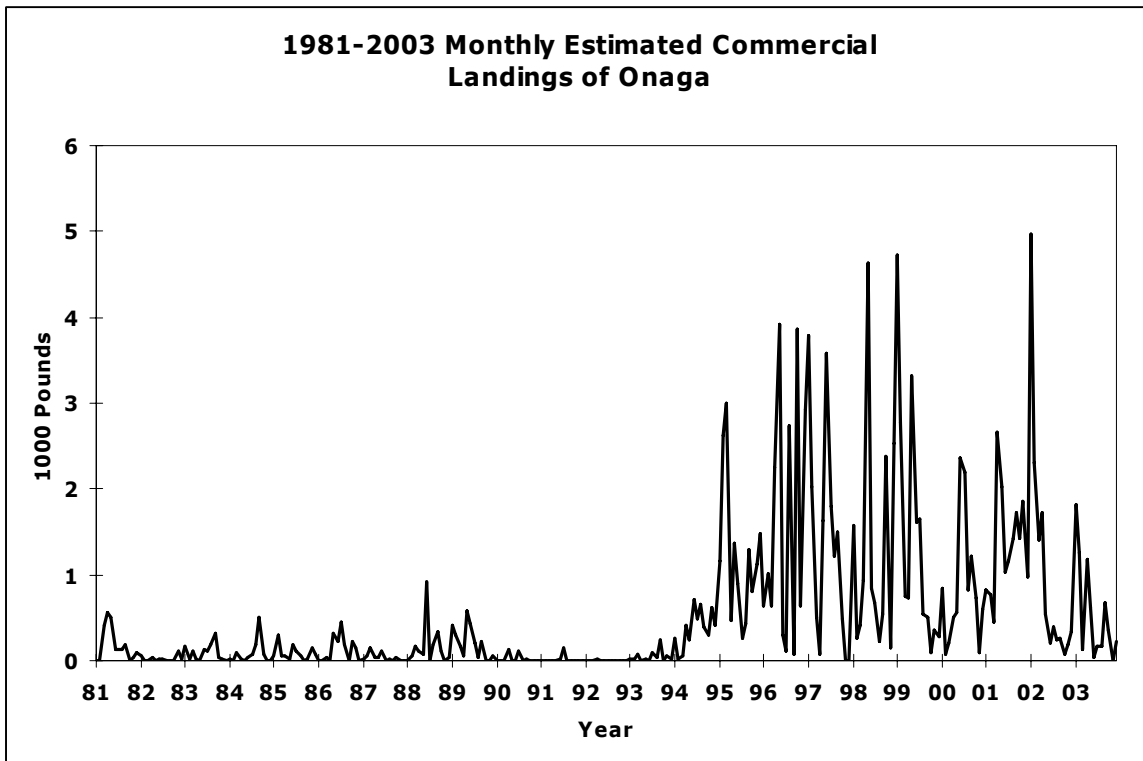


Figure B-4-9

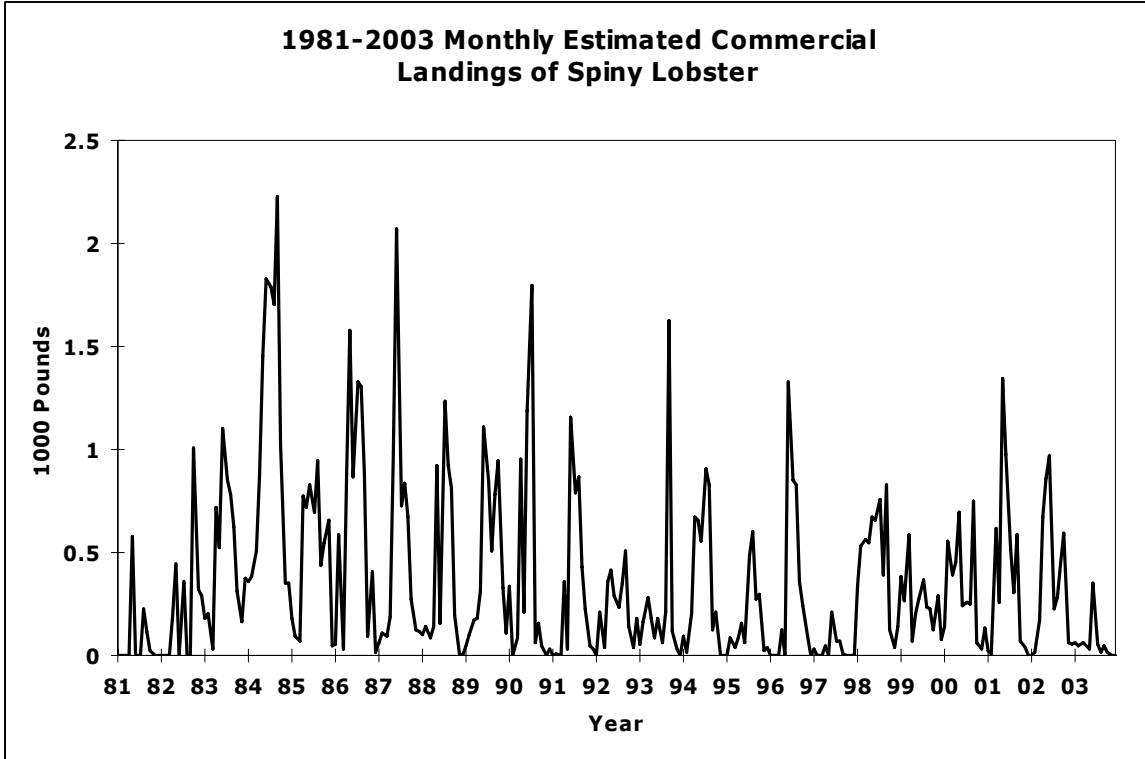


Figure B-4-10

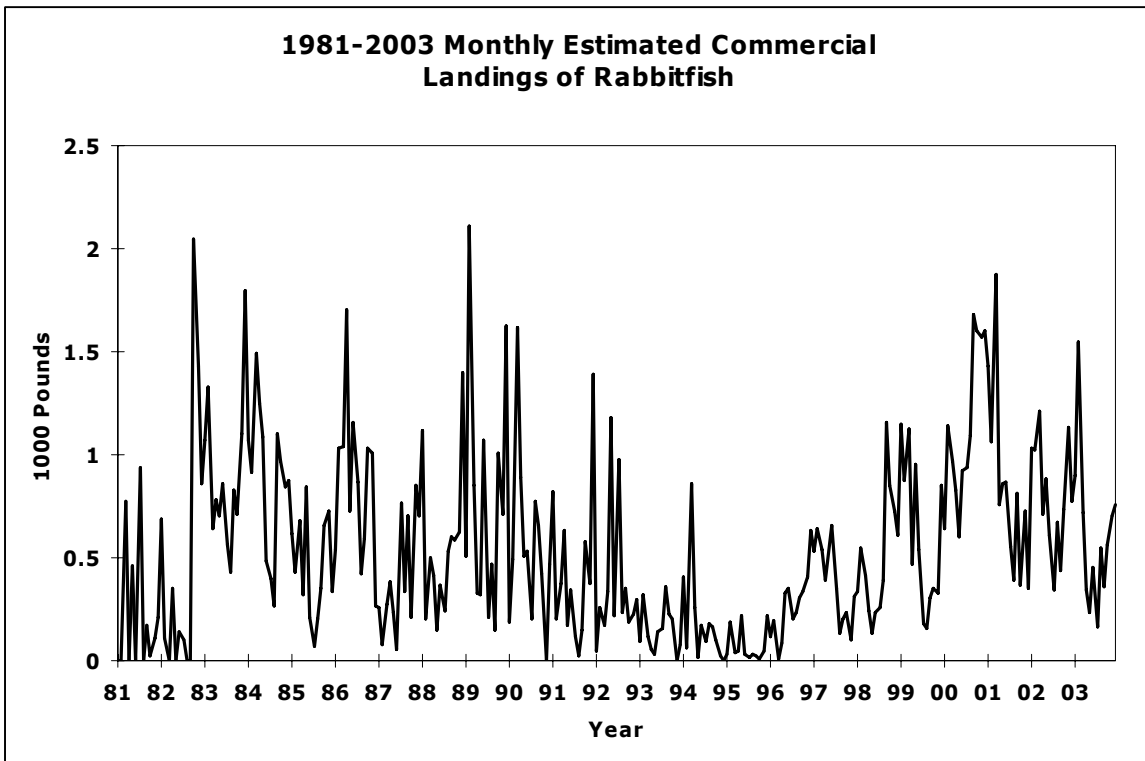


Figure B-4-11