

STATE OF HAWAII 2011 FISHERY STATISTICS

Compiled by
Division of Aquatic Resources
and the
Western Pacific Fishery Information Network

August 2013

CONTENTS

	Page
Introduction	D.1
Northwestern Hawaii Islands Marine National Monument	D.2
Data Collection	D.2
Civil Resources Violation System	D.4
Data Processing	D.5
Data Reporting	D.5
Species Categories	D.5
Tables	D.10
Figures	D.38

LIST OF HAWAII 2011 SUMMARY TABLES

Tables	Page
D-1 Annual Reported Commercial Landings	D.10
D-2 January Reported Commercial Landings	D.14
D-3 February Reported Commercial Landings	D.16
D-4 March Reported Commercial Landings	D.18
D-5 April Reported Commercial Landings	D.20
D-6 May Reported Commercial Landings	D.22
D-7 June Reported Commercial Landings	D.24
D-8 July Reported Commercial Landings	D.26
D-9 August Reported Commercial Landings	D.28
D-10 September Reported Commercial Landings	D.30
D-11 October Reported Commercial Landings	D.32
D-12 November Reported Commercial Landings	D.34
D-13 December Reported Commercial Landings	D.36

LIST OF HAWAII FIGURES

Figures	Page
2011 Monthly Reported Commercial Landings	
D-1-1 Pelagic Fishes, Bottomfishes, Reef Fishes, and Other Fishes	D.38
D-1-2 Tunas, PMUS, and BMUS	D.38
D-1-3 Skipjack Tuna, Bigeye Tuna, and Swordfish	D.39
D-1-4 Albacore, Yellowfin, and Other Tunas	D.39
D-1-5 Wahoo, Mahimahi, and Billfishes	D.40
1948-2011 Average Monthly Reported Commercial Landings	
D-2-1 Tunas, PMUS, and BMUS	D.41
D-2-2 Skipjack Tuna, Bigeye Tuna, and Swordfish	D.41
D-2-3 Albacore, Yellowfin, and Other Tunas	D.42
D-2-4 Wahoo and Mahimahi	D.42
D-2-5 Striped Marlin and Blue Marlin	D.43
D-2-6 Opakapaka, Onaga, and Uku	D.43
D-2-7 Bigeye Scad and Mackerel Scad	D.44
D-2-8 Spiny Lobster and Saltwater Shrimp	D.44
1948-2011 Annual Total Reported Commercial Landings	
D-3-1 All Species (Pounds) and All Species (Dollars)	D.45
D-3-2 Pelagic Fishes, Bottomfishes, Reef Fishes, and Other Fishes	D.45
D-3-3 Tunas, PMUS, and BMUS	D.46
D-3-4 Skipjack Tuna, Bigeye Tuna, and Swordfish	D.46
D-3-5 Albacore, Yellowfin, and Other Tunas	D.47
D-3-6 Wahoo and Mahimah	D.47
D-3-7 Striped Marlin and Blue Marlin	D.48
D-3-8 Opakapaka, Onaga, and Uku	D.48
D-3-9 Bigeye Scad and Mackerel Scad	D.49
D-3-10 Spiny Lobster and Saltwater Shrimp	D.49

LIST OF HAWAII FIGURES (continued)

Figures	Page
1988-2011 Monthly Reported Commercial Landings	
D-4-1 Skipjack Tuna	D.50
D-4-2 Bigeye Tuna	D.50
D-4-3 Swordfish	D.51
D-4-4 Albacore Tuna	D.51
D-4-5 Yellowfin Tuna	D.52
D-4-6 Wahoo	D.52
D-4-7 Mahimahi	D.53
D-4-8 Blue Marlin	D.53
D-4-9 Striped Marlin	D.54
D-4-10 Moonfish (Opah)	D.54
D-4-11 Pomfret	D.55
D-4-12 Oilfish	D.55
D-4-13 Onaga	D.56
D-4-14 Bigeyes/Glasseyes (Priacanthids)	D.56

STATE OF HAWAII 2011 FISHERY STATISTICS

INTRODUCTION

The Hawaiian Archipelago stretches from northwest to southeast, across about 1500 miles in the Northwestern Pacific.

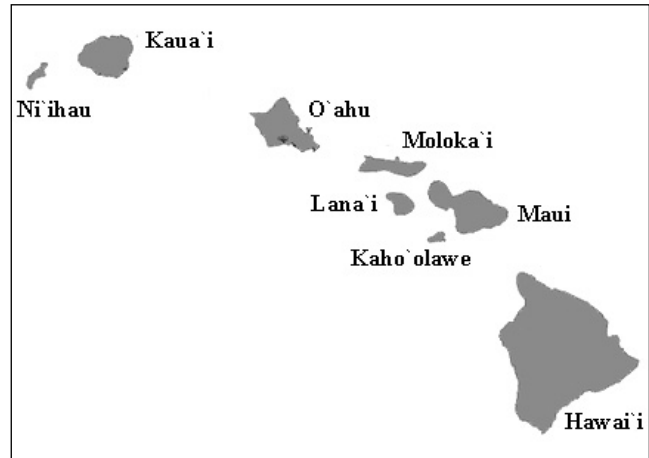
Location: 19° N latitude, 155° W longitude to about 28° N latitude and 178° W longitude

Main Hawaiian Islands: Hawai'i, Maui, Lana'i, Moloka'i, O'ahu, Kaua'i, Kaho'olawe, and Ni'ihau (the eight islands at the southeast end of the Archipelago that include over 99% of the total land area and population)

Population: 1,360,301 (*The State of Hawaii Data Book, 2011*)

Commercial Catch Breakdown (lbs):

About 88% landed on O'ahu, 1% on Hawai'i (Big Island), and 11% on other islands or unknown



Main Hawaiian Islands: copied and modified from:
http://satftp.soest.hawaii.edu/space/hawaii/maps/All_Islands_map.710x509.gif
SOEST Satlab Server

The commercial fisheries of the State of Hawaii are quite diverse. They vary from shore-based algae (*limu*) harvesting by hand, to large offshore vessel-based fisheries, such as the high seas pelagic longline fishery. There are several major fisheries in Hawaii (highest volume and economic value), including tuna fishing, using various methods; deepwater hook-and-line (bottomfishing) for snappers, carangids and an endemic Hawaiian grouper; various forms of net fishing that target nearshore pelagic and reef fishes; and trolling for such pelagic species as tuna, marlin, wahoo (*ono*), and mahimahi.

Hawaii Revised Statutes (HRS §189-2 and §189-3) define commercial fishing to include anyone who sells any portion of their catch (even a single fish), including charter fishing services. Commercial fishers are required to purchase an annually renewable commercial marine license and to report their catch and effort to the Hawaii Department of Land and Natural Resources (HDLNR), Division of Aquatic Resources (DAR). Since 1999, commercial fish dealers have also had reporting requirements to DAR. In 2011, there were 4096 licensed commercial fishers. The summary catch data for 2011 were created from a combination of fisher and dealer reports, processed through the DAR Dealer Reporting System (DRS) and Fisherman Reporting System (FRS), as well as additional fishery reports (including federal longline logbooks).

In 2007, Federal and State fisheries management mandates required implementation of measures to end overfishing of specific deepwater bottomfish species within the main

D.2

Hawaiian Islands (MHI). Known as the “Deep 7”, the six snappers and one endemic grouper targeted for management include: onaga (*Etelis coruscans*), opakapaka (*Pristipomoides filamentosus*), kalekale (*Pristipomoides seiboldii*), ehu (*Etelis carbunculus*), gindai (*Pristipomoides zonatus*), lehi (*Aphareus rutilans*) and hapu'upu'u (*Hyporthodus quernus*). Beginning during 2007, management of the MHI deepwater bottomfish fishery came under a Total Allowable Catch (TAC) for the Deep 7, with a fishing season that usually opened in September and closed whenever the TAC was reached. This additional management required development of a system to closely monitor the fishery, with associated uncertainty in forecasting when the cumulative landings limit would be reached. As a result, the TAC was often exceeded during its early years.

Beginning in September 2011, in accordance with the Magnuson-Stevenson Reauthorization Act of 2006, the MHI Deep 7 bottomfish fishery came under management via an Annual Catch Limit (ACL), with more associated constraints and repercussions if exceeded than existed under the TAC. An Annual Catch Target (ACT) is set at six percent below the ACL and used to manage the MHI Deep 7 bottomfish fishery, in an effort to avoid exceeding the ACL. In 2011, DAR also implemented a bottomfish fishing trip reporting requirement, with a five-day deadline for submitting the report after each trip. Trip reporting requirements and other measures (such as online reporting) developed to increase timeliness of monitoring data, have made it possible to track bottomfish landings on a near-real-time basis, reducing uncertainty and making it more feasible to avoid surpassing the ACL.

In 2011, NOAA Fisheries set the ACL at 346,000 pounds and the ACT at 325,000 pounds. The fishing season opened on September 1, 2011 and closed August 31, 2012. The fishery remained open during the entire bottomfish fishing year, because only 228,388 pounds were landed (70.3%, of the ACT). For more information about this fishery, please visit <http://www.hawaiiibottomfish.info>.

NORTHWESTERN HAWAII ISLANDS MARINE NATIONAL MONUMENT

On June 15, 2006, a Presidential Proclamation established the Northwestern Hawaiian Islands (NWHI) as the Papahānaumokuākea Marine National Monument. The NWHI bottomfish fishery was slated to close in June 2011 via the Executive Orders that created the NWHI Coral Reef Ecosystem Reserve. However, a “buyout” program for fishing permits was completed in January 2010 that effectively closed the fishery when all of the permit holders surrendered their permits in return for federal compensation. For more information about the Monument, please visit <http://www.papahanaumokuakea.gov>.

DATA COLLECTION

Prior to 2002, data processed in the Reported Landings tables and charts presented in this section were collected from various Fishermen’s Reporting System (FRS) forms. Beginning in October 2002, DAR implemented several new FRS forms that no longer required sales information from fishermen. At the same time, fishermen submitting the FRS forms were asked to provide improved catch, effort, and bycatch statistics. Sales and value data collection from fish dealers (instead of fishermen) were phased in over roughly the same time period. The

D.3

FRS data processing and summary system was modified to accommodate the use of these new forms.

In February 2010, DAR launched a web portal Online Fishing Report system that allows licensed commercial fishers to file the Monthly Fishing Report electronically. The Monthly Fishing Report accounts for about 95% of the landing reports received by DAR. Currently, nearly 65% of the monthly fishing reports are filed online. This has produced benefits for both fishers and DAR. Online reporting has reduced paper work and postage for both parties, and has reduced printing expenses for DAR. It has also encouraged fishers to file their monthly reports on time and receive instant confirmation that the report was received and credited. DAR has less FRS reports to enter, and the electronic fish report records have fewer discrepancies because data validation tables are built into the online application. This reduces the need for follow up by staff to correct or verify reporting issues. Commercial fishers are able to file the MHI Deep 7 bottomfish fishing trip reports online. Currently, about 70% of the Deep 7 trip reports are filed electronically.

The fishing reports collect data on fishing catch and effort for each day, method, and area fished, and the data are processed in the FRS. Information collected includes:

- Fisherman's Name and Commercial License Number
- Boat's Name and Registration/USCG Number
- Day, Month and Year Fished
- Charter Trip (y/n)
- Buoy or Area Fished
- Fishing Method
- Hours Fished per Method/Area
- Number of Net Sets
- Number of Fishing Lines or Traps
- Net Length (if applicable)
- Port of Landing
- Species
- Number Landed
- Pounds Landed
- Number Lost
- Number Released

Other FRS data collection forms include the Net, Trap and Dive Activity Report, Tuna Handline Trip Report, Deep Sea Handline Trip Report, Aku Boat Report, NWHI Bottomfish Trip Sales Report, NWHI Bottomfish Trip Daily Log. In September 2011, the use of a MHI Deep 7 Bottomfishing Trip Report form was implemented, to help track and validate landings of Deep 7 species more quickly and manage the ACL.

Commercial collectors of tropical marine fish and invertebrates are required to have an aquarium permit, in addition to their commercial marine license, and to submit monthly catch reports on the Aquarium Fish (C-6) Catch Report. Although some of the species harvested for the aquarium industry are juveniles and adults of species also caught for food, the majority are smaller ornamental species. Trends in this fishery have been considered separately, since its development in the early 1970s, and aquarium fish catches are not included in the statistics contained in this report.

The Dealer Reporting System (DRS) was computerized in 2000 and is now a major source of sales data used to create the tables and charts provided in this publication. Data from the

NOAA Fisheries Longline Logbook Program are integrated with DRS and FRS data to create the summaries presented in this report, using the best available data.

Dealers are required to submit a Commercial Marine Dealer's Report under HDLNR Administrative Rules (authorized under HRS §189-10) for each month that they are in the business of purchasing marine life. Information collected includes:

- Dealer Name
- Dealer License Number
- Date, Month and Year
- First and Last Name from Whom Fish was Bought
- Fisherman's Commercial Marine License Number
- Condition sold (whole, gilled, gutted, fillet, etc.)
- Species
- Pounds Purchased
- Number of Pieces
- Amount Paid

This report assumes that the data submitted by fishers are complete and accurate. The dealer data are used to estimate weight and value of the catch. DAR continually attempts to improve the quality of data and decrease time lags in receiving and processing the data. For more information on Hawaii fisher and fish dealer licensing and reporting requirements, please visit <http://hawaii.gov/dlnr/dar>.

CIVIL RESOURCES VIOLATION SYSTEM

When fishers obtain a commercial marine license, they are required by HRS and HDLNR Administrative Rules to report their fishing activities within 10 days after the end of the month¹. Nearly 67% of licensed fishers fail to comply with the report submission deadline. In June 2009, the HDLNR-DAR implemented a Civil Resources Violation System (CRVS), to issue citations to licensed fishers who either did not comply with the deadline or submitted inaccurate data. The tardy fishers are assessed a small fine for the first offense, which increases progressively for subsequent offenses. Currently, 67% of the fishing reports are submitted on or before the report deadline. The compliance rate increases to about the mid-90th percentile by the following month. The CRVS is also used for noncompliance with MHI Deep 7 bottomfish fishing trip reporting requirements. Nearly 70% of bottomfish trip reports are received on or before the deadline. Based upon this information, a reduction in the fish catch reporting delinquency rate, one of the primary goals of the CRVS, has been achieved.

HDLNR-DAR plans to pursue the secondary goal of the CRVS, which is to enforce accurate fish catch reporting. Policy and procedures designed to match the fish reports with the commercial fish dealer reports, and to contact both fishers and dealers to verify and/or confirm reporting discrepancies are being established. Fishers who do not cooperate or comply with the fish report data accuracy requirement may be subject to CRVS action. HDLNR-DAR is attempting to establish Administrative Rules to issue the commercial marine dealer license. When this is accomplished, HDLNR can use the CRVS to monitor and enforce accurate fish catch reporting requirements.

¹ Only the MHI Deep 7 Bottomfishing Trip Reports are required to be submitted within 5 days after the trip ends.

DATA PROCESSING

When DAR receives fishing report forms, DAR staff reviews and enters the data into the FRS. Data entered online are imported into the FRS electronically. Once the data are entered into the FRS, DAR staff reviews and edits, if necessary. Reports that fail initial quality control screening and editing are returned for correction and resubmittal, or minor problems may be cleared up over the telephone. The CRVS issues citations to fishers who are either delinquent or have reported inaccurate data. When the data are considered to be reasonably complete and error free, they are ready for use in producing various summary reports.

DATA REPORTING

More than 150 marine species and species groups are recorded in DAR's monthly landings reports, many of which represent an insignificant portion of the total catch. To help reduce this document's size and improve the utility of the tables, WPacFIN staff has combined some of the less important species into groups, reorganized the order of presentation, and created a new system to translate these groupings from the database. The new data summary system has 100 species or groups, based on flexible ecological and phylogenetic criteria. Data are reported separately for all these commercially important pelagic and bottomfish species, or unique groups.

The monthly and annual reports included in this document contain the common name, pounds caught, pounds sold, estimated sales value (rounded to the nearest dollar), and average price per pound for each species. Pounds caught data are based on the numbers reported by fishermen in federal longline logbooks and fisherman catch reports. Weights for non-longline data are cross-checked, using FRS and DRS data. The value and price/pound data are calculated from DRS data. Each monthly report contains a subtotal for the sum of all species for that month.

Several types of graphs are also included. Please note that some of the charts in this volume are new or have been modified from earlier volumes. To see the most current data and charts, please visit the WPacFIN website, <http://www.pifsc.noaa.gov/wpacfin>.

SPECIES CATEGORIES

The species and/or groups used in the tables and graphs are described in the following section. Many of the species included in this report have been recategorized over the years. For example, the Magnuson Fishery Conservation and Management Act of 1976 was amended in 1992 to include tunas in the Pelagic Management Unit Species (PMUS) category. However, this report maintains the original species categorizations from previous FSWP reports for comparative purposes. As such, tunas are kept in a separate category. For more detailed species information, please visit the WPacFIN website, <http://www.pifsc.noaa.gov/wpacfin>.

I. Pelagic Management Unit Species (PMUS)

Billfishes (unknown)	Sharks
Black marlin	Shortnose spearfish
Blue marlin	Striped marlin
Mahimahi	Swordfish
Sailfish	Wahoo

II. Bottomfish Management Unit Species (BMUS²)

Armorhead ³	Lehi (silverjaw snapper, rusty jobfish)
Butaguchi (pig-lipped ulua)	Onaga (red snapper)
Ehu (red snapper)	Opakapaka (pink snapper)
Gindai (flower snapper)	Ta'ape (blue-lined snapper)
Gunkan (black) ulua	Uku (gray snapper)
Hapu'upu'u (Hawaiian grouper)	White ulua
Kahala (amberjack)	Yellow-tail kale
Kalekale	

III. Billfishes

Billfishes (unknown)	Shortnose spearfish
Black marlin	Striped marlin
Blue marlin	Swordfish
Sailfish	

IV. Tunas

Albacore tuna	Skipjack tuna
Bigeye tuna	Tunas (unknown)
Kawakawa	Yellowfin tuna

V. Other Tunas

Kawakawa	Tunas (unknown)
----------	-----------------

² *Ulua* is a general term for adult jacks and trevallies

³ Armorhead (*Pseudopentaceros wheeleri*) are seamount groundfish, formerly managed along with BMUS

VI. Fisheries Categories

A. *Pelagic Fishes*

Albacore tuna	Pomfret
Barracudas	Rainbow runner
Bigeye tuna	Rays
Billfishes (unknown)	Sailfish
Black marlin	Sharks
Blue marlin	Shortnose spearfish
Japanese mackerel	Skipjack tuna
Kawakawa	Striped marlin
Mahimahi	Swordfish
Moonfish (opah)	Tunas (unknown)
Oilfish	Wahoo
Pelagic fishes (unknown)	Yellowfin tuna

B. *Bottomfishes (and one Seamount Groundfish)*

Armorhead	Lehi (silverjaw snapper, rusty jobfish)
Blue spot grouper	Onaga (red snapper)
Blue trevally	Opakapaka (pink snapper)
Butaguchi (pig-lipped ulua)	Papa ulua
Dobe ulua	Porgy
Ehu (red snapper)	Sasa ulua
Gindai (flower snapper)	Snake mackerel
Golden kalekale	Snappers
Gunkan (black) ulua	Ta'ape (blue-lined snapper)
Hapu'upu'u (Hawaiian grouper)	Uku (green jobfish)
Jacks	White ulua
Kahala (amberjack)	Yellow-tail kale (goldflag jobfish)
Kalekale (lavender jobfish)	

C. *Reef Fishes*

Bigeyes/Glasseyes (priacanthids)	Reef fishes (unknown)
Damselfishes	Reef jacks
Filefishes	Rudderfish
Flounders	Scorpionfishes
Goatfishes	Squirrelfishes
Gobies	Surgeonfishes/tangs
Hawkfishes	Tilapia
Hawaiian flagtail	Trumpetfish
Parrotfishes	Wrasses
Pufferfishes	

D. *Other Fishes Other Fishes, Algae & Invertebrates*

Algae	Milkfish
Bigeye scad (akule)	Miscellaneous
Bonefish	Mulletts
Clams	Needlefishes
Crabs	Octopus
Eels	Shrimp (saltwater)
Flying fishes	Silversides
Herrings/sardines	Slipper lobsters
Invertebrates	Spiny lobsters
Leatherjacket	Squid
Limpets (saltwater)	Ten pounder
Mackerel scad	Threadfin

(This page is intentionally left blank.)

Table D-1
Hawaii Annual 2011 Reported Commercial Landings

Species	Caught	Sold	Value (\$)	Price/Lb (\$)
Miscellaneous	7,988	7,732	10,988	1.42
Sharks	272,548	175,911	115,302	0.66
Rays	69	0	0	0.00
Eels	1,587	490	570	1.16
Bigeye scad (akule)	315,380	182,614	592,700	3.25
Mackerel scad	284,270	168,911	458,923	2.72
Leatherjacket	329	308	736	2.39
Ten pounder	1,387	1,347	2,628	1.95
Bonefish	17,410	16,882	20,227	1.20
Herrings/sardines	3,087	2,557	4,942	1.93
Milkfish	1,067	684	816	1.19
Flying fishes	1	1	2	2.00
Needlefishes	392	281	491	1.75
Threadfin	1,089	512	3,776	7.38
Mulletts	15,146	9,910	42,863	4.33
Pomfret	430,647	427,365	1,448,671	3.39
Oilfish	632,561	632,385	868,147	1.37
Jacks	1,710	1,652	4,720	2.86
Kahala (amberjack)	15,822	2,931	5,224	1.78
Sasa ulua	1,095	452	1,329	2.94
Butaguchi (pig-lipped ulua)	1,365	487	1,733	3.56
Dobe ulua	1,319	450	1,100	2.44
Papa ulua	8,613	7,679	30,292	3.94
White ulua	19,443	8,395	19,999	2.38
Gunkan (black) ulua	1,590	68	307	4.55
Blue trevally	6,803	2,876	7,033	2.45
Hapu'upu'u (Hawaiian grouper)	7,460	6,691	32,861	4.91
Blue spot grouper	5,391	4,046	13,788	3.41
Kalekale	8,641	6,666	25,329	3.80
Snappers	6,310	4,509	18,228	4.04
Yellow-tail kale	53	14	37	2.60
Ta'ape (blue-lined snapper)	41,132	20,264	34,148	1.69
Ehu (red snapper)	20,819	15,150	81,630	5.39
Gindai (flower snapper)	2,592	1,603	7,221	4.50
Golden kalekale	129	18	58	3.18
Lehi (silverjaw snapper, rusty jobfish)	4,697	4,065	17,487	4.30
Onaga (red snapper)	46,362	39,812	313,755	7.88
Opakapaka (pink snapper)	101,882	85,070	506,495	5.95
Uku (gray snapper)	109,606	94,285	417,900	4.43
Snake mackerel	33	0	0	0.00
Porgy	6,880	5,006	16,391	3.27
Reef fishes (unknown)	930	0	0	1.00
Reef jacks	42	16	71	4.45

Table D-1 (continued)
Hawaii Annual 2011 Reported Commercial Landings

Species	Caught	Sold	Value (\$)	Price/Lb (\$)
Squirrelfishes	64,057	59,217	254,277	4.29
Trumpetfish	235	220	316	1.43
Scorpionfishes	2,845	1,855	8,932	4.81
Hawaiian flagtail	2,090	1,282	5,160	4.02
Bigeyes/Glasseyes (priacanthids)	3,205	3,041	11,121	3.66
Goatfishes	58,692	46,920	234,879	5.01
Rudderfish	27,714	20,509	29,571	1.44
Damselfishes	2,590	2,517	7,684	3.05
Hawkfishes	953	953	2,927	3.07
Tilapia	3,316	244	285	1.17
Wrasses	7,249	4,851	20,751	4.28
Parrotfishes	73,168	64,844	223,873	3.45
Surgeonfishes/tangs	121,985	103,274	186,077	1.80
Flounders	83	35	64	1.84
Filefishes	715	564	766	1.36
Pufferfishes	85	0	0	0.00
Pelagic fishes (unknown)	923	213	56	0.26
Moonfish (opah)	1,598,687	1,564,413	2,851,770	1.82
Rainbow runner	4,187	2,537	4,085	1.61
Mahimahi	1,630,559	1,427,608	4,329,540	3.03
Barracudas	57,873	52,667	49,957	0.95
Wahoo	670,213	567,595	1,820,050	3.21
Tunas (unknown)	16,550	16,550	50,488	3.05
Skipjack tuna	1,087,466	636,553	1,020,399	1.60
Yellowfin tuna	3,785,781	3,435,331	9,966,934	2.90
Albacore tuna	1,769,968	1,594,485	2,561,062	1.61
Bigeye tuna	13,130,325	12,880,939	53,082,591	4.12
Kawakawa	6,132	2,210	5,630	2.55
Billfishes (unknown)	1,865	665	1,419	2.13
Swordfish	3,589,984	2,592,041	6,669,056	2.57
Blue marlin	1,229,031	917,185	1,240,448	1.35
Black marlin	10,075	337	421	1.25
Striped marlin	919,517	910,442	1,135,735	1.25
Shortnose spearfish	535,765	469,238	528,443	1.13
Sailfish	34,295	17,897	26,023	1.45
Spiny lobsters	10,604	9,159	115,307	12.6
Slipper lobsters	181	3	26	8.50
Crabs	35,640	11,092	54,053	4.87
Shrimp (saltwater)	8,388	1,169	7,347	6.28
Octopus	30,108	19,792	86,133	4.35
Squid	3,185	2,735	7,028	2.57
Limpets (saltwater)	16,072	8,260	51,054	6.18

Table D-1 (continued)
Hawaii Annual 2011 Reported Commercial Landings

Species	Caught	Sold	Value (\$)	Price/Lb (\$)
Invertebrates	226	183	1,165	6.37
Algae	13,398	5,597	47,072	8.41
TOTAL	32,971,652	29,397,319	91,828,893	3.12

(This page is intentionally left blank.)

Table D-2
Hawaii January 2011 Reported Commercial Landings

Species	Caught	Sold	Value (\$)	Price/Lb (\$)
Miscellaneous	243	243	813	3.35
Sharks	23,992	18,343	9,450	0.52
Eels	118	27	32	1.21
Bigeye scad (akule)	11,848	9,131	32,651	3.58
Mackerel scad	25,900	18,999	50,963	2.68
Leatherjacket	14	14	27	1.89
Ten pounder	292	292	363	1.24
Bonefish	2,123	2,123	2,627	1.24
Milkfish	92	92	97	1.05
Needlefishes	16	15	23	1.55
Threadfin	56	4	31	7.50
Mulletts	58	0	0	0.00
Pomfret	27,320	26,891	98,988	3.68
Oilfish	58,522	58,522	54,554	0.93
Jacks	57	57	138	2.44
Kahala (amberjack)	2,387	472	757	1.60
Sasa ulua	32	3	12	4.00
Butaguchi (pig-lipped ulua)	338	154	542	3.52
Dobe ulua	26	0	0	0.00
Papa ulua	410	400	1,225	3.07
White ulua	1,100	541	1,385	2.56
Gunkan (black) ulua	8	8	12	1.50
Blue trevally	494	227	491	2.16
Hapu'upu'u (Hawaiian grouper)	1,046	813	4,463	5.49
Blue spot grouper	348	217	784	3.62
Kalekale	1,282	1,076	4,059	3.77
Snappers	400	164	597	3.64
Yellow-tail kale	6	5	14	2.75
Ta'ape (blue-lined snapper)	3,130	1,650	2,682	1.63
Ehu (red snapper)	2,552	2,063	11,230	5.44
Gindai (flower snapper)	266	151	703	4.66
Golden kalekale	23	2	5	3.00
Lehi (silverjaw snapper, rusty jobfish)	954	782	3,380	4.32
Onaga (red snapper)	7,019	5,715	42,564	7.45
Opakapaka (pink snapper)	24,889	21,858	133,400	6.10
Uku (gray snapper)	5,237	4,329	20,137	4.65
Porgy	295	109	323	2.96
Reef fishes (unknown)	3	0	0	0.00
Squirrelfishes	2,985	2,361	9,570	4.05
Trumpetfish	2	2	2	1.50
Scorpionfishes	252	134	765	5.72
Hawaiian flagtail	239	208	986	4.73
Bigeyes/Glasseyes (priacanthids)	338	338	1,290	3.82

Table D-2 (continued)
Hawaii January 2011 Reported Commercial Landings

Species	Caught	Sold	Value (\$)	Price/Lb (\$)
Goatfishes	7,055	5,650	22,286	3.94
Rudderfish	1,533	1,348	1,776	1.32
Damselfishes	179	172	632	3.67
Hawkfishes	6	6	19	3.35
Wrasses	592	320	1,627	5.09
Parrotfishes	5,142	3,277	10,879	3.32
Surgeonfishes/tangs	8,573	6,605	12,877	1.95
Pelagic fishes (unknown)	344	176	52	0.29
Moonfish (opah)	73,519	67,718	163,375	2.41
Rainbow runner	174	110	209	1.90
Mahimahi	72,004	59,782	144,374	2.42
Barracudas	1,419	712	1,044	1.47
Wahoo	22,250	16,551	64,081	3.87
Tunas (unknown)	104	104	332	3.19
Skipjack tuna	58,283	17,839	20,910	1.17
Yellowfin tuna	211,951	179,408	512,944	2.86
Albacore tuna	187,875	180,405	223,680	1.24
Bigeye tuna	1,136,348	1,135,160	4,823,535	4.25
Kawakawa	440	236	637	2.70
Billfishes (unknown)	270	0	0	0.00
Swordfish	381,257	204,542	740,814	3.62
Blue marlin	46,042	22,983	32,626	1.42
Black marlin	550	0	0	0.00
Striped marlin	75,124	75,124	86,261	1.15
Shortnose spearfish	77,262	64,618	49,833	0.77
Sailfish	7,170	596	807	1.35
Spiny lobsters	856	688	8,435	12.3
Slipper lobsters	29	0	0	0.00
Crabs	3,667	1,020	5,072	4.97
Shrimp (saltwater)	400	0	0	0.00
Octopus	1,412	906	3,749	4.14
Limpets (saltwater)	1,188	632	4,367	6.91
Algae	447	265	2,867	10.8
TOTAL	2,590,174	2,225,487	7,432,237	3.34

Table D-3
Hawaii February 2011 Reported Commercial Landings

Species	Caught	Sold	Value (\$)	Price/Lb (\$)
Miscellaneous	341	144	180	1.25
Sharks	23,123	13,504	8,912	0.66
Eels	183	71	89	1.25
Bigeye scad (akule)	26,828	13,503	46,975	3.48
Mackerel scad	25,025	13,862	40,502	2.92
Leatherjacket	25	20	41	2.05
Ten pounder	64	51	51	1.00
Bonfish	1,128	1,128	1,377	1.22
Herrings/sardines	1,183	954	1,908	2.00
Milkfish	185	182	183	1.01
Needlefishes	16	3	6	2.00
Threadfin	127	71	547	7.75
Mullet	5	5	15	3.00
Pomfret	27,553	27,053	110,816	4.10
Oilfish	64,846	64,846	72,327	1.12
Jacks	130	130	304	2.34
Kahala (amberjack)	3,120	453	854	1.88
Sasa ulua	28	14	45	3.31
Butaguchi (pig-lipped ulua)	482	126	374	2.96
Dobe ulua	81	26	66	2.50
Papa ulua	791	506	1,922	3.80
White ulua	2,173	866	2,025	2.34
Gunkan (black) ulua	12	0	0	0.00
Blue trevally	472	169	398	2.36
Hapu'upu'u (Hawaiian grouper)	1,007	723	3,848	5.32
Blue spot grouper	574	275	1,242	4.51
Kalekale	1,597	1,074	4,137	3.85
Snappers	967	781	3,648	4.67
Yellow-tail kale	9	8	19	2.42
Ta'ape (blue-lined snapper)	1,834	1,232	1,976	1.60
Ehu (red snapper)	4,052	2,676	14,616	5.46
Gindai (flower snapper)	378	175	881	5.02
Golden kalekale	35	7	16	2.40
Lehi (silverjaw snapper, rusty jobfish)	1,335	1,187	5,477	4.61
Onaga (red snapper)	9,536	8,231	60,052	7.30
Opakapaka (pink snapper)	24,960	19,107	117,661	6.16
Uku (gray snapper)	9,627	6,755	29,818	4.41
Snake mackerel	10	0	0	0.00
Porgy	306	271	803	2.97
Reef fishes (unknown)	8	0	0	0.00
Squirrelfishes	4,618	3,792	16,917	4.46
Trumpetfish	31	31	29	0.95
Scorpionfishes	343	137	770	5.61

Table D-3 (continued)
Hawaii February 2011 Reported Commercial Landings

Species	Caught	Sold	Value (\$)	Price/Lb (\$)
Hawaiian flagtail	291	199	824	4.13
Bigeyes/Glasseyes (priacanthids)	325	255	917	3.59
Goatfishes	4,868	4,432	18,871	4.26
Rudderfish	4,137	2,781	3,917	1.41
Damselfishes	380	366	1,221	3.34
Hawkfishes	40	40	157	3.96
Tilapia	980	0	0	0.00
Wrasses	512	284	1,620	5.71
Parrotfishes	5,646	4,515	15,898	3.52
Surgeonfishes/tangs	11,875	7,928	15,545	1.96
Flounders	5	5	10	1.85
Filefishes	40	25	32	1.25
Pelagic fishes (unknown)	237	8	1	0.10
Moonfish (opah)	41,364	41,364	129,205	3.12
Rainbow runner	195	148	318	2.16
Mahimahi	99,495	82,910	205,732	2.48
Barracudas	2,093	1,744	2,619	1.50
Wahoo	35,609	29,640	111,110	3.75
Tunas (unknown)	698	698	1,595	2.29
Skipjack tuna	103,914	34,601	29,978	0.87
Yellowfin tuna	340,943	315,029	680,435	2.16
Albacore tuna	282,699	272,786	354,021	1.30
Bigeye tuna	1,057,166	1,046,867	4,183,984	4.00
Kawakawa	481	115	293	2.56
Swordfish	508,654	251,171	666,405	2.65
Blue marlin	65,294	39,351	44,878	1.14
Black marlin	98	0	0	0.00
Striped marlin	105,129	105,129	76,342	0.73
Shortnose spearfish	92,409	80,971	30,521	0.38
Sailfish	3,173	190	371	1.95
Spiny lobsters	635	635	7,518	11.8
Slipper lobsters	29	0	0	0.00
Crabs	2,922	647	4,114	6.36
Shrimp (saltwater)	300	0	0	0.00
Octopus	2,097	1,652	6,704	4.06
Squid	13	0	0	0.00
Limpets (saltwater)	1,024	652	3,578	5.49
Algae	1,079	448	4,665	10.4
TOTAL	3,015,988	2,511,735	7,155,223	2.85

Table D-4
Hawaii March 2011 Reported Commercial Landings

Species	Caught	Sold	Value (\$)	Price/Lb (\$)
Miscellaneous	206	206	798	3.87
Sharks	22,842	18,965	12,909	0.68
Eels	124	63	71	1.12
Bigeye scad (akule)	21,022	9,273	33,282	3.59
Mackerel scad	19,158	10,616	28,991	2.73
Leatherjacket	9	9	18	2.02
Ten pounder	92	92	109	1.18
Bonefish	1,019	1,019	1,202	1.18
Herrings/sardines	737	737	1,302	1.77
Milkfish	130	130	156	1.20
Needlefishes	23	23	47	2.04
Threadfin	73	48	295	6.21
Mulletts	8	8	25	3.00
Pomfret	49,034	49,034	130,239	2.66
Oilfish	73,682	73,682	100,251	1.36
Jacks	58	58	118	2.05
Kahala (amberjack)	987	98	197	2.00
Sasa ulua	5	5	12	2.60
Butaguchi (pig-lipped ulua)	121	121	446	3.70
Dobe ulua	4	4	11	3.00
Papa ulua	518	444	2,082	4.69
White ulua	802	153	277	1.81
Gunkan (black) ulua	14	14	32	2.31
Blue trevally	232	198	367	1.86
Hapu'upu'u (Hawaiian grouper)	345	345	2,090	6.06
Blue spot grouper	217	178	615	3.46
Kalekale	143	137	537	3.93
Snappers	438	176	618	3.50
Ta'ape (blue-lined snapper)	2,190	522	780	1.49
Ehu (red snapper)	573	421	2,138	5.08
Gindai (flower snapper)	41	41	178	4.33
Lehi (silverjaw snapper, rusty jobfish)	161	131	609	4.64
Onaga (red snapper)	852	852	6,405	7.52
Opakapaka (pink snapper)	3,252	3,252	19,668	6.05
Uku (gray snapper)	4,782	4,782	20,172	4.22
Porgy	241	187	535	2.87
Reef fishes (unknown)	41	0	0	0.00
Reef jacks	2	2	7	4.50
Squirrelfishes	2,300	1,931	8,610	4.46
Scorpionfishes	153	100	367	3.68
Hawaiian flagtail	138	65	269	4.12
Bigeyes/Glasseyes (priacanthids)	66	66	220	3.35
Goatfishes	3,230	2,374	10,712	4.51

Table D-4 (continued)
Hawaii March 2011 Reported Commercial Landings

Species	Caught	Sold	Value (\$)	Price/Lb (\$)
Rudderfish	854	214	295	1.38
Damselfishes	89	89	261	2.93
Hawkfishes	51	51	185	3.63
Tilapia	883	0	0	0.00
Wrasses	411	214	747	3.49
Parrotfishes	5,131	3,524	10,996	3.12
Surgeonfishes/tangs	8,509	6,350	11,030	1.74
Filefishes	82	82	122	1.50
Pelagic fishes (unknown)	11	11	1	0.10
Moonfish (opah)	77,631	77,631	178,862	2.30
Rainbow runner	192	123	233	1.89
Mahimahi	228,758	195,474	465,906	2.38
Barracudas	4,029	4,029	3,452	0.86
Wahoo	68,673	62,214	172,906	2.78
Tunas (unknown)	548	548	887	1.62
Skipjack tuna	78,267	21,869	24,938	1.14
Yellowfin tuna	351,597	335,911	720,270	2.14
Albacore tuna	254,505	234,926	377,831	1.61
Bigeye tuna	1,565,087	1,536,925	4,743,564	3.09
Kawakawa	234	85	193	2.28
Billfishes (unknown)	360	0	0	0.00
Swordfish	652,356	540,065	1,358,137	2.51
Blue marlin	96,229	60,705	65,156	1.07
Black marlin	835	337	421	1.25
Striped marlin	117,697	117,697	97,049	0.82
Shortnose spearfish	96,852	83,839	42,462	0.51
Sailfish	3,477	1,271	1,687	1.33
Spiny lobsters	1,437	1,080	14,209	13.2
Slipper lobsters	4	3	26	8.50
Crabs	2,615	1,476	7,785	5.27
Shrimp (saltwater)	2,105	151	361	2.40
Octopus	1,256	1,256	5,278	4.20
Limpets (saltwater)	1,010	1,010	5,482	5.43
Invertebrates	120	120	721	6.00
Algae	1,152	536	4,798	8.96
TOTAL	3,833,107	3,470,371	8,704,015	2.51

Table D-5
Hawaii April 2011 Reported Commercial Landings

Species	Caught	Sold	Value (\$)	Price/Lb (\$)
Miscellaneous	288	229	879	3.84
Sharks	18,923	14,420	13,248	0.92
Eels	135	0	0	0.00
Bigeye scad (akule)	38,658	18,267	63,570	3.48
Mackerel scad	21,398	10,508	30,088	2.86
Leatherjacket	28	17	37	2.16
Ten pounder	105	105	131	1.25
Bonefish	2,402	2,240	2,639	1.18
Milkfish	345	42	50	1.18
Needlefishes	27	27	40	1.50
Threadfin	189	189	1,323	7.02
Mulletts	2,145	1,567	7,031	4.49
Pomfret	41,228	41,228	126,569	3.07
Oilfish	52,638	52,638	82,978	1.58
Jacks	134	134	399	2.97
Kahala (amberjack)	1,918	650	1,300	2.00
Sasa ulua	92	40	110	2.76
Butaguchi (pig-lipped ulua)	83	0	0	0.00
Dobe ulua	35	23	50	2.20
Papa ulua	864	821	3,470	4.22
White ulua	3,453	1,449	3,648	2.52
Gunkan (black) ulua	74	0	0	0.00
Blue trevally	957	588	1,448	2.46
Blue spot grouper	582	382	1,329	3.47
Snappers	341	304	1,112	3.66
Ta'ape (blue-lined snapper)	5,331	4,707	7,829	1.66
Uku (gray snapper)	17,278	15,176	57,607	3.80
Porgy	703	703	2,887	4.11
Reef fishes (unknown)	92	0	0	0.00
Reef jacks	7	4	15	4.25
Squirrelfishes	6,305	5,105	22,070	4.32
Scorpionfishes	209	99	327	3.30
Hawaiian flagtail	109	58	262	4.53
Bigeyes/Glasseyes (priacanthids)	318	318	1,150	3.62
Goatfishes	5,887	4,471	21,424	4.79
Rudderfish	3,374	2,849	3,897	1.37
Damselfishes	262	210	585	2.79
Hawkfishes	55	55	145	2.64
Tilapia	1,038	62	82	1.32
Wrasses	962	510	1,937	3.80
Parrotfishes	7,791	5,951	19,744	3.32
Surgeonfishes/tangs	12,811	9,816	18,279	1.86
Flounders	6	0	0	0.00

Table D-5 (continued)
Hawaii April 2011 Reported Commercial Landings

Species	Caught	Sold	Value (\$)	Price/Lb (\$)
Filefishes	54	54	87	1.61
Pelagic fishes (unknown)	47	0	0	0.00
Moonfish (opah)	50,705	48,357	138,088	2.86
Rainbow runner	337	133	213	1.61
Mahimahi	199,359	160,160	518,629	3.24
Barracudas	7,166	7,166	5,929	0.83
Wahoo	120,711	105,088	253,604	2.41
Tunas (unknown)	930	930	2,369	2.55
Skipjack tuna	62,429	28,923	44,547	1.54
Yellowfin tuna	319,015	283,620	834,094	2.94
Albacore tuna	71,321	55,593	127,447	2.29
Bigeye tuna	1,153,170	1,073,649	4,010,764	3.74
Kawakawa	751	211	595	2.82
Billfishes (unknown)	90	0	0	0.00
Swordfish	704,382	502,049	1,131,987	2.25
Blue marlin	99,988	77,222	98,592	1.28
Black marlin	229	0	0	0.00
Striped marlin	79,118	79,118	110,079	1.39
Shortnose spearfish	40,856	36,693	48,141	1.31
Sailfish	2,515	1,210	1,303	1.08
Spiny lobsters	2,131	2,070	26,867	13.0
Slipper lobsters	31	0	0	0.00
Crabs	4,298	757	4,669	6.16
Shrimp (saltwater)	1,495	86	171	2.00
Octopus	2,591	1,796	8,141	4.53
Squid	194	194	459	2.37
Limpets (saltwater)	2,670	783	4,932	6.30
Invertebrates	61	61	426	7.00
Algae	948	651	5,340	8.20
TOTAL	3,177,166	2,662,535	7,877,158	2.96

Table D-6
Hawaii May 2011 Reported Commercial Landings

Species	Caught	Sold	Value (\$)	Price/Lb (\$)
Miscellaneous	162	162	176	1.08
Sharks	19,888	15,840	11,321	0.71
Eels	81	20	39	1.90
Bigeye scad (akule)	30,080	20,536	65,920	3.21
Mackerel scad	18,945	10,322	27,936	2.71
Leatherjacket	18	18	42	2.32
Ten pounder	27	27	27	1.00
Bonefish	1,149	932	1,161	1.25
Needlefishes	79	79	135	1.70
Threadfin	105	91	710	7.80
Mulletts	282	230	1,118	4.87
Pomfret	37,187	37,187	117,798	3.17
Oilfish	53,419	53,419	91,820	1.72
Jacks	226	226	582	2.58
Kahala (amberjack)	871	162	112	0.69
Sasa ulua	24	3	10	4.00
Papa ulua	1,181	1,181	5,205	4.41
White ulua	1,830	739	1,808	2.45
Gunkan (black) ulua	16	0	0	0.00
Blue trevally	704	226	529	2.34
Blue spot grouper	456	286	859	3.00
Snappers	408	318	1,218	3.83
Ta'ape (blue-lined snapper)	5,208	1,458	2,697	1.85
Uku (gray snapper)	13,565	12,130	48,059	3.96
Porgy	2,084	1,537	5,262	3.42
Reef fishes (unknown)	24	0	0	0.00
Reef jacks	4	4	18	4.50
Squirrelfishes	5,590	5,590	24,901	4.45
Trumpetfish	4	4	5	1.39
Scorpionfishes	116	73	239	3.28
Hawaiian flagtail	97	44	186	4.20
Bigeyes/Glasseyes (priacanthids)	272	272	1,069	3.93
Goatfishes	5,664	3,959	19,534	4.93
Rudderfish	2,294	1,332	1,975	1.48
Damselfishes	208	208	707	3.39
Hawkfishes	130	130	300	2.30
Tilapia	180	0	0	0.00
Wrasses	606	559	2,875	5.14
Parrotfishes	4,688	4,688	16,640	3.55
Surgeonfishes/tangs	9,274	7,982	13,828	1.73
Filefishes	122	106	139	1.31
Pelagic fishes (unknown)	16	0	0	0.00
Moonfish (opah)	75,178	70,115	163,538	2.33

Table D-6 (continued)
Hawaii May 2011 Reported Commercial Landings

Species	Caught	Sold	Value (\$)	Price/Lb (\$)
Rainbow runner	184	82	151	1.85
Mahimahi	157,755	142,925	454,349	3.18
Barracudas	8,851	8,851	4,836	0.55
Wahoo	100,264	84,472	238,567	2.82
Tunas (unknown)	1,849	1,849	4,083	2.21
Skipjack tuna	72,628	35,078	51,149	1.46
Yellowfin tuna	326,428	289,804	856,872	2.96
Albacore tuna	77,838	76,582	160,897	2.10
Bigeye tuna	1,080,801	1,033,706	4,193,003	4.06
Kawakawa	628	314	767	2.44
Billfishes (unknown)	180	0	0	0.00
Swordfish	571,831	561,791	1,244,750	2.22
Blue marlin	115,666	94,495	90,373	0.96
Black marlin	911	0	0	0.00
Striped marlin	102,457	102,457	99,837	0.97
Shortnose spearfish	35,506	31,355	45,782	1.46
Sailfish	1,352	842	584	0.69
Crabs	1,993	214	1,275	5.96
Shrimp (saltwater)	924	94	266	2.83
Octopus	1,266	748	3,393	4.53
Squid	43	43	122	2.82
Limpets (saltwater)	959	959	5,793	6.04
Algae	1,303	614	3,509	5.71
TOTAL	2,954,079	2,719,472	8,090,852	2.98

Table D-7
Hawaii June 2011 Reported Commercial Landings

Species	Caught	Sold	Value (\$)	Price/Lb (\$)
Miscellaneous	1,974	1,974	1,969	1.00
Sharks	43,386	22,316	10,754	0.48
Rays	69	0	0	0.00
Eels	103	74	80	1.08
Bigeye scad (akule)	43,898	22,964	76,998	3.35
Mackerel scad	14,429	8,295	22,382	2.70
Leatherjacket	34	32	80	2.50
Ten pounder	357	357	1,424	3.99
Bonfish	403	343	344	1.00
Milkfish	22	22	36	1.67
Needlefishes	10	10	16	1.71
Mulletts	2,050	135	595	4.41
Pomfret	28,995	26,934	112,827	4.19
Oilfish	75,622	75,622	60,331	0.80
Jacks	38	14	34	2.50
Kahala (amberjack)	245	245	490	2.00
Sasa ulua	88	35	84	2.40
Butaguchi (pig-lipped ulua)	46	0	0	0.00
Dobe ulua	139	2	5	2.50
Papa ulua	881	881	3,397	3.86
White ulua	1,302	1,302	2,757	2.12
Gunkan (black) ulua	186	0	0	0.00
Blue trevally	622	206	482	2.34
Blue spot grouper	667	667	2,215	3.32
Snappers	349	349	1,220	3.50
Ta'ape (blue-lined snapper)	4,684	817	1,379	1.69
Lehi (silverjaw snapper, rusty jobfish)	8	8	8	1.10
Uku (gray snapper)	14,534	13,473	63,924	4.74
Porgy	310	310	912	2.94
Reef fishes (unknown)	147	0	0	0.00
Reef jacks	1	1	6	4.50
Squirrelfishes	4,326	4,060	17,746	4.37
Trumpetfish	78	69	65	0.95
Scorpionfishes	238	172	599	3.49
Hawaiian flagtail	166	42	219	5.19
Bigeyes/Glasseyes (priacanthids)	109	109	394	3.60
Goatfishes	5,051	2,984	14,359	4.81
Rudderfish	2,407	1,423	2,179	1.53
Damselfishes	144	144	457	3.18
Hawkfishes	102	102	319	3.14
Wrasses	501	282	1,037	3.68
Parrotfishes	6,954	6,352	21,503	3.39
Surgeonfishes/tangs	10,558	7,578	12,761	1.68

Table D-7 (continued)
Hawaii June 2011 Reported Commercial Landings

Species	Caught	Sold	Value (\$)	Price/Lb (\$)
Flounders	30	4	6	1.50
Filefishes	121	98	119	1.21
Pufferfishes	85	0	0	0.00
Pelagic fishes (unknown)	142	0	0	0.00
Moonfish (opah)	152,143	139,103	267,225	1.92
Rainbow runner	567	368	611	1.66
Mahimahi	83,116	68,473	274,041	4.00
Barracudas	12,676	10,388	8,265	0.80
Wahoo	88,207	76,521	238,046	3.11
Tunas (unknown)	1,249	1,249	4,174	3.34
Skipjack tuna	86,242	44,436	71,106	1.60
Yellowfin tuna	434,227	354,897	1,087,978	3.07
Albacore tuna	137,854	97,560	167,152	1.71
Bigeye tuna	931,832	881,061	3,706,515	4.21
Kawakawa	623	317	726	2.29
Swordfish	249,288	249,288	643,517	2.58
Blue marlin	164,767	130,509	125,438	0.96
Black marlin	258	0	0	0.00
Striped marlin	109,683	109,683	116,239	1.06
Shortnose spearfish	33,362	29,744	46,820	1.57
Sailfish	1,684	1,267	1,265	1.00
Crabs	1,909	103	617	6.02
Shrimp (saltwater)	475	176	400	2.28
Octopus	1,538	1,206	5,444	4.52
Squid	415	415	918	2.21
Limpets (saltwater)	941	430	2,986	6.95
Algae	2,013	807	5,985	7.41
TOTAL	2,761,674	2,398,804	7,211,977	3.01

Table D-8
Hawaii July 2011 Reported Commercial Landings

Species	Caught	Sold	Value (\$)	Price/Lb (\$)
Miscellaneous	1,008	1,008	1,116	1.11
Sharks	11,549	11,549	8,255	0.71
Eels	145	34	35	1.04
Bigeye scad (akule)	31,462	14,331	48,389	3.38
Mackerel scad	11,623	6,889	19,338	2.81
Leatherjacket	7	7	17	2.37
Ten pounder	9	6	7	1.25
Bonefish	829	760	949	1.25
Herrings/sardines	643	643	1,286	2.00
Milkfish	26	17	22	1.28
Needlefishes	17	17	13	0.75
Mulletts	963	960	4,116	4.29
Pomfret	24,908	24,908	117,356	4.71
Oilfish	31,537	31,361	72,723	2.32
Jacks	148	148	412	2.79
Kahala (amberjack)	153	21	43	2.00
Sasa ulua	159	10	25	2.50
Dobe ulua	74	74	198	2.68
Papa ulua	439	270	1,239	4.60
White ulua	1,269	822	1,854	2.26
Gunkan (black) ulua	48	0	0	0.00
Blue trevally	946	479	1,350	2.82
Blue spot grouper	362	254	750	2.96
Snappers	578	578	2,243	3.88
Ta'ape (blue-lined snapper)	2,266	2,162	3,947	1.83
Lehi (silverjaw snapper, rusty jobfish)	4	4	5	1.10
Uku (gray snapper)	10,609	9,186	48,840	5.32
Porgy	326	273	787	2.88
Reef fishes (unknown)	126	0	0	0.00
Reef jacks	3	0	0	0.00
Squirrelfishes	4,611	4,611	19,602	4.25
Trumpetfish	17	17	29	1.65
Scorpionfishes	198	135	476	3.51
Hawaiian flagtail	125	27	104	3.86
Bigeyes/Glasseyes (priacanthids)	244	244	999	4.10
Goatfishes	3,842	3,842	18,865	4.91
Rudderfish	6,914	6,393	8,700	1.36
Damselfishes	196	196	572	2.92
Hawkfishes	125	125	432	3.47
Wrasses	642	376	1,565	4.16
Parrotfishes	4,555	4,555	16,771	3.68
Surgeonfishes/tangs	10,651	9,421	17,081	1.81
Flounders	5	5	9	1.85

Table D-8 (continued)
Hawaii July 2011 Reported Commercial Landings

Species	Caught	Sold	Value (\$)	Price/Lb (\$)
Filefishes	102	46	52	1.15
Pelagic fishes (unknown)	8	0	0	0.00
Moonfish (opah)	199,139	198,429	324,408	1.63
Rainbow runner	423	270	496	1.84
Mahimahi	82,542	72,085	304,974	4.23
Barracudas	9,078	9,078	8,249	0.91
Wahoo	67,085	54,757	208,661	3.81
Tunas (unknown)	1,456	1,456	4,289	2.95
Skipjack tuna	141,018	95,176	152,155	1.60
Yellowfin tuna	433,959	404,907	1,126,592	2.78
Albacore tuna	98,698	91,759	161,755	1.76
Bigeye tuna	708,705	708,705	3,349,680	4.73
Kawakawa	609	176	473	2.68
Billfishes (unknown)	184	184	434	2.36
Swordfish	74,002	74,002	226,327	3.06
Blue marlin	140,838	101,679	165,822	1.63
Black marlin	2,276	0	0	0.00
Striped marlin	23,866	18,768	47,355	2.52
Shortnose spearfish	19,808	17,867	54,330	3.04
Sailfish	1,731	1,731	3,234	1.87
Crabs	1,778	41	314	7.66
Shrimp (saltwater)	130	79	509	6.44
Octopus	1,914	1,163	5,097	4.38
Squid	449	449	1,010	2.25
Limpets (saltwater)	2,027	1,085	7,741	7.13
Algae	2,373	733	6,231	8.50
TOTAL	2,178,551	1,991,340	6,580,706	3.30

Table D-9
Hawaii August 2011 Reported Commercial Landings

Species	Caught	Sold	Value (\$)	Price/Lb (\$)
Miscellaneous	1,128	1,128	1,497	1.33
Sharks	17,359	11,278	10,084	0.89
Eels	160	28	35	1.23
Bigeye scad (akule)	14,955	7,482	25,998	3.47
Mackerel scad	18,645	10,920	30,869	2.83
Leatherjacket	27	22	56	2.50
Ten pounder	78	54	62	1.15
Bonefish	964	964	762	0.79
Herrings/sardines	1	0	0	0.00
Milkfish	143	143	198	1.38
Needlefishes	11	0	0	0.00
Mulletts	1,304	536	2,409	4.50
Pomfret	22,061	21,769	101,092	4.64
Oilfish	33,804	33,804	93,852	2.78
Jacks	27	11	41	3.68
Kahala (amberjack)	187	187	370	1.98
Sasa ulua	196	13	46	3.50
Butaguchi (pig-lipped ulua)	27	0	0	0.00
Dobe ulua	369	225	451	2.00
Papa ulua	403	403	738	1.83
White ulua	1,394	344	739	2.15
Gunkan (black) ulua	346	0	0	0.00
Blue trevally	391	159	407	2.56
Blue spot grouper	587	536	1,796	3.35
Snappers	301	301	1,018	3.38
Ta'ape (blue-lined snapper)	3,995	1,801	2,886	1.60
Lehi (silverjaw snapper, rusty jobfish)	9	9	10	1.10
Onaga (red snapper)	10	0	0	0.00
Uku (gray snapper)	8,964	7,250	34,207	4.72
Snake mackerel	15	0	0	0.00
Porgy	365	362	1,126	3.11
Reef fishes (unknown)	143	0	0	0.00
Reef jacks	7	6	25	4.50
Squirrelfishes	6,714	6,714	28,715	4.28
Trumpetfish	5	5	10	2.00
Scorpionfishes	202	202	702	3.48
Hawaiian flagtail	209	209	806	3.85
Bigeyes/Glasseyes (priacanthids)	250	200	701	3.51
Goatfishes	4,561	3,674	20,855	5.68
Rudderfish	2,023	1,439	2,155	1.50
Damselfishes	471	471	1,226	2.60
Hawkfishes	152	152	485	3.18
Tilapia	175	147	158	1.07

Table D-9 (continued)
Hawaii August 2011 Reported Commercial Landings

Species	Caught	Sold	Value (\$)	Price/Lb (\$)
Wrasses	607	449	1,739	3.87
Parrotfishes	5,995	5,995	22,062	3.68
Surgeonfishes/tangs	11,029	10,062	17,619	1.75
Flounders	1	0	0	0.00
Filefishes	37	37	54	1.47
Moonfish (opah)	243,422	243,422	363,535	1.49
Rainbow runner	367	269	332	1.23
Mahimahi	120,829	110,934	421,850	3.80
Barracudas	5,307	4,635	6,027	1.30
Wahoo	49,873	41,761	172,858	4.14
Tunas (unknown)	2,506	2,506	7,939	3.17
Skipjack tuna	116,180	97,497	175,212	1.80
Yellowfin tuna	360,426	332,304	981,965	2.96
Albacore tuna	167,989	167,989	328,090	1.95
Bigeye tuna	931,359	931,359	4,272,706	4.59
Kawakawa	451	68	200	2.94
Billfishes (unknown)	120	120	300	2.50
Swordfish	110,957	102,810	297,792	2.90
Blue marlin	125,935	103,378	161,657	1.56
Black marlin	1,559	0	0	0.00
Striped marlin	17,636	15,403	39,232	2.55
Shortnose spearfish	24,287	24,287	52,110	2.15
Sailfish	2,471	2,471	4,926	1.99
Crabs	2,330	63	324	5.18
Shrimp (saltwater)	312	312	2,670	8.57
Octopus	2,718	2,199	9,698	4.41
Squid	362	290	515	1.78
Limpets (saltwater)	1,089	427	2,488	5.83
Algae	1,678	312	1,900	6.09
TOTAL	2,450,967	2,314,307	7,712,383	3.33

Table D-10
Hawaii September 2011 Reported Commercial Landings

Species	Caught	Sold	Value (\$)	Price/Lb (\$)
Miscellaneous	1,153	1,153	2,012	1.75
Sharks	13,982	10,590	9,101	0.86
Eels	238	37	37	1.00
Bigeye scad (akule)	17,548	8,158	28,477	3.49
Mackerel scad	30,859	18,439	51,628	2.80
Leatherjacket	20	20	49	2.50
Ten pounder	189	189	233	1.24
Bonefish	1,192	1,192	1,476	1.24
Milkfish	32	12	17	1.50
Flying fishes	1	1	2	2.00
Needlefishes	63	12	8	0.69
Threadfin	42	28	225	8.00
Mullet	1,034	1,034	4,198	4.06
Pomfret	34,825	34,825	111,793	3.21
Oilfish	26,525	26,525	71,531	2.70
Jacks	329	329	1,048	3.19
Kahala (amberjack)	1,792	221	291	1.32
Sasa ulua	216	115	299	2.59
Butaguchi (pig-lipped ulua)	91	42	169	4.01
Dobe ulua	153	0	0	0.00
Papa ulua	731	731	2,550	3.49
White ulua	2,142	601	1,394	2.32
Gunkan (black) ulua	371	0	0	0.00
Blue trevally	889	385	936	2.43
Hapu'upu'u (Hawaiian grouper)	2,511	2,511	11,700	4.66
Blue spot grouper	384	306	958	3.13
Kalekale	2,311	1,530	5,616	3.67
Snappers	1,035	948	4,293	4.53
Yellow-tail kale	3	2	5	3.00
Ta'ape (blue-lined snapper)	5,569	2,830	4,566	1.61
Ehu (red snapper)	4,910	3,496	17,852	5.11
Gindai (flower snapper)	814	571	2,328	4.08
Golden kalekale	28	10	38	3.71
Lehi (silverjaw snapper, rusty jobfish)	560	479	1,936	4.04
Onaga (red snapper)	12,165	10,377	73,175	7.05
Opakapaka (pink snapper)	16,303	12,850	75,040	5.84
Uku (gray snapper)	9,515	8,403	35,236	4.19
Snake mackerel	2	0	0	0.00
Porgy	529	529	1,617	3.06
Reef fishes (unknown)	85	0	0	1.00
Reef jacks	4	0	0	0.00
Squirrelfishes	10,852	10,852	45,062	4.15
Trumpetfish	18	12	23	1.82

Table D-10 (continued)
Hawaii September 2011 Reported Commercial Landings

Species	Caught	Sold	Value (\$)	Price/Lb (\$)
Scorpionfishes	360	215	1,245	5.78
Hawaiian flagtail	105	57	253	4.40
Bigeyes/Glasseyes (priacanthids)	369	369	1,328	3.60
Goatfishes	6,047	4,069	25,444	6.25
Rudderfish	1,254	1,041	1,683	1.62
Damselfishes	173	173	501	2.89
Hawkfishes	121	121	382	3.16
Tilapia	60	35	45	1.29
Wrasses	904	822	3,435	4.18
Parrotfishes	8,313	7,493	26,093	3.48
Surgeonfishes/tangs	12,677	11,569	20,671	1.79
Flounders	6	4	7	1.85
Filefishes	74	33	38	1.16
Moonfish (opah)	268,049	261,307	293,474	1.12
Rainbow runner	749	463	554	1.20
Mahimahi	166,336	152,016	432,242	2.84
Barracudas	2,800	2,740	4,130	1.51
Wahoo	44,314	34,569	121,982	3.53
Tunas (unknown)	259	259	628	2.43
Skipjack tuna	194,891	162,669	234,466	1.44
Yellowfin tuna	207,904	186,914	605,127	3.24
Albacore tuna	195,289	170,627	260,568	1.53
Bigeye tuna	967,626	967,626	4,337,450	4.48
Kawakawa	676	245	518	2.12
Billfishes (unknown)	31	31	62	2.00
Swordfish	15,540	14,508	53,785	3.71
Blue marlin	112,800	96,252	146,795	1.53
Black marlin	818	0	0	0.00
Striped marlin	21,486	19,740	40,693	2.06
Shortnose spearfish	33,174	29,947	49,291	1.65
Sailfish	5,343	5,343	7,236	1.35
Spiny lobsters	1,816	1,693	21,003	12.4
Slipper lobsters	28	0	0	0.00
Crabs	4,991	1,625	7,626	4.69
Shrimp (saltwater)	203	203	2,131	10.5
Octopus	1,998	1,429	6,173	4.32
Squid	659	659	1,728	2.62
Limpets (saltwater)	1,265	315	1,660	5.27
Algae	1,088	294	2,643	8.99
TOTAL	2,482,607	2,297,824	7,280,013	3.17

Table D-11
Hawaii October 2011 Reported Commercial Landings

Species	Caught	Sold	Value (\$)	Price/Lb (\$)
Miscellaneous	914	914	920	1.01
Sharks	21,518	7,448	6,850	0.92
Eels	168	44	60	1.38
Bigeye scad (akule)	11,838	7,688	29,084	3.78
Mackerel scad	38,072	23,099	63,311	2.74
Leatherjacket	11	10	26	2.52
Ten pounder	16	16	24	1.53
Bonfish	410	395	493	1.25
Milkfish	28	28	33	1.20
Needlefishes	51	46	118	2.55
Threadfin	242	10	79	7.90
Mulletts	4,958	3,409	15,420	4.52
Pomfret	40,261	40,261	118,517	2.94
Oilfish	36,084	36,084	71,791	1.99
Jacks	79	61	180	2.94
Kahala (amberjack)	888	66	99	1.51
Sasa ulua	201	201	633	3.15
Butaguchi (pig-lipped ulua)	44	13	62	4.80
Dobe ulua	68	2	6	3.00
Papa ulua	786	544	2,307	4.24
White ulua	1,340	765	1,803	2.36
Gunkan (black) ulua	256	0	0	0.00
Blue trevally	388	55	171	3.11
Hapu'upu'u (Hawaiian grouper)	925	791	3,628	4.59
Blue spot grouper	374	374	1,323	3.53
Kalekale	1,045	799	3,014	3.77
Snappers	275	274	1,136	4.14
Yellow-tail kale	35	0	0	0.00
Ta'ape (blue-lined snapper)	2,557	1,264	2,217	1.75
Ehu (red snapper)	2,074	1,617	8,343	5.16
Gindai (flower snapper)	342	246	975	3.96
Golden kalekale	11	0	0	0.00
Lehi (silverjaw snapper, rusty jobfish)	403	307	1,161	3.78
Onaga (red snapper)	6,412	5,540	42,382	7.65
Opakapaka (pink snapper)	12,074	9,817	58,496	5.96
Uku (gray snapper)	6,226	6,124	28,336	4.63
Snake mackerel	6	0	0	0.00
Porgy	357	224	662	2.95
Reef fishes (unknown)	142	0	0	0.00
Squirrelfishes	6,711	6,340	26,963	4.25
Trumpetfish	34	34	67	2.00
Scorpionfishes	277	185	1,176	6.35
Hawaiian flagtail	116	36	160	4.48

Table D-11 (continued)
Hawaii October 2011 Reported Commercial Landings

Species	Caught	Sold	Value (\$)	Price/Lb (\$)
Bigeyes/Glasseyes (priacanthids)	261	261	726	2.78
Goatfishes	4,009	3,399	19,528	5.74
Rudderfish	1,098	557	1,009	1.81
Damselfishes	180	180	602	3.34
Hawkfishes	66	66	200	3.04
Wrasses	710	534	2,286	4.28
Parrotfishes	7,188	6,863	24,316	3.54
Surgeonfishes/tangs	8,613	8,547	15,606	1.83
Flounders	3	3	6	2.00
Filefishes	47	47	62	1.32
Moonfish (opah)	166,354	165,782	303,401	1.83
Rainbow runner	213	118	172	1.46
Mahimahi	175,747	157,336	482,148	3.06
Barracudas	2,260	1,658	2,661	1.60
Wahoo	26,133	20,205	82,479	4.08
Tunas (unknown)	1,589	1,589	5,528	3.48
Skipjack tuna	84,668	54,046	134,424	2.49
Yellowfin tuna	284,399	266,992	940,090	3.52
Albacore tuna	147,185	137,959	211,572	1.53
Bigeye tuna	1,047,837	1,015,487	4,547,752	4.48
Kawakawa	456	103	243	2.35
Billfishes (unknown)	630	330	623	1.89
Swordfish	42,289	6,617	25,466	3.85
Blue marlin	108,046	82,327	121,475	1.48
Black marlin	985	0	0	0.00
Striped marlin	72,025	72,025	110,480	1.53
Shortnose spearfish	22,175	20,416	42,310	2.07
Sailfish	2,208	2,023	3,254	1.61
Spiny lobsters	1,997	1,679	21,890	13.0
Slipper lobsters	18	0	0	0.00
Crabs	4,614	1,201	5,596	4.66
Shrimp (saltwater)	550	70	840	12.0
Octopus	3,518	1,941	8,494	4.38
Squid	924	622	2,150	3.45
Limpets (saltwater)	1,514	790	4,816	6.10
Invertebrates	2	2	18	9.00
Algae	355	191	1,931	10.1
TOTAL	2,419,881	2,187,097	7,616,178	3.48

Table D-12
Hawaii November 2011 Reported Commercial Landings

Species	Caught	Sold	Value (\$)	Price/Lb (\$)
Miscellaneous	57	57	51	0.89
Sharks	32,285	14,639	7,991	0.55
Eels	52	14	14	1.00
Bigeye scad (akule)	31,724	22,920	64,757	2.83
Mackerel scad	31,313	17,145	42,582	2.48
Leatherjacket	3	3	6	2.21
Ten pounder	8	8	9	1.15
Bonefish	5,548	5,548	6,918	1.25
Herrings/sardines	223	223	446	2.00
Milkfish	4	0	0	0.00
Needlefishes	35	35	57	1.63
Threadfin	110	2	15	6.73
Mulletts	2,201	1,889	7,453	3.95
Pomfret	43,216	43,216	141,379	3.27
Oilfish	49,176	49,176	42,151	0.86
Jacks	269	269	805	2.99
Kahala (amberjack)	820	105	211	2.00
Sasa ulua	27	11	41	3.63
Butaguchi (pig-lipped ulua)	123	31	140	4.50
Dobe ulua	277	0	0	0.00
Papa ulua	816	816	3,125	3.83
White ulua	942	254	564	2.22
Gunkan (black) ulua	30	0	0	0.00
Blue trevally	295	155	382	2.46
Hapu'upu'u (Hawaiian grouper)	751	713	3,368	4.73
Blue spot grouper	292	276	810	2.94
Kalekale	804	710	2,515	3.54
Snappers	1,038	136	507	3.73
Ta'ape (blue-lined snapper)	1,767	727	1,293	1.78
Ehu (red snapper)	1,668	1,490	7,639	5.13
Gindai (flower snapper)	196	123	555	4.51
Golden kalekale	17	0	0	0.00
Lehi (silverjaw snapper, rusty jobfish)	419	378	1,549	4.10
Onaga (red snapper)	3,353	2,648	21,445	8.10
Opakapaka (pink snapper)	8,628	6,409	37,325	5.82
Uku (gray snapper)	3,993	3,242	15,168	4.68
Porgy	431	283	835	2.95
Reef fishes (unknown)	58	0	0	0.00
Reef jacks	16	0	0	0.00
Squirrelfishes	4,458	3,718	16,224	4.36
Trumpetfish	22	22	36	1.66
Scorpionfishes	182	182	1,017	5.60
Hawaiian flagtail	285	203	611	3.01

Table D-12 (continued)
Hawaii November 2011 Reported Commercial Landings

Species	Caught	Sold	Value (\$)	Price/Lb (\$)
Bigeyes/Glasseyes (priacanthids)	130	130	481	3.69
Goatfishes	3,584	3,172	19,211	6.06
Rudderfish	961	397	861	2.17
Damselfishes	135	135	419	3.11
Hawkfishes	48	48	125	2.58
Wrasses	474	286	1,109	3.88
Parrotfishes	6,195	6,195	20,399	3.29
Surgeonfishes/tangs	7,685	7,685	13,164	1.71
Flounders	14	14	26	1.89
Filefishes	6	6	9	1.59
Moonfish (opah)	95,972	95,972	235,671	2.46
Rainbow runner	409	206	379	1.84
Mahimahi	120,633	110,059	353,345	3.21
Barracudas	1,520	1,326	2,216	1.67
Wahoo	15,433	13,171	58,043	4.41
Tunas (unknown)	1,722	1,722	5,807	3.37
Skipjack tuna	35,152	13,768	24,542	1.78
Yellowfin tuna	183,223	177,053	596,677	3.37
Albacore tuna	58,612	22,132	65,341	2.95
Bigeye tuna	1,067,237	1,067,237	4,578,822	4.29
Kawakawa	405	198	657	3.32
Swordfish	238,425	44,195	151,987	3.44
Blue marlin	73,862	57,128	101,745	1.78
Black marlin	1,555	0	0	0.00
Striped marlin	73,545	73,545	135,140	1.84
Shortnose spearfish	15,817	13,261	27,087	2.04
Sailfish	1,835	555	838	1.51
Spiny lobsters	741	560	5,958	10.6
Slipper lobsters	34	0	0	0.00
Crabs	2,113	1,534	6,409	4.18
Shrimp (saltwater)	456	0	0	0.00
Octopus	4,220	2,968	12,485	4.21
Squid	126	63	126	2.00
Limpets (saltwater)	1,090	594	3,306	5.56
Algae	532	362	3,499	9.67
TOTAL	2,241,828	1,893,450	6,855,873	3.62

Table D-13
Hawaii December 2011 Reported Commercial Landings

Species	Caught	Sold	Value (\$)	Price/Lb (\$)
Miscellaneous	514	514	577	1.12
Sharks	23,701	17,019	6,428	0.38
Eels	79	79	79	1.00
Bigeye scad (akule)	35,520	28,362	76,597	2.70
Mackerel scad	28,902	19,817	50,334	2.54
Leatherjacket	135	135	337	2.50
Ten pounder	152	152	190	1.25
Bonefish	242	238	280	1.18
Herrings/sardines	300	0	0	0.00
Milkfish	62	17	23	1.36
Needlefishes	44	14	28	2.00
Threadfin	147	70	551	7.91
Mulletts	138	138	482	3.50
Pomfret	54,058	54,058	161,298	2.98
Oilfish	76,708	76,708	53,839	0.70
Jacks	217	217	661	3.04
Kahala (amberjack)	2,456	251	502	2.00
Sasa ulua	28	3	12	4.00
Butaguchi (pig-lipped ulua)	10	0	0	0.00
Dobe ulua	94	94	315	3.33
Papa ulua	793	682	3,031	4.45
White ulua	1,697	557	1,745	3.13
Gunkan (black) ulua	229	46	262	5.77
Blue trevally	414	29	72	2.48
Hapu'upu'u (Hawaiian grouper)	875	795	3,762	4.73
Blue spot grouper	549	294	1,107	3.76
Kalekale	1,459	1,339	5,451	4.07
Snappers	180	180	618	3.43
Yellow-tail kale	1	0	0	0.00
Ta'ape (blue-lined snapper)	2,602	1,093	1,896	1.74
Ehu (red snapper)	4,989	3,387	19,812	5.85
Gindai (flower snapper)	556	296	1,602	5.42
Golden kalekale	16	0	0	0.00
Lehi (silverjaw snapper, rusty jobfish)	845	779	3,352	4.30
Onaga (red snapper)	7,015	6,449	67,731	10.5
Opakapaka (pink snapper)	11,777	11,777	64,907	5.51
Uku (gray snapper)	5,275	3,434	16,398	4.78
Porgy	932	218	641	2.94
Reef fishes (unknown)	62	0	0	0.00
Squirrelfishes	4,587	4,144	17,898	4.32
Trumpetfish	27	26	50	1.94
Scorpionfishes	316	222	1,249	5.64
Hawaiian flagtail	210	132	481	3.63

Table D-13 (continued)
Hawaii December 2011 Reported Commercial Landings

Species	Caught	Sold	Value (\$)	Price/Lb (\$)
Bigeyes/Glasseyes (priacanthids)	523	480	1,847	3.85
Goatfishes	4,894	4,894	23,791	4.86
Rudderfish	865	735	1,125	1.53
Damselfishes	173	173	500	2.89
Hawkfishes	58	58	180	3.12
Wrasses	329	215	773	3.60
Parrotfishes	5,571	5,437	18,571	3.42
Surgeonfishes/tangs	9,730	9,730	17,618	1.81
Flounders	14	0	0	0.00
Filefishes	31	31	52	1.68
Pelagic fishes (unknown)	118	18	2	0.10
Moonfish (opah)	155,212	155,212	290,988	1.87
Rainbow runner	377	248	417	1.68
Mahimahi	123,987	115,452	271,949	2.36
Barracudas	675	339	529	1.56
Wahoo	31,661	28,647	97,713	3.41
Tunas (unknown)	3,643	3,643	12,855	3.53
Skipjack tuna	53,796	30,652	56,974	1.86
Yellowfin tuna	331,711	308,493	1,023,888	3.32
Albacore tuna	90,102	86,166	122,707	1.42
Bigeye tuna	1,483,157	1,483,157	6,334,816	4.27
Kawakawa	380	142	327	2.31
Swordfish	41,004	41,004	128,090	3.12
Blue marlin	79,563	51,156	85,892	1.68
Striped marlin	121,751	121,751	177,028	1.45
Shortnose spearfish	44,258	36,242	39,757	1.10
Sailfish	1,338	398	520	1.30
Spiny lobsters	992	755	9,427	12.5
Slipper lobsters	10	0	0	0.00
Crabs	2,412	2,412	10,254	4.25
Shrimp (saltwater)	1,038	0	0	0.00
Octopus	5,580	2,528	11,479	4.54
Limpets (saltwater)	1,295	582	3,906	6.71
Invertebrates	43	0	0	0.00
Algae	432	384	3,705	9.66
TOTAL	2,865,631	2,724,897	9,312,277	3.42

The following are summary charts of the major species and species groups by month:

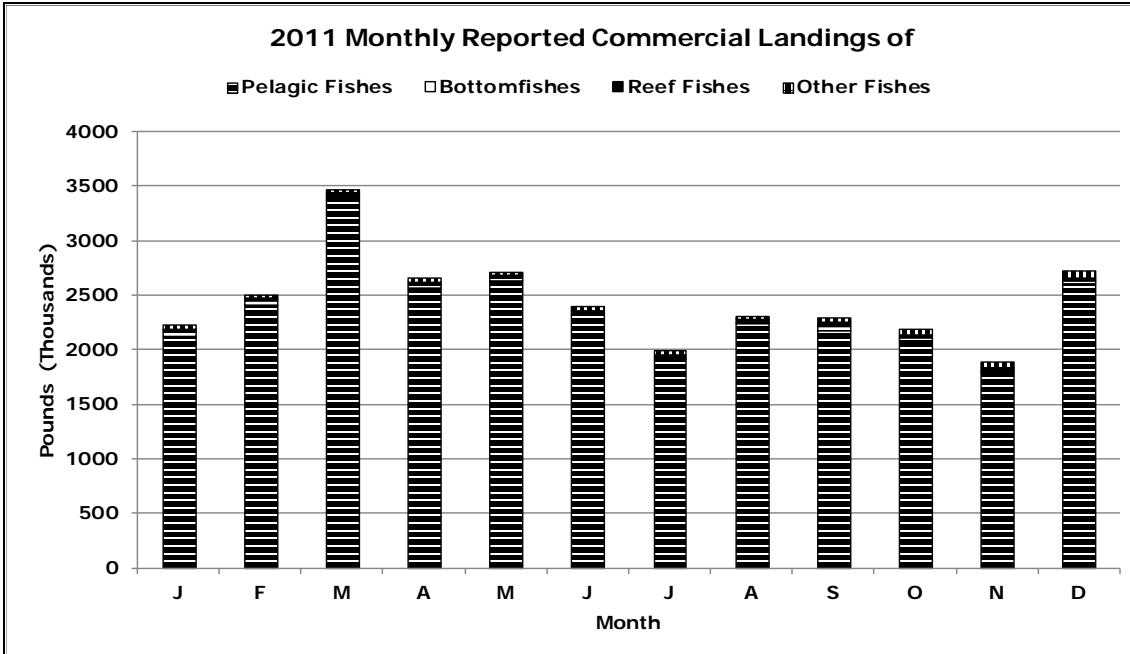


Figure D-1-1

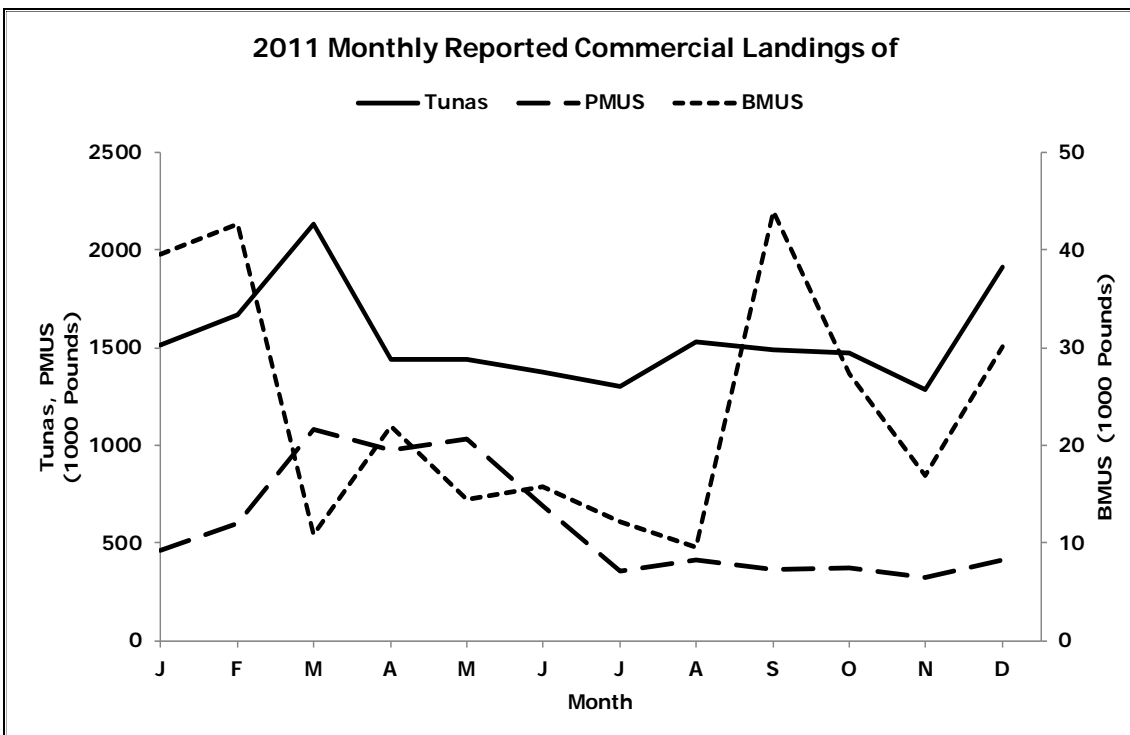


Figure D-1-2

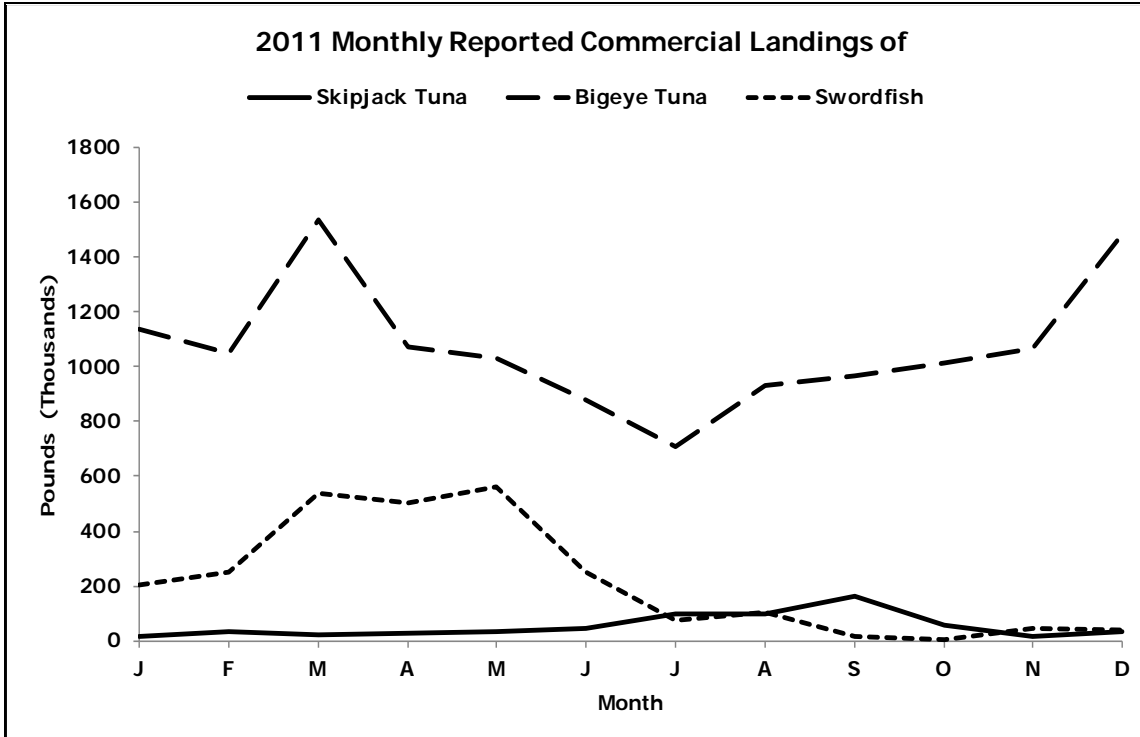


Figure D-1-3

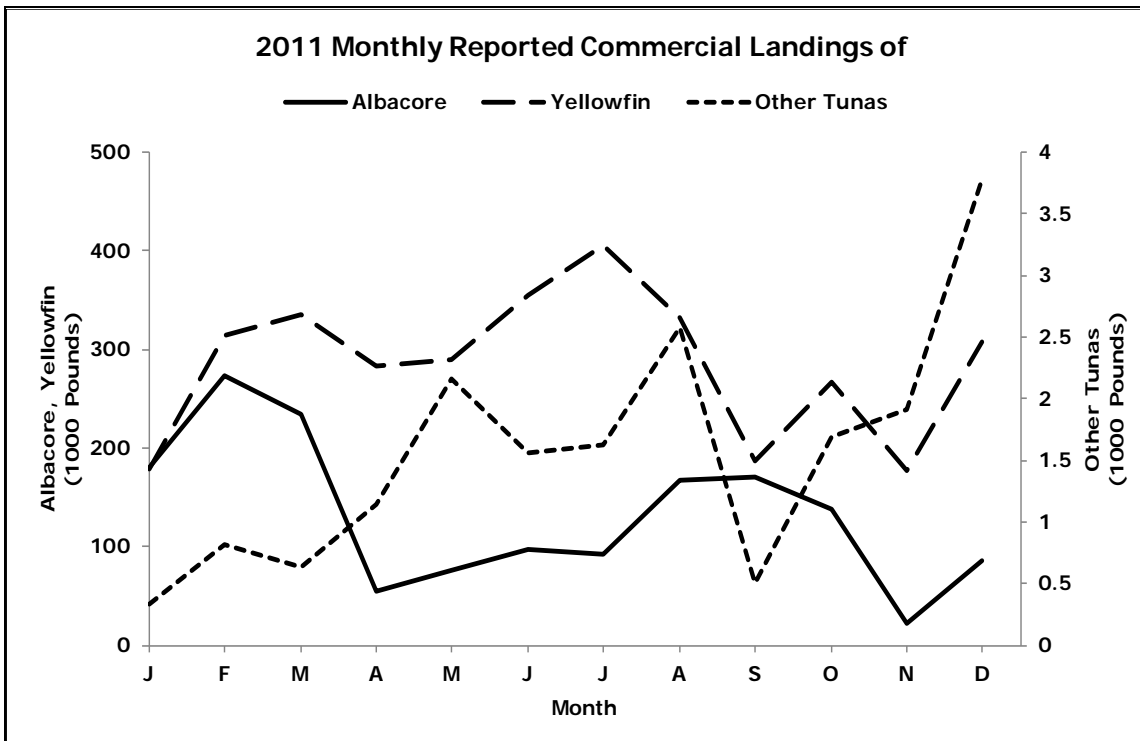


Figure D-1-4

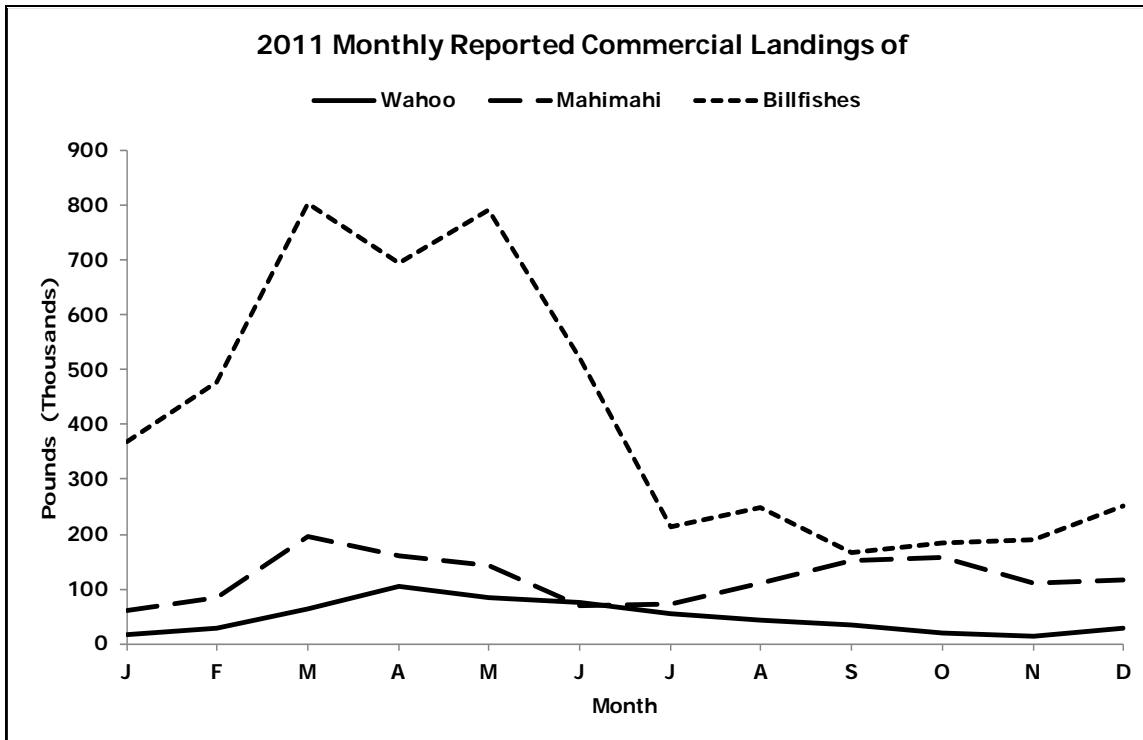


Figure D-1-5

The following are seasonality plots for the major species or species groups, showing the average weight landed during each month for all years combined:

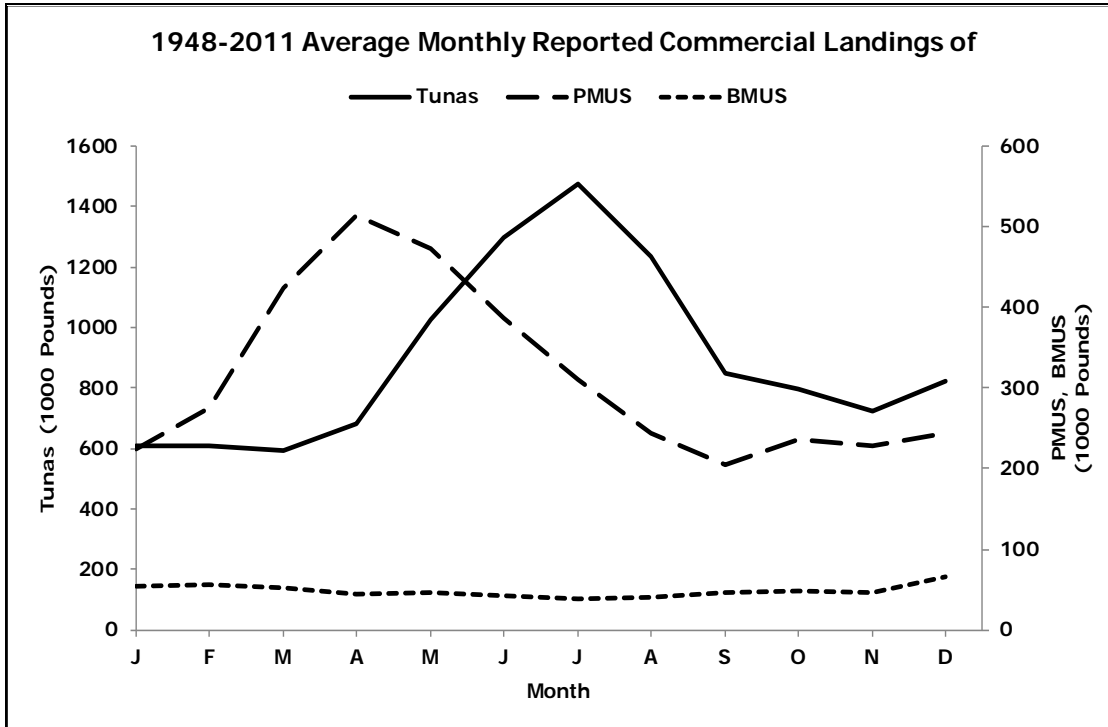


Figure D-2-1

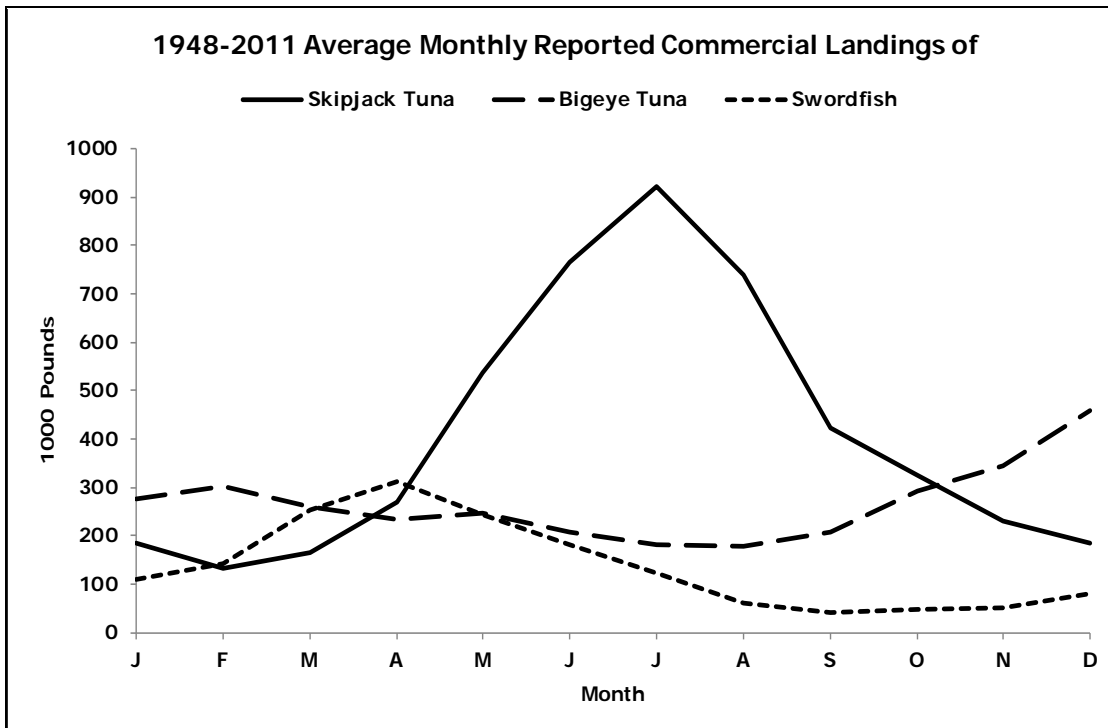


Figure D-2-2

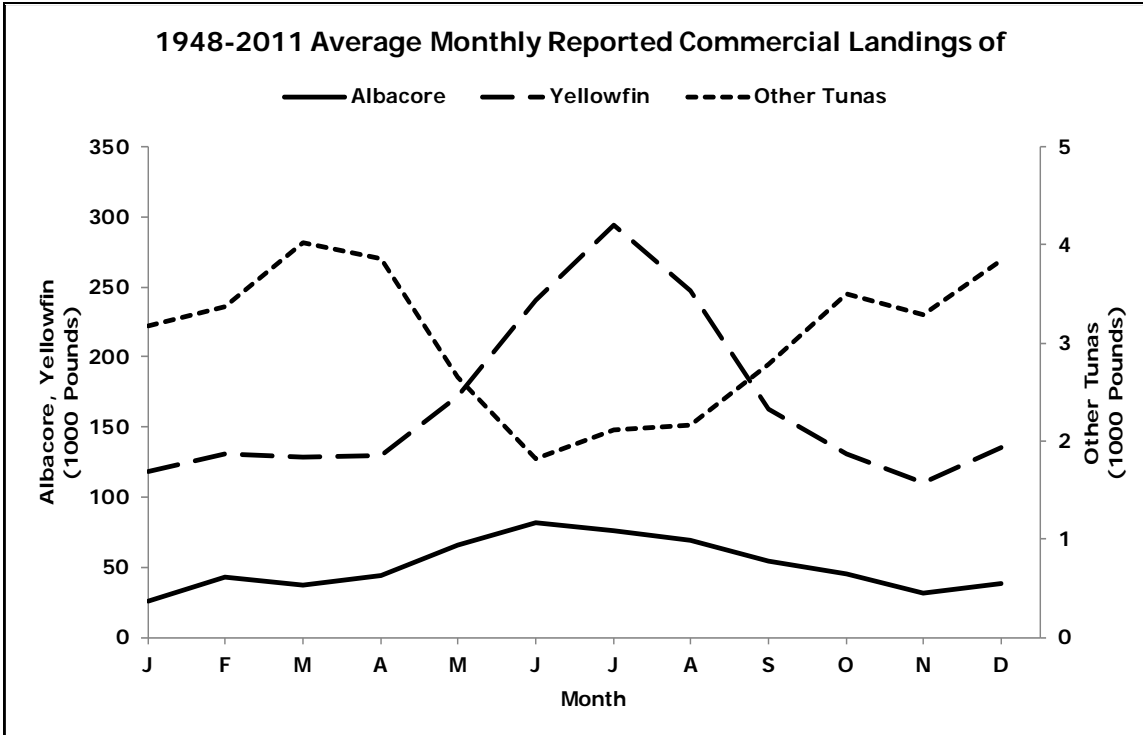


Figure D-2-3

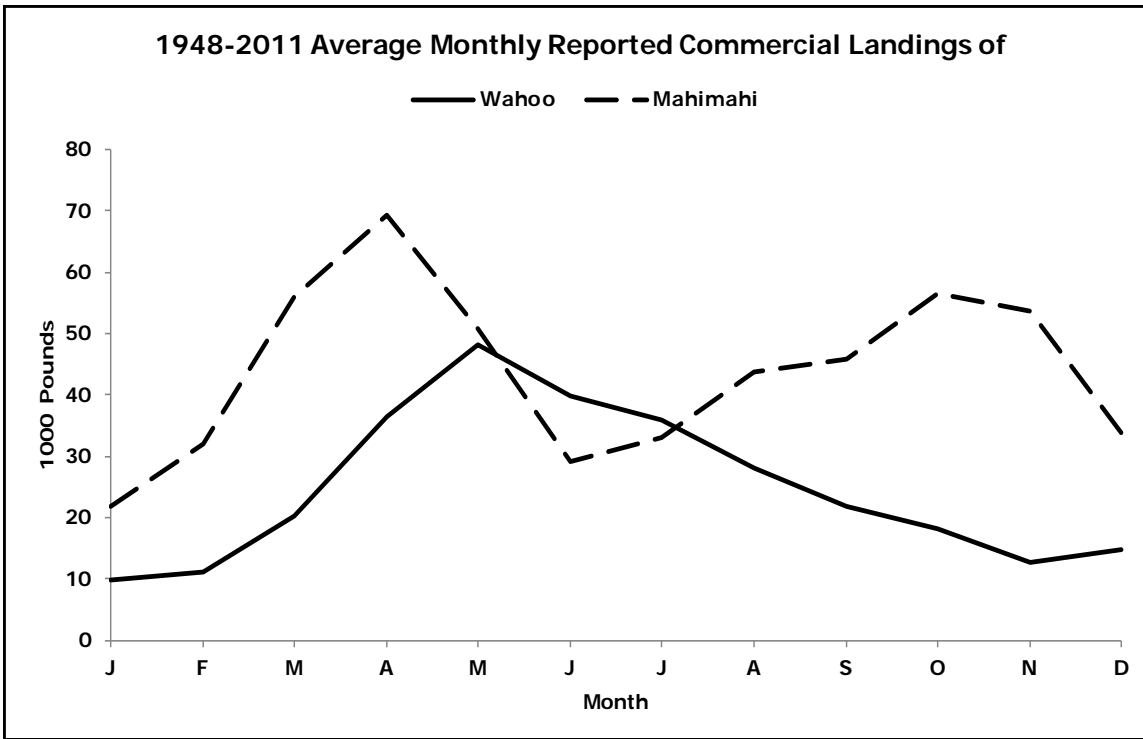


Figure D-2-4

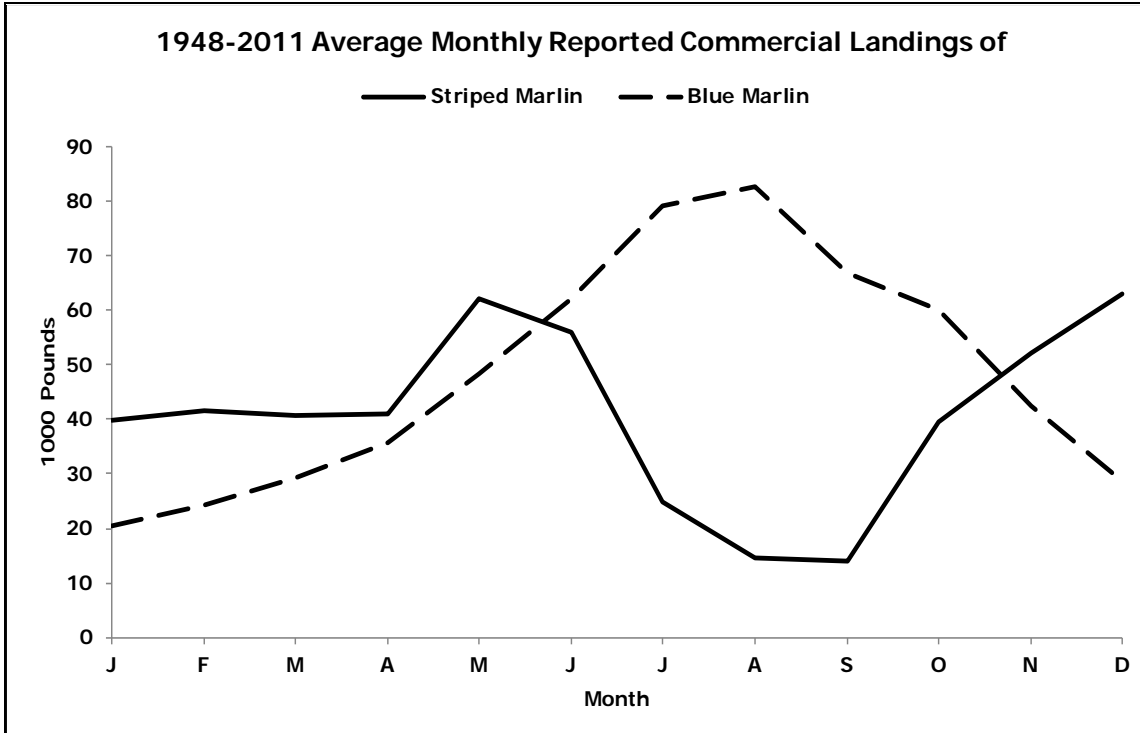


Figure D-2-5

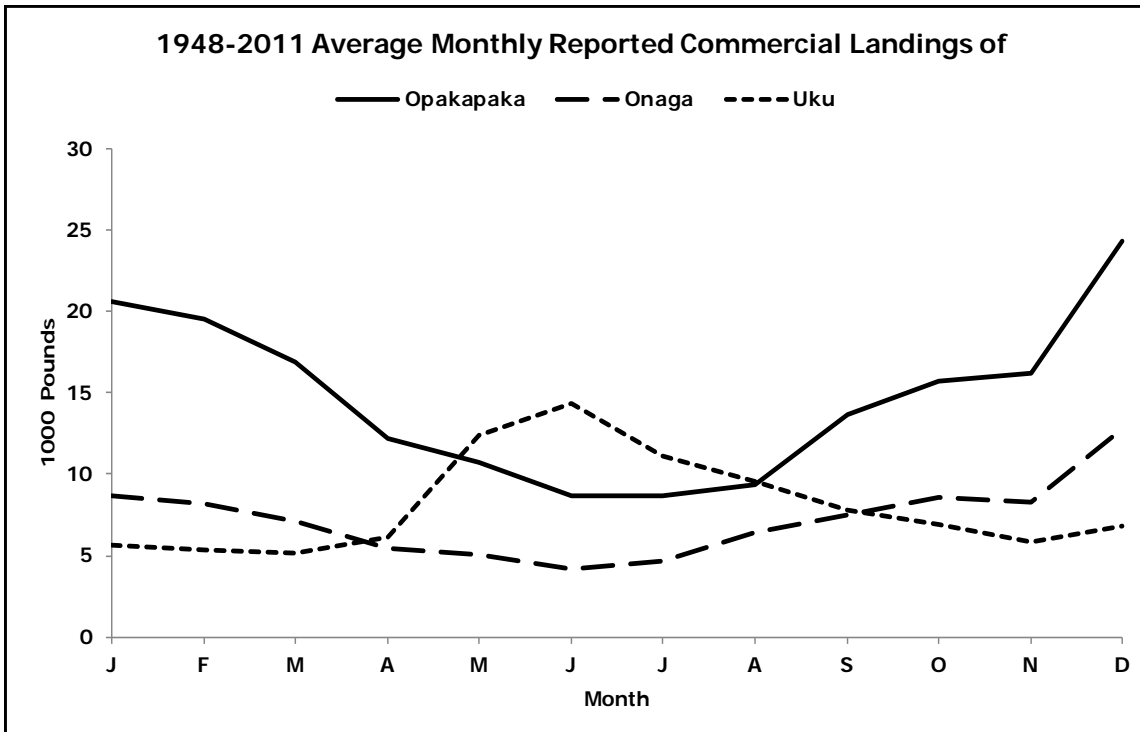


Figure D-2-6

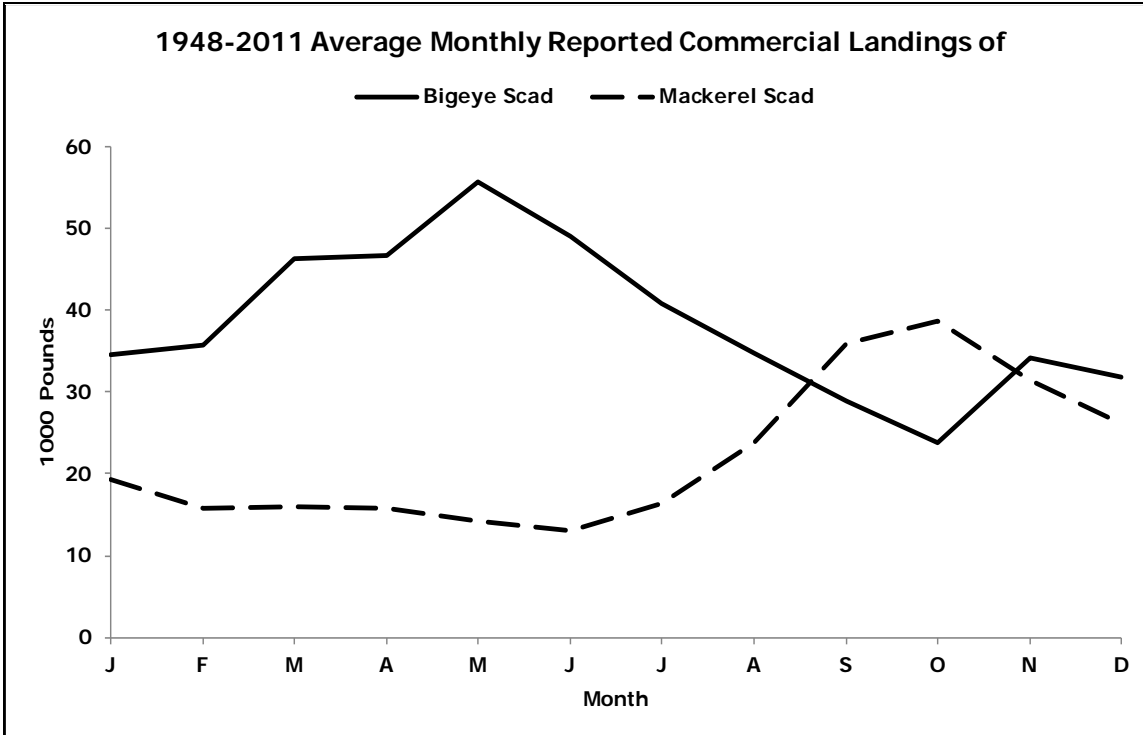


Figure D-2-7

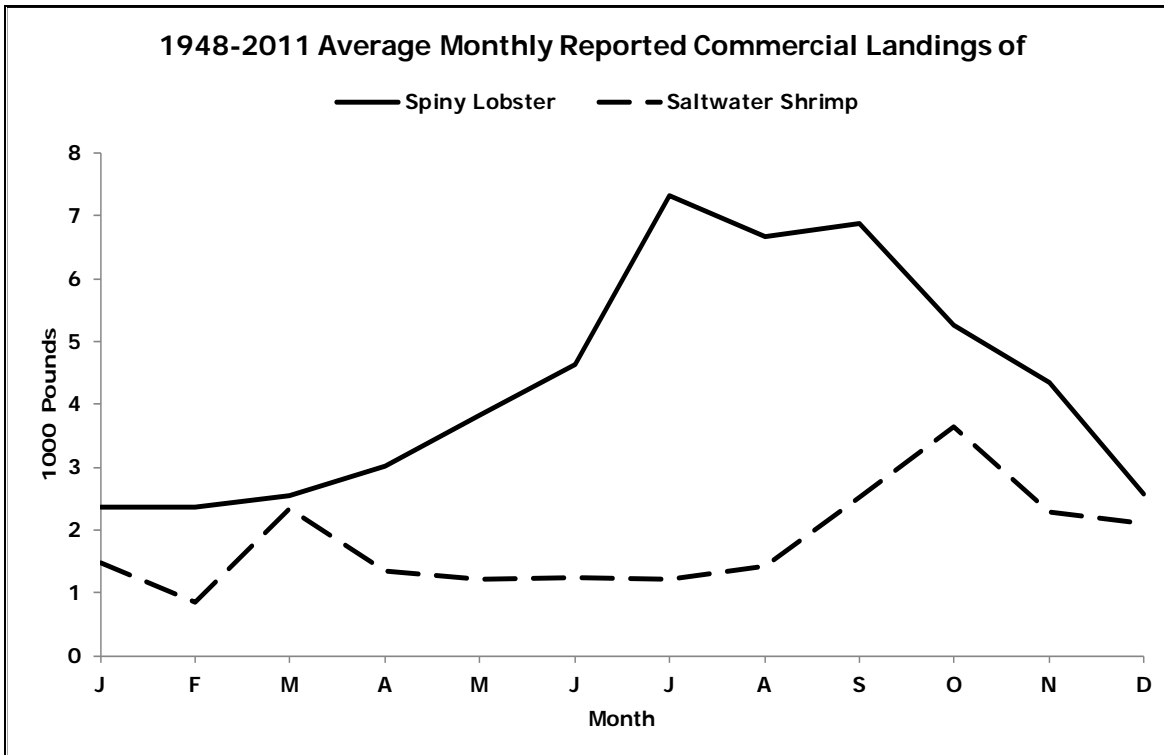


Figure D-2-8

The following graphs plot annual summary statistics to illustrate the variability among years:

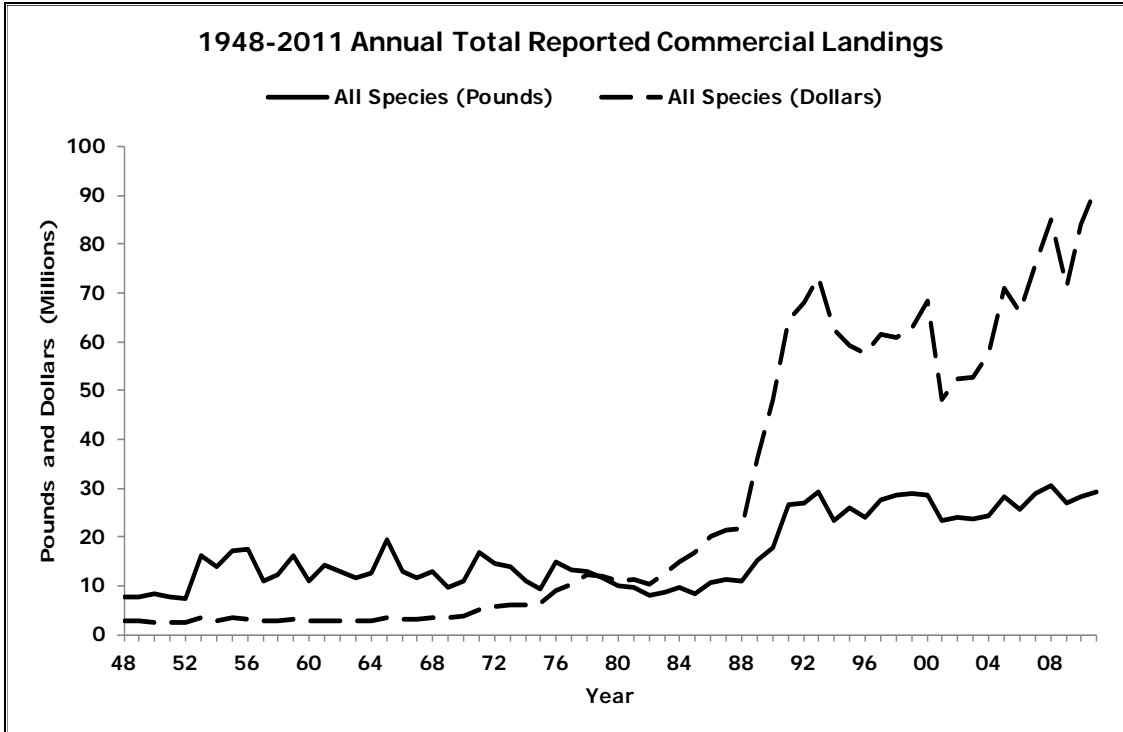


Figure D-3-1

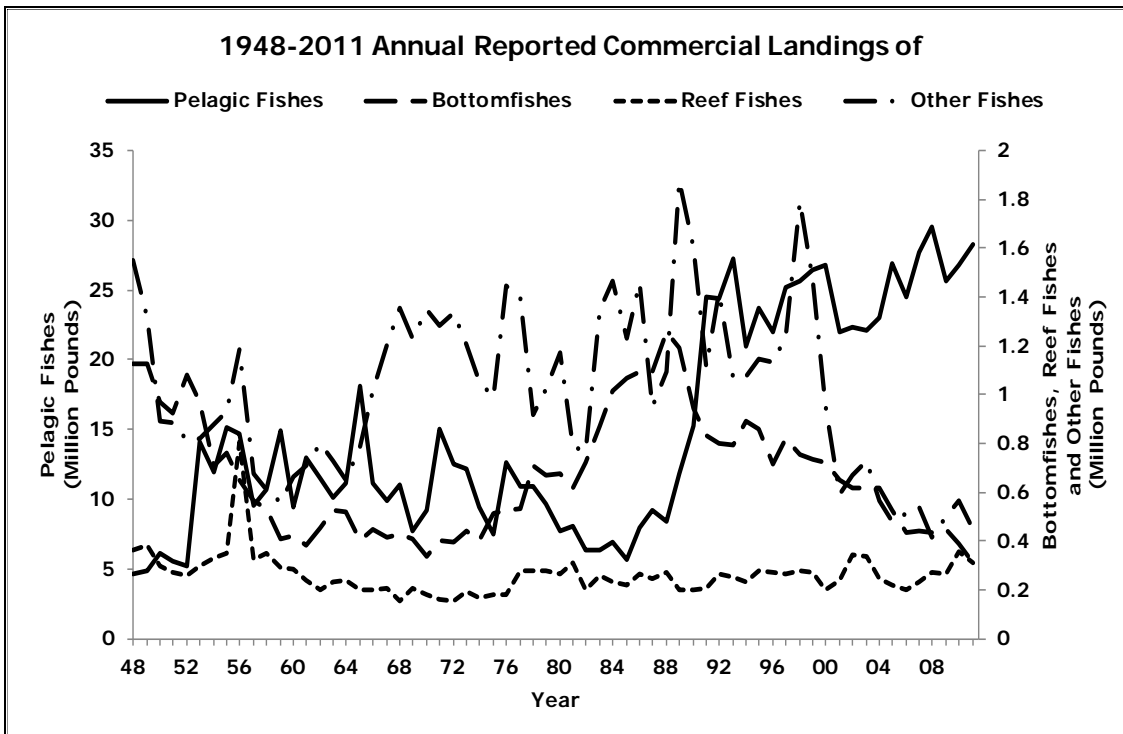


Figure D-3-2

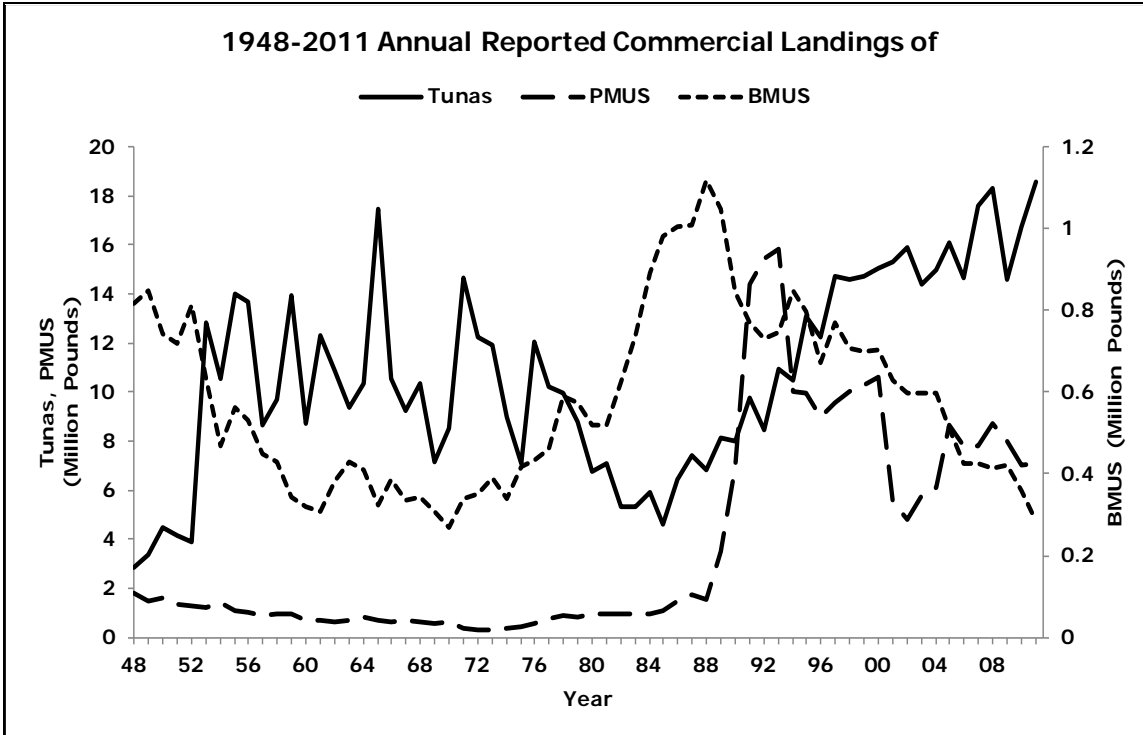


Figure D-3-3

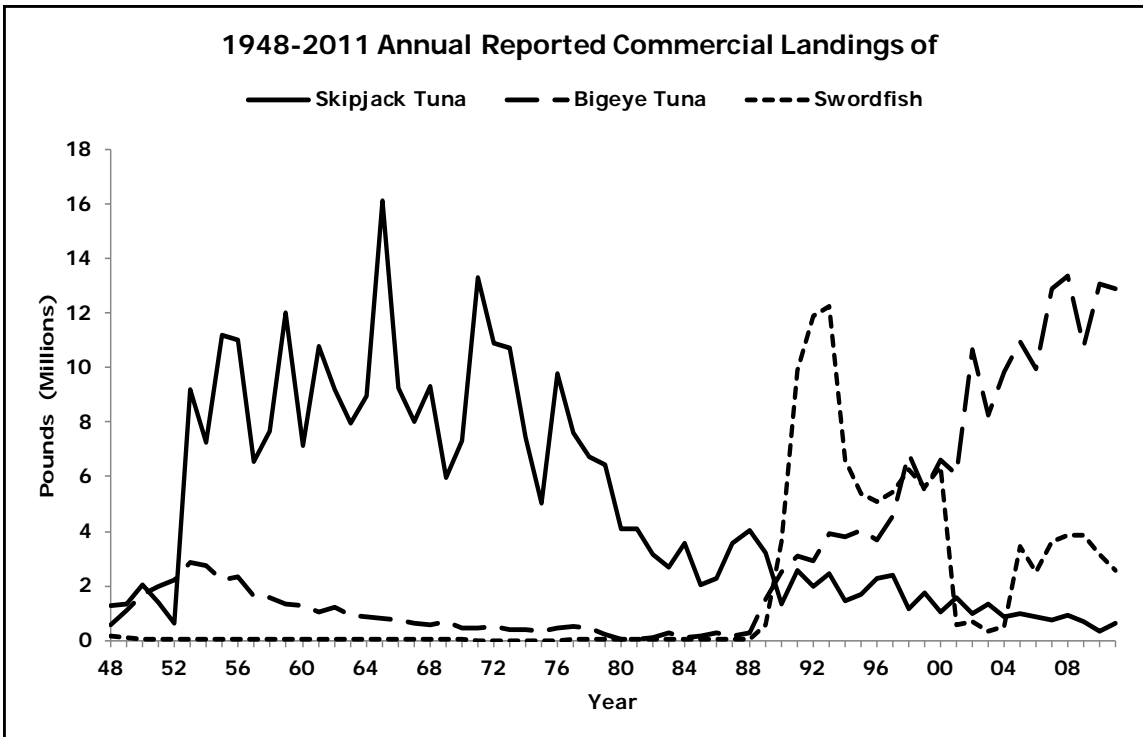


Figure D-3-4

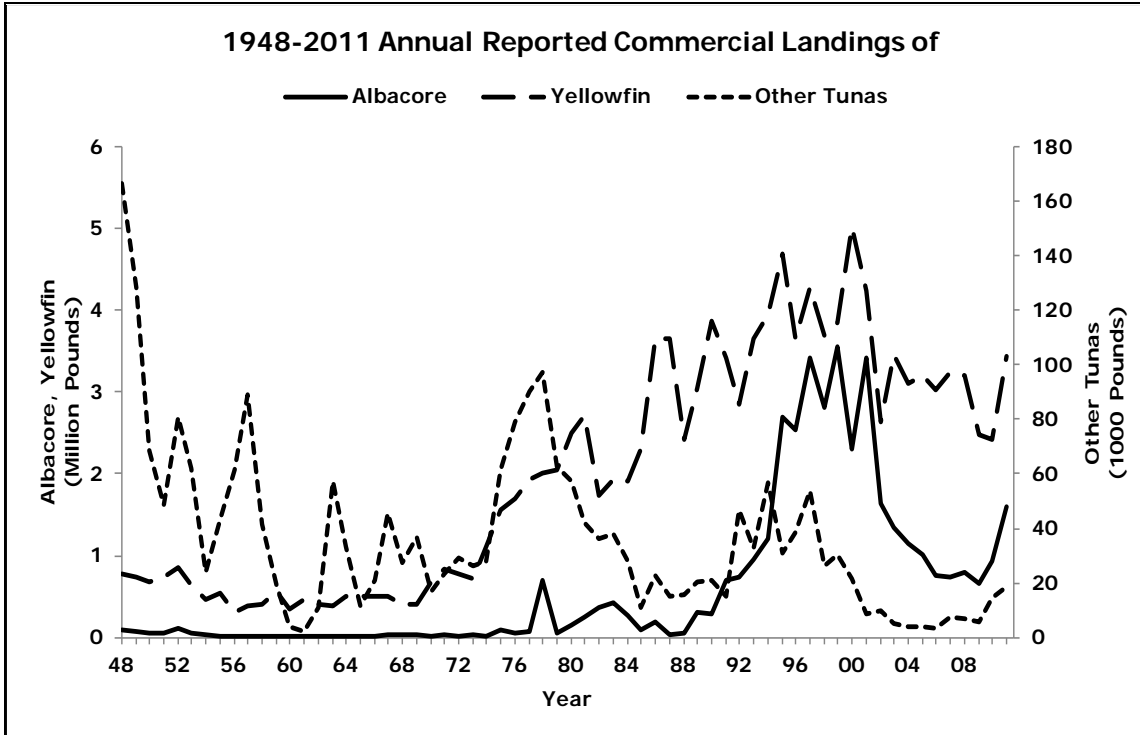


Figure D-3-5

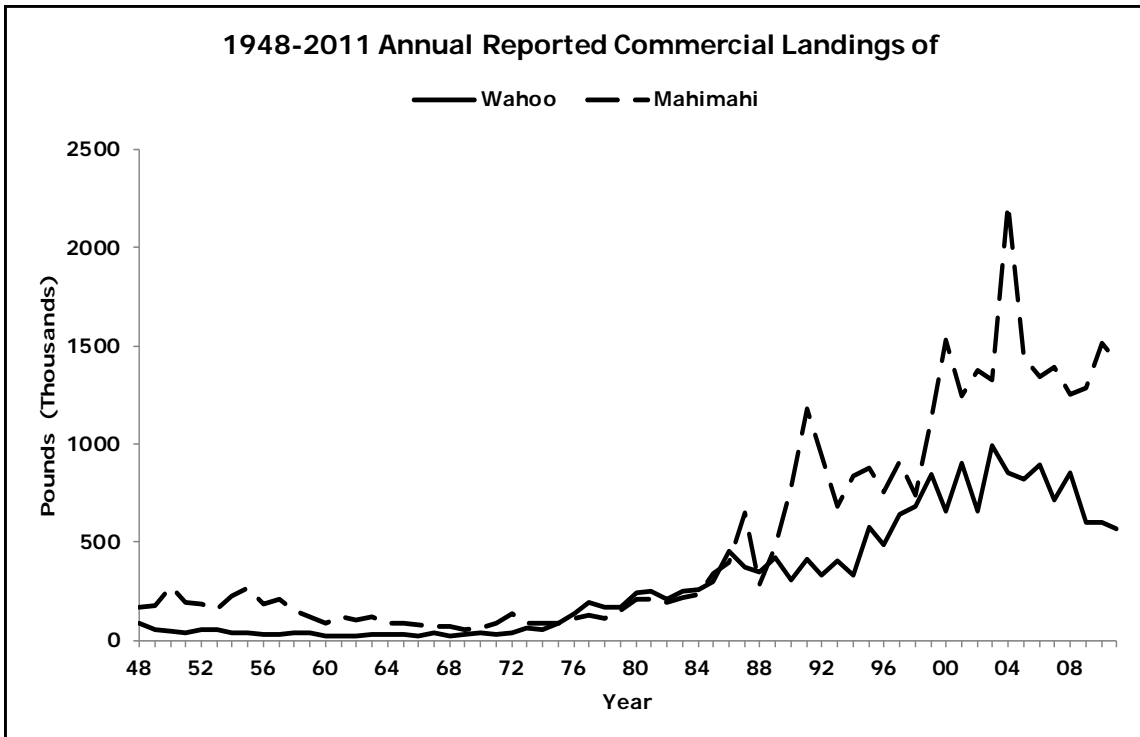


Figure D-3-6

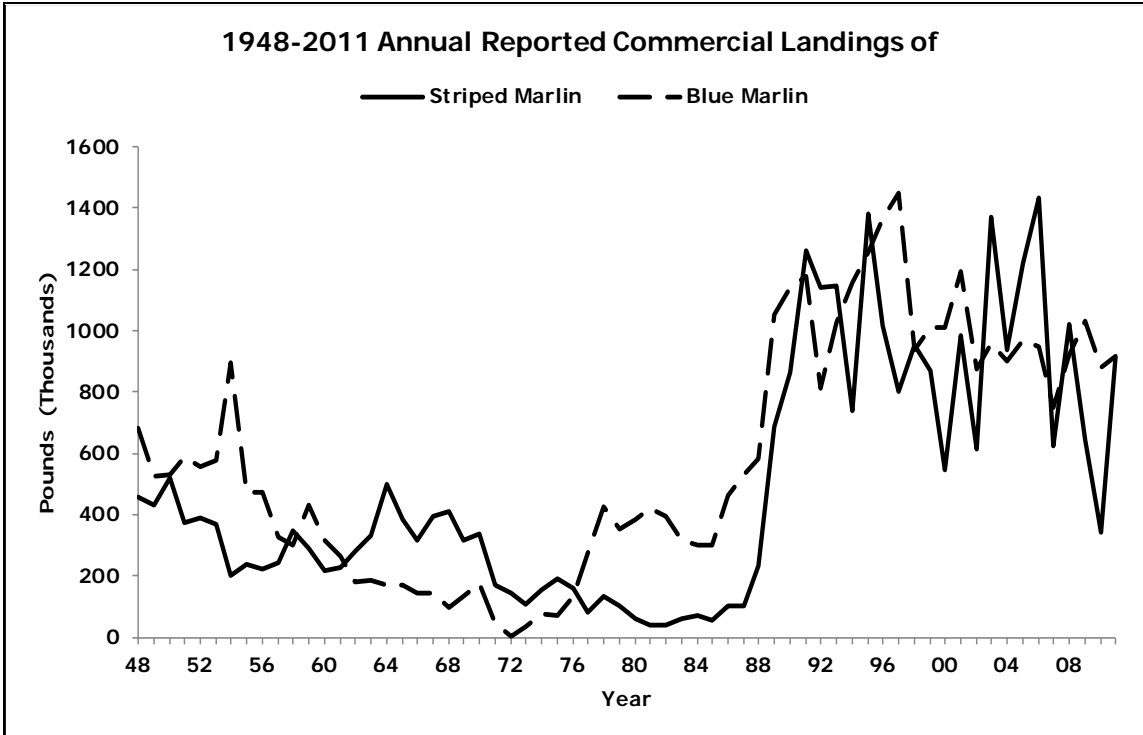


Figure D-3-7

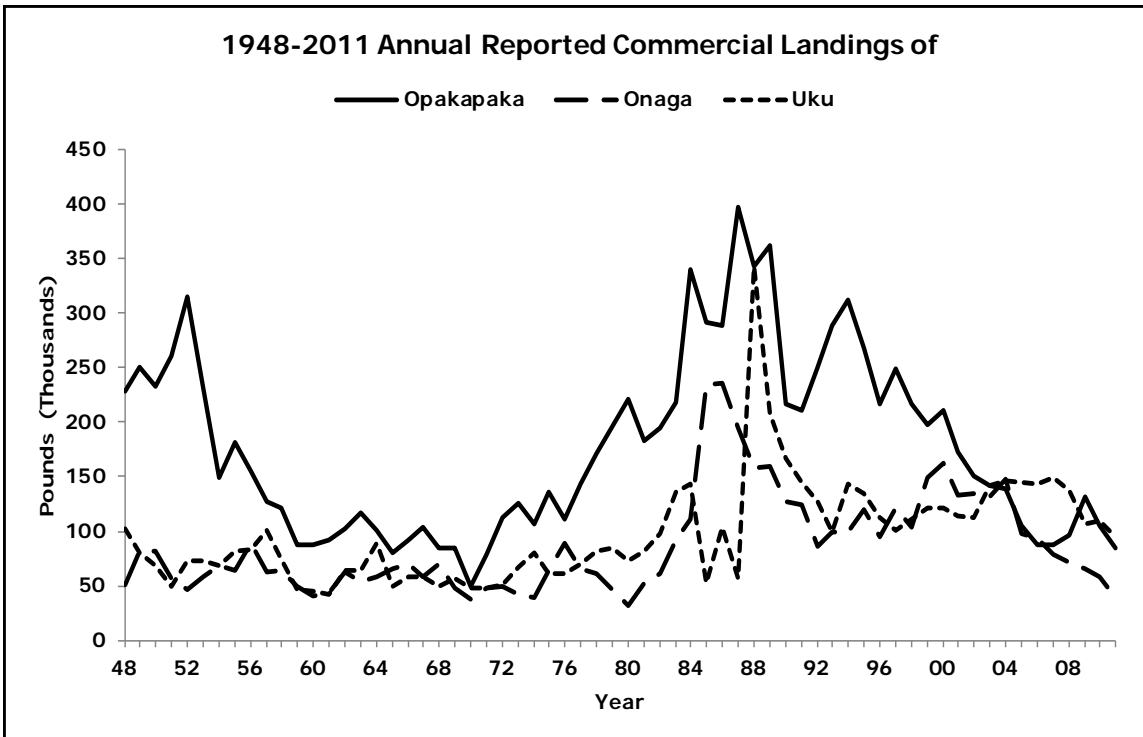


Figure D-3-8

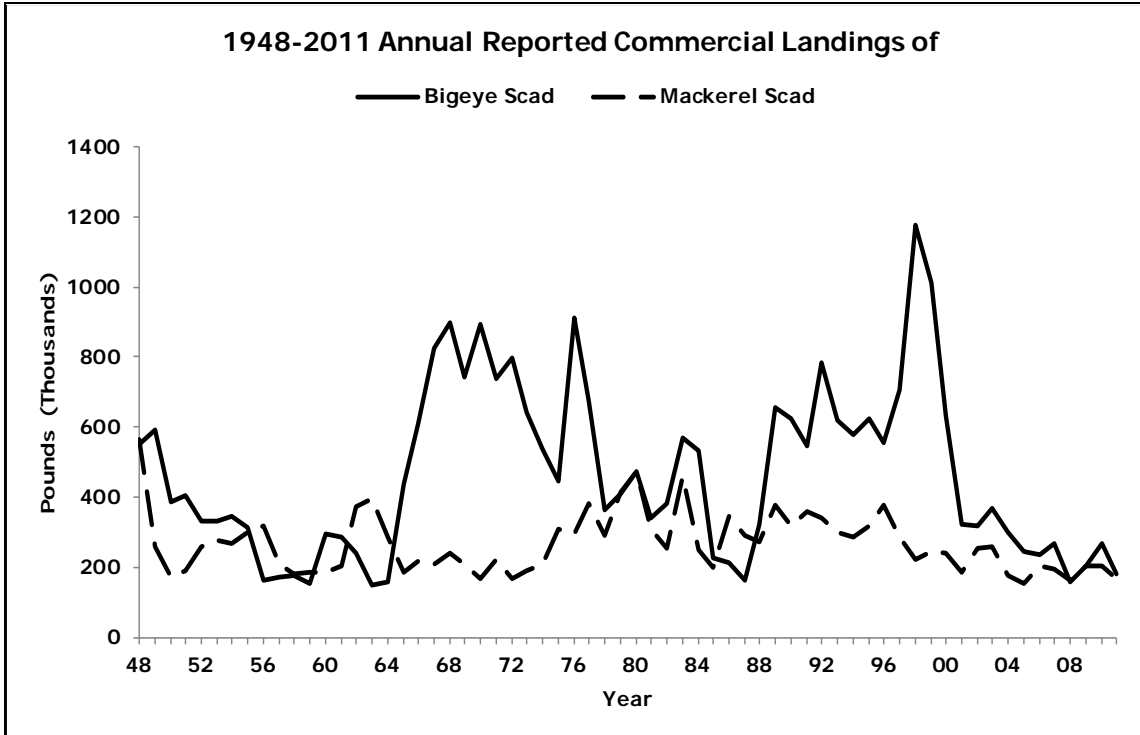


Figure D-3-9

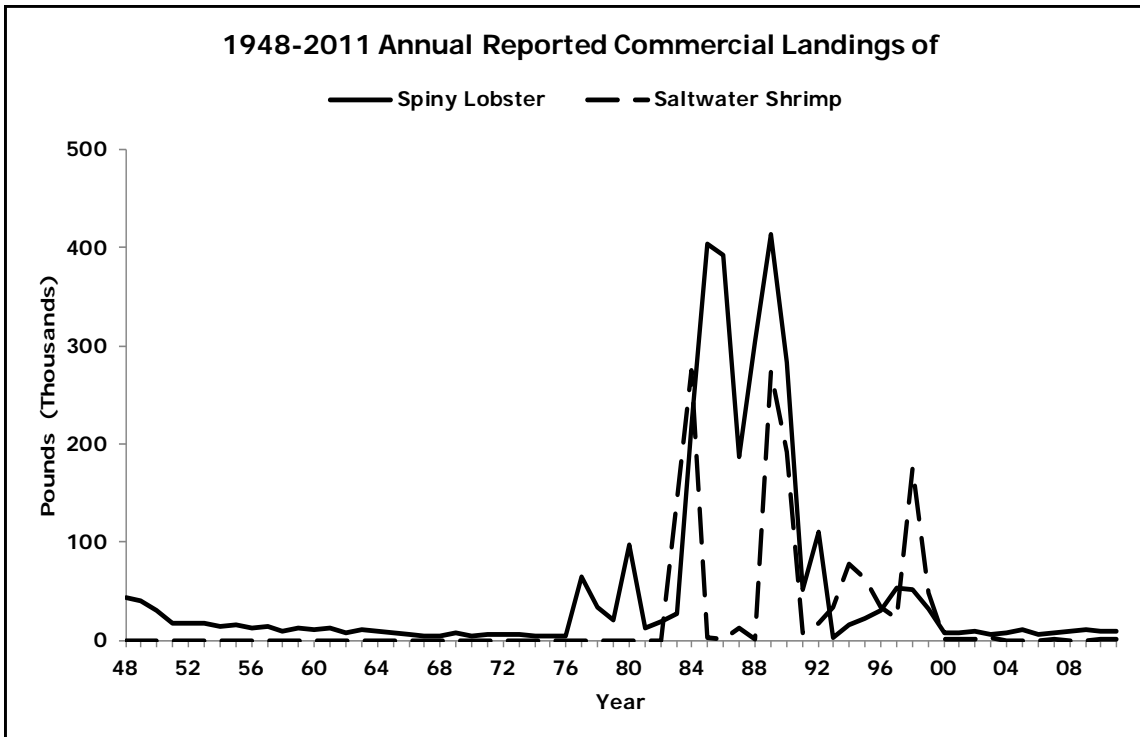


Figure D-3-10

The following graphs plot monthly landings of some commercially important species and document monthly fluctuations over the time series:

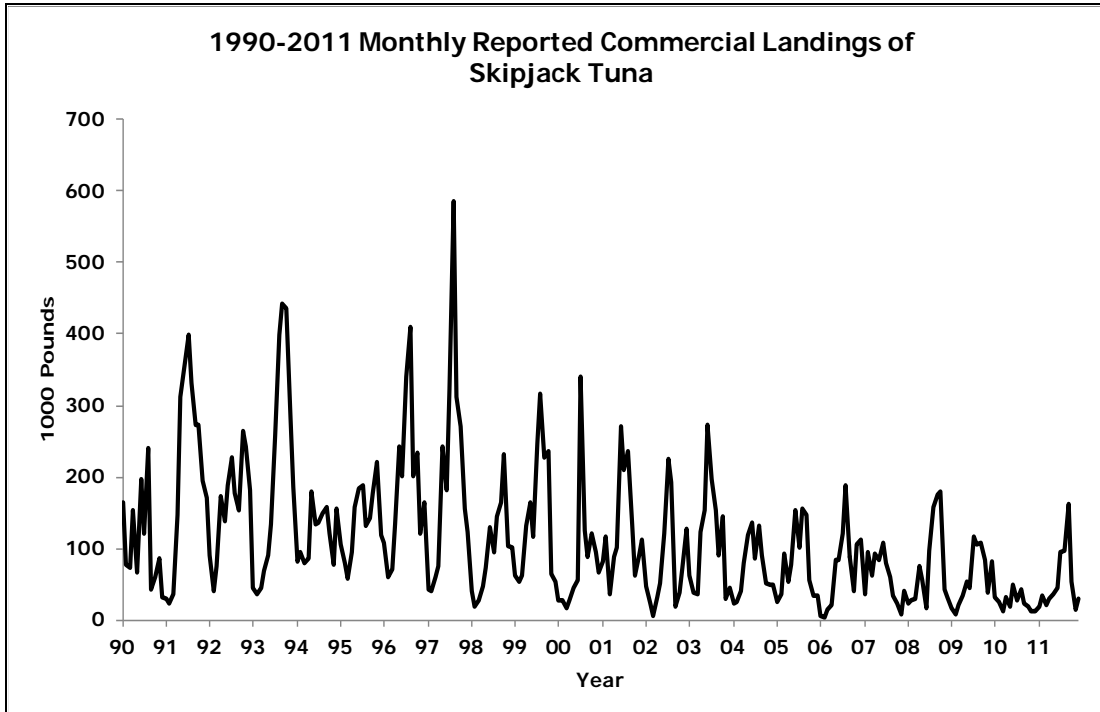


Figure D-4-1

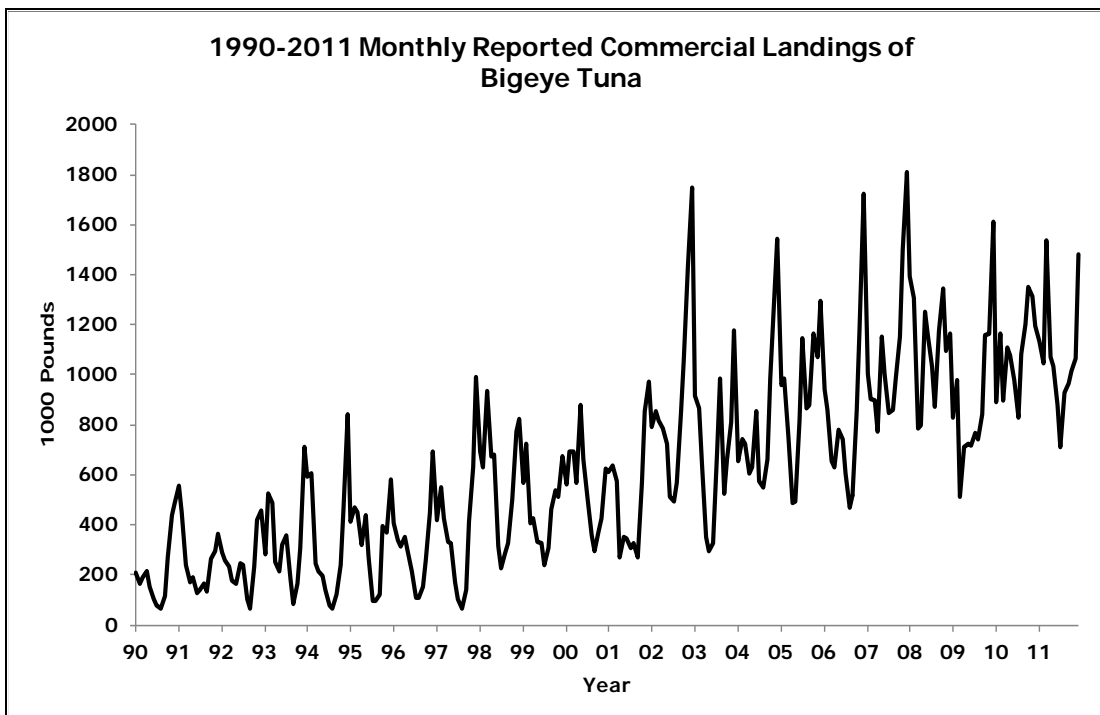


Figure D-4-2

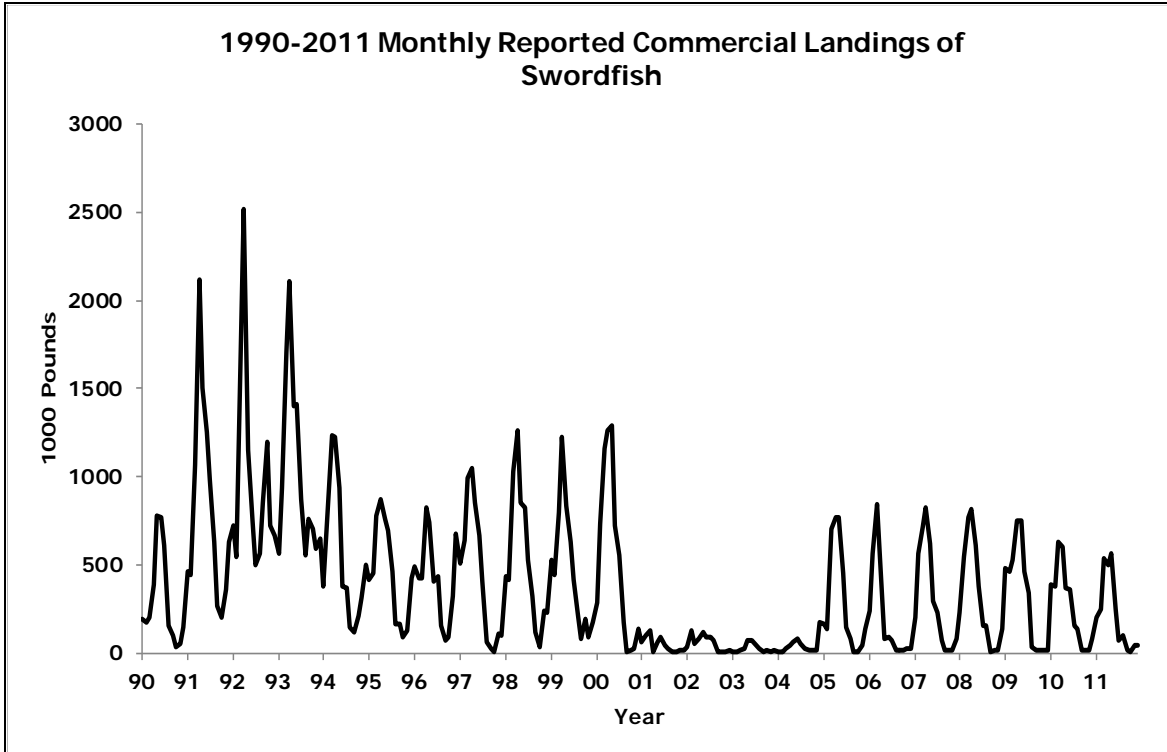


Figure D-4-3

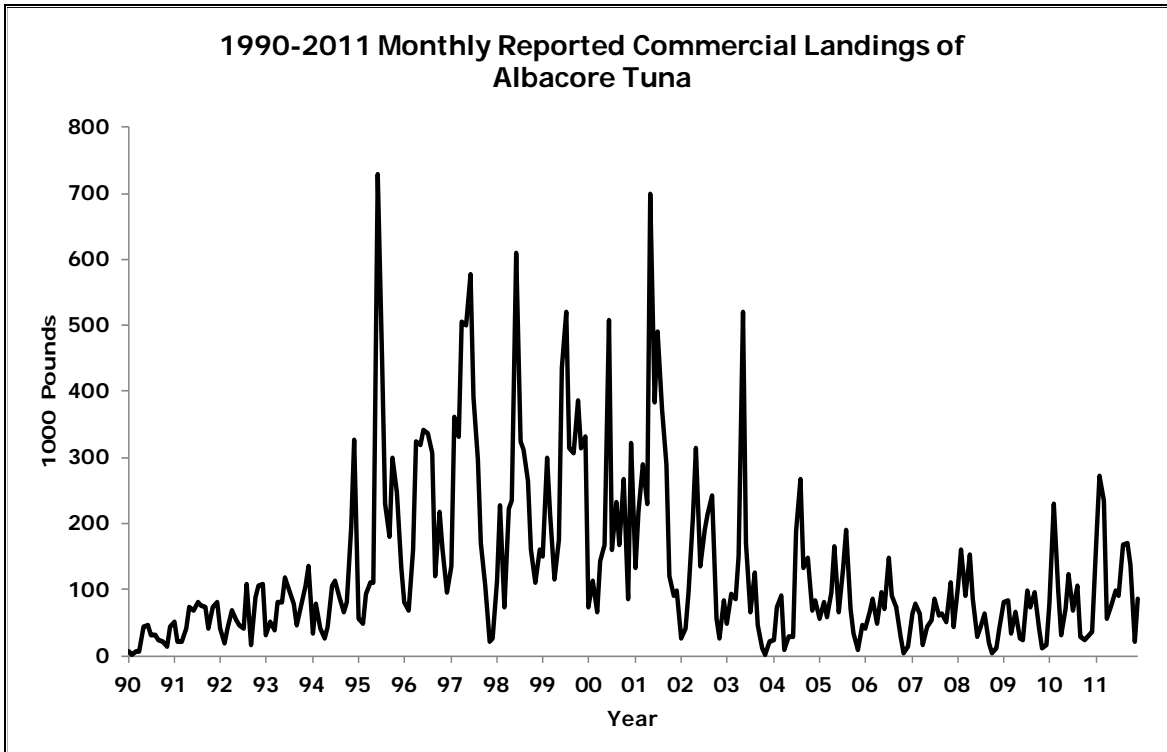


Figure D-4-4

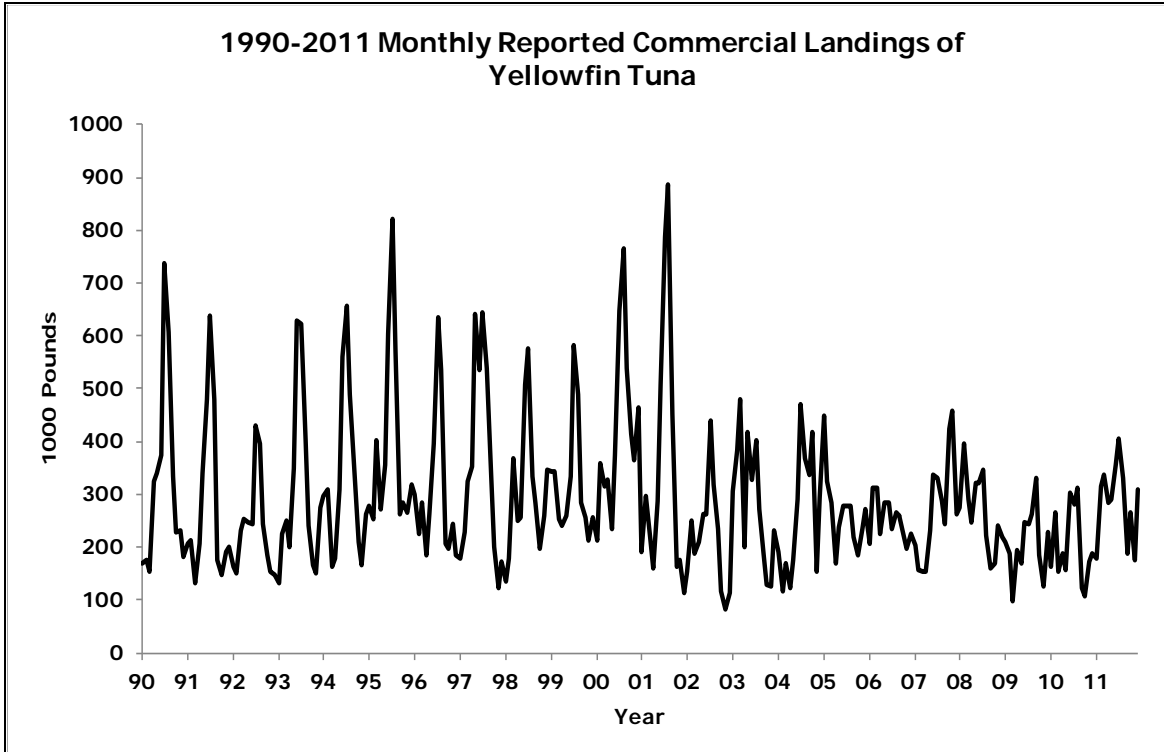


Figure D-4-5

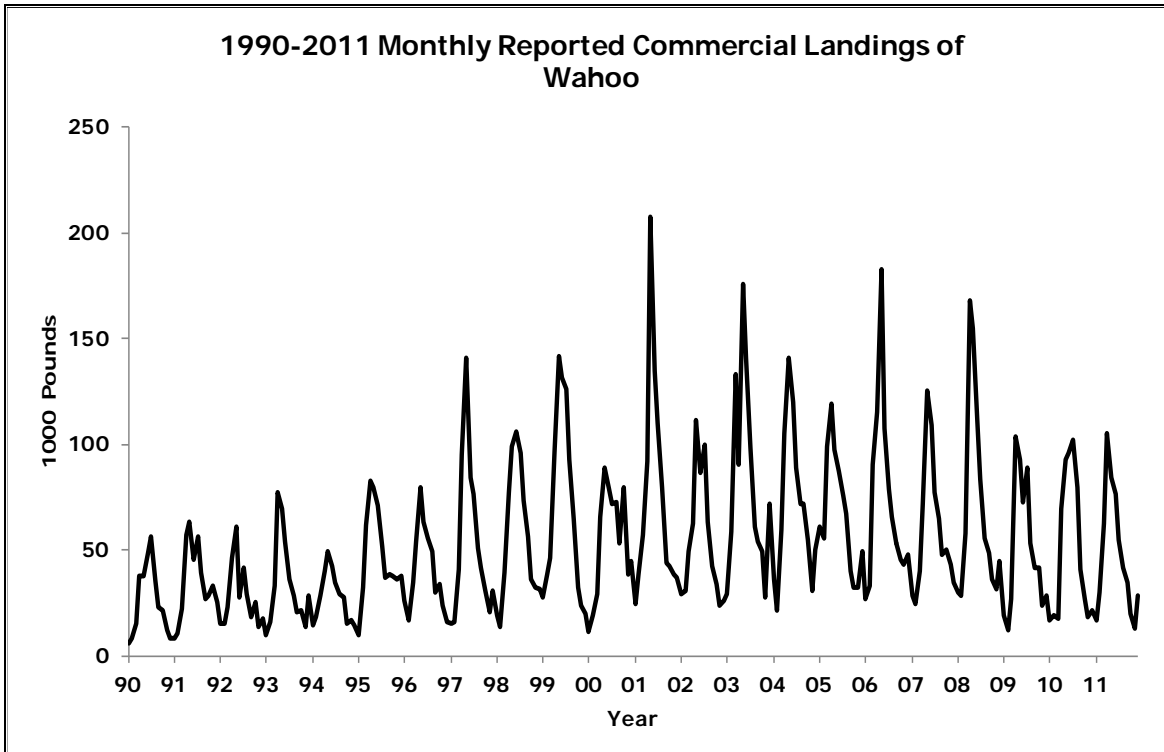


Figure D-4-6

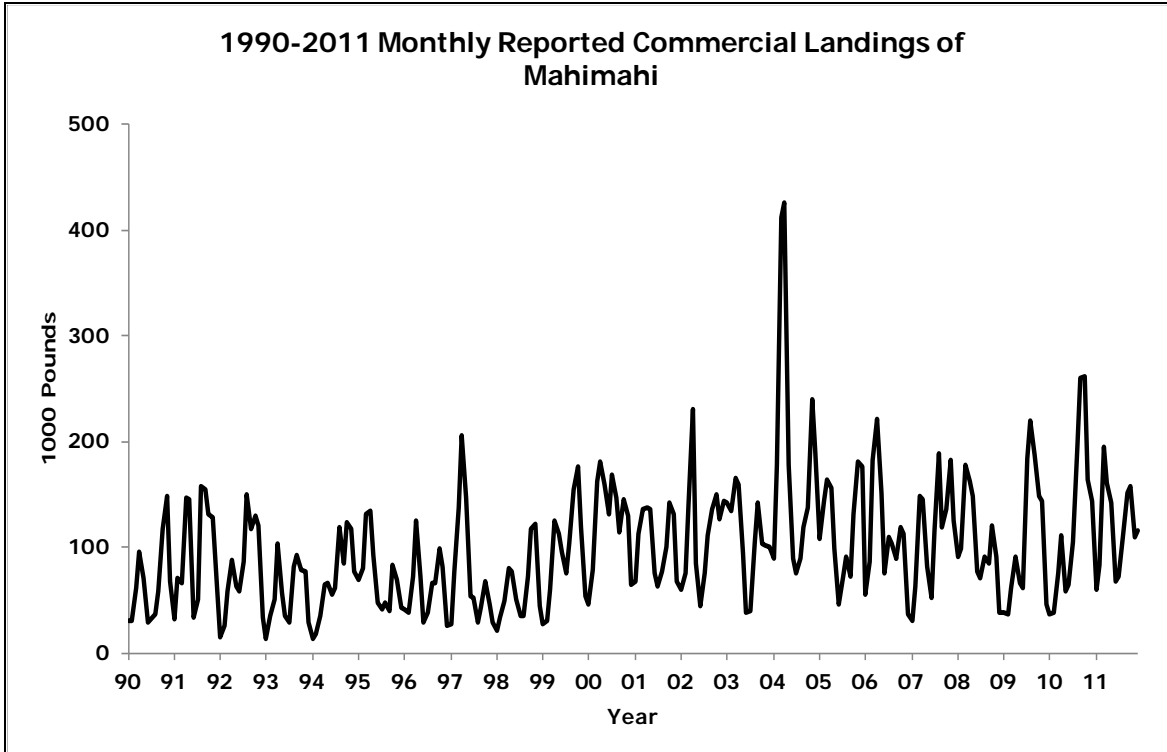


Figure D-4-7

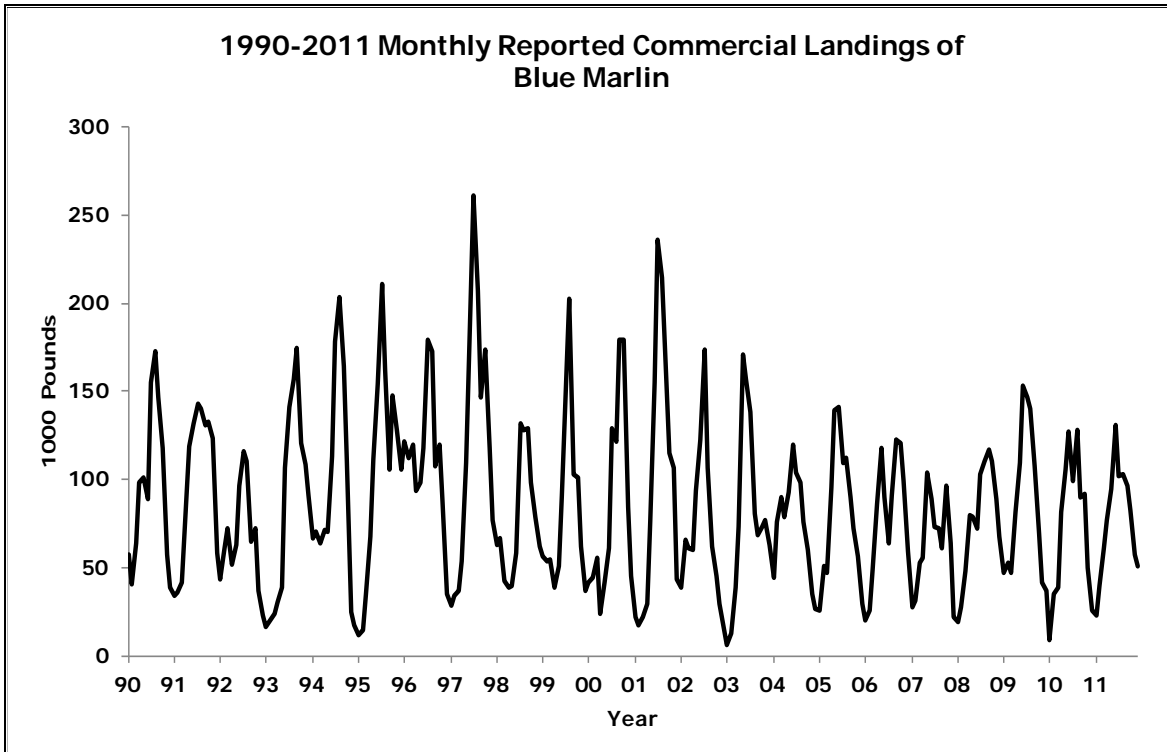


Figure D-4-8

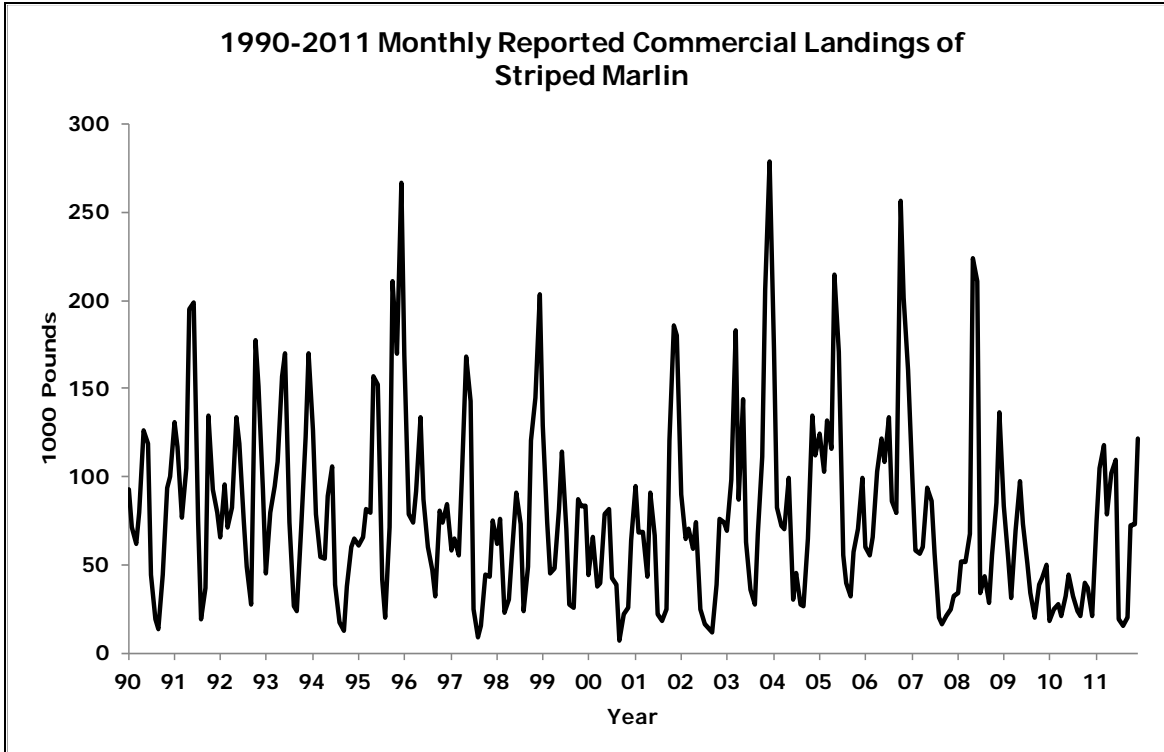


Figure D-4-9

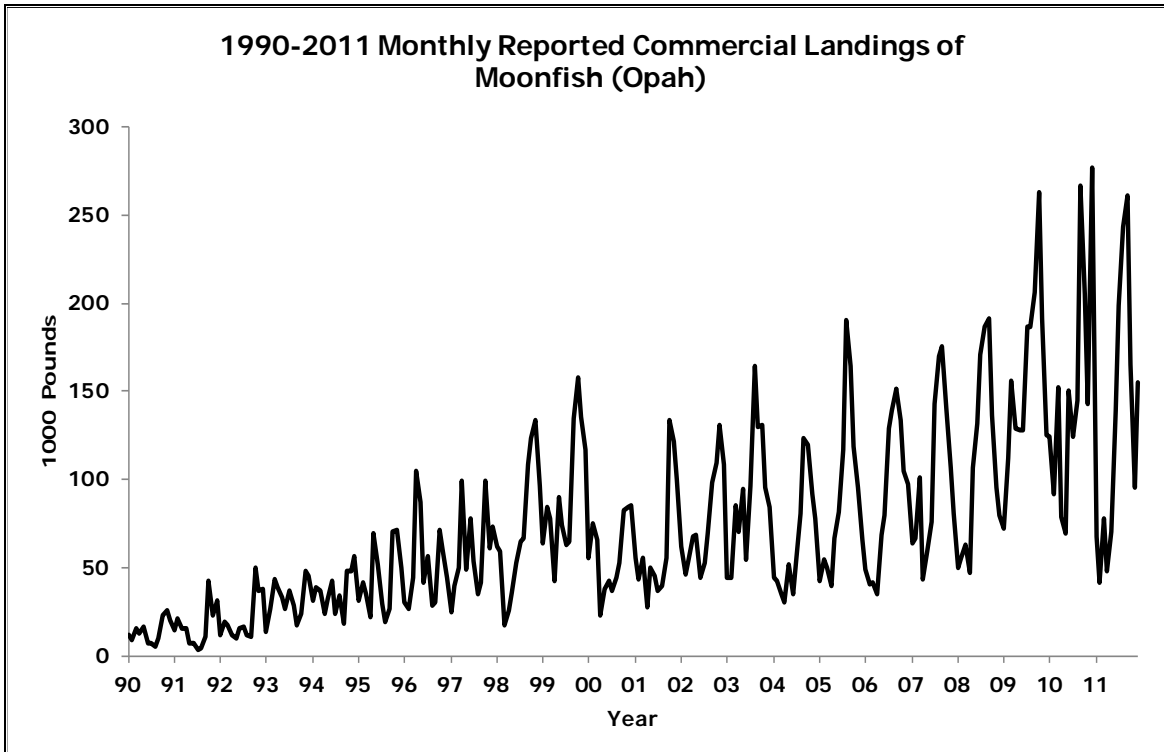


Figure D-4-10

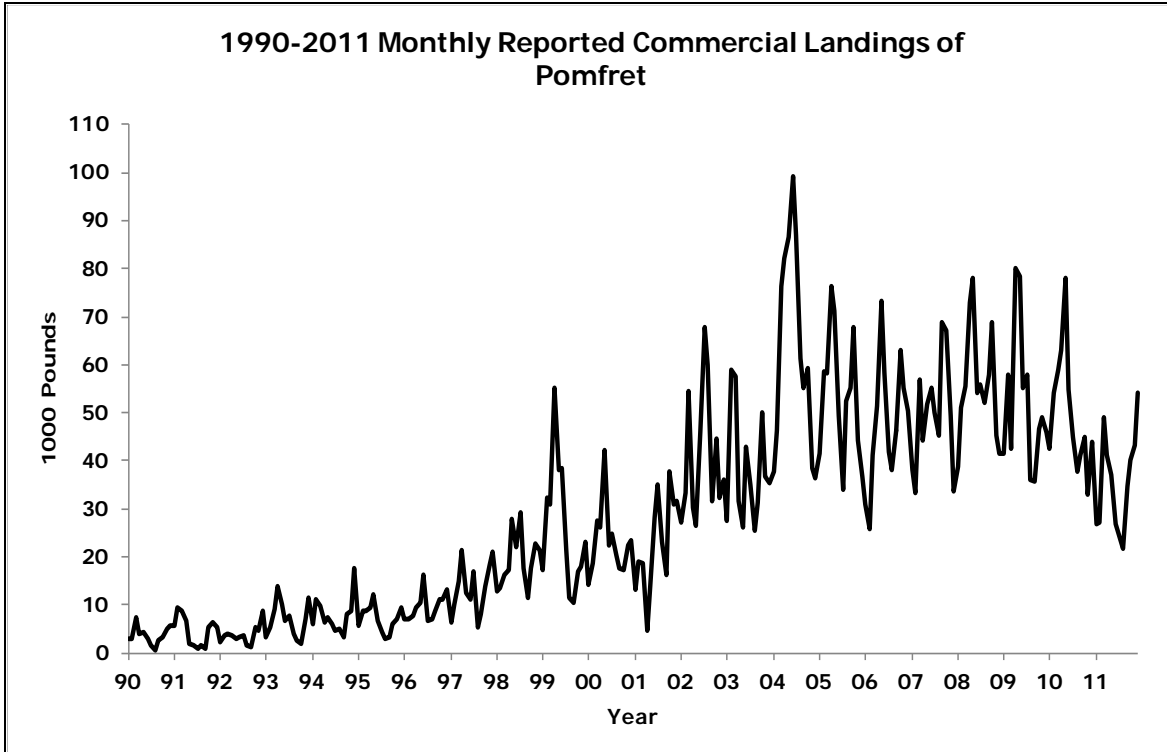


Figure D-4-11

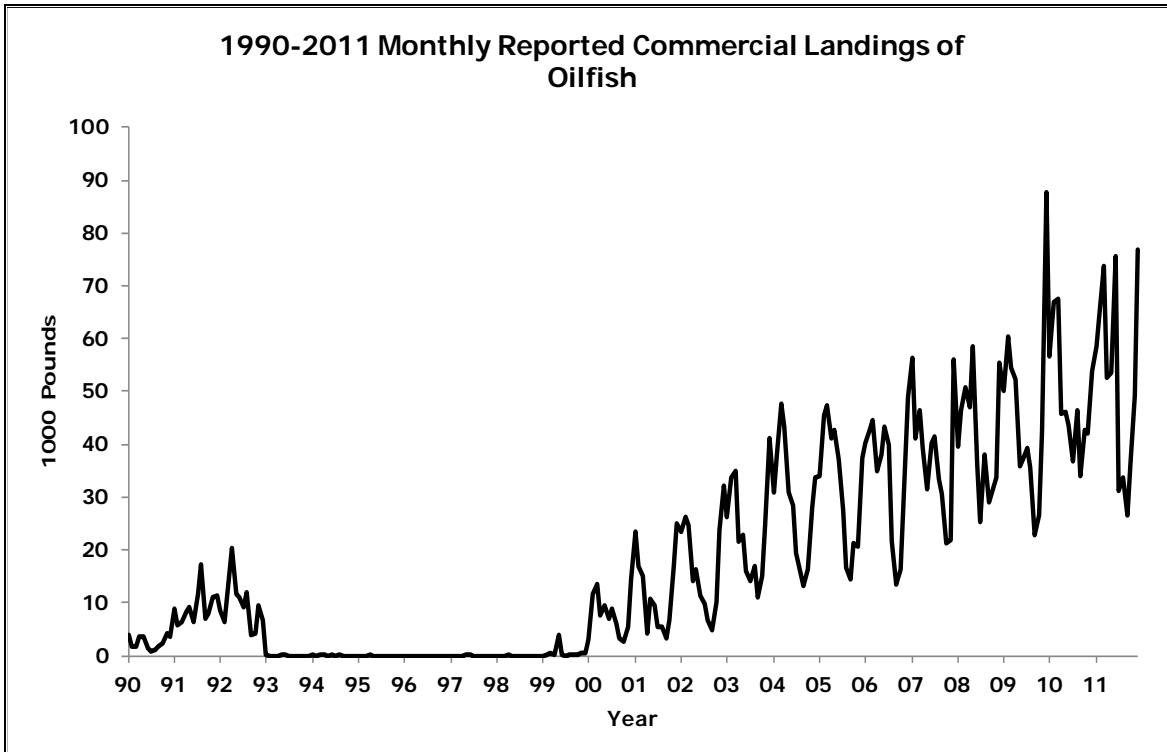


Figure D-4-12

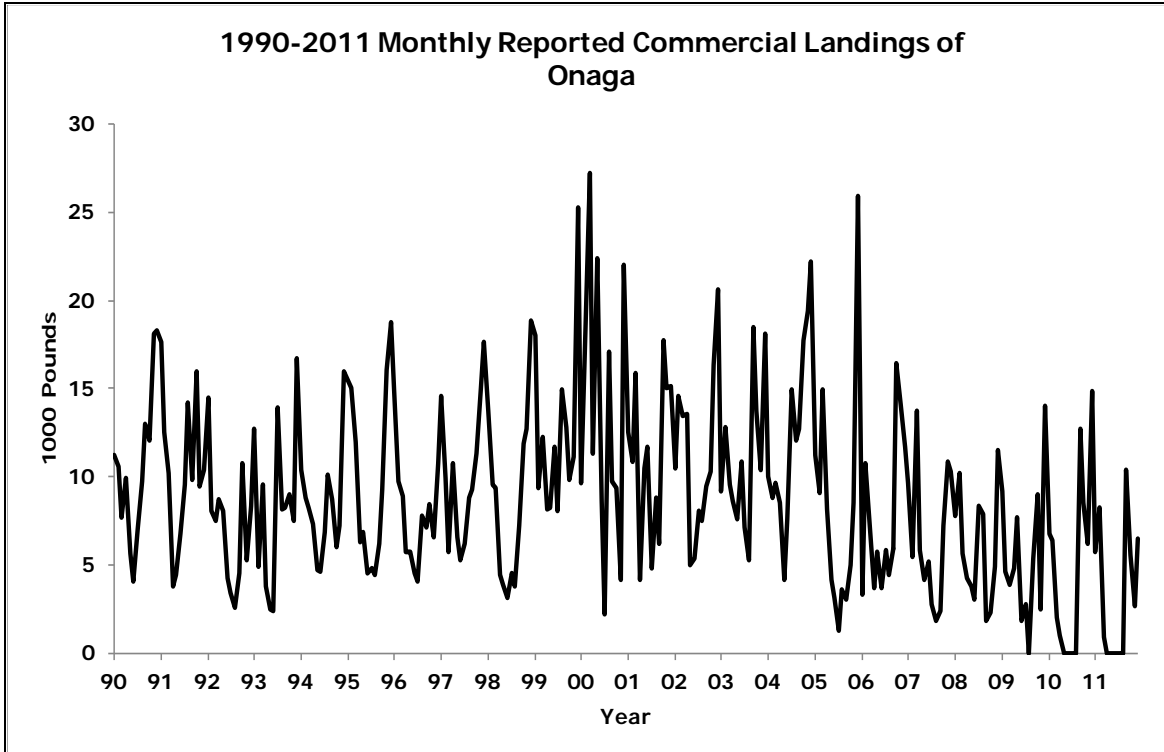


Figure D-4-13

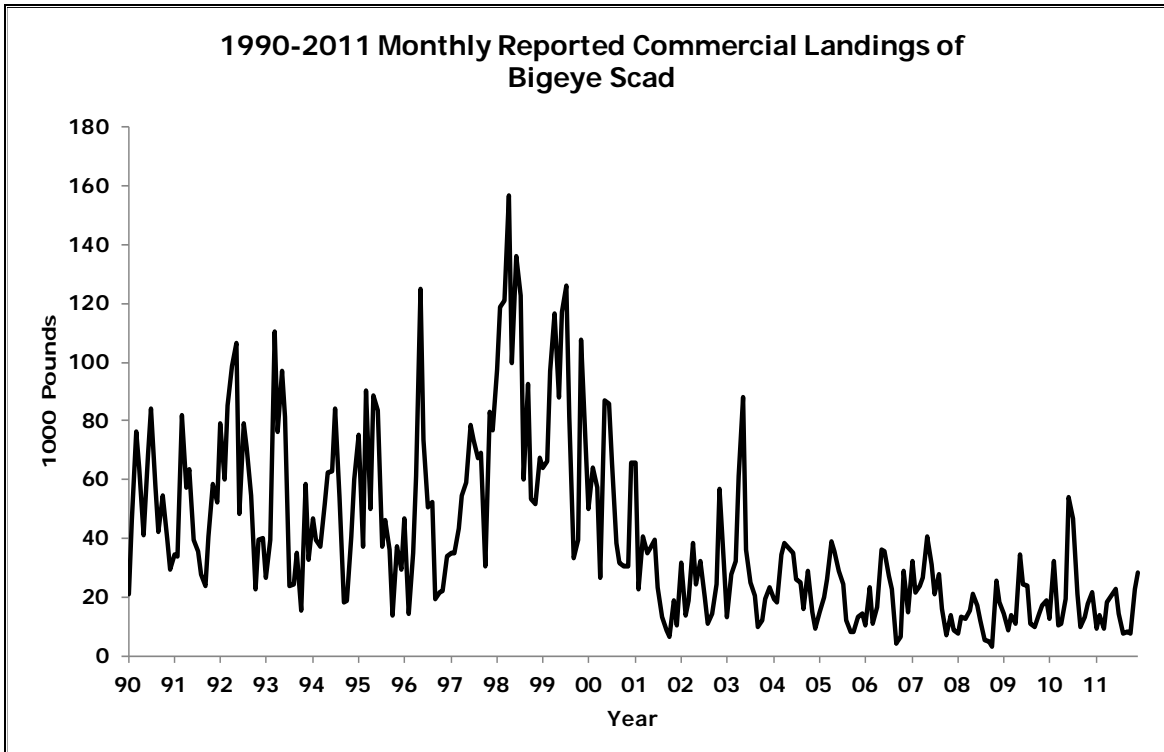


Figure D-4-14